

### MATERIAL SPECIFICATIONS

#### RECOMMENDED

BASE METAL - CDA-210, GILDING, EXTRA SPRING TEMPER  
 PLATING - 0.0050 × 0.0025MM THICK TIN

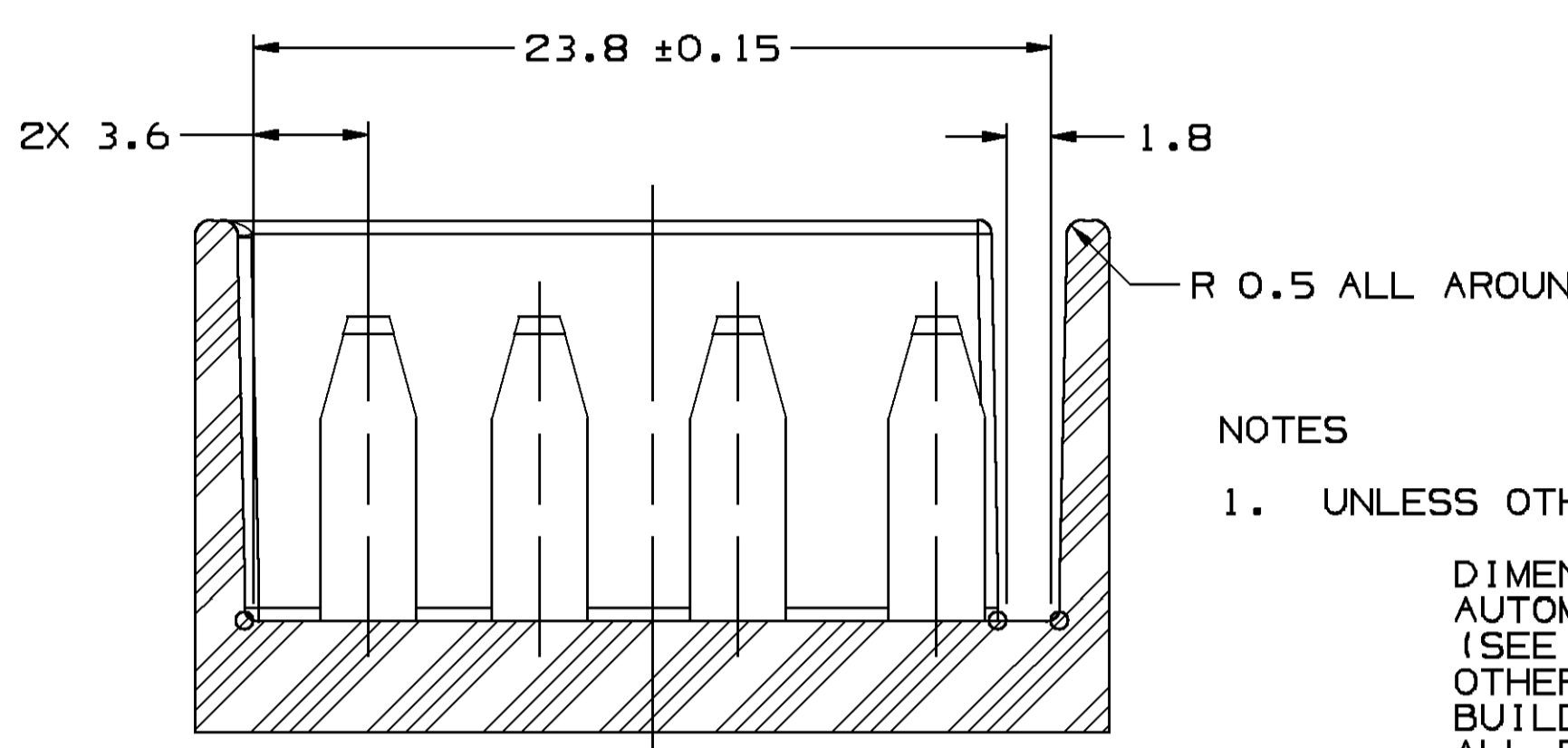
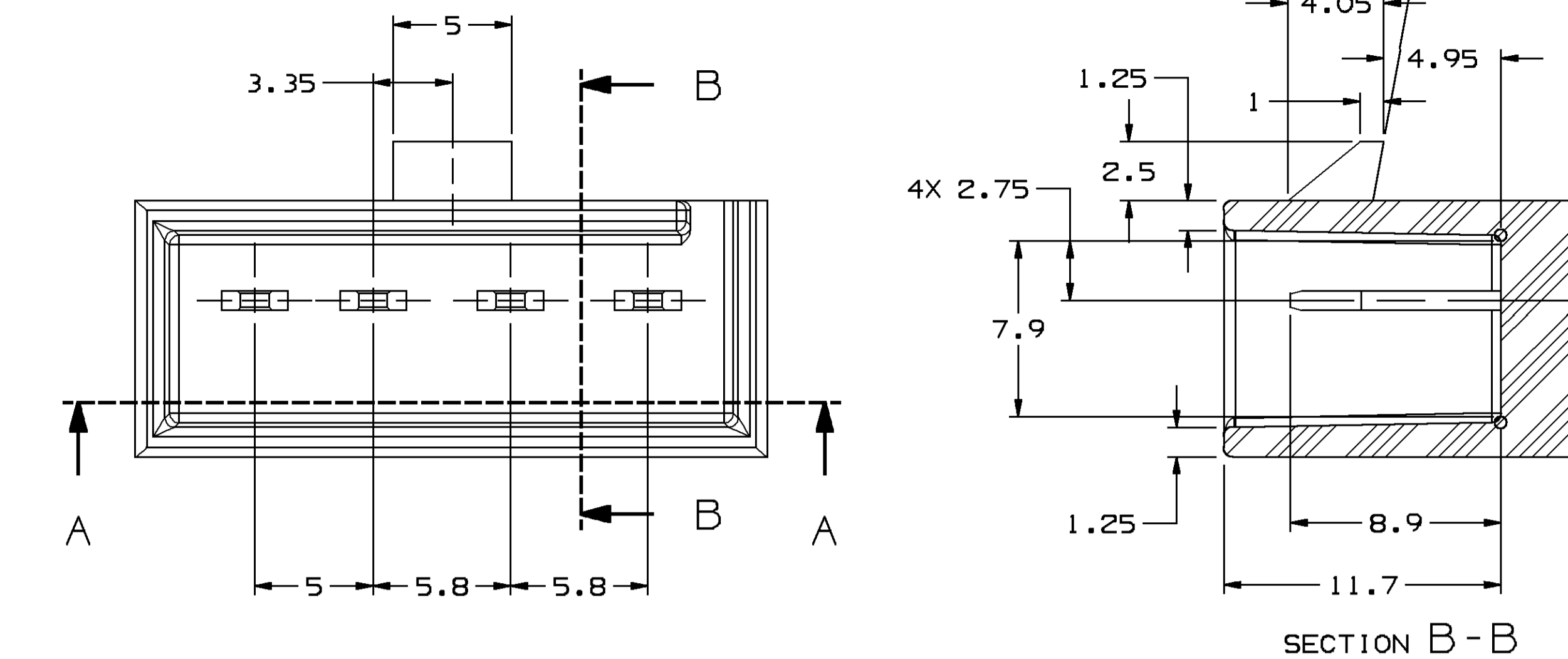
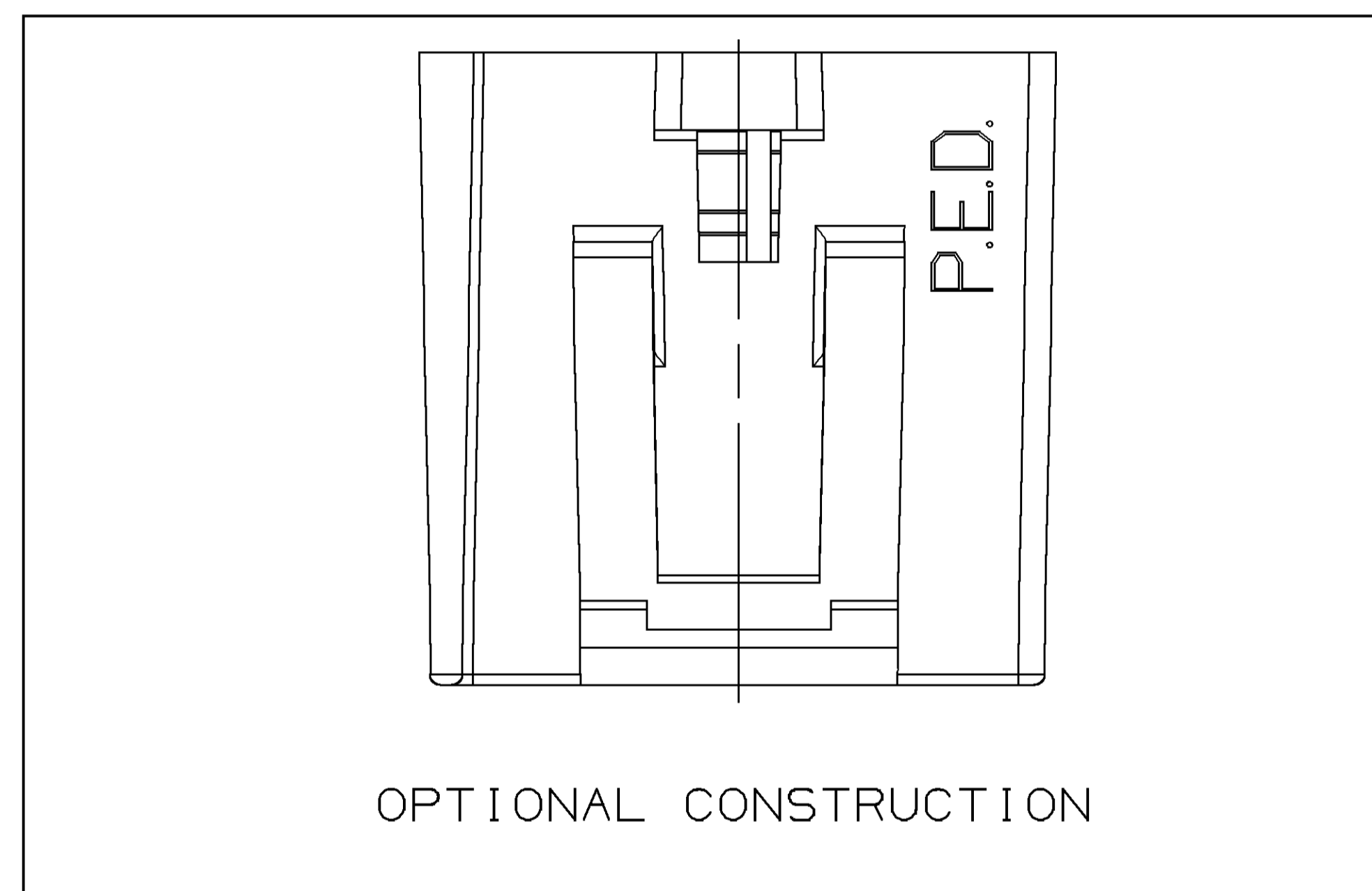
#### MINIMUMS

ELECTRICAL CONDUCTIVITY - >20% IACS AT 20° C. USE OF A MATERIAL WITH CONDUCTIVITY <20% IACS MUST BE APPROVED BY PACKARD ELECTRIC MATERIALS ENGINEERING.

TENSILE STRENGTH - 407 MPa  
 PLATING - FOR LOW ENERGY (< 5V) AND NON-PASSENGER COMPARTMENT POWER CIRCUITS, 0.0050 × 0.0025MM THICK TIN. FOR MATERIALS CONTAINING 10% OR MORE ZINC, AN UNDERPLATE OF COPPER 0.0050 × 0.0025MM THICK IS REQUIRED.

### MATING BLADE INFORMATION

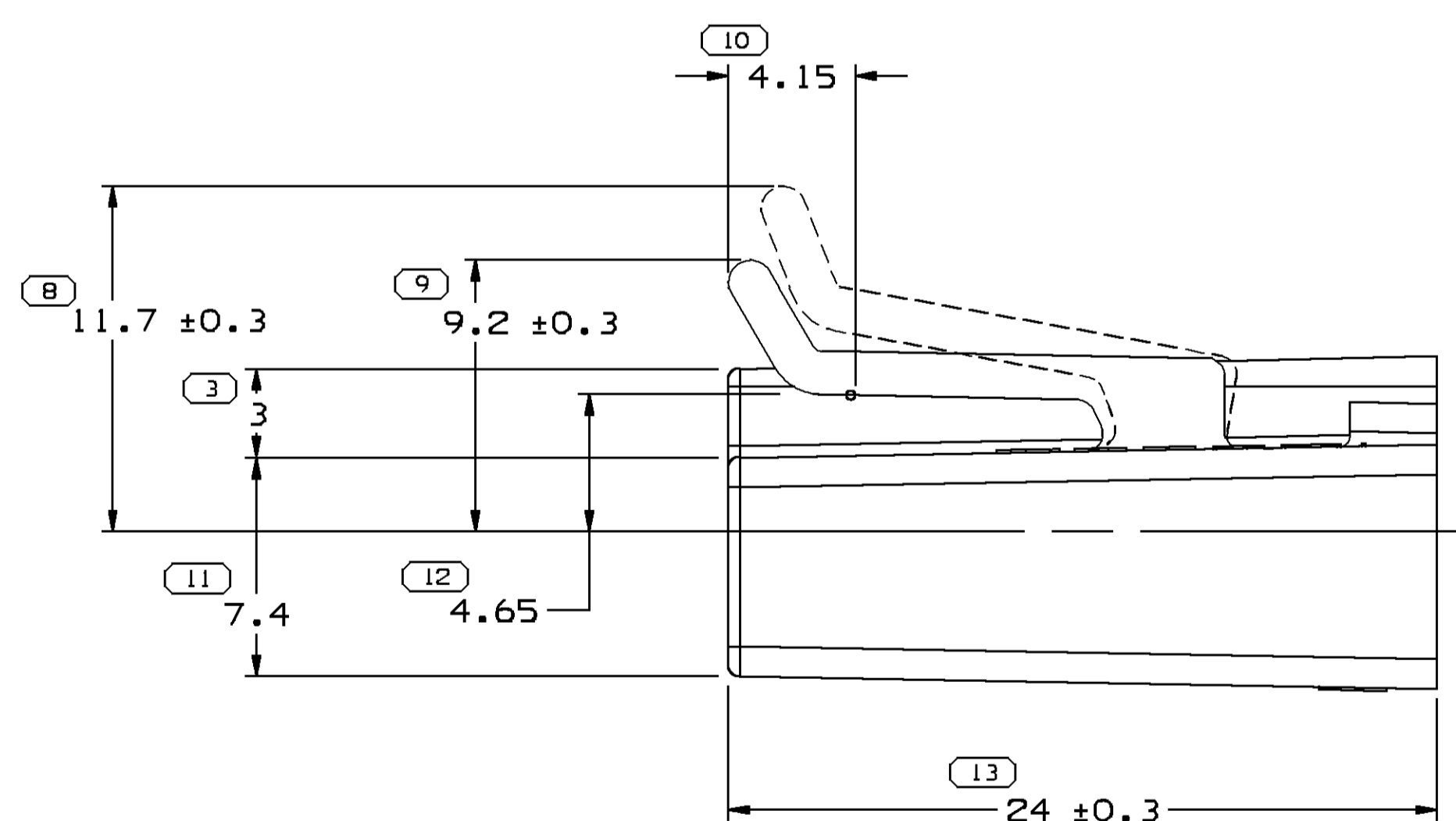
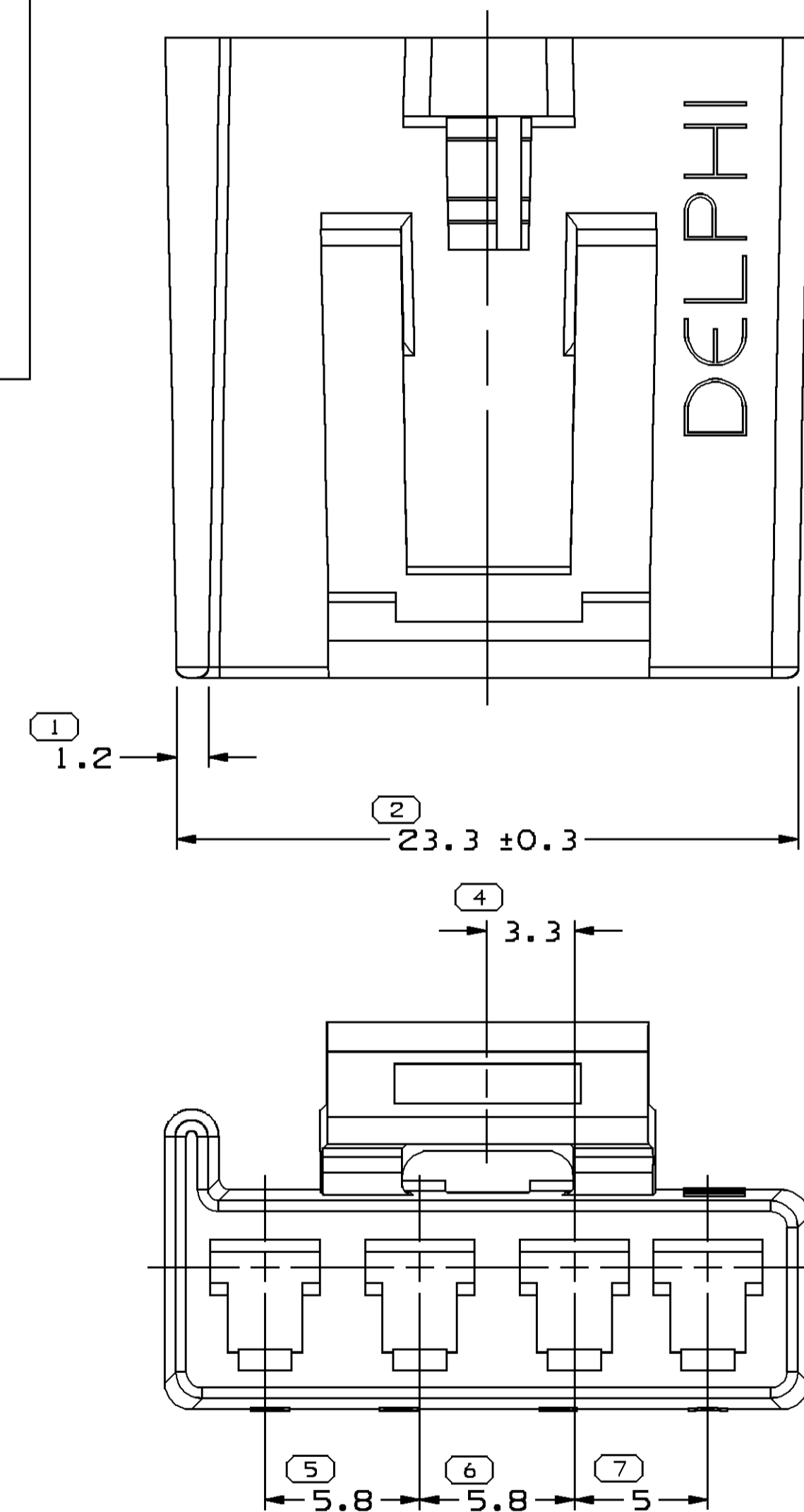
SCALE 10:1



#### NOTES

- UNLESS OTHERWISE SPECIFIED AND/OR INDICATED:  
 DIMENSIONS ARE TO FACE OF VIEW SHOWN AND AUTOMATICALLY ROUNDED BY COMPUTER FOR INSPECTION (SEE MATH MODEL FOR PRECISE DIMENSIONS). FOR ALL OTHER DIMENSIONS NOT SHOWN BUT REQUIRED FOR TOOL BUILD, SEE MATH MODEL FOR PRECISE TOOL PATH DATA. ALL RADII 0.4  
 DRAFT IS 1° ON ALL OUTSIDE SURFACES

### MATING SWITCH DETAIL



#### NOTES

- UNLESS OTHERWISE SPECIFIED AND/OR INDICATED:  
 DIMENSIONS ARE TO FACE OF VIEW SHOWN AND AUTOMATICALLY ROUNDED BY COMPUTER FOR INSPECTION (SEE MATH MODEL FOR PRECISE DIMENSIONS). FOR ALL OTHER DIMENSIONS NOT SHOWN BUT REQUIRED FOR TOOL BUILD, SEE MATH MODEL FOR PRECISE TOOL PATH DATA. LIKE CAVITIES ARE IDENTICAL. LOCKING FEATURES ARE IDENTICAL
- FOR APPLICATION DATA SEE THE APPLICATION DRAWING.
- THIS PRODUCT IS NOT CATEGORIZED AS AN APPEARANCE ITEM. MINOR IMPERFECTIONS INCLUDING, BUT NOT LIMITED TO, FLOW MARKS, COLOR BLEMISHES, GATE VESTIGE, AND SOFT FLASH THAT DO NOT AFFECT THE FIT, FORM, OR FUNCTION OF THE PART ARE PERMISSIBLE PER DPNP-4.7-CS-01.

SYMBOL DEFINITION		MISSING NUMBERS		DWG STATUS		ZONE		REVISION HISTORY		AUTH	DR	APVD	APV2
A DIMENSION WITHOUT AN INSPECTION REPORT SYMBOL ( ) DOES NOT REQUIRE INSPECTION. IT MAY BE CONTROLLED ON AN INDIVIDUAL COMPONENT DRAWING	TOTAL NO. OF SYMBOLS ON DRAWING	13		DATE	STG	REV	IV/P	CHG					
				24JAN01	R	C3	-	-	DELPHI STAMP WAS ADDED & PED STAMP CHANGED TO OPTIONAL CONSTRUCTION	205565	JGR	EDV	JA
				27FEB01	R	C4	-	-	REVISED GRAPHICS	206711	JGR	EDV	JA
				10SEP04	R	C4	-	-	UPDATED 280 CAVITY W/ LATEST ESD	258335	MJM	MJM	MR
				13NOV08	R	C4	AA	-	UPDATED MAT'L CALLOUT	404006	EFS	FKV	WTM

DIMENSIONAL RANGE (MM)	CHART	EST
FROM > 0	> 20	> 30
TO	30	100
	100	150
	150	200
	200	250
	250	300
	300	400

THIRD ANGLE PROJECTION	DO NOT SCALE	USE MATH DATA

DWG TYPE	PART DRAWING
STYLE	2.584
VOLUME (OMP)	D
DISTR CODE	

DRG TYPE	PART DRAWING
DR	R LAUNDRIES
APV02	F HESTON
APV03	F MLAKED
APV04	
APV05	

DATE	15JAN05
31JAN05	
25FEB05	

SCALE	5:1
1 OF 1	
1 OF 1	
1 OF 1	
1 OF 1	

**DELPHI**  
 DELPHI PACKARD ELECTRICAL/ELECTRONIC ARCHITECTURE  
 WARREN, OH

CONN 4 F W/P 280

12052856

DATE: 20-03-10 Time: 12:28