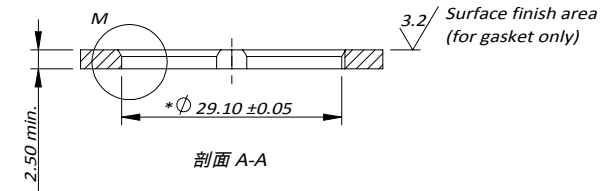
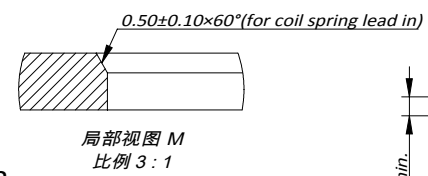
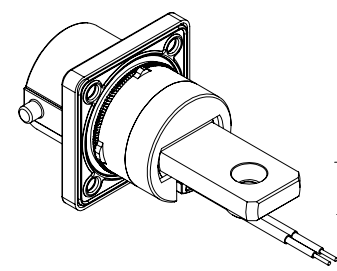
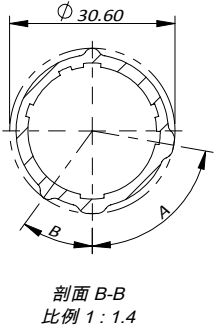
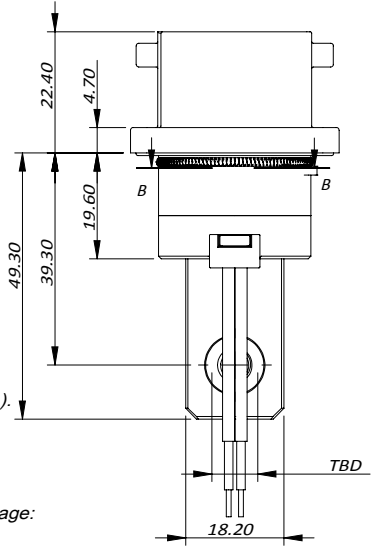
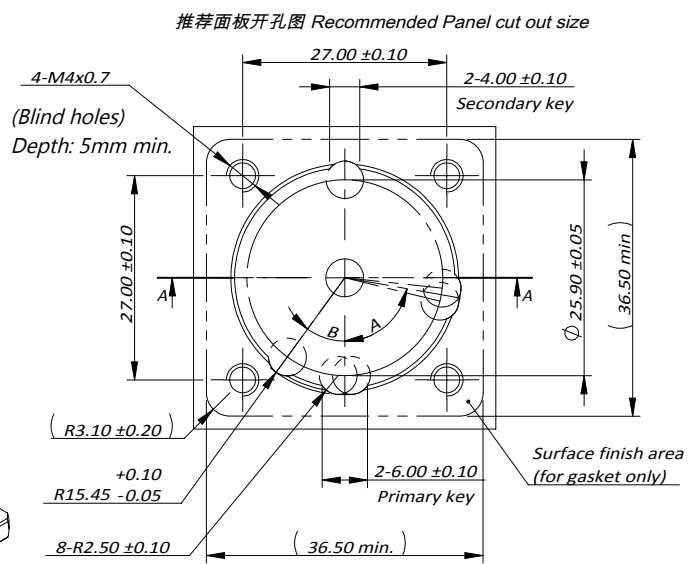
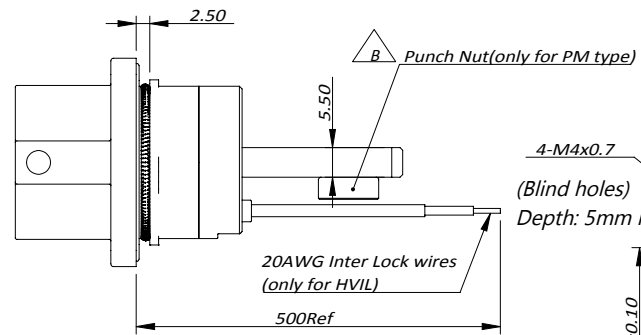
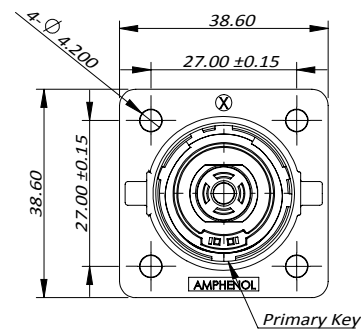


THIS DRAWING IS SUPPLIED FOR INFORMATION ONLY. DESIGN FEATURES, SPECIFICATIONS AND PERFORMANCE DATA SHOWN HEREON ARE THE PROPERTY OF THE AMPHENOL CORPORATION. NO RIGHTS OF REPRODUCTION ARE IMPLIED. ALL DIMENSIONS ARE SUBJECT TO NORMAL MANUFACTURING VARIATIONS.

# CUSTOMER DRAWING

REVISIONS					
REV#	ECN#	REVISION ACTION	REV.BY:	APPR.BY:	DATE
A	--	INITIAL RELEASE	JX	JL	03/09/2020
B	--	增加规格参数和Punch Nut 说明	Star	James	10/29/2020

键位 Key	A	B
X	80°	36°
Y	50°	86°
U	36°	76°
V	100°	56°
W	130°	60°
T	144°	96°



- 规格参数 (Spec.):**
- 工作温度 Operating temperature: -40°C ~ +125°C.
  - 带高压互锁 Electrical interlock (HVIL).
  - 额定电流 Current rating: Power: 300A; HVIL: 5A.
  - 额定电压 Operating voltage: Power: 1000 VDC; Signal: 60 VDC.
  - 耐电压 Dielectric withstanding voltage:
    - A. 与插头对插后, Pin与铁壳之间: When mated, between pin and metal shell: 5000 VDC.
    - B. 与插头对插后, Pin与HVIL之间: When mated, between pin and HVIL: 5000 VDC.
    - C. 与插头对插后, HVIL与铁壳之间: When mated, between HVIL and metal shell: 500 VDC.
    - D. 与插头对插前, 两个HVIL端子之间耐压: Before mating, between two HVIL terminals: 500 VDC.
  - 防护等级 Protection class: Mated-IP6k9k & IP67, unmated-IP2X.
  - 电磁屏蔽 360° full Shielding.
  - 机械寿命 Mating cycle: 100 Min.
  - 绝缘材料满足 UL94V-0 Inner insulation material satisfy UL94V-0.
  - 推荐法兰盘螺丝安装扭矩 Recommended Screw Assembly Torque on Flange: 1.6~2.4Nm
  - 推荐铜排安装扭矩 Recommended Fasten Torque on Lug: M6: 3.6~4.4Nm, M8: 7.2~8.8Nm
  - 镀灰锌/锌镍合金, 符合RoHS, 满足500H中性盐雾实验 Gray Zinc/Nickel (ZnNi) Plating. RoHS compliant, Rated at 500 hours salt spray.

## 订购信息 Ordering Information

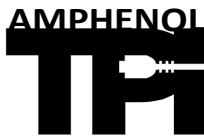
**PL 00 X-30X - 10D8 - 2**

Key and Color	HVIL	Hole Type
"X", Orange	"0", NO HVIL	"D", Through Hole
"Y", Black	"1", With HVIL	"M"=thread hole
"U", Yellow		"H"=slot hole
"V", Green		"PM"=Punch Nut
"W", Red		
"T", Blue		

		Amphenol Technical Products International Asia.					PART NAME:	
		第三角投影 THIRD ANGLE PROJECTION	页面 SHEET	幅面 SIZE	版次 REV.	比例 SCALE	PwrLok 10mm G2 1POS Rcpt Lug	
签名 SIGNATURE		日期 DATE		UNLESS OTHERWISE SPECIFIED			DWG NO:	
制图 DRAWN		Star		1) All dimensions are in metric (mm). 2) Tolerances are as follows:			PL00X-30X-10XX-2	
审核 CHECKED				1. PL DEC ± 1.00 2. PL DEC ± 0.50 3. PL DEC ± 0.20			CUST PART #	
批准 APPROVAL				Angles ±1°			CUST REV.	

THIS DRAWING IS SUPPLIED FOR INFORMATION ONLY. DESIGN FEATURES, SPECIFICATIONS AND PERFORMANCE DATA SHOWN HEREON ARE THE PROPERTY OF THE AMPHENOL CORPORATION. NO RIGHTS OF REPRODUCTION ARE IMPLIED. ALL DIMENSIONS ARE SUBJECT TO NORMAL MANUFACTURING VARIATIONS.

1		2		3		4		5		6		7		8		
型号		AC P/N		型号		AC P/N		REVISIONS								
REV#	ECN#	REVISION ACTION				REV.BY:	APPR.BY:	DATE								
PL00X-300-10M6-2	AC-HA010632	PL00X-301-10D10-2	AC-HA010698					A	--	INITIAL RELEASE				JX	JL	03/09/2020
PL00Y-300-10M6-2	AC-HA010633	PL00Y-301-10D10-2	AC-HA010699					B	--	增加规格参数和Punch Nut 说明				Star	James	10/29/2020
PL00U-300-10M6-2	AC-HA010634	PL00U-301-10D10-2	AC-HA010700													
PL00V-300-10M6-2	AC-HA010635	PL00V-301-10D10-2	AC-HA010701													
PL00W-300-10M6-2	AC-HA010636	PL00W-301-10D10-2	AC-HA010702													
PL00T-300-10M6-2	AC-HA010637	PL00T-301-10D10-2	AC-HA010703													
PL00X-300-10M8-2	AC-HA010638	PL00X-300-10PM6-2	AC-HA012138													
PL00Y-300-10M8-2	AC-HA010639	PL00Y-300-10PM6-2	AC-HA012139													
PL00U-300-10M8-2	AC-HA010640	PL00U-300-10PM6-2	AC-HA012140													
PL00V-300-10M8-2	AC-HA010641	PL00V-300-10PM6-2	AC-HA012141													
PL00W-300-10M8-2	AC-HA010642	PL00W-300-10PM6-2	AC-HA012142													
PL00T-300-10M8-2	AC-HA010643	PL00T-300-10PM6-2	AC-HA012143													
PL00X-300-10D6-2	AC-HA010650	PL00X-301-10PM6-2	AC-HA012144													
PL00Y-300-10D6-2	AC-HA010651	PL00Y-301-10PM6-2	AC-HA012145													
PL00U-300-10D6-2	AC-HA010652	PL00U-301-10PM6-2	AC-HA012146													
PL00V-300-10D6-2	AC-HA010653	PL00V-301-10PM6-2	AC-HA012147													
PL00W-300-10D6-2	AC-HA010654	PL00W-301-10PM6-2	AC-HA012148													
PL00T-300-10D6-2	AC-HA010655	PL00T-301-10PM6-2	AC-HA012149													
PL00X-300-10D8-2	AC-HA010656															
PL00Y-300-10D8-2	AC-HA010657															
PL00U-300-10D8-2	AC-HA010658															
PL00V-300-10D8-2	AC-HA010659															
PL00W-300-10D8-2	AC-HA010660															
PL00T-300-10D8-2	AC-HA010661															
PL00X-300-10D10-2	AC-HA010662															
PL00Y-300-10D10-2	AC-HA010663															
PL00U-300-10D10-2	AC-HA010664															
PL00V-300-10D10-2	AC-HA010665															
PL00W-300-10D10-2	AC-HA010666															
PL00T-300-10D10-2	AC-HA010667															
PL00X-301-10M6-2	AC-HA010668															
PL00Y-301-10M6-2	AC-HA010669															
PL00U-301-10M6-2	AC-HA010670															
PL00V-301-10M6-2	AC-HA010671															
PL00W-301-10M6-2	AC-HA010672															
PL00T-301-10M6-2	AC-HA010673															
PL00X-301-10M8-2	AC-HA010674															
PL00Y-301-10M8-2	AC-HA010675															
PL00U-301-10M8-2	AC-HA010676															
PL00V-301-10M8-2	AC-HA010677															
PL00W-301-10M8-2	AC-HA010678															
PL00T-301-10M8-2	AC-HA010679															
PL00X-301-10D6-2	AC-HA010686															
PL00Y-301-10D6-2	AC-HA010687															
PL00U-301-10D6-2	AC-HA010688															
PL00V-301-10D6-2	AC-HA010689															
PL00W-301-10D6-2	AC-HA010690															
PL00T-301-10D6-2	AC-HA010691															
PL00X-301-10D8-2	AC-HA010692															
PL00Y-301-10D8-2	AC-HA010693															
PL00U-301-10D8-2	AC-HA010694															
PL00V-301-10D8-2	AC-HA010695															
PL00W-301-10D8-2	AC-HA010696															
PL00T-301-10D8-2	AC-HA010697															

	<b>Amphenol Technical Products International Asia.</b>										
	第三角投影 <b>THIRD ANGLE PROJECTION</b>	页面 <b>SHEET</b>	幅面 <b>SIZE</b>	版次 <b>REV.</b>	比例 <b>SCALE</b>	<b>PART NAME:</b> PwrLok 10mm G2 1POS Rcpt Lug					
签名 <b>SIGNATURE</b>	日期 <b>DATE</b>	<b>UNLESS OTHERWISE SPECIFIED</b> 1) All dimensions are in metric(mm). 2) Tolerances are as follows: 1.PL DEC ± 1.00 2.PL DEC ± 0.50 3.PL DEC ± 0.20			<b>DWG NO:</b> PL00X-30X-10XX-2						
制图 <b>DRAWN</b>	Star	10/29/2020	Angles ±1°			<b>CUST PART #</b> N/A			<b>CUST REV.</b> N/A		
审核 <b>CHECKED</b>											
批准 <b>APPROVAL</b>											