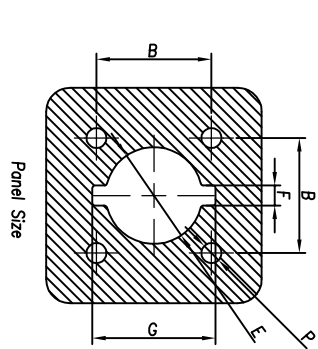
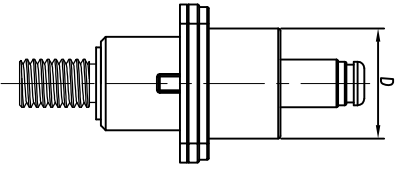
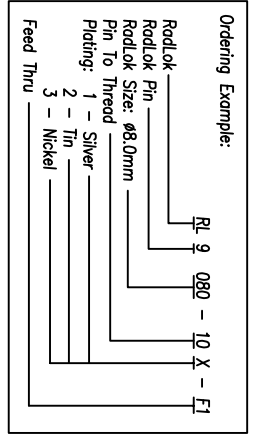
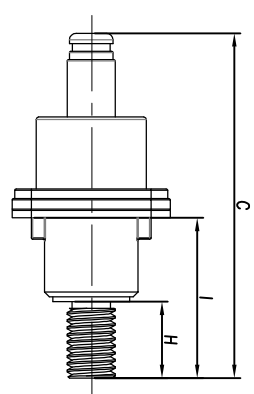
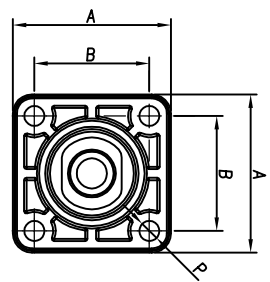
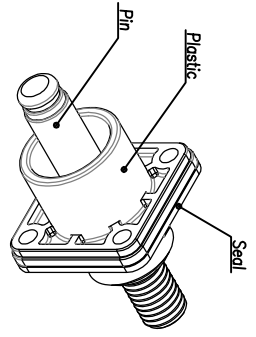



CUSTOMER DRAWING



Note:
The maximum thickness of recommended install panel is 3mm.

Size (mm)	A (mm)	B (mm)	C (mm)	D (mm)	E (mm)	F (mm)	G (mm)	H (mm)	I (mm)	Thread	P	Current (A)	Ordering Number (XXX-For Plating)	Plating
3.6	21.0	14.0	43.9	11.9	11.9	28	15.2	8	22.2	M4x0.7-6g	M3	70	RL9036-10X-F1	1 Silver 2 Tin 3 Nickel
5.7	25.0	17.0	49.6	15.2	14.7	28	18.2	10	24.2	M6x1.0-6g	M3	120	RL9057-10X-F1	
8.0	30.0	21.0	56.4	19.6	18.2	28	23.7	12	25.0	M8x1.25-6g	M4	200	RL9080-10X-F1	
10.0	33.0	24.0	67.0	23.0	20.6	42	25.7	16	29.0	M10x1.5-6g	M4	300	RL9100-10X-F1	
12.0	36.0	26.0	72.0	25.5	23.3	42	27.7	20	33.0	M12x1.75-6g	M4	400	RL9120-10X-F1	
14.0	37.0	27.0	83.0	28.0	27.3	42	31.8	23	36.0	M14x2.0-6g	M4	500	RL9140-10X-F1	

REV	DESCRIPTION	DATE	BY	APP
A	INITIAL RELEASE	12/12/13	DH	EC
B	CHANGE THE STRUCTURE	01/28/14	DH	EC
C	CHANGE THE STRUCTURE	02/07/14	DH	EC
D	ADD TORQUE FORCE	03/19/14	DH	EC
E	ADD SIZE 14.0mm	06/12/14	DH	EC
F	CHANGE DIMENSION - E, G FOR SIZE 14.0	09/15/14	DH	EC



Amphenol Technical Products International GZ

日期 DATE	签名 SIGNATURE	审核 CHECKED	批准 APPROVAL
02/07/2014		DX	EC
02/07/2014		DX	EC

尺寸 Size (mm)	3.6	5.7	8.0	10.0	12.0	14.0
扭矩 Torque (N.m)	2.5±0.2	4±0.4	7.5±0.5	20±1	24±1	32±1

第三阶段
THIRD ANGLE
PROJECTION

第一面 SHEET 1 OF 2

第二面 SIZE A3

第三面 REV. F

第四面 SCALE

UNLESS OTHERWISE SPECIFIED

1) All dimensions are in metric (mm).

2) Tolerances are as follows:
1 PL DEC ±0.30
2 PL DEC ±0.20

ANGLES ±1°

PART NAME: RADLOK® Feed Thru Pin To Thread

DWG NO: See Table

CUST PART #: N/A

CUST REV: F

THIS DRAWING IS SUPPLIED FOR INFORMATION ONLY. DESIGN FEATURES, SPECIFICATIONS AND PERFORMANCE DATA SHOWN HEREON ARE THE PROPERTY OF THE AMPHENOL CORPORATION. NO RIGHTS OF REPRODUCTION ARE IMPLIED. ALL DIMENSIONS ARE SUBJECT TO NORMAL MANUFACTURING VARIATIONS.

CUSTOMER DRAWING

REV	DESCRIPTION	DATE	BY	APPR
A	INITIAL RELEASE	12/12/13	DH	EC
B	CHANGE THE STRUCTURE	01/26/14	DH	EC
C	CHANGE THE STRUCTURE	02/07/14	DH	EC
D	ADD TORQUE FORCE	03/19/14	DH	EC
E	ADD SIZE 14.0mm	06/12/14	DH	EC
F	CHANGE DIMENSION - C FOR SIZE 14.0	09/15/14	DH	EC

REVISIONS

Plating Type	Size	Description	FG P/N(BK)	FG P/N(OR)	FG P/N(RE)
Silver 鍍銀	3.6mm	RL9036-101-F1 M4	AC-HA000375	AC-HA001613	AC-HA001703
	4.8mm	RL9048-101-F1 M5	AC-HA000376	AC-HA001614	AC-HA001704
	5.7mm	RL9057-101-F1 M6	AC-HA000377	AC-HA001615	AC-HA001705
	8.0mm	RL9080-101-F1 M8	AC-HA000378	AC-HA001616	AC-HA001706
	9.1mm	RL9091-101-F1 M9	AC-HA000379	AC-HA001617	AC-HA001707
	10.0mm	RL9100-101-F1 M10	AC-HA000380	AC-HA001618	AC-HA001708
	12.0mm	RL9120-101-F1 M12	AC-HA000381	AC-HA001619	AC-HA001709
	14.0mm	RL9140-101-F1 M14	AC-HA000382	AC-HA001620	AC-HA001710
	3.6mm	RL9036-102-F1 M4	AC-HA001014	AC-HA001643	AC-HA001733
	4.8mm	RL9048-102-F1 M5	AC-HA001015	AC-HA001644	AC-HA001734
Tin 鍍錫	5.7mm	RL9057-102-F1 M6	AC-HA001016	AC-HA001645	AC-HA001735
	8.0mm	RL9080-102-F1 M8	AC-HA001017	AC-HA001646	AC-HA001736
	9.1mm	RL9091-102-F1 M9	AC-HA001018	AC-HA001647	AC-HA001737
	10.0mm	RL9100-102-F1 M10	AC-HA001019	AC-HA001648	AC-HA001738
	12.0mm	RL9120-102-F1 M12	AC-HA001020	AC-HA001649	AC-HA001739
	14.0mm	RL9140-102-F1 M14	AC-HA001021	AC-HA001650	AC-HA001740
	3.6mm	RL9036-103-F1 M4	AC-HA000324	AC-HA001673	AC-HA001763
	4.8mm	RL9048-103-F1 M5	AC-HA000325	AC-HA001674	AC-HA001764
	5.7mm	RL9057-103-F1 M6	AC-HA000326	AC-HA001675	AC-HA001765
	8.0mm	RL9080-103-F1 M8	AC-HA000327	AC-HA001676	AC-HA001766
Nickel 鍍鎳	9.1mm	RL9091-103-F1 M9	AC-HA000328	AC-HA001677	AC-HA001767
	10.0mm	RL9100-103-F1 M10	AC-HA000329	AC-HA001678	AC-HA001768
	12.0mm	RL9120-103-F1 M12	AC-HA000330	AC-HA001679	AC-HA001769
	14.0mm	RL9140-103-F1 M14	AC-HA000331	AC-HA001680	AC-HA001770

Table



Amphenol Technical Products International GZ

姓名 SIGNATURE	日期 DATE	第三角投影 THIRD ANGLE PROJECTION	页面 SHEET	幅面 SIZE	版次 REV	比例 SCALE	PART NAME
制图 DRAWN	02/07/2014	第一角投影 FIRST ANGLE PROJECTION	2 OF 2	A3	F	1:1	RADLOK® Feed Thru Pin To Thread
审核 CHECKED	02/07/2014	UNLESS OTHERWISE SPECIFIED		1) All dimensions are in metric(mm).		DWG NO: See Table	
批准 APPROVAL	02/07/2014	2) Tolerances are as follows:		0 Pl. DEC ±1.00		CUST PART #: N/A	
		1 Pl. DEC ±0.50		2 Pl. DEC ±0.20		角分 ±1'	
						QIST REV: F	

THIS DRAWING IS SUPPLIED FOR INFORMATION ONLY. DESIGN FEATURES, SPECIFICATIONS AND PERFORMANCE DATA SHOWN HEREON ARE THE PROPERTY OF THE AMPHENOL CORPORATION. NO RIGHTS OF REPRODUCTION ARE IMPLIED. ALL DIMENSIONS ARE SUBJECT TO NORMAL MANUFACTURING VARIATIONS.