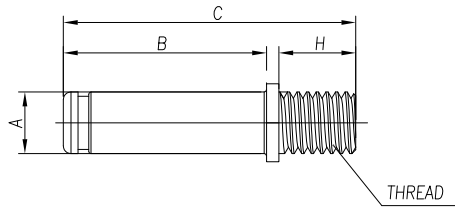
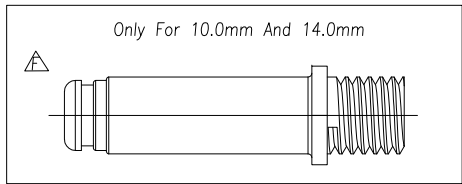


CUSTOMER DRAWING



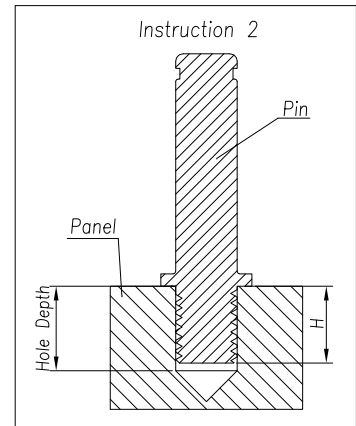
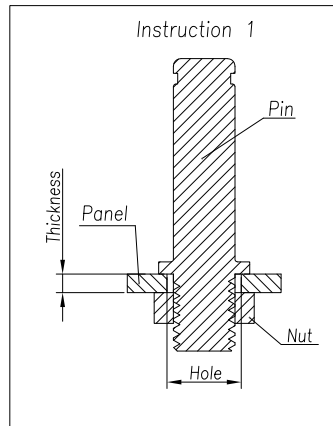
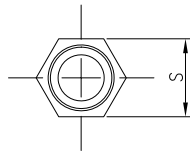
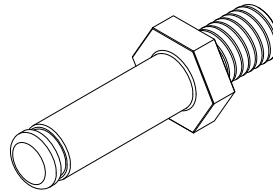
Ordering Example:

RL 9 080 - 101

RadLok
RadLok Pin
RadLok Size: $\phi 8.0\text{mm}$
Surface Finish: Silver

Note:
Material: Copper Alloy.

Specification											
Pin Size (mm)	A (mm)	B (mm)	C (mm)	H (mm)	S (mm)	Thickness (mm)	Thread	Torque Force (N.m)	Current(A)	Ordering Number (101-For Plating)	Plating
3.6	3.6	17.5	28.0	8	7.0	1.0~2.5	M4 X 0.7 - 6g	2.5±0.2	70	RL9036-101	101 Silver
5.7	5.7	21.1	34.1	10	10.0	1.0~2.5	M6 X 1.0 - 6g	4.0±0.4	120	RL9057-101	
8.0	8.0	26.4	42.4	12	13.0	1.0~3.5	M8 X 1.25 - 6g	7.5±0.5	200	RL9080-101	
10.0	10.0	32.2	53.2	16	16.0	1.0~4.0	M10 X 1.5 - 6g	20±1	300	RL9100-101	
12.0	12.0	32.6	58.6	20	18.0	1.0~4.5	M12 X 1.75 - 6g	24±1	400	RL9120-101	
14.0	14.0	41.0	72.0	23	24.0	1.0~4.5	M12 X 1.75 - 6g	24±1	500	RL9140-101	



REVISIONS				
REV	DESCRIPTION	DATE	BY	APPR
A	INITIAL RELEASE	01/04/14	DH	EC
B	CHANGE THE STRUCTURE OF PIN	01/26/14	DH	EC
C	CHANGE THE STRUCTURE OF PIN	02/06/14	DH	EC
D	ADD TORQUE FORCE	03/19/14	DH	EC
E	ADD RadLok Pin 14.0	04/01/15	VF	EC
F	Add a view of 10.0 and 14.0	01/11/18	KW	JG
G	CHANGE THE STRUCTURE OF PIN 14.0	07/09/18	DL	JL
H	Cancel Nickel and Tin Plating	04/14/20	DL	JL
I	Remove Nickel and Tin Plating Logo	06/11/20	DL	JL

		Amphenol Technical Products International GZ				
		第三角投影 THIRD ANGLE PROJECTION	页面 SHEET	幅面 SIZE	版次 REV.	比例 SCALE.
签名 SIGNATURE 制图 DRAWN 审核 CHECKED 批准 APPROVAL		日期 DATE 06/11/2020 06/11/2020 06/11/2020		UNLESS OTHERWISE SPECIFIED 1) All dimensions are in metric(mm). 2) Tolerances are as follows: 0 PL DEC ±1.00 1 PL DEC ±0.50 2 PL DEC ±0.20		DWG NO: See Table CUST PART #: N/A
				Angles ±1°		CUST REV. N/A

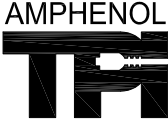
THIS DRAWING IS SUPPLIED FOR INFORMATION ONLY. DESIGN FEATURES, SPECIFICATIONS AND PERFORMANCE DATA SHOWN HEREON ARE THE PROPERTY OF THE AMPHENOL CORPORATION. NO RIGHTS OF REPRODUCTION ARE IMPLIED. ALL DIMENSIONS ARE SUBJECT TO NORMAL MANUFACTURING VARIATIONS.

CUSTOMER DRAWING

REVISIONS				
REV	DESCRIPTION	DATE	BY	APPR
A	INITIAL RELEASE	01/04/14	DH	EC
B	CHANGE THE STRUCTURE OF PIN	01/26/14	DH	EC
C	CHANGE THE STRUCTURE OF PIN	02/06/14	DH	EC
D	ADD TORQUE FORCE	03/19/14	DH	EC
E	ADD RadLok Pin 14.0	04/01/15	VF	EC
F	Add a view of 10.0 and 14.0	01/11/18	KW	JG
G	CHANGE THE STRUCTURE OF PIN 14.0	07/09/18	DL	JL
H	Cancel Nickel and Tin Plating	04/14/20	DL	JL
I	Remove Nickel and Tin Plating Logo	06/11/20	DL	JL

Table			
Plating Type	Size	Description	FG P/N
Silver	3.6mm	RL Pin RL9036-101	AC-CP000102
	5.7mm	RL Pin RL9057-101	AC-CP000104
	8.0mm	RL Pin RL9080-101	AC-CP000105
	10.0mm	RL Pin RL9100-101	AC-CP000107
	12.0mm	RL Pin RL9120-101	AC-CP000110
	14.0mm	RL Pin RL9140-101	AC-CP000111

THIS DRAWING IS SUPPLIED FOR INFORMATION ONLY. DESIGN FEATURES, SPECIFICATIONS AND PERFORMANCE DATA SHOWN HEREON ARE THE PROPERTY OF THE AMPHENOL CORPORATION. NO RIGHTS OF REPRODUCTION ARE IMPLIED. ALL DIMENSIONS ARE SUBJECT TO NORMAL MANUFACTURING VARIATIONS.

		Amphenol Technical Products International GZ				PART NAME:	
		第三角投影 THIRD ANGLE PROJECTION	页面 SHEET	幅面 SIZE	版次 REV.	比例 SCALE.	RadLok Pin
签名 SIGNATURE		日期 DATE		UNLESS OTHERWISE SPECIFIED 1) All dimensions are in metric(mm). 2) Tolerances are as follows: 0 PL DEC ±1.00 1 PL DEC ±0.50 2 PL DEC ±0.20		DWG NO:	
制图 DRAWN	DL	06/11/2020		Angles ±1°		See Table	
审核 CHECKED	YM	06/11/2020				CUST PART #:	N/A
批准 APPROVAL	JL	06/11/2020				CUST REV.	N/A