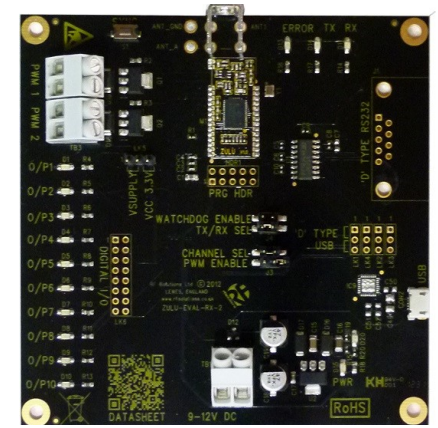
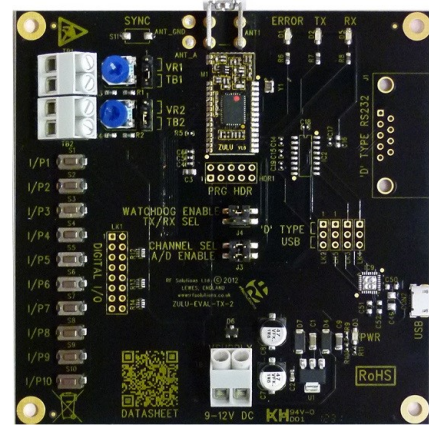


Smart Radio Telemetry Module

Features

- Small Form Factor
- 2 Analogue I/O (10bit)
- Data Reception LED
- Secure Data Protocol
- Easy Pairing Process
- One to One operation
- M100mW Transmit Power
- 10 Digital Input / Outputs
- Range up to 2,000 Metres
- 868MHz Operating Frequency
- 10 Channel Transceiver Module
- 90-100KHz PWM
- CE Compliant, Licence Free Use



Applications

- Remote Control
- Remote Networking
- Remote Switching
- Remote Traffic Lights

Description

The ZULU Telemetry Module provides a reliable Transceiver based industrial Remote Switch with up to 2,000 metres range. Two modules are combined to provide a simple network of radio switching. Each unit is supplied ready to operate, once paired with another Module a remote control system is created. Connections for Power, antenna and Input / Output are the only connections required.

Ordering Information

Part No	Description
ZULU-EVALT	Radio Telemetry Module SMT Package
PSU-12V1A-UK	Power Supply 12V 100mA

The following descriptions apply to the Zulu Module in TRANSMITTER Mode

When configured as a Transmitter the ZULU Module will automatically default to low power sleep mode until any input state change takes place.

On receipt of an input state change the ZULU TX will transmit a packet showing the status of all inputs (multiple state changes can take place simultaneously).

The ZULU TX will remain "awake" until:

1. The paired ZULU RX Module has acknowledged, or
2. A timeout value of 4 retry transmissions. (Pin 14 output will then be flashed)

Analogue / Digital (pin 3)

This input configures Input 1-2 to be analogue or Digital inputs.

Note: this input is read at power up only.

Analogue Inputs (4,5)

If enabled each input is 10bit A/D which can accept a voltage between 0 -Vcc.

Each input is sampled ten times per second, and the value is averaged before transmission. ZULU TX will transmit whenever there is a change in the detected input voltage of 0.025V.

If no change of voltage is measured then the ZULU TX will not transmit. A nominal 1uF capacitor is recommended across the analogue inputs in order to prevent noise being read and transmitted.

Note: A maximum of three RF packets are sent per second.

Digital Inputs

High Impedance Inputs, LVCMOS / LVTTTL compatible.

Can be connected directly to CMOS/TTL logic or switch inputs connected to 0V (active low).

A change on the input will cause the ZULU TX to wake, read the inputs and initiate RF transmission.

Watchdog Input (pin 13)

The watchdog is designed to enable the ZULU RX to be aware of any potential problems with the RF link to a sync'ed ZULU TX.

When activated the ZULU TX will automatically transmit a call in packet a regular basis every 10seconds. Input statuses are not sent as part of the watchdog signal.

Note: This pin is only read on power up. Watchdog is only valid on a 1-1 system.

RF Fault (pin 14)

Direct drive to LED. Each time the ZULU TX transmits the status of its inputs, it expects an acknowledgement from the paired receiver. If this is received then the RF Fault LED is not used. If no acknowledgement is received RF Fault is flashed.

RF Fault LED Status	Description
OFF	Receiver has acknowledged correctly
Flashing at 1Hz	No acknowledgment received

The following descriptions apply to the ZULU module in RECEIVER mode

Analogue outputs (pin 4, 5)

If enabled the ZULU RX outputs PWM signal.

The PWM may be used directly (e.g. for motor control).

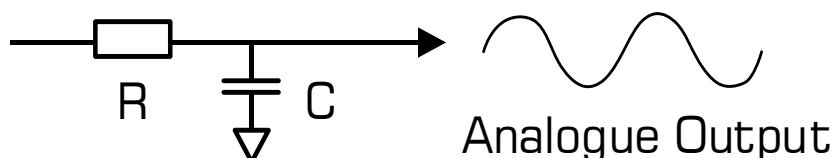
The PWM signal is a proportional digital output representing the analogue input.

If the analogue input is 0V then the PWM output will be '0'.

If the analogue input is $1/2V_{cc}$ then the PWM output will be a square wave with 50% duty cycle, (operating at approx 90-100KHz).

If the analogue input is V_{cc} then the PWM output will be '1'.

In order to re-create an analogue signal (representing the analogue input at the transmitter) the output should be fed through an RC network as above.



Digital outputs

CMOS / TTL compatible outputs. Can be connected directly to CMOS/TTL logic or drive.

Analogue / Digital (pin 3)

This input configures output 1-2 to be analogue or digital outputs.

Note: this input is read at power up only.

Watchdog Input (pin 13)

When activated the ZULU RX module will automatically expect to receive a watchdog signal from the ZULU TX on a regular basis (10seconds) If it has failed to receive this within a 30second period it will assert drop all outputs and flash the RF fault output.

RF fault

Direct drive to LED. Flashes when watchdog fails.

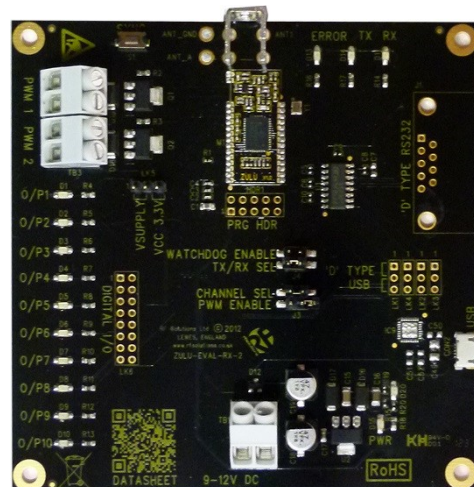
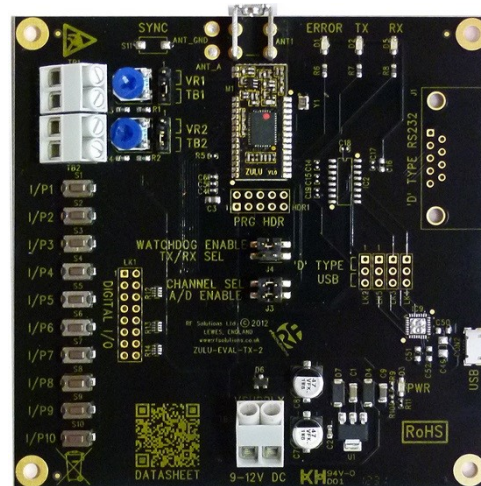
RF fault status	Description
OFF	ZULU RX has received watchdog correctly
Flashing at 2Hz	No watchdog received
OFF	Watchdog is inactive

ZULUT Evaluation Board

The ZULU EVAL Boards provide a ready to go platform which can be used for evaluation or complete projects. These boards demonstrate the capabilities of ZULU Modules.

Features

- Provides a Radio Link with;
 - 10 Digital Channels
 - 2 Analogue Channels (PWM)
- Watchdog Feature
- Direct Antenna Connection
- 9-12Vdc Power in Terminal
- LED Indication of
 - Power
 - Transmit / Receiver
 - RF Error



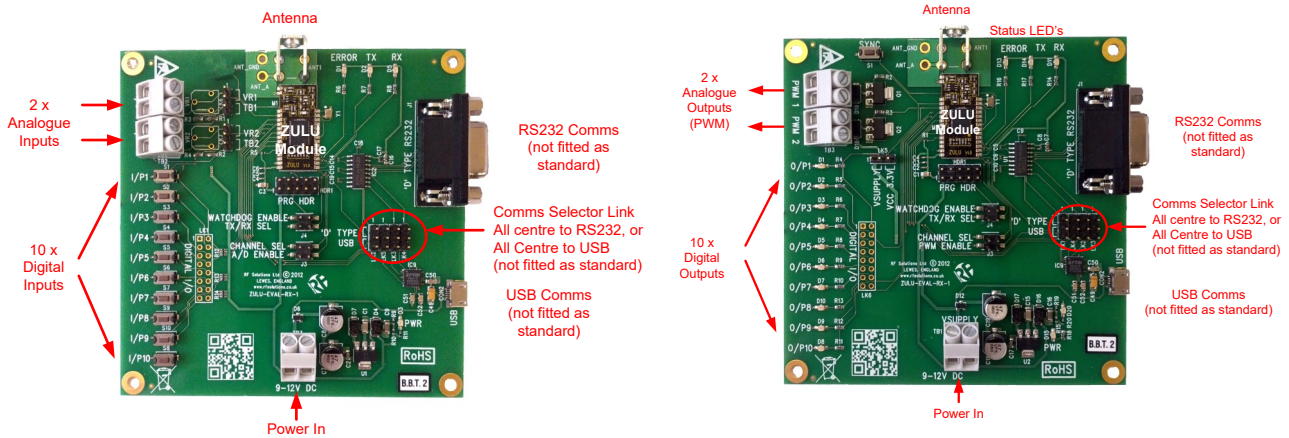
The Evaluation boards are sold as a TX and RX PCB pair, ready for component use.

Ordering Information

Part No	Description
ZULU-EVALT	Tx and RX PCB Pair
PSU-12V1A-UK	Power Supply 12V 100mA

ZULU Telemetry

ZuluT Evaluation Board Configuration



Overview

When paired together the outputs of the receiver will follow the inputs at the transmitter. The serial outputs also provide data from the receiver.

To get up an running complete the following;

1. Set the jumper links as below
2. Screw in Antenna
3. Apply power
4. Pair together the receiver and transmitter board

Reference	Name	When Fitted	When Open
J3 (Transmitter)	A/D	I/O 1 & 2 are analogue operation	I/O 1 & 2 are set to Digital operation
J3 (Receiver)	PWM Enable	Enables PWM Output	Output's 1 & 2 set to Digital
J3	Channel Select	ZULU operates on Channel A	ZULU operates on Channel B
J4	TX/ RX Select	ZULU set as Receiver	ZULU set as Transmitter
J4	Watchdog Enable	Watchdog enabled	Watchdog Disabled
LK1-LK4	Comms Select	All links from Centre to USB All links from Centre to RS232	N/A
LK5 (Receiver)	PWM Supply	Vcc: PWM is powered from Vcc VSUPPLY: PWM is powered from incoming V supply at TB1	

Pairing Process

In order to pair together a Transmitter and receiver,

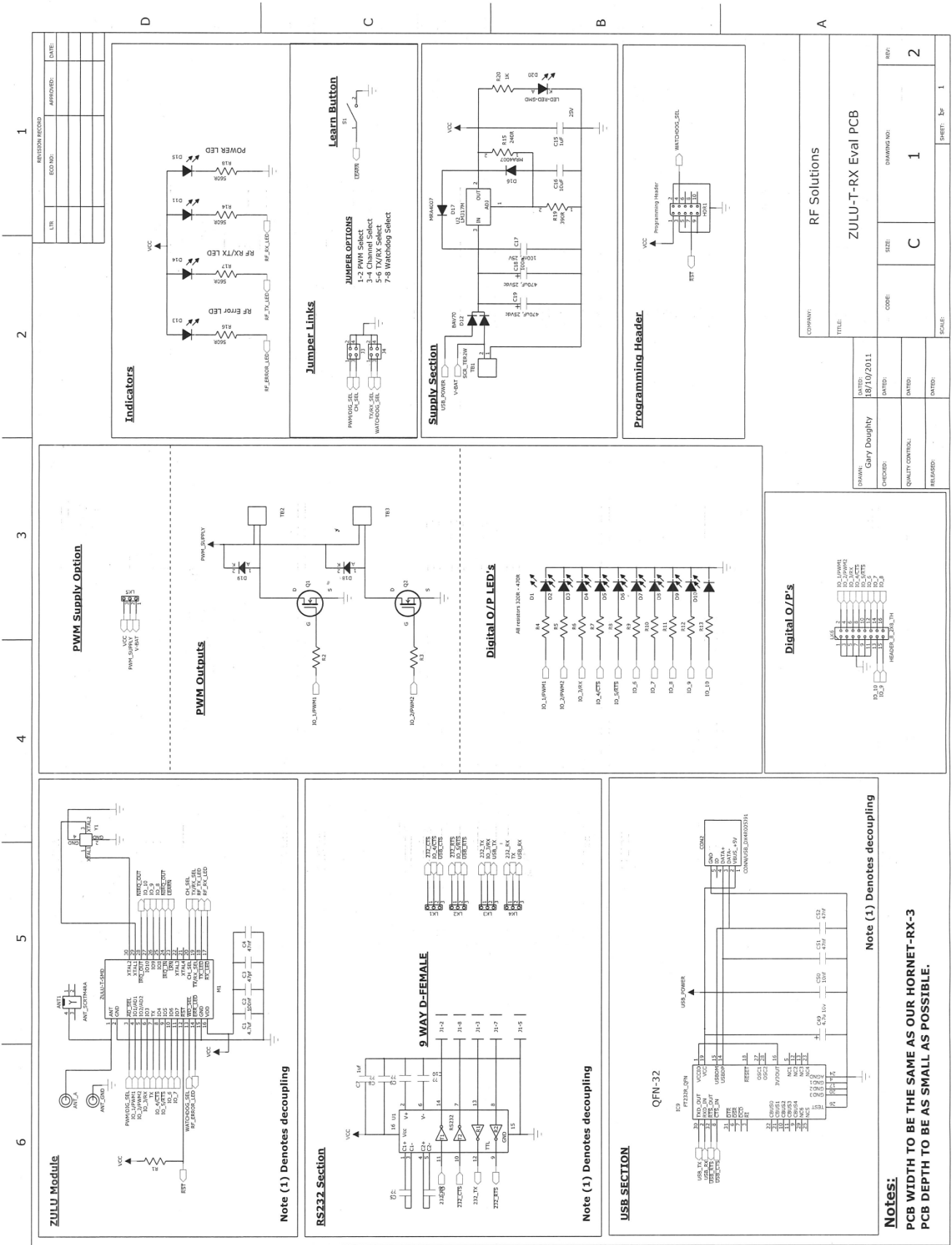
1. On the Receiver Briefly press the Receiver 'Sync Button'
2. Briefly operate any of the transmitter buttons

For all other operation please refer to the ZULU Module operation.

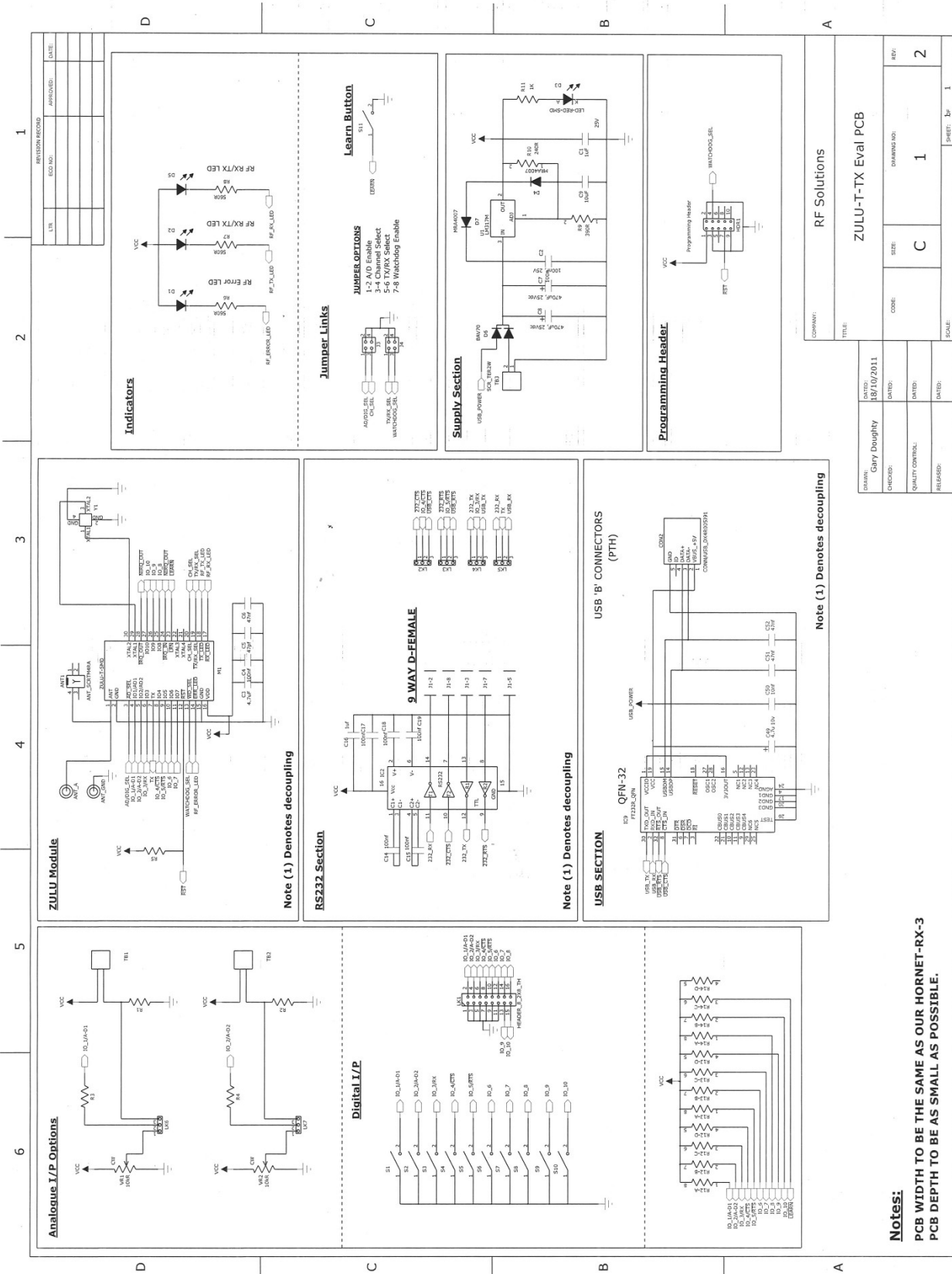
Analogue in / PWM Out

When using the analogue RF link, by turning the potentiometer VR1 or VR2, outputs 1 and 2 at the receiver will vary between 0 and 100% PWM, the EVAL-T board has these outputs connected to LED's 1 and 2 which will 'dim' their brightness with the adjustment of the transmitter VR1 and 2.

Zulu evaluation board receiver schematic



Zulu evaluation board transmitter PCB layout



BG - С настоящото RF Solutions Limited декларира, че този тип радиосъоръжение дефинирани в този документ е в съответствие с Директива 2014/53/ЕС. Цялостният текст на ЕС декларацията за съответствие може да се намери на следния интернет адрес: www.rfsolutions.co.uk

CS - Tímto RF Solutions Limited prohlašuje, že typ rádiového zařízení definované v tomto dokumentu je v souladu se směrnicí 2014/53/EU. Úplné znění EU prohlášení o shodě je k dispozici na této internetové adrese: www.rfsolutions.co.uk

DA - Hermed erklærer RF Solutions Limited, at radioudstyrstypen defineret i dette dokument er i overensstemmelse med direktiv 2014/53/EU. EU-overensstemmelseserklæringens fulde tekst kan findes på følgende internetadresse: www.rfsolutions.co.uk

DE - Hiermit erkläre RF Solutions Limited, dass der Funkanlagentyp in diesem Dokument definiert der Richtlinie 2014/53/EU entspricht. Der vollständige Text der EU-Konformitätserklärung ist unter der folgenden Internetadresse verfügbar: www.rfsolutions.co.uk

EL - Με την παρούσα ο/η RF Solutions Limited, δηλώνει ότι ο ραδιοεξοπλισμός ορίζεται σε αυτό το έγγραφο πληροί την οδηγία 2014/53/ΕΕ. Το πλήρες κείμενο της δήλωσης συμμόρφωσης ΕΕ διατίθεται στην ακόλουθη ιστοσελίδα στο διαδίκτυο: www.rfsolutions.co.uk

EN - Hereby, RF Solutions Limited declares that the radio equipment type defined within this document is in compliance with Directive 2014/53/EU. The full text of the EU declaration of conformity is available at the following internet address: www.rfsolutions.co.uk

ES - Por la presente, RF Solutions Limited declara que el tipo de equipo radioeléctrico definido dentro de este documento es conforme con la Directiva 2014/53/UE. El texto completo de la declaración UE de conformidad está disponible en la dirección Internet siguiente: www.rfsolutions.co.uk

ET - Käesolevaga deklareerib RF Solutions Limited, et käesolev raadioseadme tüüp määratletud selles dokumendis vastab direktiivi 2014/53/EL nõuetele. ELi vastavusdeklaratsiooni täielik tekst on kättesaadav järgmisel internetiaadressil: www.rfsolutions.co.uk

FI - RF Solutions Limited vakuuttaa, että radiolaitetyypin määriteltä selles dokumendis on direktiivin 2014/53/EU mukainen. EU-vaatimustenmukaisuusvakuutuksen täysimittainen teksti on saatavilla seuraavassa internetosoitteessa: www.rfsolutions.co.uk

FR - Le soussigné, RF Solutions Limited, déclare que l'équipement radioélectrique du type défini dans ce document est conforme à la directive 2014/53/UE. Le texte complet de la déclaration UE de conformité est disponible à l'adresse internet suivante: www.rfsolutions.co.uk

HR - RF Solutions Limited ovime izjavljuje da je radijska oprema tipa definirani u ovom dokumentu u skladu s Direktivom 2014/53/EU. Cjeloviti tekst EU izjave o sukladnosti dostupan je na sljedećoj internetskoj adresi: www.rfsolutions.co.uk

HU - RF Solutions Limited igazolja, hogy a dokumentumban meghatározottak szerint típusú rádióberendezés megfelel a 2014/53/EU irányelvnek. Az EU-megfelelőségi nyilatkozat teljes szövege elérhető a következő internetes címen: www.rfsolutions.co.uk

IT - Il fabbricante, RF Solutions Limited, dichiara che il tipo di apparecchiatura radio definito all'interno di questo documento è conforme alla direttiva 2014/53/UE. Il testo completo della dichiarazione di conformità UE è disponibile al seguente indirizzo Internet: www.rfsolutions.co.uk

LT - Aš, RF Solutions Limited, patvirtinu, kad radijo įrenginių tipas apibūžta šiame dokumente atitinka Direktyvą 2014/53/ES. Visas ES atitikties deklaracijos tekstas prieinamas šiuo interneto adresu: www.rfsolutions.co.uk

LV - Ar šo RF Solutions Limited deklarē, ka radioiekārta kas definēts šajā dokumentā atbilst Direktīvai 2014/53/ES. Pilns ES atbilstības deklarācijas teksts ir pieejams šādā interneta vietnē: www.rfsolutions.co.uk

MT - B'dan, RF Solutions Limited, niddikjara li dan it-tip ta' tagħmir tar-radju definit f'dan id-dokument huwa konformi mad-Direttiva 2014/53/UE. It-test kollu tad-dikjarazzjoni ta' konformità tal-UE huwa disponibbli f'dan l-indirizz tal-Internet li ġej: www.rfsolutions.co.uk

NL - Hierbij verklaar ik, RF Solutions Limited, dat het type radioapparaatuur gedefinieerd in dit document conform is met Richtlijn 2014/53/EU. De volledige tekst van de EU-conformiteitsverklaring kan worden geraadpleegd op het volgende internetadres: www.rfsolutions.co.uk

PL - RF Solutions Limited niniejszym oświadczam, że typ urządzenia radiowego zdefiniowane w tym dokumencie jest zgodny z dyrektywą 2014/53/UE. Pełny tekst deklaracji zgodności UE jest dostępny pod następującym adresem internetowym: www.rfsolutions.co.uk

PT - O(a) abaixo assinado(a) RF Solutions Limited declara que o presente tipo de equipamento de rádio definido neste documento está em conformidade com a Diretiva 2014/53/UE. O texto integral da declaração de conformidade está disponível no seguinte endereço de Internet: www.rfsolutions.co.uk

RO - Prin prezenta, RF Solutions Limited declară că tipul de echipament radio definit în acest document este în conformitate cu Directiva 2014/53/UE. Textul integral al declarației UE de conformitate este disponibil la următoarea adresă internet: www.rfsolutions.co.uk

SK - RF Solutions Limited týmto vyhlasuje, že rádiové zariadenie typu definované v tomto dokumente je v súlade so smernicou 2014/53/EÚ. Úplné EÚ vyhlásenie o zhode je k dispozícii na tejto internetovej adrese: www.rfsolutions.co.uk

SL - RF Solutions Limited potrjuje, da je tip radijske opreme opredeljeno v tem dokumentu skladen z Direktivo 2014/53/EU. Celotno besedilo izjave EU o skladnosti je na voljo na naslednjem spletnem naslovu: www.rfsolutions.co.uk

SV - Härmed försäkrar RF Solutions Limited att denna typ av radioutrustning definieras i detta dokument överensstämmer med direktiv 2014/53/EU. Den fullständiga texten till EU-försäkran om överensstämmelse finns på följande webbadress: www.rfsolutions.co.uk

RF Solutions Ltd. Recycling Notice

Meets the following EC Directives:

DO NOT

Discard with normal waste, please recycle.

ROHS Directive 2011/65/EU and amendment 2015/863/EU

Specifies certain limits for hazardous substances.

WEEE Directive 2012/19/EU

Waste electrical & electronic equipment. This product must be disposed of through a

licensed WEEE collection point. RF Solutions Ltd., fulfills its WEEE obligations by membership of an approved compliance scheme.

Environment Agency producer registration number: **WEE/JB0104WV**.



Waste Batteries and Accumulators Directive 2006/66/EC

Where batteries are fitted, before recycling the product, the batteries must be removed and disposed of at a licensed collection point. RF Solutions battery producer number: **BPRN00060**.

Disclaimer:

Whilst the information in this document is believed to be correct at the time of issue, RF Solutions Ltd does not accept any liability whatsoever for its accuracy, adequacy or completeness. No express or implied warranty or representation is given relating to the information contained in this document. RF Solutions Ltd reserves the right to make changes and improvements to the product(s) described herein without notice. Buyers and other users should determine for themselves the suitability of any such information or products for their own particular requirements or specification(s). RF Solutions Ltd shall not be liable for any loss or damage caused as a result of user's own determination of how to deploy or use RF Solutions Ltd's products. Use of RF Solutions Ltd products or components in life support and/or safety applications is not authorised except with express written approval. No licences are created, implicitly or otherwise, under any of RF Solutions Ltd's intellectual property rights. Liability for loss or damage resulting or caused by reliance on the information contained herein or from the use of the product (including liability resulting from negligence or where RF Solutions Ltd was aware of the possibility of such loss or damage arising) is excluded. This will not operate to limit or restrict RF Solutions Ltd's liability for death or personal injury resulting from its negligence.

www.rfsolutions.co.uk

RF Solutions Ltd

William Alexander House, William Way, Burgess Hill, West Sussex, RH15 9AG

Sales: +44 (0)1444 227900

Tech Support: +44 (0)1444 227909