

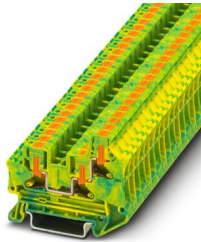
# Ground modular terminal block - PTV 6-TWIN-PE



1116739

<https://www.phoenixcontact.com/gb/products/1116739>

Please be informed that the data shown in this PDF document is generated from our Online Catalog. Please find the complete data in the user documentation. Our General Terms of Use for Downloads are valid.



Ground modular terminal block, number of connections: 3, number of positions: 1, connection method: Push-in connection, Rated cross section: 6 mm<sup>2</sup>, cross section: 0.5 mm<sup>2</sup> - 10 mm<sup>2</sup>, mounting type: NS 35/7,5, NS 35/15, color: green/yellow

## Your advantages

- Clear wiring, thanks to lateral conductor entry
- The compact design enables wiring in a confined space
- The Push-in connection terminal blocks are characterized by the system features of the CLIPLINE complete system
- In addition to the testing facility in the double function shaft, all terminal blocks provide an additional test connection

## Commercial Data

Item number	1116739
Packing unit	50 pc
Minimum order quantity	1 pc
Sales Key	BE2322
Product Key	BE2322
GTIN	4063151043612
Weight per Piece (including packing)	23.6 g
Weight per Piece (excluding packing)	23.6 g
Customs tariff number	85369010
Country of origin	CN

# Ground modular terminal block - PTV 6-TWIN-PE



1116739

<https://www.phoenixcontact.com/gb/products/1116739>

## Technical Data

### Notes

#### General

Note	When establishing a connection on the open housing side of a feed-through modular terminal block of the same series and size, the block must be provided with a cover if the expected insulation voltage is >690 V.
------	---

### Product properties

Product type	Ground terminal block
Number of positions	1
Area of application	Railway industry
	Machine building
	Plant engineering
	Process industry
Number of connections	3
Number of rows	1

#### Insulation characteristics

Overvoltage category	III
Degree of pollution	3

### Electrical properties

Rated surge voltage	8 kV
Maximum power dissipation for nominal condition	0 W

### Connection data

Grounding foot	Yes
Number of connections per level	3
Nominal cross section	6 mm <sup>2</sup>
Stripping length	10 mm ... 12 mm
Internal cylindrical gage	A5
Connection in acc. with standard	IEC 60947-7-2
Conductor cross section solid	0.5 mm <sup>2</sup> ... 10 mm <sup>2</sup>
Cross section AWG	20 ... 8 (converted acc. to IEC)
Conductor cross section flexible	0.5 mm <sup>2</sup> ... 10 mm <sup>2</sup>
Conductor cross section, flexible [AWG]	20 ... 8 (converted acc. to IEC)
Flexible conductor cross section flexible (ferrule, w/o plastic sleeve)	0.5 mm <sup>2</sup> ... 6 mm <sup>2</sup>
Flexible conductor cross section (ferrule with plastic sleeve)	0.5 mm <sup>2</sup> ... 6 mm <sup>2</sup>
Nominal cross section	6 mm <sup>2</sup>

#### Connection cross sections directly pluggable

Conductor cross section solid	1.5 mm <sup>2</sup> ... 10 mm <sup>2</sup>
-------------------------------	--

# Ground modular terminal block - PTV 6-TWIN-PE



1116739

<https://www.phoenixcontact.com/gb/products/1116739>

Conductor cross section, solid [AWG]	16 ... 8 (converted acc. to IEC)
Flexible conductor cross section flexible (ferrule, w/o plastic sleeve)	4 mm <sup>2</sup> ... 6 mm <sup>2</sup>
Flexible conductor cross section (ferrule with plastic sleeve)	2.5 mm <sup>2</sup> ... 6 mm <sup>2</sup>

## Dimensions

Width	8.2 mm
End cover width	2.2 mm
Height	57.6 mm
Height NS 35/15	66.6 mm
Height NS 35/7,5	59.1 mm
Length	72.9 mm

## Material specifications

Color	green/yellow
Flammability rating according to UL 94	V0
Insulating material group	I
Insulating material	PA 6.6
Static insulating material application in cold	-60 °C
Temperature index of insulation material (DIN EN 60216-1 (VDE 0304-21))	125 °C
Relative insulation material temperature index (Elec., UL 746 B)	130 °C
Fire protection for rail vehicles (DIN EN 45545-2) R22	HL 1 - HL 3
Fire protection for rail vehicles (DIN EN 45545-2) R23	HL 1 - HL 3
Fire protection for rail vehicles (DIN EN 45545-2) R24	HL 1 - HL 3
Fire protection for rail vehicles (DIN EN 45545-2) R26	HL 1 - HL 3
Calorimetric heat release NFPA 130 (ASTM E 1354)	27,5 MJ/kg
Surface flammability NFPA 130 (ASTM E 162)	passed
Specific optical density of smoke NFPA 130 (ASTM E 662)	passed
Smoke gas toxicity NFPA 130 (SMP 800C)	passed

## Mechanical properties

### Mechanical data

Open side panel	Yes
-----------------	-----

## Environmental and real-life conditions

### Oscillation/broadband noise

Specification	DIN EN 50155 (VDE 0115-200):2018-05
Spectrum	Service life test category 2, bogie-mounted
Frequency	f <sub>1</sub> = 5 Hz to f <sub>2</sub> = 250 Hz
ASD level	6.12 (m/s <sup>2</sup> ) <sup>2</sup> /Hz
Acceleration	3.12g
Test duration per axis	5 h
Test directions	X-, Y- and Z-axis

# Ground modular terminal block - PTV 6-TWIN-PE



1116739

<https://www.phoenixcontact.com/gb/products/1116739>

Result	Test passed
--------	-------------

## Shocks

Specification	DIN EN 50155 (VDE 0115-200):2018-05
Pulse shape	Half-sine
Acceleration	30g
Shock duration	18 ms
Number of shocks per direction	3
Test directions	X-, Y- and Z-axis (pos. and neg.)
Result	Test passed

## Ambient conditions

Ambient temperature (operation)	-60 °C ... 100 °C (max. short-term operating temperature RTI Elec.)
Ambient temperature (storage/transport)	-25 °C ... 60 °C (for a short time, not exceeding 24 h, -60 °C to +70 °C)
Ambient temperature (assembly)	-5 °C ... 70 °C
Ambient temperature (actuation)	-5 °C ... 70 °C
Permissible humidity (storage/transport)	30 % ... 70 %

## Standards and regulations

Connection in acc. with standard	IEC 60947-7-2
----------------------------------	---------------

## Mounting

Mounting type	NS 35/7,5
	NS 35/15

# Ground modular terminal block - PTV 6-TWIN-PE

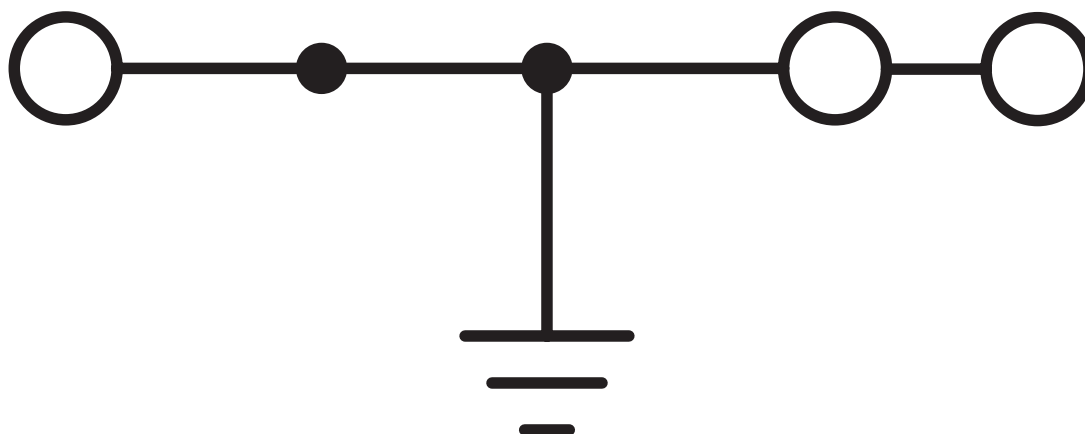


1116739

<https://www.phoenixcontact.com/gb/products/1116739>

## Drawings

Circuit diagram




# Ground modular terminal block - PTV 6-TWIN-PE





1116739

<https://www.phoenixcontact.com/gb/products/1116739>

## Approvals

 <b>cULus Recognized</b> Approval ID: E60425				
	Nominal Voltage $U_N$	Nominal Current $I_N$	Cross Section AWG	Cross Section $\text{mm}^2$
Use group B			20 - 8	-
Use group C			20 - 8	-
Use group F			20 - 8	-

 <b>EAC</b> Approval ID: RU C-DE.BL08.B.00644				
---	--	--	--	--

 <b>CSA</b> Approval ID: 158887				
	Nominal Voltage $U_N$	Nominal Current $I_N$	Cross Section AWG	Cross Section $\text{mm}^2$
Use group B			20 - 8	-
Use group C			20 - 8	-

 <b>UKCA-EX</b> Approval ID: CSAE 22UKEX1099U				
---	--	--	--	--

# Ground modular terminal block - PTV 6-TWIN-PE



1116739

<https://www.phoenixcontact.com/gb/products/1116739>

## Classifications

### ECLASS

ECLASS-9.0	27141141
ECLASS-10.0.1	27141141
ECLASS-11.0	27141120

### ETIM

ETIM 8.0	EC000897
----------	----------

### UNSPSC


UNSPSC 21.0	39121400
-------------	----------

# Ground modular terminal block - PTV 6-TWIN-PE

1116739

<https://www.phoenixcontact.com/gb/products/1116739>

## Accessories

 Note: Applying some accessories below might limit this product.

### Plug-in bridge

Plug-in bridge - FBS 2-8 - 3030284

<https://www.phoenixcontact.com/gb/products/3030284>



Plug-in bridge, pitch: 8.2 mm, color: red

 Max. current carrying capacity: 41 A

---


### Plug-in bridge

Plug-in bridge - FBS 3-8 - 3030297

<https://www.phoenixcontact.com/gb/products/3030297>



Plug-in bridge, pitch: 8.2 mm, color: red

 Max. current carrying capacity: 41 A



# Ground modular terminal block - PTV 6-TWIN-PE

1116739

<https://www.phoenixcontact.com/gb/products/1116739>

## Plug-in bridge

Plug-in bridge - FBS 4-8 - 3030307

<https://www.phoenixcontact.com/gb/products/3030307>



Plug-in bridge, pitch: 8.2 mm, color: red

 Max. current carrying capacity: 41 A

---

## Plug-in bridge

Plug-in bridge - FBS 5-8 - 3030310

<https://www.phoenixcontact.com/gb/products/3030310>



Plug-in bridge, pitch: 8.2 mm, color: red

 Max. current carrying capacity: 41 A

---

# Ground modular terminal block - PTV 6-TWIN-PE

1116739

<https://www.phoenixcontact.com/gb/products/1116739>

## Plug-in bridge

Plug-in bridge - FBS 6-8 - 3032470

<https://www.phoenixcontact.com/gb/products/3032470>



Plug-in bridge, pitch: 8.2 mm, color: red

 Max. current carrying capacity: 41 A

---


## Plug-in bridge

Plug-in bridge - FBS 10-8 - 3030323

<https://www.phoenixcontact.com/gb/products/3030323>



Plug-in bridge, pitch: 8.2 mm, color: red

 Max. current carrying capacity: 41 A

---

# Ground modular terminal block - PTV 6-TWIN-PE

1116739

<https://www.phoenixcontact.com/gb/products/1116739>

## Plug-in bridge

Plug-in bridge - FBS 2-8 CT - 3033830

<https://www.phoenixcontact.com/gb/products/3033830>



Plug-in bridge, pitch: 8.2 mm, color: orange

 Max. current carrying capacity: 41 A

---


## Plug-in bridge

Plug-in bridge - FBS 3-8 CT - 3033831

<https://www.phoenixcontact.com/gb/products/3033831>



Plug-in bridge, pitch: 8.2 mm, color: orange

 Max. current carrying capacity: 41 A

# Ground modular terminal block - PTV 6-TWIN-PE

1116739

<https://www.phoenixcontact.com/gb/products/1116739>

## Plug-in bridge

Plug-in bridge - FBS 4-8 CT - 3033832

<https://www.phoenixcontact.com/gb/products/3033832>



Plug-in bridge, pitch: 8.2 mm, color: orange

 Max. current carrying capacity: 41 A

---


## Plug-in bridge

Plug-in bridge - FBS 10-8 CT - 3033833

<https://www.phoenixcontact.com/gb/products/3033833>



Plug-in bridge, pitch: 8.2 mm, color: orange

 Max. current carrying capacity: 41 A

---

# Ground modular terminal block - PTV 6-TWIN-PE

1116739

<https://www.phoenixcontact.com/gb/products/1116739>

## Plug-in bridge

Plug-in bridge - FBS 2-8 BU - 3032567

<https://www.phoenixcontact.com/gb/products/3032567>



Plug-in bridge, pitch: 8.2 mm, color: blue

 Max. current carrying capacity: 41 A

---


## Plug-in bridge

Plug-in bridge - FBS 3-8 BU - 3032570

<https://www.phoenixcontact.com/gb/products/3032570>



Plug-in bridge, pitch: 8.2 mm, color: blue

 Max. current carrying capacity: 41 A

---

# Ground modular terminal block - PTV 6-TWIN-PE

1116739

<https://www.phoenixcontact.com/gb/products/1116739>

## Plug-in bridge

Plug-in bridge - FBS 4-8 BU - 3032583

<https://www.phoenixcontact.com/gb/products/3032583>



Plug-in bridge, pitch: 8.2 mm, color: blue

 Max. current carrying capacity: 41 A

---


## Plug-in bridge

Plug-in bridge - FBS 5-8 BU - 3032596

<https://www.phoenixcontact.com/gb/products/3032596>



Plug-in bridge, pitch: 8.2 mm, color: blue

 Max. current carrying capacity: 41 A

---

# Ground modular terminal block - PTV 6-TWIN-PE

1116739

<https://www.phoenixcontact.com/gb/products/1116739>

## Plug-in bridge

Plug-in bridge - FBS 6-8 BU - 3032677

<https://www.phoenixcontact.com/gb/products/3032677>



Plug-in bridge, pitch: 8.2 mm, color: blue

 Max. current carrying capacity: 41 A

---


## Plug-in bridge

Plug-in bridge - FBS 10-8 BU - 3032606

<https://www.phoenixcontact.com/gb/products/3032606>



Plug-in bridge, pitch: 8.2 mm, color: blue

 Max. current carrying capacity: 41 A

---

# Ground modular terminal block - PTV 6-TWIN-PE

1116739

<https://www.phoenixcontact.com/gb/products/1116739>

## Plug-in bridge

Plug-in bridge - FBS 2-8 GY - 3032621

<https://www.phoenixcontact.com/gb/products/3032621>



Plug-in bridge, pitch: 8.2 mm, color: gray

 Max. current carrying capacity: 41 A

---


## Plug-in bridge

Plug-in bridge - FBS 3-8 GY - 3032622

<https://www.phoenixcontact.com/gb/products/3032622>



Plug-in bridge, pitch: 8.2 mm, color: gray

 Max. current carrying capacity: 41 A

---



# Ground modular terminal block - PTV 6-TWIN-PE

1116739

<https://www.phoenixcontact.com/gb/products/1116739>


## Plug-in bridge

Plug-in bridge - FBS 4-8 GY - 3032635

<https://www.phoenixcontact.com/gb/products/3032635>

Plug-in bridge, pitch: 8.2 mm, color: gray



 Max. current carrying capacity: 41 A

---

## Plug-in bridge

Plug-in bridge - FBS 5-8 GY - 3032648

<https://www.phoenixcontact.com/gb/products/3032648>

Plug-in bridge, pitch: 8.2 mm, color: gray



 Max. current carrying capacity: 41 A

---

# Ground modular terminal block - PTV 6-TWIN-PE

1116739

<https://www.phoenixcontact.com/gb/products/1116739>

## Plug-in bridge

Plug-in bridge - FBS 6-8 GY - 3032664

<https://www.phoenixcontact.com/gb/products/3032664>



Plug-in bridge, pitch: 8.2 mm, color: gray

 Max. current carrying capacity: 41 A

---


## Plug-in bridge

Plug-in bridge - FBS 10-8 GY - 3032651

<https://www.phoenixcontact.com/gb/products/3032651>



Plug-in bridge, pitch: 8.2 mm, color: gray

 Max. current carrying capacity: 41 A

---

# Ground modular terminal block - PTV 6-TWIN-PE

1116739

<https://www.phoenixcontact.com/gb/products/1116739>

## Plug-in bridge

Plug-in bridge - FBS 1/4/7/10-8 - 3032402

<https://www.phoenixcontact.com/gb/products/3032402>



Plug-in bridge, pitch: 8.2 mm, pin assignment: 1,4,7,10, color: red

 Max. current carrying capacity: 41 A

---


## Plug-in bridge

Plug-in bridge - FBS 1/3/5-8 - 3032389

<https://www.phoenixcontact.com/gb/products/3032389>



Plug-in bridge, pitch: 8.2 mm, pin assignment: 1,3,5, color: red

 Max. current carrying capacity: 41 A

# Ground modular terminal block - PTV 6-TWIN-PE

1116739

<https://www.phoenixcontact.com/gb/products/1116739>

## Plug-in bridge

Plug-in bridge - FBS 1/5-8 - 3032381

<https://www.phoenixcontact.com/gb/products/3032381>



Plug-in bridge, pitch: 8.2 mm, pin assignment: 1,5, color: red

 Max. current carrying capacity: 41 A

---


## Plug-in bridge

Plug-in bridge - FBS 1/3-8 - 3032363

<https://www.phoenixcontact.com/gb/products/3032363>



Plug-in bridge, pitch: 8.2 mm, pin assignment: 1,3, color: red

 Max. current carrying capacity: 41 A

# Ground modular terminal block - PTV 6-TWIN-PE

1116739

<https://www.phoenixcontact.com/gb/products/1116739>

## Plug-in bridge

Plug-in bridge - FBSR 5-8 - 3033809

<https://www.phoenixcontact.com/gb/products/3033809>



Plug-in bridge, pitch: 8.2 mm, color: red

 Max. current carrying capacity: 32 A

---


## Plug-in bridge

Plug-in bridge - FBSR 10-8 - 3001599

<https://www.phoenixcontact.com/gb/products/3001599>



Plug-in bridge, pitch: 8.2 mm, color: red

 Max. current carrying capacity: 32 A

---

# Ground modular terminal block - PTV 6-TWIN-PE

1116739

<https://www.phoenixcontact.com/gb/products/1116739>

## Plug-in bridge

Plug-in bridge - FBSR 16-8 - 3033816

<https://www.phoenixcontact.com/gb/products/3033816>



Plug-in bridge, pitch: 8.2 mm, color: red

 Max. current carrying capacity: 32 A

---

## Cover

Cover - D-PTV 6-TWIN - 1180923

<https://www.phoenixcontact.com/gb/products/1180923>

Cover, length: 72.9 mm, width: 2.2 mm, height: 51.4 mm, color: gray



# Ground modular terminal block - PTV 6-TWIN-PE



1116739

<https://www.phoenixcontact.com/gb/products/1116739>

## Screwdriver

Screwdriver - SZK PH0 VDE - 1205147

<https://www.phoenixcontact.com/gb/products/1205147>



Screwdriver, PH crosshead, VDE insulated, size: PH 0 x 80 mm, 2-component grip, with non-slip grip

---

## Screwdriver

Screwdriver - SZK PH1 VDE - 1205150

<https://www.phoenixcontact.com/gb/products/1205150>



Screwdriver, PH crosshead, VDE insulated, size: PH 1 x 80 mm, 2-component grip, with non-slip grip

# Ground modular terminal block - PTV 6-TWIN-PE



1116739

<https://www.phoenixcontact.com/gb/products/1116739>

## Screwdriver

Screwdriver - SZK PH2 VDE - 1205163

<https://www.phoenixcontact.com/gb/products/1205163>



Screwdriver, PH crosshead, VDE insulated, size: PH 2 x 100 mm, 2-component grip, with non-slip grip

---

## Screwdriver

Screwdriver - SZK PZ0 VDE - 1206447

<https://www.phoenixcontact.com/gb/products/1206447>



Screwdriver, PZ crosshead, VDE insulated, size: PZ 0 x 80 mm, 2-component grip, with non-slip grip



# Ground modular terminal block - PTV 6-TWIN-PE



1116739

<https://www.phoenixcontact.com/gb/products/1116739>

## Screwdriver

Screwdriver - SZK PZ1 VDE - 1206450

<https://www.phoenixcontact.com/gb/products/1206450>



Screwdriver, PZ crosshead, VDE insulated, size: PZ 1 x 80 mm, 2-component grip, with non-slip grip

---

## Screwdriver

Screwdriver - SZK PZ2 VDE - 1206463

<https://www.phoenixcontact.com/gb/products/1206463>



Screwdriver, PZ crosshead, VDE insulated, size: PZ 2 x 100 mm, 2-component grip, with non-slip grip

# Ground modular terminal block - PTV 6-TWIN-PE

1116739

<https://www.phoenixcontact.com/gb/products/1116739>

## Screwdriver

Screwdriver - SZS 0,6X3,5 VDE - 1212602

<https://www.phoenixcontact.com/gb/products/1212602>



Screwdriver, slot-headed, VDE insulated, size: 0.6 x 3.5 x 100 mm, 2-component grip, with non-slip grip

---

## Screwdriver

Screwdriver - SZS 0,8X4,0 VDE - 1212508

<https://www.phoenixcontact.com/gb/products/1212508>



Screwdriver, slot-headed, VDE insulated, size: 0.8 x 4.0 x 100 mm, 2-component grip, with non-slip grip

# Ground modular terminal block - PTV 6-TWIN-PE



1116739

<https://www.phoenixcontact.com/gb/products/1116739>

## Screwdriver

Screwdriver - SZS 1,0X4,0 VDE - 1205066

<https://www.phoenixcontact.com/gb/products/1205066>



Screwdriver, slot-headed, VDE insulated, size: 1.0 x 4.0 x 100 mm, 2-component grip, with non-slip grip

---

## Screwdriver

Screwdriver - SZS 1,0X5,5 VDE - 1209114

<https://www.phoenixcontact.com/gb/products/1209114>



Screwdriver, slot-headed, VDE insulated, size: 1.0 x 5.5 x 125 mm, 2-component grip, with non-slip grip

# Ground modular terminal block - PTV 6-TWIN-PE



1116739

<https://www.phoenixcontact.com/gb/products/1116739>

## Screwdriver

Screwdriver - SZS 1,0X6,5 VDE - 1205079

<https://www.phoenixcontact.com/gb/products/1205079>



Screwdriver, slot-headed, VDE insulated, size: 1.0 x 6.5 x 150 mm, 2-component grip, with non-slip grip

---

## Cover segment

Cover segment - DS-PTV 6 - 1182214

<https://www.phoenixcontact.com/gb/products/1182214>



Cover segment, color: gray

# Ground modular terminal block - PTV 6-TWIN-PE

1116739

<https://www.phoenixcontact.com/gb/products/1116739>

## Warning label

Warning label - WS PT 6 - 1029029

<https://www.phoenixcontact.com/gb/products/1029029>



Warning label, yellow/black, labeled: Lightning flash, mounting type: plug in, for terminal block width: 8.2 mm

---

## DIN rail perforated

DIN rail perforated - NS 35/ 7,5 PERF 2000MM - 0801733

<https://www.phoenixcontact.com/gb/products/0801733>



DIN rail perforated, acc. to EN 60715, material: Steel, galvanized, passivated with a thick layer, Standard profile, color: silver, Pack of 25 (50 m)

# Ground modular terminal block - PTV 6-TWIN-PE

1116739

<https://www.phoenixcontact.com/gb/products/1116739>

## DIN rail, unperforated

DIN rail, unperforated - NS 35/ 7,5 UNPERF 2000MM - 0801681

<https://www.phoenixcontact.com/gb/products/0801681>



DIN rail, unperforated, acc. to EN 60715, material: Steel, galvanized, passivated with a thick layer, Standard profile, color: silver, Pack of 25 (50 m)

---

## DIN rail perforated

DIN rail perforated - NS 35/ 7,5 WH PERF 2000MM - 1204119

<https://www.phoenixcontact.com/gb/products/1204119>



DIN rail perforated, acc. to EN 60715, material: Steel, Galvanized, white passivated, Standard profile, color: silver, Pack of 25 (50 m)

# Ground modular terminal block - PTV 6-TWIN-PE

1116739

<https://www.phoenixcontact.com/gb/products/1116739>

## DIN rail, unperforated

DIN rail, unperforated - NS 35/ 7,5 WH UNPERF 2000MM-VPE 10 - 1204122

<https://www.phoenixcontact.com/gb/products/1204122>



DIN rail, unperforated, acc. to EN 60715, material: Steel, Galvanized, white passivated, Standard profile, color: silver, Pack of 10 (20 m)

---

## DIN rail, unperforated

DIN rail, unperforated - NS 35/ 7,5 AL UNPERF 2000MM - 0801704

<https://www.phoenixcontact.com/gb/products/0801704>



DIN rail, unperforated, acc. to EN 60715, material: Aluminum, uncoated, Standard profile, color: silver, Pack of 25 (50 m)

# Ground modular terminal block - PTV 6-TWIN-PE

1116739

<https://www.phoenixcontact.com/gb/products/1116739>

## DIN rail perforated

DIN rail perforated - NS 35/ 7,5 ZN PERF 2000MM - 1206421

<https://www.phoenixcontact.com/gb/products/1206421>



DIN rail perforated, acc. to EN 60715, material: Steel, galvanized, Standard profile, color: silver, Pack of 25 (50 m)

---

## DIN rail, unperforated

DIN rail, unperforated - NS 35/ 7,5 ZN UNPERF 2000MM - 1206434

<https://www.phoenixcontact.com/gb/products/1206434>



DIN rail, unperforated, acc. to EN 60715, material: Steel, galvanized, Standard profile, color: silver, Pack of 25 (50 m)



# Ground modular terminal block - PTV 6-TWIN-PE



1116739

<https://www.phoenixcontact.com/gb/products/1116739>

## DIN rail, unperforated

DIN rail, unperforated - NS 35/ 7,5 CU UNPERF 2000MM-VPE 10 - 0801762

<https://www.phoenixcontact.com/gb/products/0801762>



DIN rail, unperforated, acc. to EN 60715, material: Copper, uncoated, Standard profile, color: copper-colored, Pack of 10 (20 m)

---

## End cap

End cap - NS 35/ 7,5 CAP - 1206560

<https://www.phoenixcontact.com/gb/products/1206560>

DIN rail end piece, for DIN rail NS 35/7.5



# Ground modular terminal block - PTV 6-TWIN-PE

1116739

<https://www.phoenixcontact.com/gb/products/1116739>

## DIN rail perforated

DIN rail perforated - NS 35/15 PERF 2000MM - 1201730

<https://www.phoenixcontact.com/gb/products/1201730>



DIN rail perforated, similar to EN 60715, material: Steel, galvanized, passivated with a thick layer, Standard profile, color: silver, Pack of 25 (50 m)

---

## DIN rail, unperforated

DIN rail, unperforated - NS 35/15 UNPERF 2000MM - 1201714

<https://www.phoenixcontact.com/gb/products/1201714>



DIN rail, unperforated, similar to EN 60715, material: Steel, galvanized, passivated with a thick layer, Standard profile, color: silver, Pack of 25 (50 m)

# Ground modular terminal block - PTV 6-TWIN-PE

1116739

<https://www.phoenixcontact.com/gb/products/1116739>

## DIN rail perforated

DIN rail perforated - NS 35/15 WH PERF 2000MM - 0806602

<https://www.phoenixcontact.com/gb/products/0806602>



DIN rail perforated, similar to EN 60715, material: Steel, Galvanized, white passivated, Standard profile, color: white, Pack of 25 (50 m)

---

## DIN rail, unperforated

DIN rail, unperforated - NS 35/15 WH UNPERF 2000MM-VPE 10 - 1204135

<https://www.phoenixcontact.com/gb/products/1204135>



DIN rail, unperforated, similar to EN 60715, material: Steel, Galvanized, white passivated, Standard profile, color: silver, Pack of 10 (20 m)

# Ground modular terminal block - PTV 6-TWIN-PE



1116739

<https://www.phoenixcontact.com/gb/products/1116739>

## DIN rail, unperforated

DIN rail, unperforated - NS 35/15 AL UNPERF 2000MM - 1201756

<https://www.phoenixcontact.com/gb/products/1201756>



DIN rail, unperforated, similar to EN 60715, material: Aluminum, uncoated, Standard profile, color: silver

---

## DIN rail perforated

DIN rail perforated - NS 35/15 ZN PERF 2000MM - 1206599

<https://www.phoenixcontact.com/gb/products/1206599>



DIN rail perforated, similar to EN 60715, material: Steel, galvanized, Standard profile, color: silver, Pack of 25 (50 m)

# Ground modular terminal block - PTV 6-TWIN-PE

1116739

<https://www.phoenixcontact.com/gb/products/1116739>

## DIN rail, unperforated

DIN rail, unperforated - NS 35/15 ZN UNPERF 2000MM - 1206586

<https://www.phoenixcontact.com/gb/products/1206586>



DIN rail, unperforated, similar to EN 60715, material: Steel, galvanized, Standard profile, color: silver, Pack of 25 (50 m)

---

## DIN rail, unperforated

DIN rail, unperforated - NS 35/15 CU UNPERF 2000MM-VPE 10 - 1201895

<https://www.phoenixcontact.com/gb/products/1201895>



DIN rail, unperforated, similar to EN 60715, material: Copper, uncoated, Standard profile, color: copper-colored, Pack of 10 (20 m)

# Ground modular terminal block - PTV 6-TWIN-PE

1116739

<https://www.phoenixcontact.com/gb/products/1116739>

## End cap

End cap - NS 35/15 CAP - 1206573

<https://www.phoenixcontact.com/gb/products/1206573>

DIN rail end piece, for DIN rail NS 35/15



---

## DIN rail, unperforated

DIN rail, unperforated - NS 35/15-2,3 UNPERF 2000MM-VPE 10 - 1201798

<https://www.phoenixcontact.com/gb/products/1201798>



DIN rail, unperforated, acc. to EN 60715, material: Steel, galvanized, passivated with a thick layer, Standard profile 2.3 mm, color: silver, Pack of 10 (20 m)

# Ground modular terminal block - PTV 6-TWIN-PE



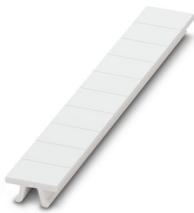
1116739

<https://www.phoenixcontact.com/gb/products/1116739>

## Zack marker strip

Zack marker strip - ZB 8:UNBEDRUCKT - 1052002

<https://www.phoenixcontact.com/gb/products/1052002>



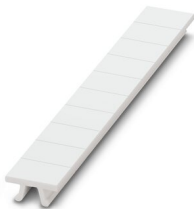
Zack marker strip, Strip, white, unlabeled, can be labeled with: CMS-P1-PLOTTER, PLOTMARK, mounting type: snapped, for terminal block width: 8.2 mm, lettering field size: 10.5 x 8.15 mm, Number of individual labels: 10

---

## Zack marker strip

Zack marker strip - ZB 8 CUS - 0825011

<https://www.phoenixcontact.com/gb/products/0825011>



Zack marker strip, can be ordered: Strip, white, labeled according to customer specifications, mounting type: snap into tall marker groove, for terminal block width: 8.2 mm, lettering field size: 10.5 x 8.15 mm, Number of individual labels: 10

# Ground modular terminal block - PTV 6-TWIN-PE



1116739

<https://www.phoenixcontact.com/gb/products/1116739>

## Marker for terminal blocks

Marker for terminal blocks - UC-TM 8 - 0818072

<https://www.phoenixcontact.com/gb/products/0818072>



Marker for terminal blocks, Sheet, white, unlabeled, can be labeled with: BLUEMARK ID COLOR, BLUEMARK ID, BLUEMARK CLED, PLOTMARK, CMS-P1-PLOTTER, mounting type: snapped, for terminal block width: 8.2 mm, lettering field size: 7.6 x 10.5 mm, Number of individual labels: 56

---

## Marker for terminal blocks

Marker for terminal blocks - UC-TM 8 CUS - 0824597

<https://www.phoenixcontact.com/gb/products/0824597>



Marker for terminal blocks, can be ordered: by sheet, white, labeled according to customer specifications, mounting type: snap into tall marker groove, for terminal block width: 8.2 mm, lettering field size: 7.6 x 10.5 mm, Number of individual labels: 56



# Ground modular terminal block - PTV 6-TWIN-PE



1116739

<https://www.phoenixcontact.com/gb/products/1116739>

## Marker for terminal blocks

Marker for terminal blocks - UCT-TM 8 - 0828740

<https://www.phoenixcontact.com/gb/products/0828740>



Marker for terminal blocks, Sheet, white, unlabeled, can be labeled with: TOPMARK NEO, TOPMARK LASER, BLUEMARK ID COLOR, BLUEMARK ID, BLUEMARK CLED, THERMOMARK PRIME, THERMOMARK CARD 2.0, THERMOMARK CARD, mounting type: snapped, for terminal block width: 8.2 mm, lettering field size: 7.6 x 10.5 mm, Number of individual labels: 42

---

## Marker for terminal blocks

Marker for terminal blocks - UCT-TM 8 CUS - 0829616

<https://www.phoenixcontact.com/gb/products/0829616>



Marker for terminal blocks, can be ordered: by sheet, white, labeled according to customer specifications, mounting type: snap into tall marker groove, for terminal block width: 8.2 mm, lettering field size: 7.6 x 10.5 mm, Number of individual labels: 42

# Ground modular terminal block - PTV 6-TWIN-PE

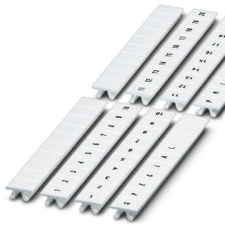
1116739

<https://www.phoenixcontact.com/gb/products/1116739>

## Zack marker strip

Zack marker strip - ZB 8,LGS:FORTL.ZAHLEN - 1052015

<https://www.phoenixcontact.com/gb/products/1052015>



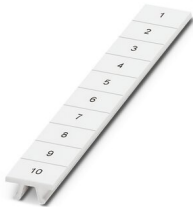
Zack marker strip, Strip, white, labeled, can be labeled with: CMS-P1-PLOTTER, printed horizontally: consecutive numbers 1 ... 10, 11 ... 20, etc. up to 91 ... 100, mounting type: snapped, for terminal block width: 8.2 mm, lettering field size: 10. 5 x 8.15 mm, Number of individual labels: 10

---

## Zack marker strip

Zack marker strip - ZB 8,QR:FORTL.ZAHLEN - 1052028

<https://www.phoenixcontact.com/gb/products/1052028>



Zack marker strip, Strip, white, labeled, can be labeled with: CMS-P1-PLOTTER, Printed vertically: consecutive numbers 1 ... 10, 11 ... 20, etc. up to 91 ... 100, mounting type: snapped, for terminal block width: 8.2 mm, lettering field size: 10. 5 x 8.15 mm, Number of individual labels: 10

# Ground modular terminal block - PTV 6-TWIN-PE

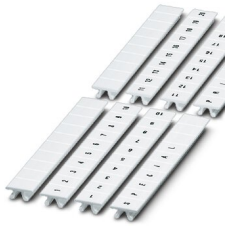
1116739

<https://www.phoenixcontact.com/gb/products/1116739>

## Marker for terminal blocks

Marker for terminal blocks - ZB 8,LGS:L1-N,PE - 1052413

<https://www.phoenixcontact.com/gb/products/1052413>



Marker for terminal blocks, Strip, white, labeled, can be labeled with: CMS-P1-PLOTTER, horizontal: L1, L2, L3, N, PE, L1, L2, L3, N, PE, mounting type: snapped, for terminal block width: 8.2 mm, lettering field size: 10.5 x 8.15 mm, Number of individual labels: 10

---

## Zack Marker strip, flat

Zack Marker strip, flat - ZBF 8:UNBEDRUCKT - 0808781

<https://www.phoenixcontact.com/gb/products/0808781>



Zack Marker strip, flat, Strip, white, unlabeled, can be labeled with: PLOTMARK, CMS-P1-PLOTTER, mounting type: snapped, for terminal block width: 8 mm, lettering field size: 5.15 x 8.15 mm, Number of individual labels: 10

# Ground modular terminal block - PTV 6-TWIN-PE

1116739

<https://www.phoenixcontact.com/gb/products/1116739>

## Zack Marker strip, flat

Zack Marker strip, flat - ZBF 8 CUS - 0825030

<https://www.phoenixcontact.com/gb/products/0825030>



Zack Marker strip, flat, can be ordered: Strip, white, labeled according to customer specifications, mounting type: snap into flat marker groove, for terminal block width: 8 mm, lettering field size: 5.15 x 8.15 mm, Number of individual labels: 10

---

## Zack Marker strip, flat

Zack Marker strip, flat - ZBF 8,LGS:FORTL.ZAHLEN - 0808804

<https://www.phoenixcontact.com/gb/products/0808804>



Zack Marker strip, flat, Strip, white, labeled, printed horizontally: consecutive numbers 1 ... 10, 11 ... 20, etc. up to 101 ... 110, mounting type: snapped, for terminal block width: 8 mm, lettering field size: 5.15 x 8.15 mm, Number of individual labels: 10

# Ground modular terminal block - PTV 6-TWIN-PE



1116739

<https://www.phoenixcontact.com/gb/products/1116739>

## Marker for terminal blocks

Marker for terminal blocks - UC-TMF 8 - 0818137

<https://www.phoenixcontact.com/gb/products/0818137>



Marker for terminal blocks, Sheet, white, unlabeled, can be labeled with: BLUEMARK ID COLOR, BLUEMARK ID, BLUEMARK CLED, PLOTMARK, CMS-P1-PLOTTER, mounting type: snapped, for terminal block width: 8.2 mm, lettering field size: 7.6 x 5.1 mm, Number of individual labels: 56

---

## Marker for terminal blocks

Marker for terminal blocks - UC-TMF 8 CUS - 0824654

<https://www.phoenixcontact.com/gb/products/0824654>



Marker for terminal blocks, can be ordered: by sheet, white, labeled according to customer specifications, mounting type: snap into flat marker groove, for terminal block width: 8.2 mm, lettering field size: 7.6 x 5.1 mm, Number of individual labels: 56

# Ground modular terminal block - PTV 6-TWIN-PE



1116739

<https://www.phoenixcontact.com/gb/products/1116739>

## Marker for terminal blocks

Marker for terminal blocks - UCT-TMF 8 - 0828748

<https://www.phoenixcontact.com/gb/products/0828748>



Marker for terminal blocks, Sheet, white, unlabeled, can be labeled with: TOPMARK NEO, TOPMARK LASER, BLUEMARK ID COLOR, BLUEMARK ID, BLUEMARK CLED, THERMOMARK PRIME, THERMOMARK CARD 2.0, THERMOMARK CARD, mounting type: snapped, for terminal block width: 8.2 mm, lettering field size: 7.4 x 4.7 mm, Number of individual labels: 42

---

## Marker for terminal blocks

Marker for terminal blocks - UCT-TMF 8 CUS - 0829672

<https://www.phoenixcontact.com/gb/products/0829672>



Marker for terminal blocks, can be ordered: by sheet, white, labeled according to customer specifications, mounting type: snap into flat marker groove, for terminal block width: 8.2 mm, lettering field size: 7.4 x 4.7 mm, Number of individual labels: 42

# Ground modular terminal block - PTV 6-TWIN-PE



1116739

<https://www.phoenixcontact.com/gb/products/1116739>

## Test plugs

Test plugs - MPS-MT - 0201744

<https://www.phoenixcontact.com/gb/products/0201744>



Test plugs, with solder connection up to 1 mm<sup>2</sup> conductor cross section, color: gray

---

## Insulating sleeve

Insulating sleeve - MPS-IH WH - 0201663

<https://www.phoenixcontact.com/gb/products/0201663>



Insulating sleeve, color: white

# Ground modular terminal block - PTV 6-TWIN-PE



1116739

<https://www.phoenixcontact.com/gb/products/1116739>

## Insulating sleeve

Insulating sleeve - MPS-IH RD - 0201676

<https://www.phoenixcontact.com/gb/products/0201676>

Insulating sleeve, color: red



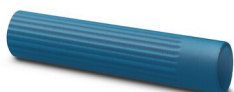
---

## Insulating sleeve

Insulating sleeve - MPS-IH BU - 0201689

<https://www.phoenixcontact.com/gb/products/0201689>

Insulating sleeve, color: blue





# Ground modular terminal block - PTV 6-TWIN-PE



1116739

<https://www.phoenixcontact.com/gb/products/1116739>

## Insulating sleeve

Insulating sleeve - MPS-IH YE - 0201692

<https://www.phoenixcontact.com/gb/products/0201692>

Insulating sleeve, color: yellow



---

## Insulating sleeve

Insulating sleeve - MPS-IH GN - 0201702

<https://www.phoenixcontact.com/gb/products/0201702>

Insulating sleeve, color: green



# Ground modular terminal block - PTV 6-TWIN-PE



1116739

<https://www.phoenixcontact.com/gb/products/1116739>

## Insulating sleeve

Insulating sleeve - MPS-IH GY - 0201728

<https://www.phoenixcontact.com/gb/products/0201728>

Insulating sleeve, color: gray



---

## Insulating sleeve

Insulating sleeve - MPS-IH BK - 0201731

<https://www.phoenixcontact.com/gb/products/0201731>

Insulating sleeve, color: black



# Ground modular terminal block - PTV 6-TWIN-PE



1116739

<https://www.phoenixcontact.com/gb/products/1116739>

## Test adapter

Test adapter - PAI-4-FIX BU - 3032729

<https://www.phoenixcontact.com/gb/products/3032729>



Test adapter, Touch proof against unintentional direct contact according to DIN EN 50274 when plugged in, for 4 mm test plug and terminal blocks with 8.2 mm pitch, color: blue

---

## Test adapter

Test adapter - PAI-4-FIX OG - 3034455

<https://www.phoenixcontact.com/gb/products/3034455>



4 mm test adapter, for terminal blocks with 8.2 mm pitch

# Ground modular terminal block - PTV 6-TWIN-PE



1116739

<https://www.phoenixcontact.com/gb/products/1116739>

## Test adapter

Test adapter - PAI-4-FIX YE - 3032745

<https://www.phoenixcontact.com/gb/products/3032745>



Test adapter, Touch proof against unintentional direct contact according to DIN EN 50274 when plugged in, for 4 mm test plug and terminal blocks with 8.2 mm pitch, color: yellow

---

## Test adapter

Test adapter - PAI-4-FIX RD - 3032732

<https://www.phoenixcontact.com/gb/products/3032732>



Test adapter, Touch proof against unintentional direct contact according to DIN EN 50274 when plugged in, for 4 mm test plug and terminal blocks with 8.2 mm pitch, color: red

# Ground modular terminal block - PTV 6-TWIN-PE



1116739

<https://www.phoenixcontact.com/gb/products/1116739>

## Test adapter

Test adapter - PAI-4-FIX GN - 3032758

<https://www.phoenixcontact.com/gb/products/3032758>



Test adapter, Touch proof against unintentional direct contact according to DIN EN 50274 when plugged in, for 4 mm test plug and terminal blocks with 8.2 mm pitch, color: green

---

## Test adapter

Test adapter - PAI-4-FIX BK - 3032774

<https://www.phoenixcontact.com/gb/products/3032774>



Test adapter, Touch proof against unintentional direct contact according to DIN EN 50274 when plugged in, for 4 mm test plug and terminal blocks with 8.2 mm pitch, color: black

# Ground modular terminal block - PTV 6-TWIN-PE



1116739

<https://www.phoenixcontact.com/gb/products/1116739>

## Test adapter

Test adapter - PAI-4-FIX GY - 3032790

<https://www.phoenixcontact.com/gb/products/3032790>



Test adapter, Touch proof against unintentional direct contact according to DIN EN 50274 when plugged in, for 4 mm test plug and terminal blocks with 8.2 mm pitch, color: gray

---

## Test adapter

Test adapter - PAI-4-FIX VT - 3032761

<https://www.phoenixcontact.com/gb/products/3032761>



Test adapter, Touch proof against unintentional direct contact according to DIN EN 50274 when plugged in, for 4 mm test plug and terminal blocks with 4.2 mm .. 8.2 mm pitch, color: violet

# Ground modular terminal block - PTV 6-TWIN-PE



1116739

<https://www.phoenixcontact.com/gb/products/1116739>

## Test adapter

Test adapter - PAI-4-FIX BN - 3032787

<https://www.phoenixcontact.com/gb/products/3032787>



Test adapter, Touch proof against unintentional direct contact according to DIN EN 50274 when plugged in, for 4 mm test plug and terminal blocks with 8.2 mm pitch, color: brown

---

## Test adapter

Test adapter - PAI-4-FIX WH - 3032797

<https://www.phoenixcontact.com/gb/products/3032797>



4 mm test adapter, for terminal blocks with 8.2 mm pitch

# Ground modular terminal block - PTV 6-TWIN-PE

1116739

<https://www.phoenixcontact.com/gb/products/1116739>

## Test adapter

Test adapter - PAIS-4-FIX GY - 3032791

<https://www.phoenixcontact.com/gb/products/3032791>



Test adapter, Touch proof against unintentional direct contact according to DIN EN 50274 when plugged in, for 4 mm test plug and terminal blocks with 5.2 mm, 6.2 mm, and 8.2 mm pitch, color: gray

---

## Test adapter

Test adapter - PAIS-4-FIX BK - 3032792

<https://www.phoenixcontact.com/gb/products/3032792>



Test adapter, Touch proof against unintentional direct contact according to DIN EN 50274 when plugged in, for 4 mm test plug and terminal blocks with 5.2 mm, 6.2 mm, and 8.2 mm pitch, color: black



# Ground modular terminal block - PTV 6-TWIN-PE



1116739

<https://www.phoenixcontact.com/gb/products/1116739>

## Test adapter

Test adapter - PAIS-4-FIX RD - 3032793

<https://www.phoenixcontact.com/gb/products/3032793>



Test adapter, Do not plug in while the power is connected, for 4 mm test plug and terminal blocks with 5.2 mm, 6.2 mm, and 8.2 mm pitch, color: red

---

## Test adapter

Test adapter - PAIS-4-FIX BU - 3032798

<https://www.phoenixcontact.com/gb/products/3032798>



Test adapter, Touch proof against unintentional direct contact according to DIN EN 50274 when plugged in, for 4 mm test plug and terminal blocks with 5.2 mm, 6.2 mm, and 8.2 mm pitch, color: blue

# Ground modular terminal block - PTV 6-TWIN-PE



1116739

<https://www.phoenixcontact.com/gb/products/1116739>

## Test adapter

Test adapter - PAIS-4-FIX YE - 3032799

<https://www.phoenixcontact.com/gb/products/3032799>



Test adapter, Touch proof against unintentional direct contact according to DIN EN 50274 when plugged in, for 4 mm test plug and terminal blocks with 5.2 mm, 6.2 mm, and 8.2 mm pitch, color: yellow

---

## Test adapter

Test adapter - PAIS-4-FIX GN - 3032801

<https://www.phoenixcontact.com/gb/products/3032801>



Test adapter, Touch proof against unintentional direct contact according to DIN EN 50274 when plugged in, for 4 mm test plug and terminal blocks with 5.2 mm, 6.2 mm, and 8.2 mm pitch, color: green

# Ground modular terminal block - PTV 6-TWIN-PE



1116739

<https://www.phoenixcontact.com/gb/products/1116739>

## Test adapter

Test adapter - PAIS-4-FIX VT - 3032802

<https://www.phoenixcontact.com/gb/products/3032802>



Test adapter, Touch proof against unintentional direct contact according to DIN EN 50274 when plugged in, for 4 mm test plug and terminal blocks with 5.2 mm, 6.2 mm, and 8.2 mm pitch, color: violet

---

## Test plugs

Test plugs - PS-8 - 3031005

<https://www.phoenixcontact.com/gb/products/3031005>



Test plugs, Modular test plug, color: red

# Ground modular terminal block - PTV 6-TWIN-PE

1116739

<https://www.phoenixcontact.com/gb/products/1116739>

## Spacer plate

Spacer plate - DP PS-8 - 3036741

<https://www.phoenixcontact.com/gb/products/3036741>



Spacer plate, length: 22.4 mm, width: 8.2 mm, height: 29 mm, number of positions: 1, color: red

---

## Test plugs

Test plugs - PS-8/2,3MM RD - 3048564

<https://www.phoenixcontact.com/gb/products/3048564>



Test plugs, color: red

# Ground modular terminal block - PTV 6-TWIN-PE



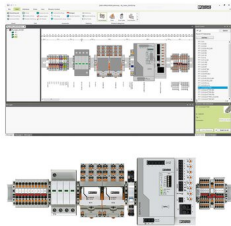
1116739

<https://www.phoenixcontact.com/gb/products/1116739>

## Software

Software - PROJECT COMPLETE - 1050453

<https://www.phoenixcontact.com/gb/products/1050453>



Intuitive planning and marking software for configuring terminal strips and for professional marking of marking materials for terminal blocks, conductors, cables, devices, and systems. The software is available for download

---

## End clamp

End clamp - E/UK - 1201442

<https://www.phoenixcontact.com/gb/products/1201442>



End clamp, material: PA, color: gray, Mounting on a DIN rail NS 32 or NS 35

# Ground modular terminal block - PTV 6-TWIN-PE

1116739

<https://www.phoenixcontact.com/gb/products/1116739>

## End clamp

End clamp - E/UK 1 - 1201413

<https://www.phoenixcontact.com/gb/products/1201413>



End clamps, for supporting the ends of double-level and three-level terminal blocks, width: 10 mm, color: gray

---

## End clamp

End clamp - CLIPFIX 35 - 3022218

<https://www.phoenixcontact.com/gb/products/3022218>



Quick mounting end clamp for NS 35/7,5 DIN rail or NS 35/15 DIN rail, with marking option, width: 9.5 mm, color: gray

# Ground modular terminal block - PTV 6-TWIN-PE

1116739

<https://www.phoenixcontact.com/gb/products/1116739>

## End clamp

End clamp - CLIPFIX 35-5 - 3022276

<https://www.phoenixcontact.com/gb/products/3022276>



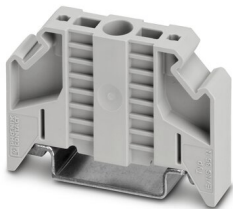
Quick mounting end clamp for NS 35/7,5 DIN rail or NS 35/15 DIN rail, with marking option, with parking option for FBS...5, FBS...6, KSS 5, KSS 6, width: 5.15 mm, color: gray

---

## End clamp

End clamp - E/NS 35 N - 0800886

<https://www.phoenixcontact.com/gb/products/0800886>



End clamp, width: 9.5 mm, color: gray

---

Phoenix Contact 2022 © - all rights reserved  
<https://www.phoenixcontact.com>

PHOENIX CONTACT Ltd  
Halesfield 13, Telford  
Shropshire, TF7 4PG  
01952 681700  
[info@phoenixcontact.co.uk](mailto:info@phoenixcontact.co.uk)