

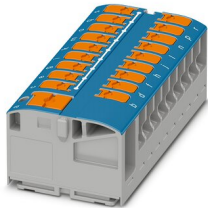
# Distribution block - PTVFIX 6/18X2,5 BU



1019614

<https://www.phoenixcontact.com/gb/products/1019614>

Please be informed that the data shown in this PDF document is generated from our Online Catalog. Please find the complete data in the user documentation. Our General Terms of Use for Downloads are valid.



Distribution block, nom. voltage: 450 V, nominal current: 24 A, connection method: Push-in connection, Load contact, Rated cross section: 2.5 mm<sup>2</sup>, cross section: 0.14 mm<sup>2</sup> - 4 mm<sup>2</sup>, Line contact, Rated cross section: 6 mm<sup>2</sup>, cross section: 0.5 mm<sup>2</sup> - 10 mm<sup>2</sup>, mounting type: for snapping onto a DIN rail adapter, Direct mounting with flange, Free-hanging, color: blue

## Your advantages

- Flexible use, thanks to DIN rail mounting, direct mounting or adhesive mounting
- Clear wiring, thanks to eleven different color variants
- Time-saving conductor connection, thanks to tool-free Push-in direct connection technology
- Time savings of up to 80 %, thanks to ready-to-mount blocks without manual bridging
- Space savings of up to 50 % on the DIN rail, thanks to transverse mounting

## Commercial Data

|                                      |               |
|--------------------------------------|---------------|
| Item number                          | 1019614       |
| Packing unit                         | 10 pc         |
| Minimum order quantity               | 10 pc         |
| Sales Key                            | BEA224        |
| Product Key                          | BEA224        |
| GTIN                                 | 4055626506944 |
| Weight per Piece (including packing) | 34.64 g       |
| Weight per Piece (excluding packing) | 34.64 g       |
| Customs tariff number                | 85369010      |
| Country of origin                    | PL            |

## Technical Data

### Product properties

|                       |                            |
|-----------------------|----------------------------|
| Product type          | Distributor terminal block |
| Number of positions   | 1                          |
| Number of connections | 19                         |
| Number of rows        | 1                          |

### Insulation characteristics

|                      |     |
|----------------------|-----|
| Overvoltage category | III |
| Degree of pollution  | 3   |

### Electrical properties

|   |        |
|---|--------|
| Rated surge voltage                             | 8 kV   |
| Maximum power dissipation for nominal condition | 0.77 W |

### Connection data

|                                 |                     |
|---------------------------------|---------------------|
| Service Entrance                | yes                 |
| Number of connections per level | 19                  |
| Nominal cross section           | 2.5 mm <sup>2</sup> |

### Load contact

|   |  |
|---|--|
| Stripping length  | 8 mm ... 10 mm   |
| Internal cylindrical gage   | A3   |
|   | B3   |
| Connection in acc. with standard  | IEC 60998-2-2  |
| Conductor cross section solid   | 0.14 mm <sup>2</sup> ... 4 mm <sup>2</sup>             |
| Cross section AWG   | 26 ... 12 (converted acc. to IEC)                      |
| Conductor cross section flexible  | 0.14 mm <sup>2</sup> ... 2.5 mm <sup>2</sup>           |
| Conductor cross section, flexible [AWG]   | 26 ... 14 (converted acc. to IEC)                      |
| Flexible conductor cross section flexible (ferrule, w/o plastic sleeve)   | 0.14 mm <sup>2</sup> ... 2.5 mm <sup>2</sup>           |
| Flexible conductor cross section (ferrule with plastic sleeve)  | 0.14 mm <sup>2</sup> ... 2.5 mm <sup>2</sup>           |
| Conductor cross-section flexible (2 conductors with the same cross-section, with TWIN ferrule and plastic sleeve) | 0.5 mm <sup>2</sup>                                    |
| Nominal current   | 24 A   |
| Maximum load current  | 32 A (with 4 mm <sup>2</sup> conductor cross section)  |
| Maximum total current   | 57 A (with 10 mm <sup>2</sup> conductor cross section) |
| Nominal voltage   | 450 V  |
| Nominal cross section   | 2.5 mm <sup>2</sup>                                    |

### Line contact

|                           |                 |
|---------------------------|-----------------|
| Stripping length          | 10 mm ... 12 mm |
| Internal cylindrical gage | A5              |
|                           | B4              |

# Distribution block - PTVFIX 6/18X2,5 BU



1019614

<https://www.phoenixcontact.com/gb/products/1019614>

|   |  |
|---|--|
| Conductor cross section solid   | 0.5 mm <sup>2</sup> ... 10 mm <sup>2</sup>             |
| Cross section AWG   | 20 ... 8 (converted acc. to IEC)                       |
| Conductor cross section flexible  | 0.5 mm <sup>2</sup> ... 6 mm <sup>2</sup>              |
| Conductor cross section, flexible [AWG]   | 20 ... 10 (converted acc. to IEC)                      |
| Flexible conductor cross section flexible (ferrule, w/o plastic sleeve)   | 0.5 mm <sup>2</sup> ... 6 mm <sup>2</sup>              |
| Flexible conductor cross section (ferrule with plastic sleeve)  | 0.5 mm <sup>2</sup> ... 6 mm <sup>2</sup>              |
| Conductor cross-section flexible (2 conductors with the same cross-section, with TWIN ferrule and plastic sleeve) | 0.5 mm <sup>2</sup> ... 1.5 mm <sup>2</sup>            |
| Nominal current   | 41 A (with 6 mm <sup>2</sup> conductor cross section)  |
| Maximum load current  | 57 A (with 10 mm <sup>2</sup> conductor cross section) |
| Nominal cross section   | 6 mm <sup>2</sup>                                      |

## Load contact Connection cross sections directly pluggable

|   |  |
|---|--|
| Conductor cross section solid   | 0.34 mm <sup>2</sup> ... 4 mm <sup>2</sup>   |
| Conductor cross section, solid [AWG]                                    | 22 ... 18 (converted acc. to IEC)            |
| Flexible conductor cross section flexible (ferrule, w/o plastic sleeve) | 0.5 mm <sup>2</sup> ... 2.5 mm <sup>2</sup>  |
| Flexible conductor cross section (ferrule with plastic sleeve)          | 0.34 mm <sup>2</sup> ... 2.5 mm <sup>2</sup> |

## Line contact Connection cross sections directly pluggable

|   |  |
|---|--|
| Conductor cross section solid   | 1 mm <sup>2</sup> ... 10 mm <sup>2</sup> |
| Conductor cross section, solid [AWG]                                    | 18 ... 8 (converted acc. to IEC)         |
| Flexible conductor cross section flexible (ferrule, w/o plastic sleeve) | 1 mm <sup>2</sup> ... 6 mm <sup>2</sup>  |
| Flexible conductor cross section (ferrule with plastic sleeve)          | 1 mm <sup>2</sup> ... 6 mm <sup>2</sup>  |

## Dimensions

|        |         |
|--------|---------|
| Width  | 56.9 mm |
| Height | 21.7 mm |
| Length | 28.6 mm |

## Material specifications

|   |        |
|---|--------|
| Color   | blue   |
| Flammability rating according to UL 94                                  | V0     |
| Insulating material group   | I      |
| Insulating material   | PA     |
| Static insulating material application in cold                          | -60 °C |
| Temperature index of insulation material (DIN EN 60216-1 (VDE 0304-21)) | 125 °C |
| Relative insulation material temperature index (Elec., UL 746 B)        | 130 °C |

## Mechanical properties

### Mechanical data

|                 |    |
|-----------------|----|
| Open side panel | No |
|-----------------|----|

# Distribution block - PTVFIX 6/18X2,5 BU



1019614

<https://www.phoenixcontact.com/gb/products/1019614>

## Environmental and real-life conditions

### Ambient conditions

|  |   |
|--|---|
| Ambient temperature (operation)          | -60 °C ... 105 °C (max. short-term operating temperature RTI Elec.)       |
| Ambient temperature (storage/transport)  | -25 °C ... 60 °C (for a short time, not exceeding 24 h, -60 °C to +70 °C) |
| Ambient temperature (assembly)           | -5 °C ... 70 °C   |
| Ambient temperature (actuation)          | -5 °C ... 70 °C   |
| Permissible humidity (storage/transport) | 30 % ... 70 %   |

## Standards and regulations

|                                  |               |
|----------------------------------|---------------|
| Connection in acc. with standard | IEC 60998-2-2 |
|----------------------------------|---------------|

## Mounting

|               |                                      |
|---------------|--------------------------------------|
| Mounting type | for snapping onto a DIN rail adapter |
|               | Direct mounting with flange          |
|               | Free-hanging                         |

# Distribution block - PTVFIX 6/18X2,5 BU

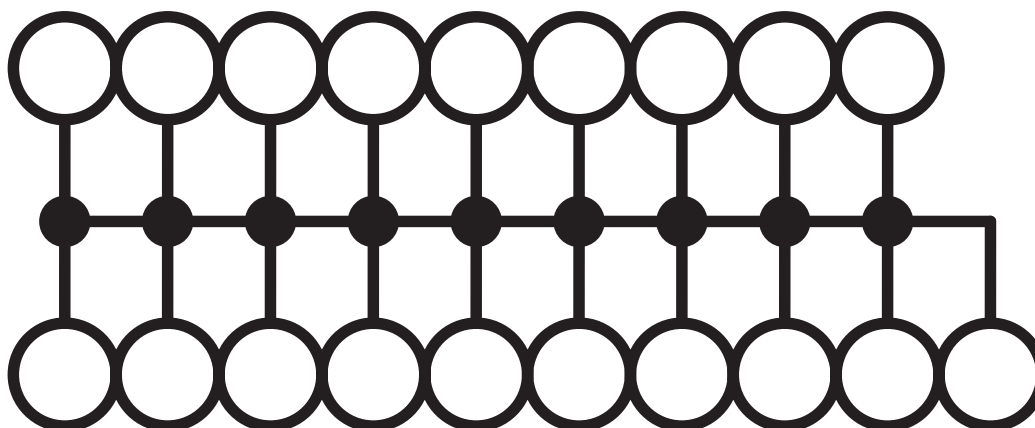


1019614

<https://www.phoenixcontact.com/gb/products/1019614>

## Drawings

Circuit diagram



# Distribution block - PTVFIX 6/18X2,5 BU



1019614

<https://www.phoenixcontact.com/gb/products/1019614>

## Approvals

 **CSA**  
Approval ID: 158887

 **cULus Recognized**  
Approval ID: E60425

# Distribution block - PTVFIX 6/18X2,5 BU



1019614

<https://www.phoenixcontact.com/gb/products/1019614>

## Classifications

### ECLASS

ECLASS-11.0

27141120

### ETIM

ETIM 8.0

EC000897

### UNSPSC

UNSPSC 21.0

39121400

# Distribution block - PTVFIX 6/18X2,5 BU



1019614

<https://www.phoenixcontact.com/gb/products/1019614>

## Environmental Product Compliance

|            |   |
|------------|---|
| China RoHS | Environmentally friendly use period: unlimited = EFUP-e |
|            | No hazardous substances above threshold values          |



# Distribution block - PTVFIX 6/18X2,5 BU

1019614

<https://www.phoenixcontact.com/gb/products/1019614>

## Accessories

### Plug-in bridge

Plug-in bridge - FBS 2-5 - 3030161

<https://www.phoenixcontact.com/gb/products/3030161>



Plug-in bridge, pitch: 5.2 mm, color: red

---

### Plug-in bridge

Plug-in bridge - FBS 2-5 GN - 3032143

<https://www.phoenixcontact.com/gb/products/3032143>



Plug-in bridge, pitch: 5.2 mm, color: green

# Distribution block - PTVFIX 6/18X2,5 BU

1019614

<https://www.phoenixcontact.com/gb/products/1019614>

## Plug-in bridge

Plug-in bridge - FBS 2-5 BU - 3036877

<https://www.phoenixcontact.com/gb/products/3036877>



Plug-in bridge, pitch: 5.2 mm, color: blue

---

## Plug-in bridge

Plug-in bridge - FBS 2-5 GY - 3038969

<https://www.phoenixcontact.com/gb/products/3038969>



Plug-in bridge, pitch: 5.2 mm, color: gray

# Distribution block - PTVFIX 6/18X2,5 BU

1019614

<https://www.phoenixcontact.com/gb/products/1019614>

## DIN rail adapter

DIN rail adapter - PTFIX-NS35 - 3274054

<https://www.phoenixcontact.com/gb/products/3274054>

DIN rail adapter, length: 58.1 mm, width: 28.6 mm, height: 11 mm, color: gray



---

## DIN rail adapter

DIN rail adapter - PTFIX-NS35A - 3274056

<https://www.phoenixcontact.com/gb/products/3274056>

DIN rail adapter, length: 45.7 mm, width: 10.3 mm, height: 11.9 mm, color: gray



# Distribution block - PTVFIX 6/18X2,5 BU

1019614

<https://www.phoenixcontact.com/gb/products/1019614>

## DIN rail adapter

DIN rail adapter - PTFIX-NS35A-FIX - 3274057

<https://www.phoenixcontact.com/gb/products/3274057>

DIN rail adapter, with end stop function, length: 45.7 mm, width: 10.3 mm, height: 12 mm, color: gray



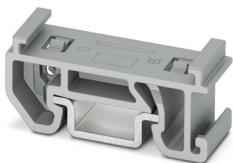
---

## DIN rail adapter

DIN rail adapter - PTFIX-NS15A - 3274058

<https://www.phoenixcontact.com/gb/products/3274058>

DIN rail adapter, length: 28.6 mm, width: 10.3 mm, height: 10.8 mm, color: gray



# Distribution block - PTVFIX 6/18X2,5 BU

1019614

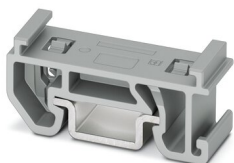
<https://www.phoenixcontact.com/gb/products/1019614>

## DIN rail adapter

DIN rail adapter - PTFIX-NS15A-FIX - 3274059

<https://www.phoenixcontact.com/gb/products/3274059>

DIN rail adapter, with end stop function, length: 28.6 mm, width: 10.3 mm, height: 10.8 mm, color: gray



---

## Flange

Flange - PTFIX-F - 3274060

<https://www.phoenixcontact.com/gb/products/3274060>

Flange, with screw-on fixing, length: 28.6 mm, width: 8.6 mm, height: 21.7 mm, color: gray



# Distribution block - PTVFIX 6/18X2,5 BU

1019614

<https://www.phoenixcontact.com/gb/products/1019614>

## Marking foil for zack marker strip

Marking foil for zack marker strip - TML (EX3,8)R - 0801837

<https://www.phoenixcontact.com/gb/products/0801837>



Marking foil for zack marker strip, Roll, white, unlabeled, can be labeled with: THERMOMARK ROLL 2.0, THERMOMARK ROLL, THERMOMARK ROLL X1, THERMOMARK ROLLMASTER 300/600, THERMOMARK X1.2, mounting type: adhesive, for terminal block width: 30000 mm, lettering field size: 30000 x 3.8 mm, Number of individual labels: 1

---

## Marking foil for zack marker strip

Marking foil for zack marker strip - TML (104X3,8)R - 0801833

<https://www.phoenixcontact.com/gb/products/0801833>



Marking foil for zack marker strip, Roll, white, unlabeled, can be labeled with: THERMOMARK ROLL 2.0, THERMOMARK ROLL, THERMOMARK ROLL X1, THERMOMARK ROLLMASTER 300/600, THERMOMARK X1.2, mounting type: adhesive, for terminal block width: 104 mm, lettering field size: 104 x 3.8 mm, Number of individual labels: 2500

# Distribution block - PTVFIX 6/18X2,5 BU

1019614

<https://www.phoenixcontact.com/gb/products/1019614>

## Marking foil for zack marker strip

Marking foil for zack marker strip - TML (104X2,8)R - 0801832

<https://www.phoenixcontact.com/gb/products/0801832>



Marking foil for zack marker strip, Roll, white, unlabeled, can be labeled with: THERMOMARK ROLL 2.0, THERMOMARK ROLL, THERMOMARK ROLL X1, THERMOMARK ROLLMASTER 300/600, THERMOMARK X1.2, mounting type: adhesive, for terminal block width: 104 mm, lettering field size: 104 x 2.8 mm, Number of individual labels: 2500

---

## Marking foil for zack marker strip

Marking foil for zack marker strip - TML (EX2,8)R - 0801836

<https://www.phoenixcontact.com/gb/products/0801836>



Marking foil for zack marker strip, Roll, white, unlabeled, can be labeled with: THERMOMARK ROLL 2.0, THERMOMARK ROLL, THERMOMARK ROLL X1, THERMOMARK ROLLMASTER 300/600, THERMOMARK X1.2, mounting type: adhesive, for terminal block width: 30000 mm, lettering field size: 30000 x 2.8 mm, Number of individual labels: 1

# Distribution block - PTVFIX 6/18X2,5 BU

1019614

<https://www.phoenixcontact.com/gb/products/1019614>

## Marker card

Marker card - SK 2,8 REEL P5,2 WH CUS - 8199986

<https://www.phoenixcontact.com/gb/products/8199986>



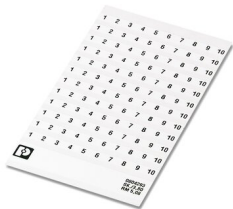
Marker card, can be ordered: by card, white, labeled according to customer specifications, mounting type: adhesive, for terminal block width: 5.2 mm, lettering field size: continuous x 2.8 mm

---

## Marker card

Marker card - SK 3,8 REEL P5,2 WH CUS - 8199989

<https://www.phoenixcontact.com/gb/products/8199989>



Marker card, can be ordered: by card, white, labeled according to customer specifications, mounting type: adhesive, for terminal block width: 5.2 mm, lettering field size: continuous x 3.8 mm



# Distribution block - PTVFIX 6/18X2,5 BU

1019614

<https://www.phoenixcontact.com/gb/products/1019614>

## Marker for terminal blocks

Marker for terminal blocks - US-TML (104X3,8) - 0830768

<https://www.phoenixcontact.com/gb/products/0830768>



Marker for terminal blocks, Card, white, unlabeled, can be labeled with: BLUEMARK ID COLOR, BLUEMARK ID, THERMOMARK PRIME, THERMOMARK CARD 2.0, THERMOMARK CARD, mounting type: adhesive, lettering field size: 104 x 3.8 mm, Number of individual labels: 22

---

## Marker for terminal blocks

Marker for terminal blocks - US-TML (104X2,8) - 0830767

<https://www.phoenixcontact.com/gb/products/0830767>



Marker for terminal blocks, Card, white, unlabeled, can be labeled with: BLUEMARK ID COLOR, BLUEMARK ID, THERMOMARK PRIME, THERMOMARK CARD 2.0, THERMOMARK CARD, mounting type: adhesive, lettering field size: 104 x 2.8 mm, Number of individual labels: 26

# Distribution block - PTVFIX 6/18X2,5 BU



1019614

<https://www.phoenixcontact.com/gb/products/1019614>

## Marker card

Marker card - SK U/3,8 WH:UNBEDRUCKT - 0803906

<https://www.phoenixcontact.com/gb/products/0803906>



Marker card, Sheet, white, unlabeled, can be labeled with: PLOTMARK, CMS-P1-PLOTTER, Office printing systems, mounting type: adhesive, for terminal block width: 210 mm, lettering field size: 186 x 3.8 mm, Number of individual labels: 1440

---

## Marker card

Marker card - SK U/2,8 WH:UNBEDRUCKT - 0803883

<https://www.phoenixcontact.com/gb/products/0803883>



Marker card, Sheet, white, unlabeled, can be labeled with: PLOTMARK, CMS-P1-PLOTTER, Office printing systems, mounting type: adhesive, for terminal block width: 210 mm, lettering field size: 186 x 2.8 mm, Number of individual labels: 3600

# Distribution block - PTVFIX 6/18X2,5 BU



1019614

<https://www.phoenixcontact.com/gb/products/1019614>

## Label

Label - MM-TML (EX3,8)R C1 WH/BK - 1092026

<https://www.phoenixcontact.com/gb/products/1092026>



Label, Roll, white, unlabeled, can be labeled with: THERMOFOX, THERMOMARK GO, THERMOMARK GO.K, mounting type: adhesive, for terminal block width: 8000 mm, lettering field size: continuous x 2.8 mm

---

Phoenix Contact 2022 © - all rights reserved

<https://www.phoenixcontact.com>

PHOENIX CONTACT Ltd

Halesfield 13, Telford

Shropshire, TF7 4PG

01952 681700

[info@phoenixcontact.co.uk](mailto:info@phoenixcontact.co.uk)