
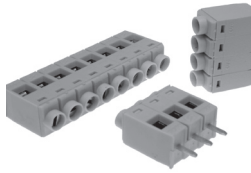


# PCB TERMINAL BLOCKS

## 5mm Pitch 36 Pole Rising Clamp Terminal

- Unique 36 pole strip
- Easily cut to required number of poles
- Can be supplied pre-cut
- Anti solder wicking
- Moulded in grey UL94-V0 flame retardant PC
- Professional rising clamp terminals
- 0.2-4.0mm<sup>2</sup> (30-12AWG) solid cable
- 0.2-2.5mm<sup>2</sup> (30-12AWG) stranded cable
- Guided pin alignment
- Captive screw
-  approved

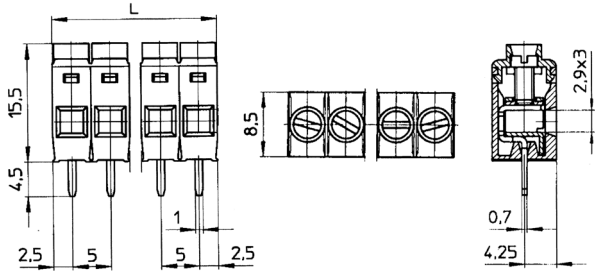
CTB7000




TYPE NO.	POLES	LENGTH
CTB7000/11	11	5mm
CTB7000/22	22	10mm
CTB7000/33	33	15mm
CTB7000/44	44	20mm
CTB7000/55	55	25mm
CTB7000/66	66	30mm
CTB7000/77	77	35mm
CTB7000/88	88	40mm
CTB7000/99	99	45mm
CTB7000/100	100	50mm
CTB7000/111	111	55mm
CTB7000/122	122	60mm
CTB7000/188	188	90mm
CTB7000/366	366	180mm

### SPECIFICATION

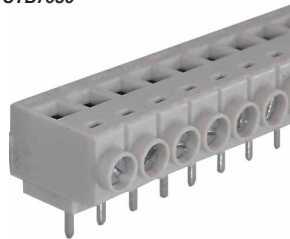
Rating	22A/250V UL=16A/300V, VDE&IMQ=22A/450V
Dielectric strength	≥3kV
Impulse withstand voltage	4kV
Working temperature	85°C
Moulding	UL94-V0 flame retardant PC
Pin/terminal	Tinned, nickel plated brass
Wire clamp	Nickel plated brass
Screw/torque	M2.5 steel zinc plated, 0.4Nm
Recommended PCB hole size	ø1.3mm



## 5mm Pitch 36 Pole 90° Rising Clamp Terminal

- Unique 36 pole strip
- Easily cut to required number of poles
- Can be supplied pre-cut
- Anti solder wicking
- Moulded in grey UL94-V0 flame retardant PC
- Professional rising clamp terminals
- 0.2-4.0mm<sup>2</sup> (30-12AWG) solid cable
- 0.2-2.5mm<sup>2</sup> (30-12AWG) stranded cable
- Guided pin alignment
- Captive screw
-  approved

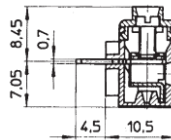
CTB7050



TYPE NO.	POLES	LENGTH
CTB7050/1	1	5mm
CTB7050/2	2	10mm
CTB7050/3	3	15mm
CTB7050/4	4	20mm
CTB7050/5	5	25mm
CTB7050/6	6	30mm
CTB7050/7	7	35mm
CTB7050/8	8	40mm
CTB7050/9	9	45mm
CTB7050/10	10	50mm
CTB7050/11	11	55mm
CTB7050/12	12	60mm
CTB7050/18	18	90mm
CTB7050/36	36	180mm

### SPECIFICATION

Rating	22A/250V UL=16A/300V, VDE&IMQ=22A/450V
Dielectric strength	≥3kV
Impulse withstand voltage	4kV
Working temperature	85°C
Moulding	UL94-V0 flame retardant PC
Pin/terminal	Tinned, nickel plated brass
Wire clamp	Nickel plated brass
Screw/torque	M2.5 steel zinc plated, 0.4Nm
Recommended PCB hole size	ø1.3mm



For other dimensions see CTB7000