

LM431SA / LM431SB / LM431SC

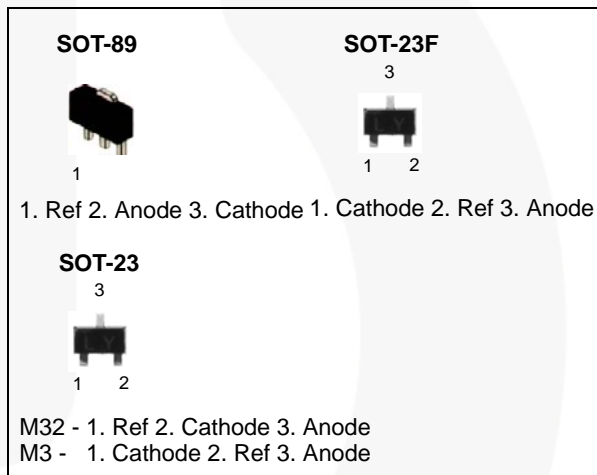
Programmable Shunt Regulator

Features

- Programmable Output Voltage to 36 V
- Low Dynamic Output Impedance: 0.2 Ω (Typical)
- Sink Current Capability of 1.0 to 100 mA
- Equivalent Full-Range Temperature Coefficient of 50 ppm/°C(Typical)
- Temperature Compensated for Operation Over Full Rated Operating Temperature Range
- Low Output Noise Voltage
- Fast Turn-on Response

Description

The LM431SA / LM431SB / LM431SC are three-terminal the output adjustable regulators with thermal stability over operating temperature range. The output voltage can be set any value between V_{REF} (approximately 2.5 V) and 36 V with two external resistors. These devices have a typical dynamic output impedance of 0.2 Ω. Active output circuit provides a sharp turn-on characteristic, making these devices excellent replacement for Zener diodes in many applications.



Ordering Information

| Product Number | Output Voltage Tolerance | Operating Temperature | Top Mark | Package | Packing Method | |
|----------------|--------------------------|-----------------------|--------------|------------|----------------|-----------|
| LM431SACMFX | 2% | -25 to +85°C | 43A | SOT-23F 3L | Tape and Reel | |
| LM431SACM3X | | | 43L | SOT-23 3L | | |
| LM431SACM32X | | | 43G | SOT-23 3L | | |
| LM431SBCMLX | 1% | | 43B | SOT-89 3L | | |
| LM431SBCMFX | | | 43B | SOT-23F 3L | | |
| LM431SBCM3X | | | 43M | SOT-23 3L | | |
| LM431SBCM32X | 0.5% | | 43H | SOT-23 3L | | |
| LM431SCCMLX | | | 43C | SOT-89 3L | | |
| LM431SCCMFX | | | 43C | SOT-23F 3L | | |
| LM431SCCM3X | | | 43N | SOT-23 3L | | |
| LM431SCCM32X | 2% | | -40 to +85°C | 43J | | SOT-23 3L |
| LM431SAIMFX | | | 43AI | SOT-23F 3L | | |

Block Diagram

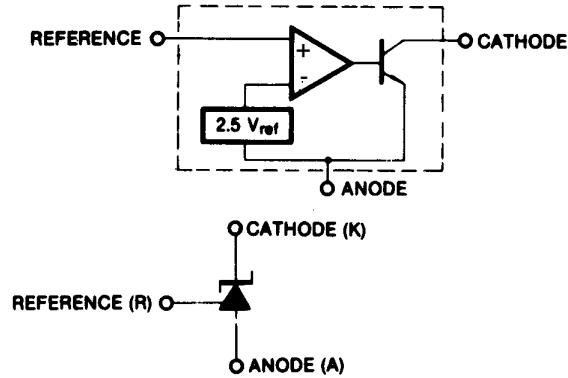


Figure 1. Block Diagram

Absolute Maximum Ratings

Stresses exceeding the absolute maximum ratings may damage the device. The device may not function or be operable above the recommended operating conditions and stressing the parts to these levels is not recommended. In addition, extended exposure to stresses above the recommended operating conditions may affect device reliability. The absolute maximum ratings are stress ratings only. Values are at $T_A = 25^\circ\text{C}$ unless otherwise noted.

| Symbol | Parameter | | Value | Unit |
|-----------------|--|---------------------------------|-----------------|---------------------------|
| V_{KA} | Cathode Voltage | | 37 | V |
| I_{KA} | Cathode current Range (Continuous) | | -100 to +150 | mA |
| I_{REF} | Reference Input Current Range | | -0.05 to +10.00 | mA |
| $R_{\theta JA}$ | Thermal Resistance Junction-Air ^(1,2) | ML Suffix Package (SOT-89) | 220 | $^\circ\text{C}/\text{W}$ |
| | | MF Suffix Package (SOT-23F) | 350 | |
| | | M32, M3 Suffix Package (SOT-23) | 400 | |
| P_D | Power Dissipation ^(3,4) | ML Suffix Package (SOT-89) | 560 | mW |
| | | MF Suffix Package (SOT-23F) | 350 | |
| | | M32, M3 Suffix Package (SOT-23) | 310 | |
| T_J | Junction Temperature | | 150 | $^\circ\text{C}$ |
| T_{OPR} | Operating Temperature Range | All products except LM431SAIMFX | -25 to +85 | $^\circ\text{C}$ |
| | | LM431SAIMFX | -40 to +85 | |
| T_{STG} | Storage Temperature Range | | -65 to +150 | $^\circ\text{C}$ |

Notes:

- Thermal resistance test board
Size: 1.6 mm x 76.2 mm x 114.3 mm (1S0P)
JEDEC Standard: JESD51-3, JESD51-7.
- Assume no ambient airflow.
- $T_{JMAX} = 150^\circ\text{C}$; ratings apply to ambient temperature at 25°C .
- Power dissipation calculation: $P_D = (T_J - T_A) / R_{\theta JA}$.

Recommended Operating Conditions

| Symbol | Parameter | Min. | Max. | Unit |
|----------|-----------------|-----------|------|------|
| V_{KA} | Cathode Voltage | V_{REF} | 36 | V |
| I_{KA} | Cathode Current | 1 | 100 | mA |

Electrical Characteristics

Values are at $T_A = 25^\circ\text{C}$ unless otherwise noted.

| Symbol | Parameter | Conditions | LM431SA | | | LM431SB | | | LM431SC | | | Unit |
|----------------------------------|---|---|---|-------|-------|---------|-------|-------|---------|-------|-------|---------------|
| | | | Min. | Typ. | Max. | Min. | Typ. | Max. | Min. | Typ. | Max. | |
| V_{REF} | Reference Input Voltage | $V_{KA} = V_{REF}$, $I_{KA} = 10\text{ mA}$ | 2.450 | 2.500 | 2.550 | 2.470 | 2.495 | 2.520 | 2.482 | 2.495 | 2.508 | V |
| $\Delta V_{REF} / \Delta T$ | Deviation of Reference Input Voltage Over-Temperature | $V_{KA} = V_{REF}$, $I_{KA} = 10\text{ mA}$ $T_{MIN} \leq T_A \leq T_{MAX}$ | SOT-89 SOT-23F | 4.5 | 17.0 | | 4.5 | 17.0 | | 4.5 | 17.0 | mV |
| | | | SOT-23 | 6.6 | 24 | | 6.6 | 24 | | 6.6 | 24 | mV |
| $\Delta V_{REF} / \Delta V_{KA}$ | Ratio of Change in Reference Input Voltage to the Change in Cathode Voltage | $I_{KA} = 10\text{ mA}$ | $\Delta V_{KA} = 10\text{ V} - V_{REF}$ | -1.0 | -2.7 | | -1.0 | -2.7 | | -1.0 | -2.7 | mV/V |
| | | | $\Delta V_{KA} = 36\text{ V} - 10\text{ V}$ | -0.5 | -2.0 | | -0.5 | -2.0 | | -0.5 | -2.0 | |
| I_{REF} | Reference Input Current | $I_{KA} = 10\text{ mA}$, $R_1 = 10\text{ K}\Omega$, $R_2 = \infty$ | | 1.5 | 4.0 | | 1.5 | 4.0 | | 1.5 | 4.0 | μA |
| $\Delta I_{REF} / \Delta T$ | Deviation of Reference Input Current Over Full Temperature Range | $I_{KA} = 10\text{ mA}$, $R_1 = 10\text{ K}\Omega$, $R_2 = \infty$, $T_A = \text{Full Range}$ | SOT-89 SOT-23F | 0.4 | 1.2 | | 0.4 | 1.2 | | 0.4 | 1.2 | μA |
| | | | SOT-23 | 0.8 | 2.0 | | 0.8 | 2.0 | | 0.8 | 2.0 | μA |
| $I_{KA(MIN)}$ | Minimum Cathode Current for Regulation | $V_{KA} = V_{REF}$ | | 0.45 | 1.00 | | 0.45 | 1.00 | | 0.45 | 1.00 | mA |
| $I_{KA(OFF)}$ | Off -Stage Cathode Current | $V_{KA} = 36\text{ V}$, $V_{REF} = 0$ | | 0.05 | 1.00 | | 0.05 | 1.00 | | 0.05 | 1.00 | μA |
| Z_{KA} | Dynamic Impedance | $V_{KA} = V_{REF}$, $I_{KA} = 1\text{ to }100\text{ mA}$, $f \geq 1.0\text{ kHz}$ | | 0.15 | 0.50 | | 0.15 | 0.50 | | 0.15 | 0.50 | Ω |

Note:

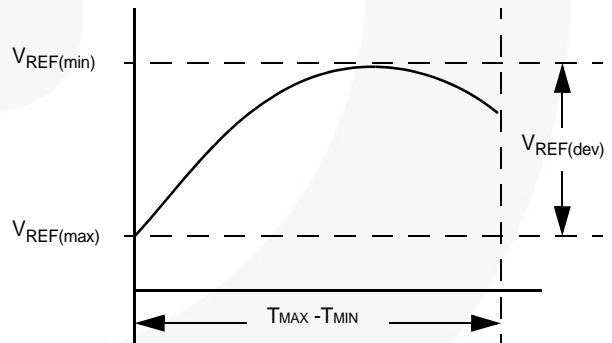
5. $T_{MIN} = -25^\circ\text{C}$, $T_{MAX} = +85^\circ\text{C}$.

Electrical Characteristics^(6, 7) (Continued)Values are at $T_A = 25^\circ\text{C}$ unless otherwise noted.

| Symbol | Parameter | Conditions | LM431SAI | | | Unit |
|--------------------------------|---|---|---|-------|-------|---------------|
| | | | Min. | Typ. | Max. | |
| V_{REF} | Reference Input Voltage | $V_{KA} = V_{REF}$, $I_{KA} = 10\text{ mA}$ | 2.450 | 2.500 | 2.550 | V |
| $V_{REF(dev)}$ | Deviation of Reference Input Voltage Over-Temperature | $V_{KA} = V_{REF}$, $I_{KA} = 10\text{ mA}$, $T_{MIN} \leq T_A \leq T_{MAX}$ | | 5 | 20 | mV |
| $\Delta V_{REF}/\Delta V_{KA}$ | Ratio of Change in Reference Input Voltage to Change in Cathode Voltage | $I_{KA} = 10\text{ mA}$ | $\Delta V_{KA} = 10\text{ V} - V_{REF}$ | -1.0 | -2.7 | mV/V |
| | | | $\Delta V_{KA} = 36\text{ V} - 10\text{ V}$ | -0.5 | -2.0 | |
| I_{REF} | Reference Input Current | $I_{KA} = 10\text{ mA}$, $R_1 = 10\text{ K}\Omega$, $R_2 = \infty$ | | 1.5 | 4.0 | μA |
| $I_{REF(dev)}$ | Deviation of Reference Input Current Over Full Temperature Range | $I_{KA} = 10\text{ mA}$, $R_1 = 10\text{ K}\Omega$, $R_2 = \infty$, $T_{MIN} \leq T_A \leq T_{MAX}$ | | 0.8 | 2.0 | μA |
| $I_{KA(MIN)}$ | Minimum Cathode Current for Regulation | $V_{KA} = V_{REF}$ | | 0.45 | 1.00 | mA |
| $I_{KA(OFF)}$ | Off -Stage Cathode Current | $V_{KA} = 36\text{ V}$, $V_{REF} = 0$ | | 0.05 | 1.00 | μA |
| Z_{KA} | Dynamic Impedance | $V_{KA} = V_{REF}$, $I_{KA} = 1\text{ to }100\text{ mA}$, $f \geq 1.0\text{ kHz}$ | | 0.15 | 0.50 | Ω |

Notes:6. $T_{MIN} = -40^\circ\text{C}$, $T_{MAX} = +85^\circ\text{C}$.7. The deviation parameters $V_{REF(dev)}$ and $I_{REF(dev)}$ are defined as the differences between the maximum and minimum values obtained over the rated temperature range. The average full-range temperature coefficient of the reference input voltage, αV_{REF} , is defined as:

$$|\alpha V_{REF}| \left(\frac{\text{ppm}}{^\circ\text{C}} \right) = \frac{\left(\frac{V_{REF(dev)}}{V_{REF(at 25^\circ\text{C})}} \right) \cdot 10^6}{T_{MAX} - T_{MIN}}$$

where $T_{MAX} - T_{MIN}$ is the rated operating free-air temperature range of the device. αV_{REF} can be positive or negative, depending on whether minimum V_{REF} or maximum V_{REF} , respectively, occurs at the lower temperature.Example: $V_{REF(dev)} = 4.5\text{ mV}$, $V_{REF} = 2500\text{ mV}$ at 25°C , $T_{MAX} - T_{MIN} = 125^\circ\text{C}$ for LM431SAI.

$$|\alpha V_{REF}| = \frac{\left(\frac{4.5\text{ mV}}{2500\text{ mV}} \right) \cdot 10^6}{125^\circ\text{C}} = 14.4\text{ ppm}/^\circ\text{C}$$

Because minimum V_{REF} occurs at the lower temperature, the coefficient is positive.

Test Circuits

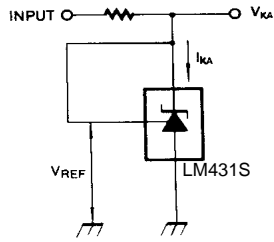


Figure 2. Test Circuit for $V_{KA} = V_{REF}$

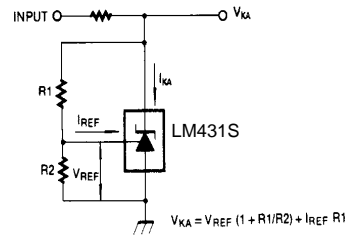


Figure 3. Test Circuit for $V_{KA} \geq V_{REF}$

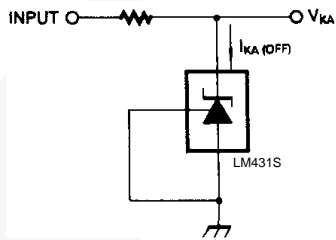


Figure 4. Test Circuit for $I_{KA(OFF)}$



Typical Performance Characteristics

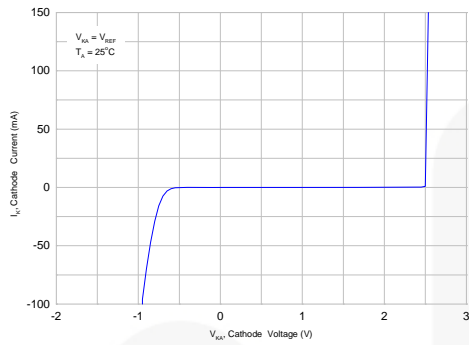


Figure 5. Cathode Current vs. Cathode Voltage

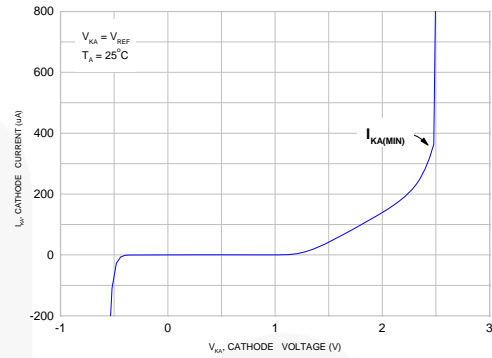


Figure 6. Cathode Current vs. Cathode Voltage

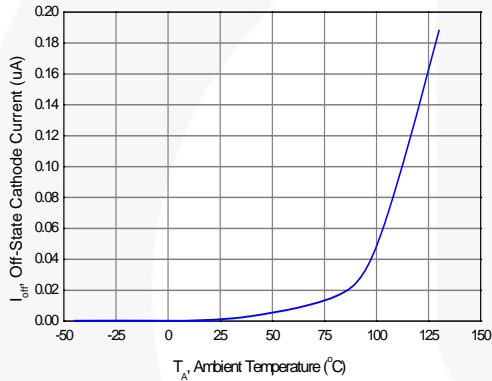


Figure 7. OFF-State Cathode Current vs. Ambient Temperature

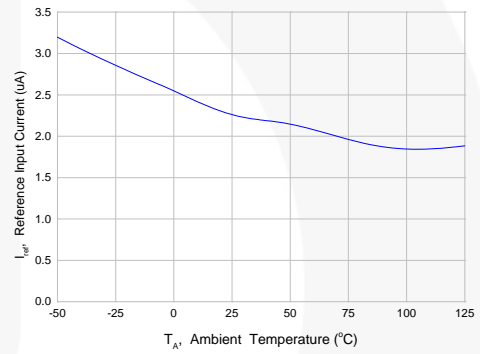


Figure 8. Reference Input Current vs. Ambient Temperature

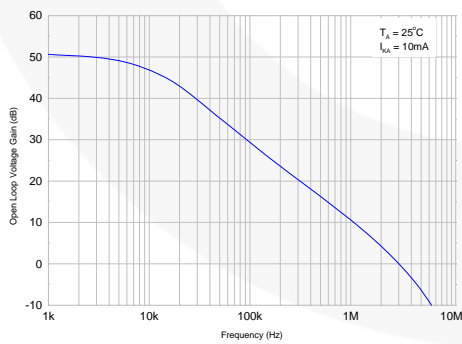


Figure 9. Frequency vs. Small Signal Voltage Amplification

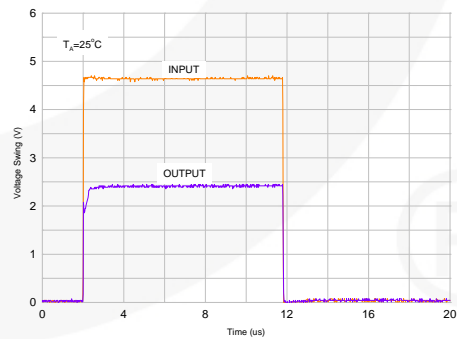


Figure 10. Pulse Response

Typical Performance Characteristics (Continued)

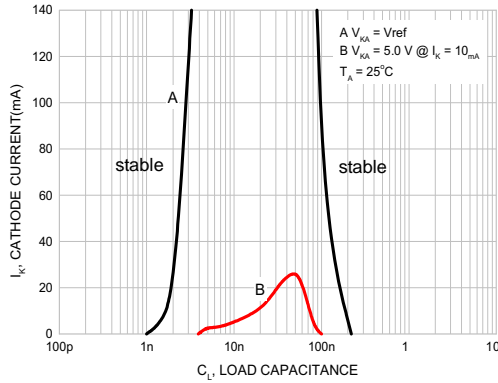


Figure 11. Stability Boundary Conditions

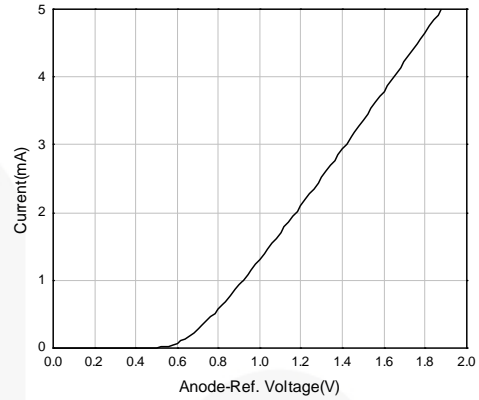


Figure 12. Anode-Reference Diode Curve

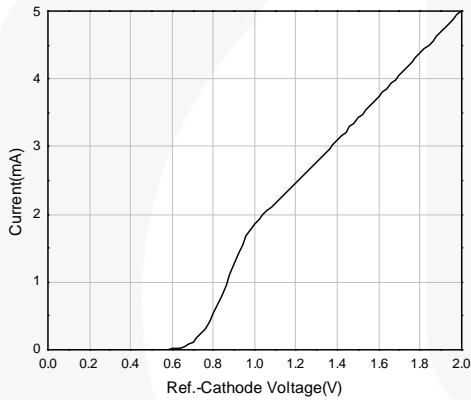


Figure 13. Reference-Cathode Diode Curve

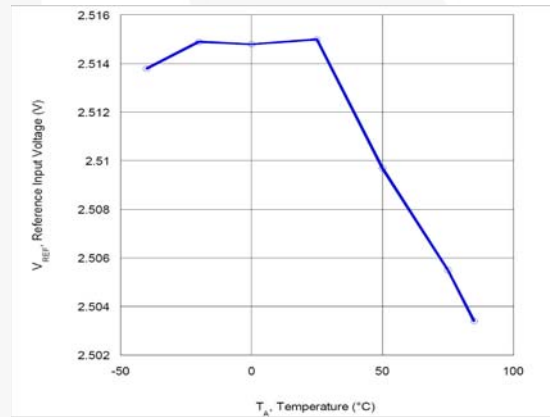


Figure 14. Reference Input Voltage vs. Ambient Temperature

Typical Application

$$V_O = \left(1 + \frac{R_1}{R_2}\right) V_{ref}$$

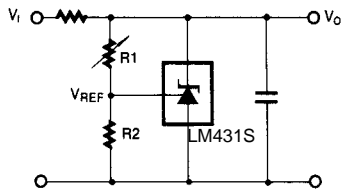


Figure 15. Shunt Regulator

$$V_O = V_{ref} \left(1 + \frac{R_1}{R_2}\right)$$

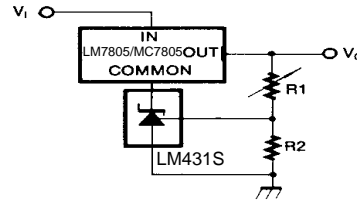


Figure 16. Output for Three-Terminal Fixed Regulator

$$V_O = \left(1 + \frac{R_1}{R_2}\right) V_{ref}$$

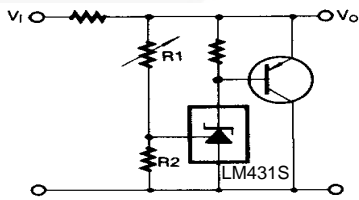


Figure 17. High Current Shunt Regulator

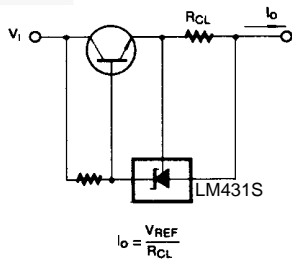


Figure 18. Current Limit or Current Source

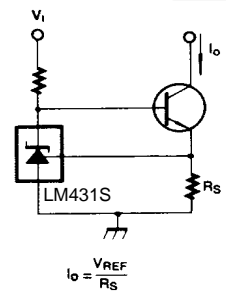
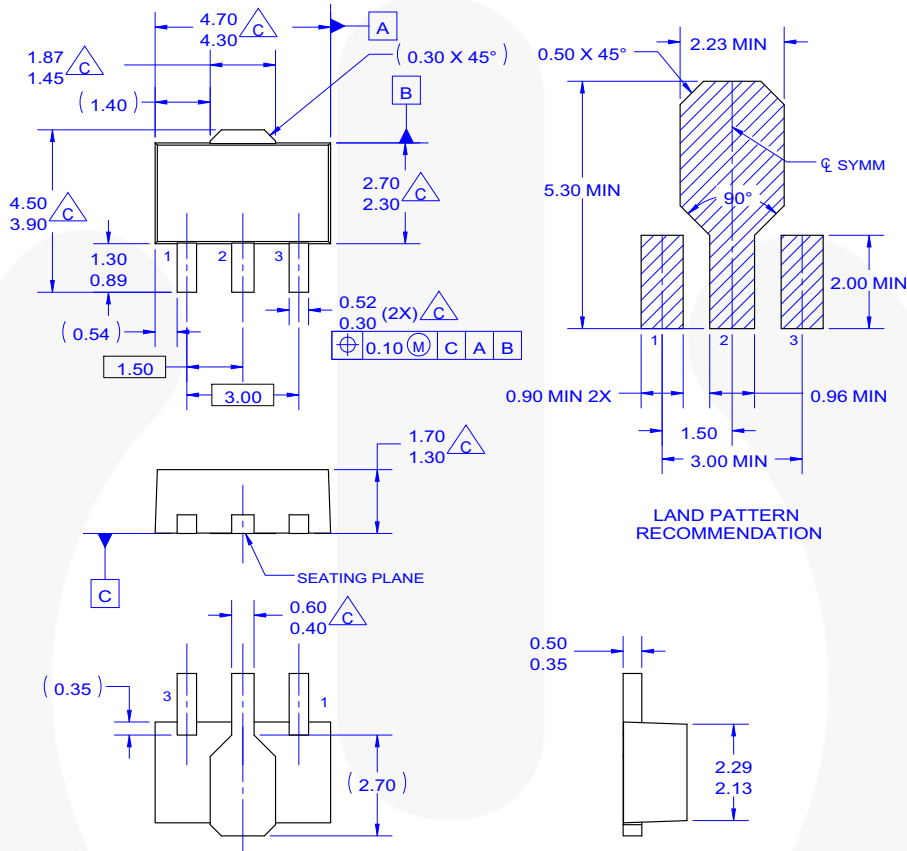


Figure 19. Constant-Current Sink

Physical Dimensions

SOT-89



NOTES: UNLESS OTHERWISE SPECIFIED.

- A. REFERENCE TO JEDEC TO-243 VARIATION AA.
- B. ALL DIMENSIONS ARE IN MILLIMETERS.
- C. DOES NOT COMPLY JEDEC STANDARD VALUE.
- D. DIMENSIONS ARE EXCLUSIVE OF BURRS, MOLD FLASH AND TIE BAR PROTRUSION.
- E. DIMENSION AND TOLERANCE AS PER ASME Y14.5-1994.
- F. DRAWING FILE NAME: MA03CREV3

Figure 20. 3-LEAD, SOT-89, JEDEC TO-243, OPTION AA (ACTIVE)

Package drawings are provided as a service to customers considering Fairchild components. Drawings may change in any manner without notice. Please note the revision and/or date on the drawing and contact a Fairchild Semiconductor representative to verify or obtain the most recent revision. Package specifications do not expand the terms of Fairchild's worldwide terms and conditions, specifically the warranty therein, which covers Fairchild products.

Always visit Fairchild Semiconductor's online packaging area for the most recent package drawings:
<http://www.fairchildsemi.com/dwg/MA/MA03C.pdf>

For current tape and reel specifications, visit Fairchild Semiconductor's online packaging area:
http://www.fairchildsemi.com/packing_dwg/PKG-MA03C_JCET.pdf

Physical Dimensions

SOT-23F

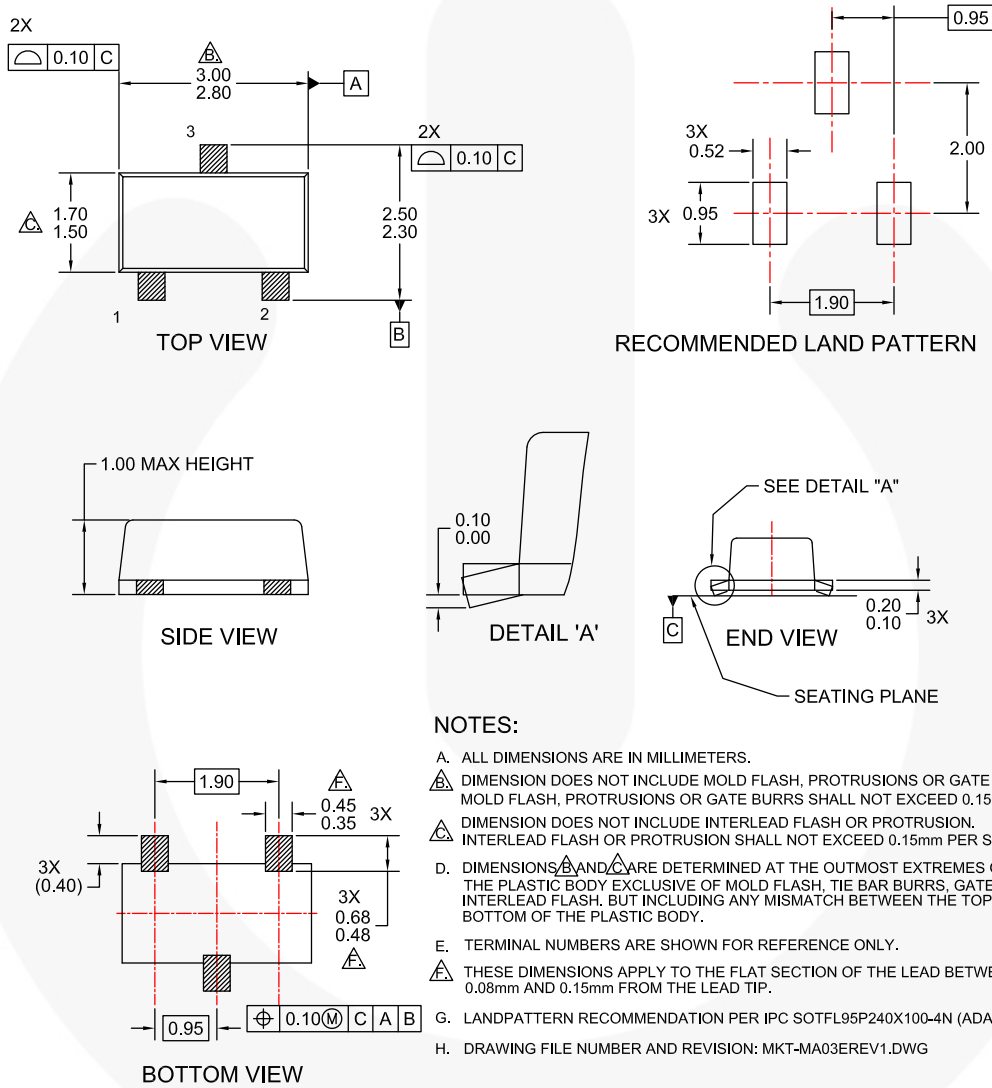


Figure 21. 3-LEAD, SOT-23, FLAT LEAD, LOW PROFILE (ACTIVE)

Package drawings are provided as a service to customers considering Fairchild components. Drawings may change in any manner without notice. Please note the revision and/or date on the drawing and contact a Fairchild Semiconductor representative to verify or obtain the most recent revision. Package specifications do not expand the terms of Fairchild's worldwide terms and conditions, specifically the warranty therein, which covers Fairchild products.

Always visit Fairchild Semiconductor's online packaging area for the most recent package drawings:

<http://www.fairchildsemi.com/dwg/MA/MA03E.pdf>

For current tape and reel specifications, visit Fairchild Semiconductor's online packaging area:

http://www.fairchildsemi.com/packaging_dwg/PKG-MA03E.pdf

Physical Dimensions

SOT-23

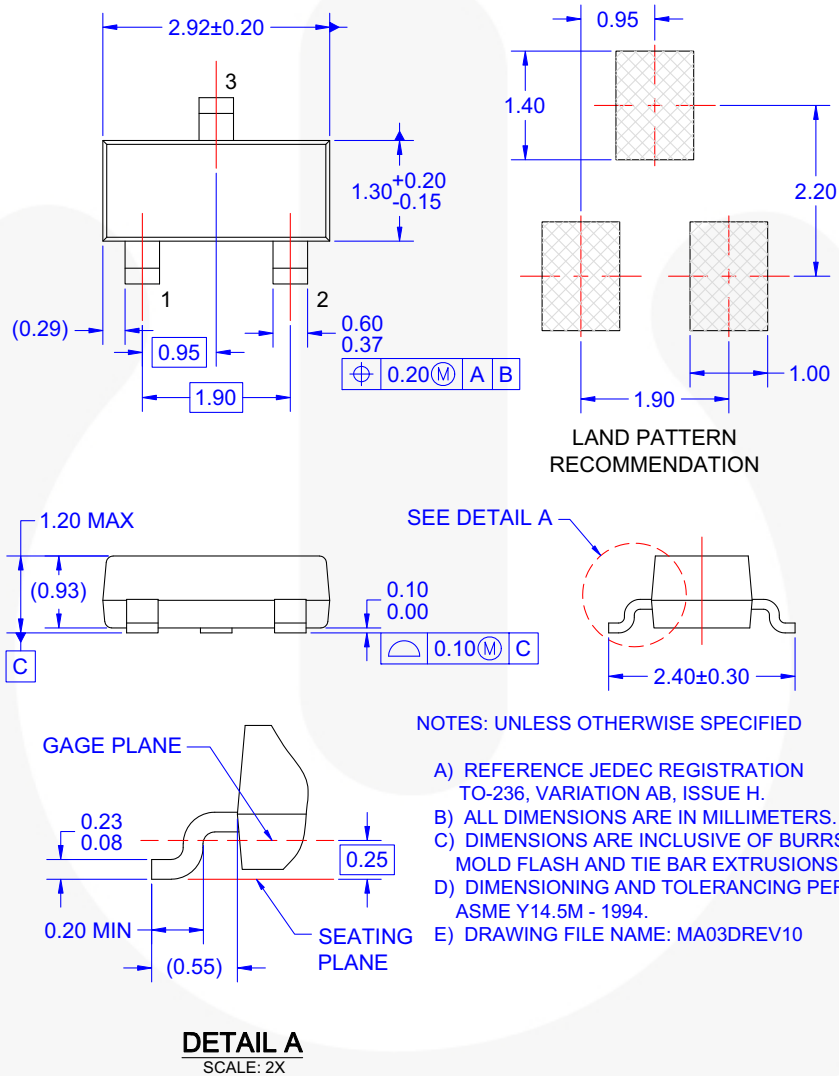


Figure 22. 3-LEAD, SOT-23, JEDEC TO-236, LOW PROFILE (ACTIVE)

Package drawings are provided as a service to customers considering Fairchild components. Drawings may change in any manner without notice. Please note the revision and/or date on the drawing and contact a Fairchild Semiconductor representative to verify or obtain the most recent revision. Package specifications do not expand the terms of Fairchild's worldwide terms and conditions, specifically the warranty therein, which covers Fairchild products.

Always visit Fairchild Semiconductor's online packaging area for the most recent package drawings:
<http://www.fairchildsemi.com/dwg/MA/MA03D.pdf>

For current tape and reel specifications, visit Fairchild Semiconductor's online packaging area:
http://www.fairchildsemi.com/packing_dwg/PKG-MA03D_JCET.pdf



TRADEMARKS

The following includes registered and unregistered trademarks and service marks, owned by Fairchild Semiconductor and/or its global subsidiaries, and is not intended to be an exhaustive list of all such trademarks.

- | | | | |
|---|--|---|---|
| 2Cool™ | FPS™ |  | Sync-Lock™ |
| AccuPower™ | F-PFS™ | PowerTrench® |  |
| AX-CAP®* | FRFET® | PowerXS™ | TinyBoost® |
| BitSiC™ | Global Power Resource SM | Programmable Active Droop™ | TinyBuck® |
| Build it Now™ | GreenBridge™ | QFET® | TinyCalc™ |
| CorePLUS™ | Green FPS™ | QS™ | TinyLogic® |
| CorePOWER™ | Green FPS™ e-Series™ | Quiet Series™ | TINYOPTO™ |
| CROSSVOLT™ | Gmax™ | RapidConfigure™ | TinyPower™ |
| CTL™ | GTO™ |  | TinyPWM™ |
| Current Transfer Logic™ | IntelliMAX™ | Saving our world, 1mW/W/kW at a time™ | TinyWire™ |
| DEUXPEED® | ISOPLANAR™ | SignalWise™ | TranSiC™ |
| Dual Cool™ | Making Small Speakers Sound Louder and Better™ | SmartMax™ | TriFault Detect™ |
| EcoSPARK® | MegaBuck™ | SMART START™ | TRUECURRENT®* |
| EfficientMax™ | MICROCOUPLER™ | Solutions for Your Success™ | µSerDes™ |
| ESBC™ | MicroFET™ | SPM® |  |
|  | MicroPak™ | STEALTH™ | UHC® |
| Fairchild® | MicroPak2™ | SuperFET® | Ultra FRFET™ |
| Fairchild Semiconductor® | MillerDrive™ | SuperSOT™-3 | UniFET™ |
| FACT Quiet Series™ | MotionMax™ | SuperSOT™-6 | VXC™ |
| FACT® | mWSaver® | SuperSOT™-8 | VisualMax™ |
| FAST® | OptoHiT™ | SupreMOS® | VoltagePlus™ |
| FastvCore™ | OPTOLOGIC® | SyncFET™ | XS™ |
| FETBench™ | OPTOPLANAR® | | |

* Trademarks of System General Corporation, used under license by Fairchild Semiconductor.

DISCLAIMER

FAIRCHILD SEMICONDUCTOR RESERVES THE RIGHT TO MAKE CHANGES WITHOUT FURTHER NOTICE TO ANY PRODUCTS HEREIN TO IMPROVE RELIABILITY, FUNCTION, OR DESIGN. FAIRCHILD DOES NOT ASSUME ANY LIABILITY ARISING OUT OF THE APPLICATION OR USE OF ANY PRODUCT OR CIRCUIT DESCRIBED HEREIN; NEITHER DOES IT CONVEY ANY LICENSE UNDER ITS PATENT RIGHTS, NOR THE RIGHTS OF OTHERS. THESE SPECIFICATIONS DO NOT EXPAND THE TERMS OF FAIRCHILD'S WORLDWIDE TERMS AND CONDITIONS, SPECIFICALLY THE WARRANTY THEREIN, WHICH COVERS THESE PRODUCTS.

LIFE SUPPORT POLICY

FAIRCHILD'S PRODUCTS ARE NOT AUTHORIZED FOR USE AS CRITICAL COMPONENTS IN LIFE SUPPORT DEVICES OR SYSTEMS WITHOUT THE EXPRESS WRITTEN APPROVAL OF FAIRCHILD SEMICONDUCTOR CORPORATION.

As used herein:

1. Life support devices or systems are devices or systems which, (a) are intended for surgical implant into the body or (b) support or sustain life, and (c) whose failure to perform when properly used in accordance with instructions for use provided in the labeling, can be reasonably expected to result in a significant injury of the user.
2. A critical component in any component of a life support, device, or system whose failure to perform can be reasonably expected to cause the failure of the life support device or system, or to affect its safety or effectiveness.

ANTI-COUNTERFEITING POLICY

Fairchild Semiconductor Corporation's Anti-Counterfeiting Policy. Fairchild's Anti-Counterfeiting Policy is also stated on our external website, www.fairchildsemi.com, under Sales Support.

Counterfeiting of semiconductor parts is a growing problem in the industry. All manufacturers of semiconductor products are experiencing counterfeiting of their parts. Customers who inadvertently purchase counterfeit parts experience many problems such as loss of brand reputation, substandard performance, failed applications, and increased cost of production and manufacturing delays. Fairchild is taking strong measures to protect ourselves and our customers from the proliferation of counterfeit parts. Fairchild strongly encourages customers to purchase Fairchild parts either directly from Fairchild or from Authorized Fairchild Distributors who are listed by country on our web page cited above. Products customers buy either from Fairchild directly or from Authorized Fairchild Distributors are genuine parts, have full traceability, meet Fairchild's quality standards for handling and storage and provide access to Fairchild's full range of up-to-date technical and product information. Fairchild and our Authorized Distributors will stand behind all warranties and will appropriately address any warranty issues that may arise. Fairchild will not provide any warranty coverage or other assistance for parts bought from Unauthorized Sources. Fairchild is committed to combat this global problem and encourage our customers to do their part in stopping this practice by buying direct or from authorized distributors.

PRODUCT STATUS DEFINITIONS

Definition of Terms

| Datasheet Identification | Product Status | Definition |
|--------------------------|-----------------------|---|
| Advance Information | Formative / In Design | Datasheet contains the design specifications for product development. Specifications may change in any manner without notice. |
| Preliminary | First Production | Datasheet contains preliminary data; supplementary data will be published at a later date. Fairchild Semiconductor reserves the right to make changes at any time without notice to improve design. |
| No Identification Needed | Full Production | Datasheet contains final specifications. Fairchild Semiconductor reserves the right to make changes at any time without notice to improve the design. |
| Obsolete | Not In Production | Datasheet contains specifications on a product that is discontinued by Fairchild Semiconductor. The datasheet is for reference information only. |