

Infrared thermometers for demanding applications

Features:

- Temperature ranges from 0 °C to 2000 °C
- High optical resolutions up to 300:1
- Precise aiming with laser and scope sighting
- Adjustable emissivity from 0.100–1.000
- Different spectral responses for a variety of advanced applications
- MAX/MIN function and audible and visible HIGH/LOW alarm
- USB interface, free optris® Connect Software
- Data logger for 2000 measured values



General Specifications

Ambient temperature	0 °C ... 50 °C
Storage temperature	-20 °C ... 60 °C (no battery)
Relative humidity	10–95 %, non-condensing
Size	264 x 204 x 60 mm
Weight	1000 g

Electrical Specifications

Output / digital	USB interface
Power	Ni-MH rechargeable battery
Battery lifetime	5 h laser and backlight on 25 h without laser and backlight
AC Adapter	220 V AC, 50/60 Hz

Measurement Specifications

Temperature range	0 °C ... 1300 °C (P20 LT) 650 °C ... 1800 °C (P20 1M) 385 °C ... 1600 °C (P20 2M) 1000 °C ... 2000 °C (P20 05M)
Spectral range	8–14 µm (P20 LT) 1.0 µm (P20 1M) 1.6 µm (P20 2M) 525 nm (P20 05M)
Optical resolution	120:1 (P20 LT) 300:1 (P20 1M/2M) 150:1 (P20 05M)
System accuracy (at T _{Amb} = 23 ±5 °C)	±1 % or ±2 °C (P20 LT) ¹⁾ ±(0.3 % of reading +2 °C) (1M/2M, 05M)
Repeatability	±0.5 % or ±1 °C (P20 LT) ¹⁾ ±(0.1 % of reading +1 °C) (1M/2M, 05M)
Temperature resolution	1 K
Response time	300 ms (P20 LT) 100 ms (1M/2M, 05M)
Emissivity (adjustable)	0.100–1.000
Sighting	Double laser class II (<1 mW)
Sighting scope	All models
Signal processing	MAX/MIN, Scan/Hold function
Alarm functions	Audible and visible HIGH/LOW alarm
Data storage	2000 values
LCD backlight	Three color alarm indication
Software	optris® Connect

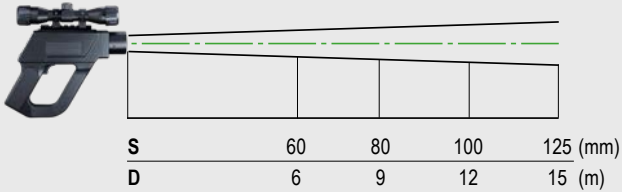
¹⁾ Whichever is greater

optris® P20 Serie

Optical Specifications

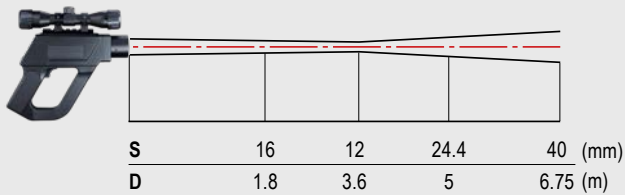
P20 LT

D:S = 120:1



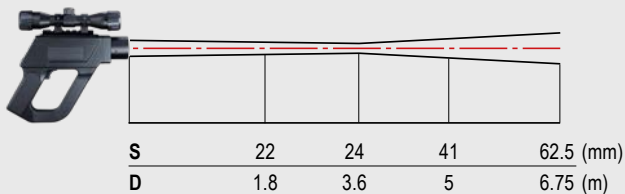
P20 1M/2M

D:S = 300:1

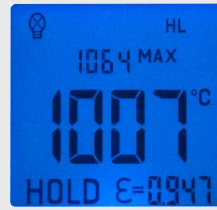


P20 05M

D:S = 150:1

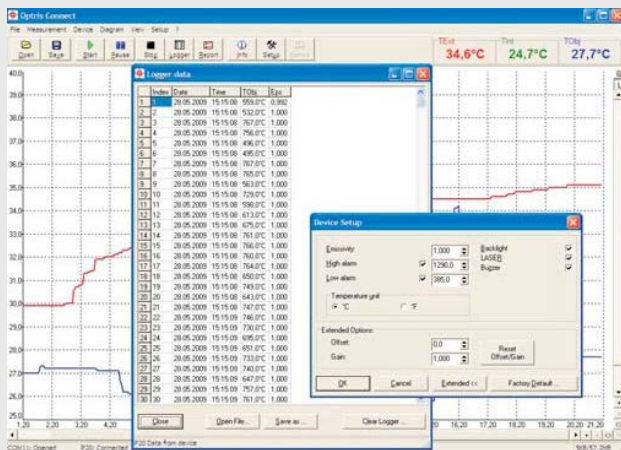


Display



HIGH-/LOW-alarm
(3-coloured display)

Optris Connect – Reporting Software



- Setup of parameters
- Download of logger data
- Display and record of temperature trends
- Image based report function
- Runs on Windows 8-tablet PCs
- Software included

