






AS-Interface M12 branch U_ASI without Uaux, with M12 socket IP67/68/69K, max. 4 A





General technical data		
Type of device		AS-Interface accessories
Function		AS-i flat cable transition to M12
operating voltage according to AS-Interface specification	V	26.5 ... 31.6
Operating current rated value	A	4
Number sockets		1
Note		cable must not end in the feeder
Connections/ Terminals		
Connection system		insulation piercing method for AS-Interface flat cable
Inputs		
Inputs socket assignment		1 = ASI + 3=ASI -
Mechanical data		
Type of mounting		screw fixing
Tightening torque of fastening bolt	N·m	1.65 ... 1.65
Contacts Load rating max	A	4
Ambient conditions		
Ambient temperature	°C	-25 ... +75

Ambient temperature during storage	°C	-25 ... +85
degree of protection		IP67/68/69K

Certificates/ approvals

General Product Approval	EMC	Declaration of Conformity	Shipping Approval
 UL	 EAC	 RCM	 EG-Konf.
		Miscellaneous	 ABS

Shipping Approval	other
 PRS	 RMRS
	Confirmation

Further information

Information- and Downloadcenter (Catalogs, Brochures,...)

<https://www.siemens.com/ic10>

Industry Mall (Online ordering system)

<https://mall.industry.siemens.com/mall/en/en/Catalog/product?mlfb=3RK1901-2NR10>

Cax online generator

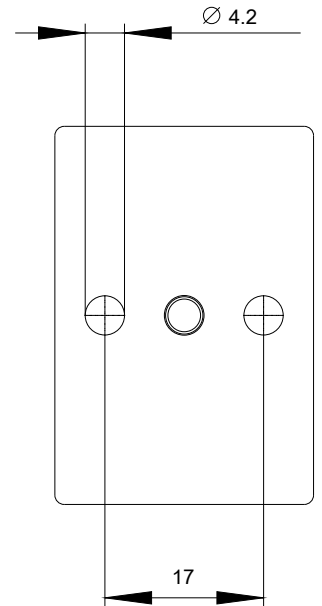
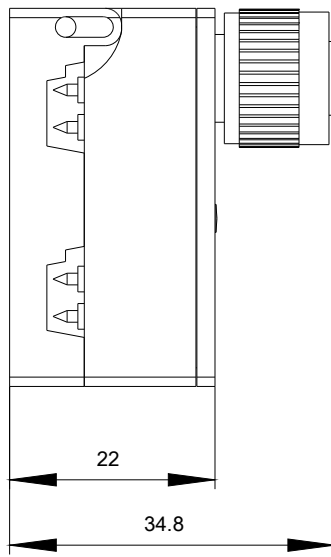
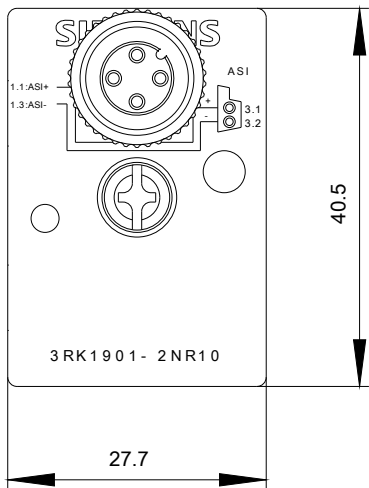
<http://support.automation.siemens.com/WW/CAXorder/default.aspx?lang=en&mlfb=3RK1901-2NR10>

Service&Support (Manuals, Certificates, Characteristics, FAQs,...)

<https://support.industry.siemens.com/cs/ww/en/ps/3RK1901-2NR10>

Image database (product images, 2D dimension drawings, 3D models, device circuit diagrams, EPLAN macros, ...)

http://www.automation.siemens.com/bilddb/cax_de.aspx?mlfb=3RK1901-2NR10&lang=en



last modified:

03/08/2020