

- 1
- 2
- 3
- 4
- 5
- 6
- 7
- 8
- 9
- 10
- 11
- 12
- 13
- 14
- 15
- 16
- 17
- 18

MATERIAL

Die-cast zinc alloy.

CONICAL FRICTIONING ELEMENTS

Acetal resin based (POM) technopolymer.

ADJUSTING SCREW AND NUT

Zinc-plated steel.

STANDARD EXECUTIONS

- **CMUF-SR**: epoxy resin coating, RAL 9006 light-grey colour, matte finish.
- **CMUF-SW**: epoxy resin coating, RAL 9005 black colour, matte finish.

WORKING TEMPERATURE

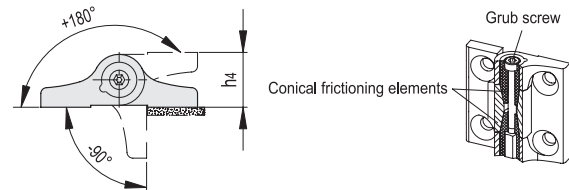
80°C.

FEATURES AND APPLICATIONS

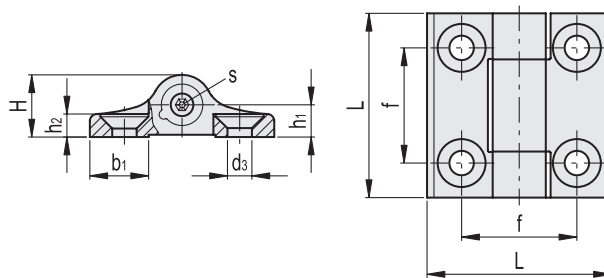
The braking torque can be varied by means of the adjusting axial screw acting on the friction of the two conical elements.

ROTATION ANGLE (APPROXIMATE VALUE)

Max 270° (-90° and +180° being 0° the condition where the two interconnected surfaces are on the same plane).



Conversion Table	
1 mm = 0.039 inch	
mm	inch
40	1.57
50	1.97
60	2.36



METRIC

CMUF-SR

Code	Description	L	d3	f	H	h1	h2	h4	b1	s	C [Nm]*	C [Nm]#	⚖
428851	CMUF.40-SH-5-SR	40	5.3	25	13.5	7	5	14	13	2.5	0.5	2	50
428861	CMUF.50-SH-6-SR	50	6.5	30	15.5	8	6	16	16.5	3	0.75	4	90
428871	CMUF.60-SH-8-SR	60	8.3	36	18.5	9.5	7.5	19	20	4	1.5	6.5	160

CMUF-SW

Code	Description	L	d3	f	H	h1	h2	h4	b1	s	C [Nm]*	C [Nm]#	⚖
428853	CMUF.40-SH-5-SW	40	5.3	25	13.5	7	5	14	13	2.5	0.5	2	50
428863	CMUF.50-SH-6-SW	50	6.5	30	15.5	8	6	16	16.5	3	0.75	4	90
428873	CMUF.60-SH-8-SW	60	8.3	36	18.5	9.5	7.5	19	20	4	1.5	6.5	160

* Suggested max tightening torque of the grub screw.
Resistant torque obtained by means of the grub screw.