

# PERFORMANCE SPECIFICATION

PRODUCT TITLE : AC AXIAL FAN

MODEL NO : A5722E-38L-B04 直焊叶

**1、SCOPE :**

THIS SPECIFICATION DEFINES THE ELECTRICAL AND MECHANICAL CHARACTERISTICS OF THE AC BRUSHLESS AXIAL FLOW FAN·THE FAN MOTOR IS SHADED POLE MOTOR·

**2、ELECTRICAL CHARACTERISTICS :**

ALL MEASUREMENTS PERFORMED AT 20~30°C ROOM TEMPERATURE &50~70% R.H.UNLESS OTHERWISE SPECIFIED. SPEED MEASURED AFTER CONTINUOUS 10 MINUTE OPERATION AT RATED VOLTAGE IN CLEAN AIR.

ITEM	DESCRIPTION	UNIT	SYMBOL	SPEC.		CONDITION
				50Hz	60Hz	
1	RATED VOLTAGE	VOLTS	V	380		
2	OPERATION VOLTAGE	VOLTS	V	265~395		
3	INPUT CURRENT	AMP	A	0.30MAX	0.28MAX	AT RATED VOLTAGE
4	INPUT POWER	WATTS	W	46MAX	44MAX	AT RATED VOLTAGE
5	ROTATION SPEED	RPM	RPM	2750±10%	3100±10%	AT RATED VOLTAGE FREE AIR
6	ACOUSTICAL NOISE (AVG)	dB(A)	dB(A)	52±10%	56±10%	DETAILS SEE ATTACHED PAGE.
7	MAX. AIR-FLOW	CFM	Q	200±10%	240±10%	TWO-CHAMBER METHODS DETAILS SEE ATTACHED PAGE.
8	MAX. AIR-PRESSURE	mmH <sub>2</sub> O	P	13±10%	15.5±10%	TWO-CHAMBER METHODS DETAILS SEE ATTACHED PAGE.
9	INSULATION RESISTANCE	MEG. OHM	MΩ	100MΩ MIN. AT 500V DC		BETWEEN FRAME AND LEAD WIRE.
10	DIELECTRIC STRENGTH			WITHSTANDING AT 1400V AC 60Hz. FOR 1 MINUTE		BETWEEN FRAME AND LEAD WIRE.

FILE NO :

REVISIONS :

ITEM	DESCRIPTION	SPEC.	
11	ROTATION	CW VIEW FROM NAME PLATE SIDE	
12	AIR-FLOW DIRECTION	AIR INTAKE OVER THE STRUTS	
13	INSULATION CLASS	CLASS B	
14	LIFE EXPECTANCY	50000 HOURS CONTINUOUS	□

□ LIFE IS DEFINED AS THE TIME MOTOR SPEED DECREASED MORE THAN 30% COMPARED WITH INITIAL VALUE.

### 3、MECHANICAL

- 3-1. DIMENSIONS----- SEE SECTION 8
- 3-2. FRAME----- METAL CONSTRUCTION WITH ALUMINUM DIE-CASTING.
- 3-3. IMPELLER----- MADE OF METAL MATERIAL SPOT WELDING ON ROTOR SHELL.
- 3-4. COATING -----CED ( CATHONIC ELECTRODEPOSITION COATING WITH EPOXY ) COATING ON METAL SURFACE BE CAPABLE OF IMPACT RESISTANT AND ABRASION RESISTANT.
- 3-5. BEARING SYSTEM ----- BALL BEARING
- 3-6. WEIGHT ----- 1000 GRAMS
- 3-7. LEAD WIRE ----- 1430 AWG # 20
- 3-8. TYPE OF OUTPUT : LEADWIRE
- 3-9. PLASTIC PARTS ----- UNFLAMABLE MATERIAL , MEET UL 94V-0 RATING.

### 4、ENVIRONMENTAL :

- 4-1. OPERATING TEMPERATURE ----- -10 TO +75 °C
- 4-2. STORAGE TEMPERATURE ----- -30 TO +75°C

FILE NO :

REVISIONS :

4-3. OPERATING HUMIDITY----- RH 20% ~ 85%

5、PROTECTION：

5-1. IMPEDANCE PROTECTION

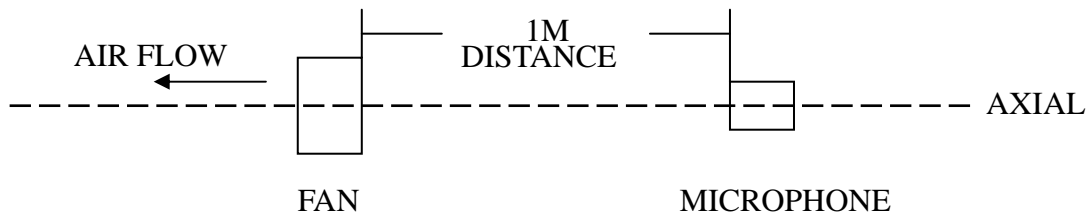
IMPEDANCE OF MOTOR COIL WINDING PROTECTS MOTOR FROM FLAMING IN THE CONDITION OF 72 Hrs LOCKED ROTOR AT RATED VOLTAGE.

5-2.THERMO PROTECTION：

BUILT-IN THERMOSTAT DEVICE. LIMITS THE TEMPERATURE OF MOTOR COIL FOR OVERHEATING PROTECTION .

6、ACOUSTICAL NOISE：

6-1. MEASUREMENT SET-UP



6-2. MEASUREMENT PERFORMED IN ANECHOIC TEST CHAMBER UNDER FREE AIR CONDITION .

6-3. CHAMBER BACKGROUND NOISE 17dB MAX .

6-4. READING TAKEN FROM SPECTRUM ANALYZER .

6-5. NOISE DISTRIBUTION CURVE SEE ATTACHED PAGE .

7、STATICS PRESSURE VS AIR FLOW CURVE：

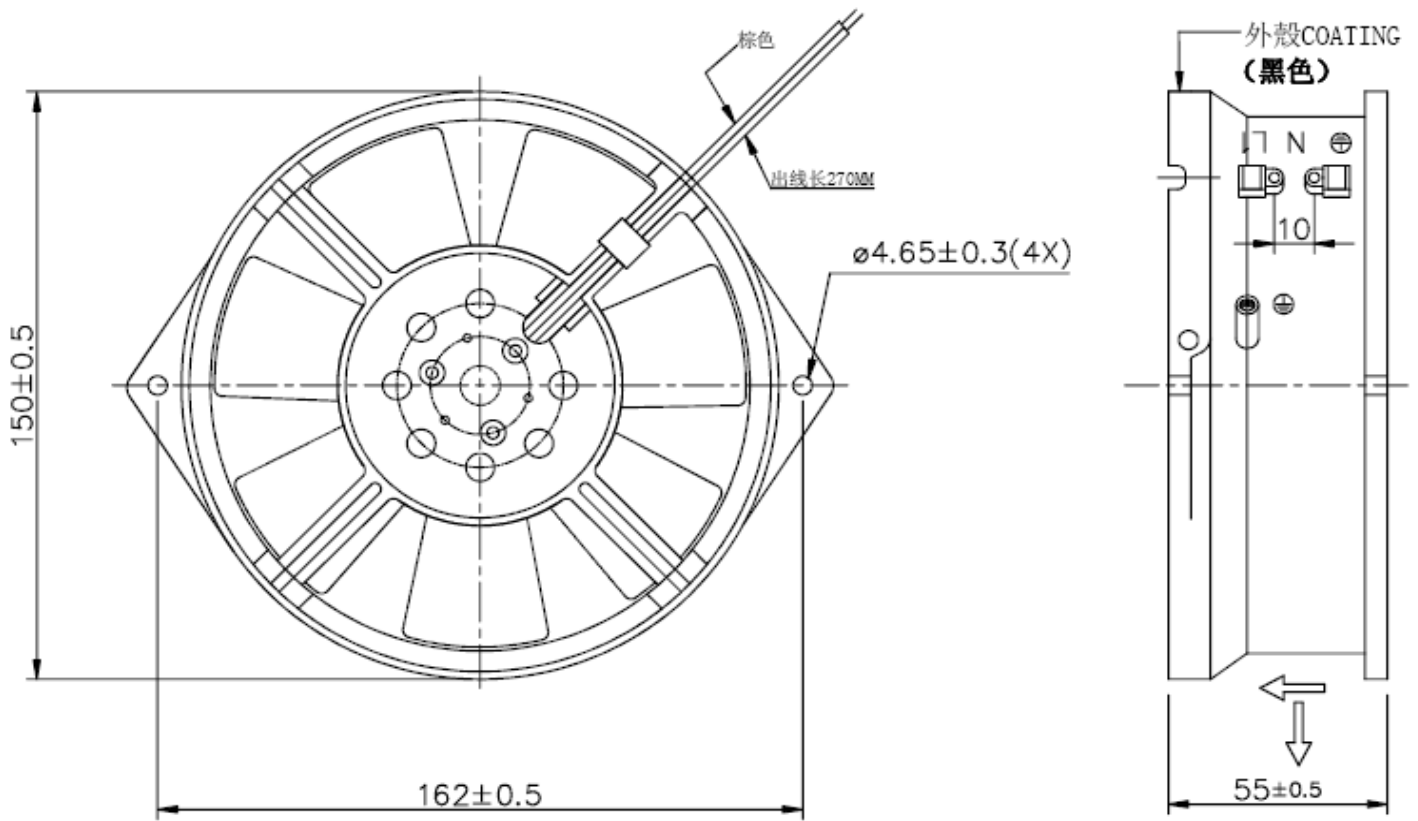
MEASURED PER TWO CHAMBER METHOD .  
DATA-CURVE SEE ATTACHED PAGE .

FILE NO：

REVISIONS：

8、DIMENSIONS DRAWING：

UNIT:mm



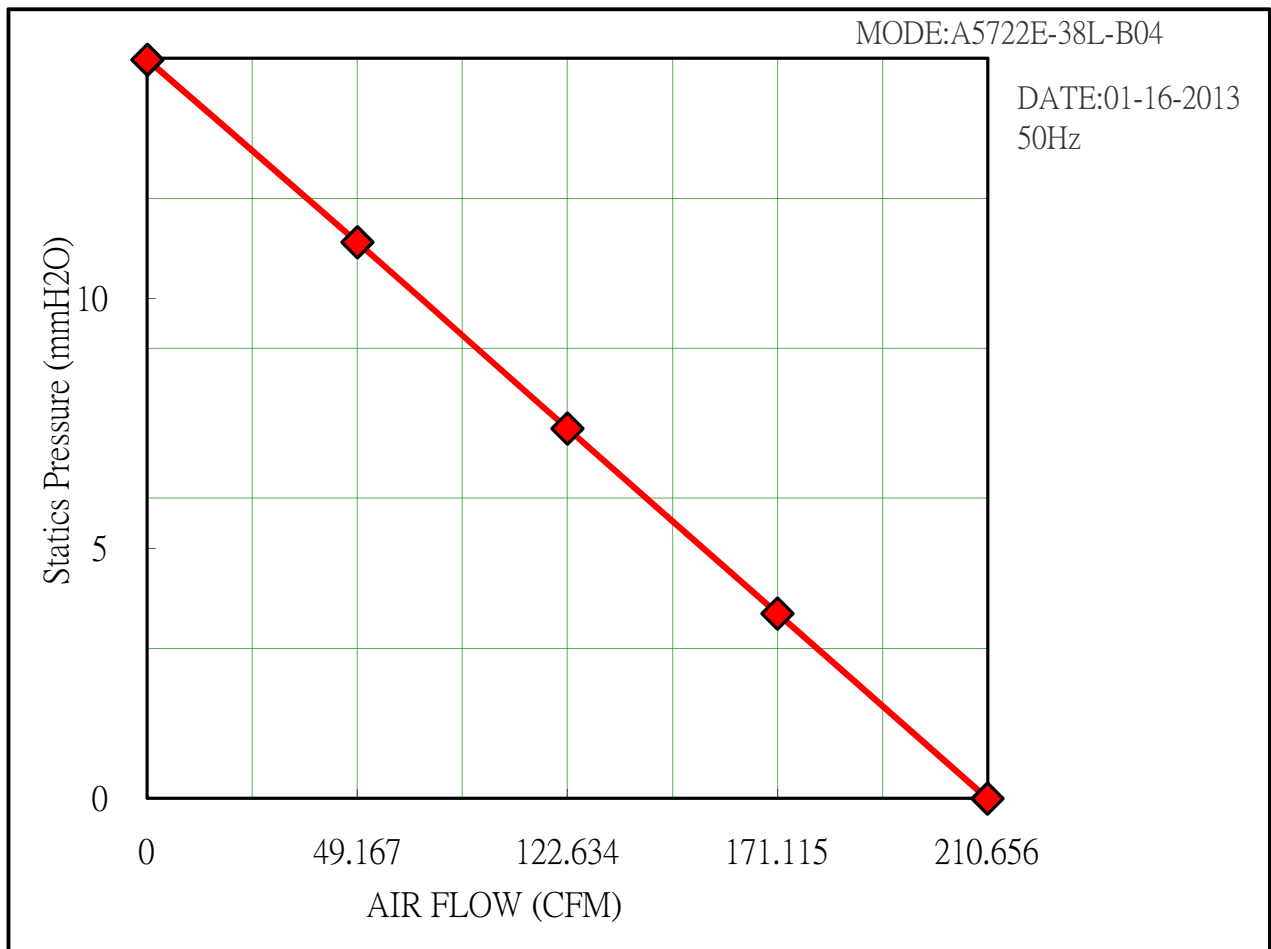
FILE NO：

REVISIONS：

Customer:  
 Fan Mode: A5722E-38L-B04  
 Testing Method: Constant Voltage  
 Testing Voltage:  
 Barometric Pressure (cmHg):  
 Dry Bulb Temperature (o C):22  
 Relative Humidity (%)50  
 File Name: 50Hz

Test No: A5722E-38L-B04  
 System Setup:outlet Chamber  
 Testing Date: 01-16-2013  
 Barometric Density (kg/m3):  
 Testing Engineer:  
 Remark: 直焊叶

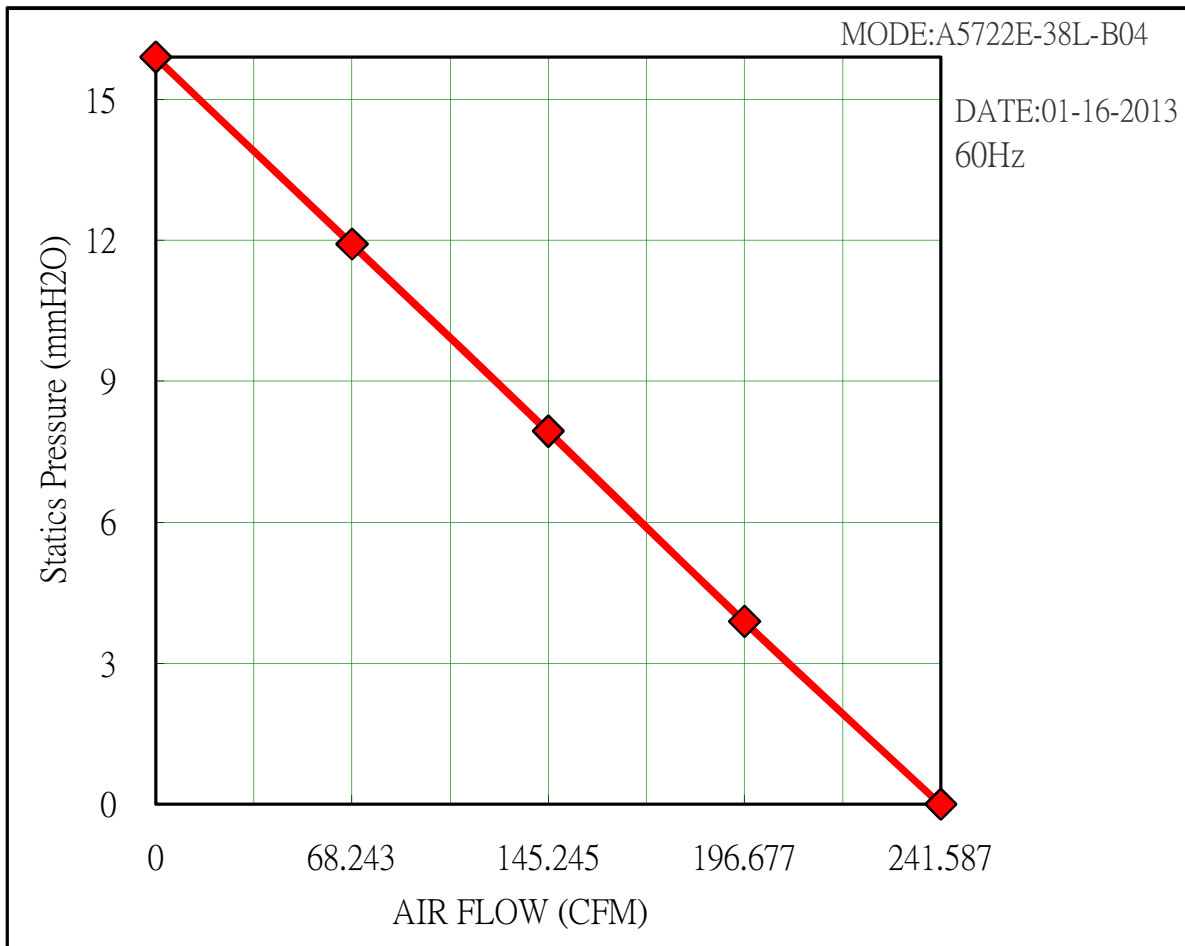
No	CFM	mmAq	inAq	mA	RPM	Watt
1	0	14.8	0.601	148	2610	38.20
2	49.167	11.13	0.453	149	2670	38.20
3	122.634	7.400	0.301	150	2700	38.50
4	171.115	3.700	0.141	151	2740	38.60
5	210.656	0	0	151	2820	38.80



Customer:  
 Fan Mode: A5722E-38L-B04  
 Testing Method: Constant Voltage  
 Testing Voltage:  
 Barometric Pressure (cmHg):  
 Dry Bulb Temperature (o C):22  
 Relative Humidity (%)50  
 File Name: 60Hz

Test No: A5722E-38L-B04  
 System Setup:outlet Chamber  
 Testing Date: 01-16-2013  
 Barometric Density (kg/m3):  
 Testing Engineer:  
 Remark: 直焊葉

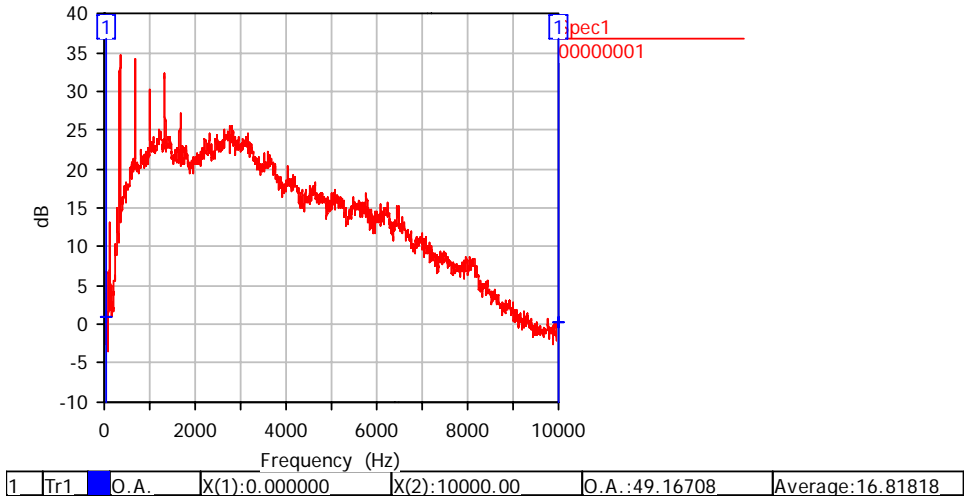
No	CFM	mmAq	inAq	mA	RPM	Watt	
1	0	15.900	0.646	170	2720	41.30	
2	68.243	11.92	0.485	170	2980	41.30	
3	145.245	7.940	0.322	170	3020	41.60	
4	196.677	3.890	0.156	171	3120	42.00	
5	241.587	0	0	171	3280	42.10	





MODEL NO : A5722E-38L-B04 50Hz TEST PURPOSE  Evaluation  
 SAMPLING : 1 PCS  IPQC  
 直焊式  QA

MODEL NO:  
 TEST FREQ  
 10KHz  
 TEST SENS  
 0dBA  
 TRIG SENS  
 0/128  
 Y AXIS UP  
 20  
 Y AXIS LW  
 -20  
 AVERAGE



ANALYSIS : -----  
 -----  
 -----  
 -----

(1)Background Noise: 17dB(A)  
 (2)FFT Analyzer  
 (3) Sound Pressure Level Meter  
 NO.A5722E-38L-B04 50Hz

Reporter : Sophia yang  
 Date : 2013/01/16



MODEL NO : A5722E-38L-B04 60Hz

TEST PURPOSE  Evaluation

SAMPLING : 1 PCS

IPQC

直焊式60Hz

QA

MODEL NO:

TEST FREQ

10KHz

TEST SENS

0dB

TRIG SENS

0/128

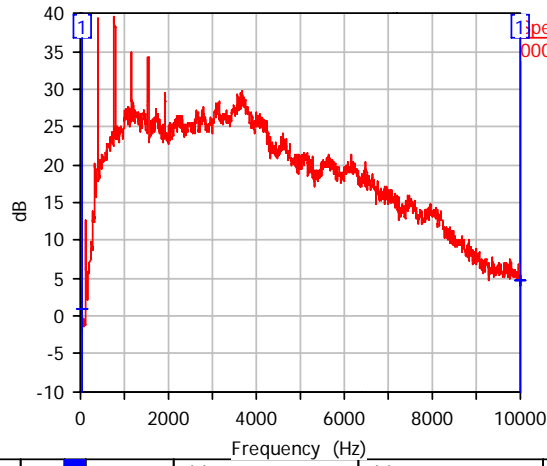
Y AXIS UP

20

Y AXIS LW

-20

AVERAGE



1 Tr1 O.A. X(1):0.000000 X(2):10000.00 O.A.:53.30535 Average:21.19869

ANALYSIS : -----  
 -----  
 -----  
 -----  
 -----

(1) Background Noise: 17dB(A)

(2) FFT Analyzer

(3) Sound Pressure Level Meter

NO.A5722E-38L-B04 60Hz

Reporter : Sophia yang

Date : 2013/01/16