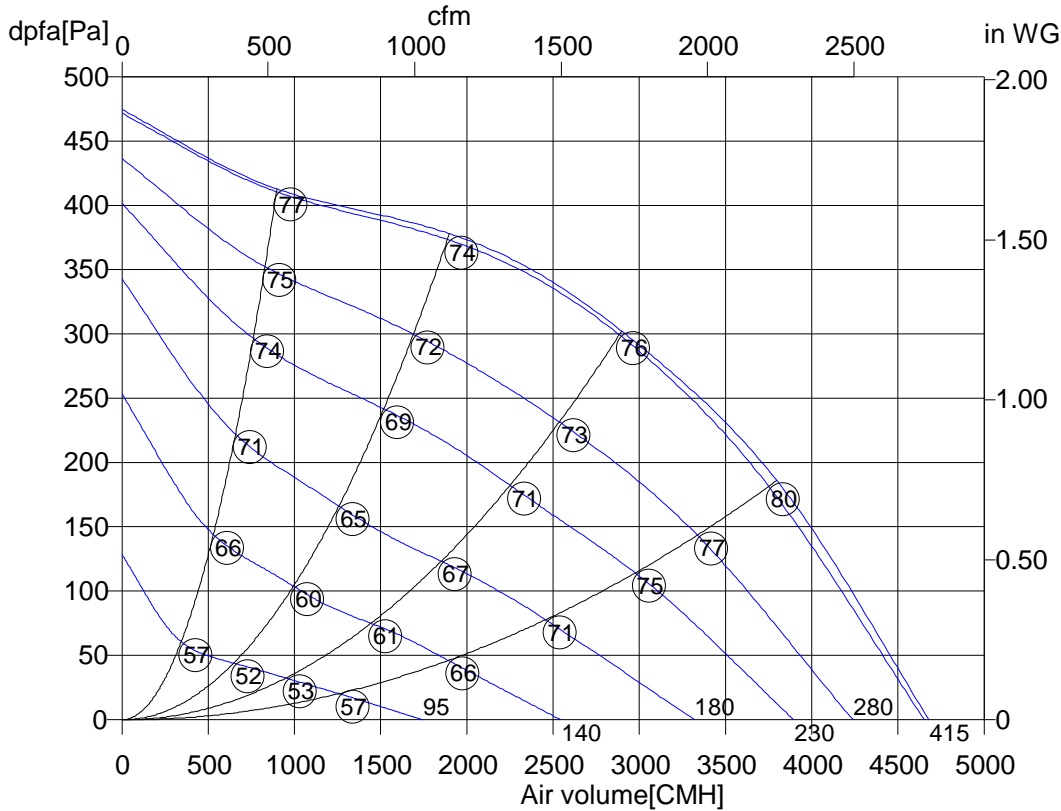
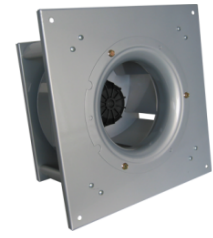


Friday, 20.May 2011

Free running impeller

With backward curved 8-blade aluminium high efficiency impeller



DKH_400-4_W123.5FA	
Art. No.	
U[V]	400 D
f[Hz]	50
P[kW]	0.54
I[A]	1.15
n[1/min]	1340
C[dB]	-
tR[廢]	60
dpst[Pa]	-
Delta I[%]	-
Ia/In	3.1
IP	54
Weight[kG]	9
Wir. diag.	01.006

○ Sound power level
 LwA6[dBA]

