

Dia190x95mm/7.48x3.74inch

360CFM

Motorized Impeller, Backward curved blades



Model No	额定电压 VAC	电压范围 VAC	输入功率 Watt	额定电流 Amp	参考转速 RPM	最大风量 CFM	最大风压 m3/min	最大风压 Inch/H2O mm	噪音 db(A)	PQ Curves
SCE190HAN-11-1**	110	80~135	90	-	3000	360	10.2	1.83 46.48	72	-
SCE190HAN-22-1**	220	180~265	90	-	3000	360	10.2	1.83 46.48	72	-

- ** = "WB" for wire lead type Ball bearing, or "TB" for terminal type Ball bearing
- 信湾保留修改资料与改良电子&机械设计的权利, 无须告知. 资料公差 +-10%

Motor

马达类别: AC-DC Energy Saving EC Motor

马达防护: Electrically protected

IP 防护: IP55, 56 optional request

Mechanical

外框: Aluminum die casting motor frame

叶轮: Plastic impeller

轴承: Maintenance-free two ball bearings

旋转方向: -

接头: Wire leads

重量: 1350g

Electrical

绝缘强度: 500VAC/min. Max. leakage 500mA

转速控制: Optional: PWM, S/C NTC thermister on request

讯号输出: Optional: R/D alarm output, tachometer output

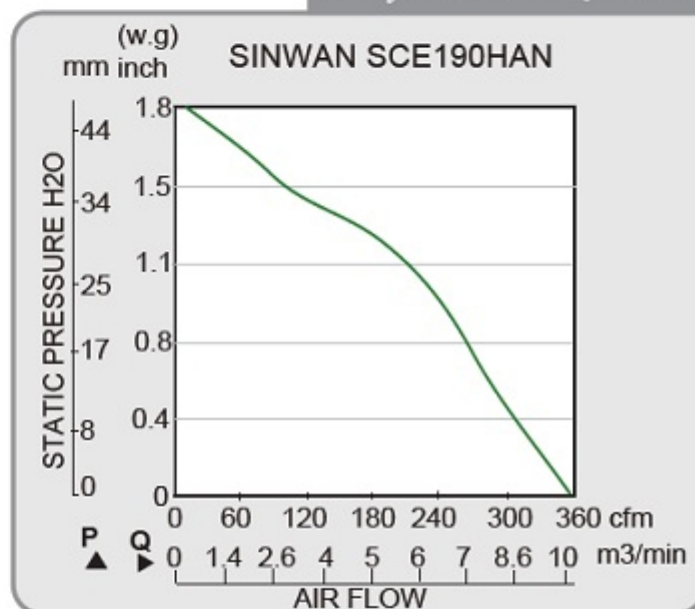
Environment

使用温度: -20~+65C(non-condensing)

保存温度: -40~+90C

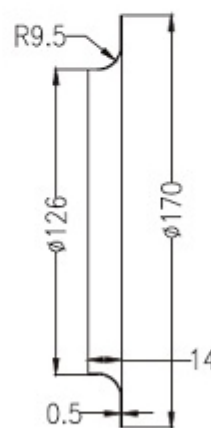
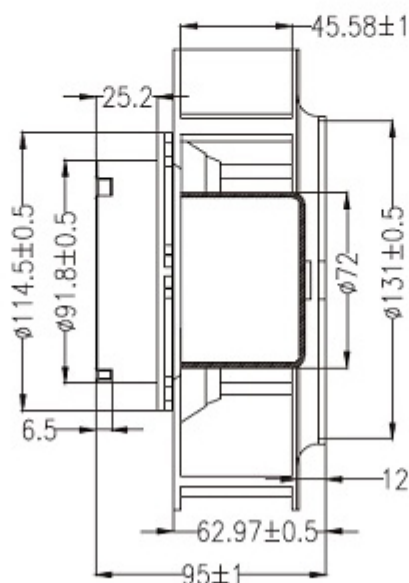
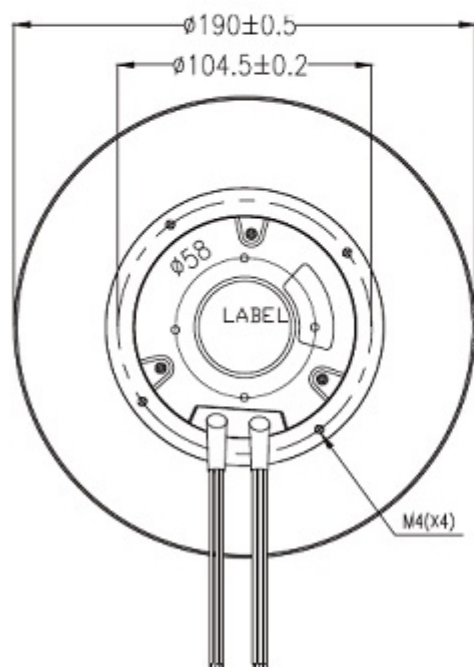
平均预期寿命: L10 formula 90K hours at 35C, 30K hours at 65C

Performance P-Q Curves



- Nomenclature
- R/D Alarm
- F/G Tach
- S/C Function
- PWM Function

Outline Dimensions



相关产品



Inlet nozzle/Duct ring
DR1719SN