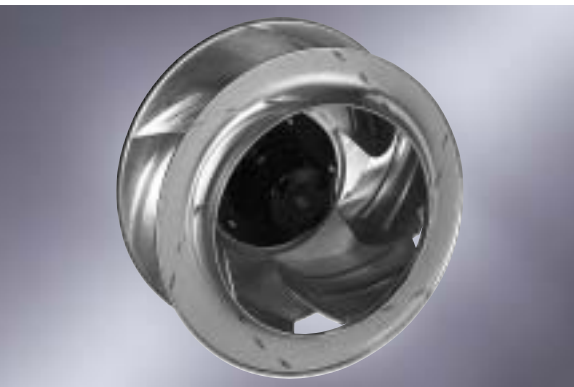


AC centrifugal fans

backward curved, 3-D, Ø 310



- **Material:** sheet aluminium
- **Inlet ring:** data collected via short nozzle (using long nozzle, better air performance and noise figures can be attained)

ebm-papst • Muldingen

Nominal data		Characteristic	Voltage	Frequency	Air flow	Speed/rpm	Power input	Current draw	Capacitor	Noise level	Perm. amb. temp.	Mass
Type	Motor	VAC	Hz	m³/h	min⁻¹	W	A	µF/VDB	dB(A)	°C	kg	
R4D 310-AR18 -01 ⁽¹⁾	M4D068-EC	①	230/400	50	1710	1430	85	0,30	---	62	75	3,3
			230/400	60	1990	1650	115	0,26	---	66	80	
R4D 310-AS18 -01 ⁽¹⁾	M4D068-EC	②	230/400	50	2120	1400	110	0,32	---	60	65	3,4
			230/400	60	2450	1600	150	0,30	---	63	55	
R4E 310-AR06 -01	M4E068-EC	③	230	50	1690	1410	95	0,46	4,0/400	62	70	3,3
			230	60	1950	1650	125	0,56	4,0/400	66	65	
R4E 310-AS06 -01 ⁽²⁾	M4E068-EC	④	230	50	2130	1370	120	0,54	4,0/400	59	85	3,4
			230	60	2380	1530	160	0,71	4,0/400	62	50	
R6E 310-AI04 -01	M6E068-EC	⑤	230	50	1110	950	45	0,21	1,5/450	51	75	3,3
			230	60	1320	1120	55	0,25	1,5/450	55	80	
R6E 310-AJ04 -01	M6E068-EC	⑥	230	50	1400	920	48	0,22	1,5/450	50	75	3,4
			230	60	1640	1070	60	0,27	1,5/450	53	75	

subject to alterations

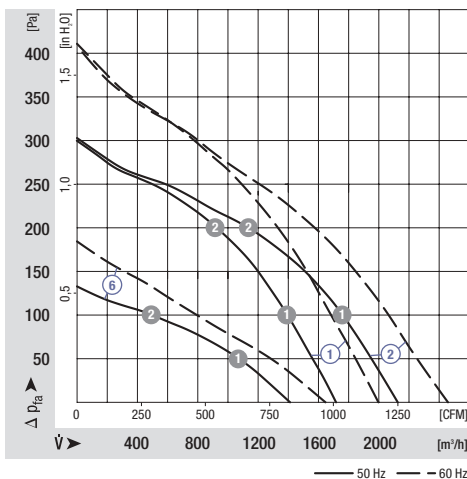
⁽¹⁾ 400 VAC Δ/Y for two speed steps available on request

⁽²⁾ Insulation class "F"

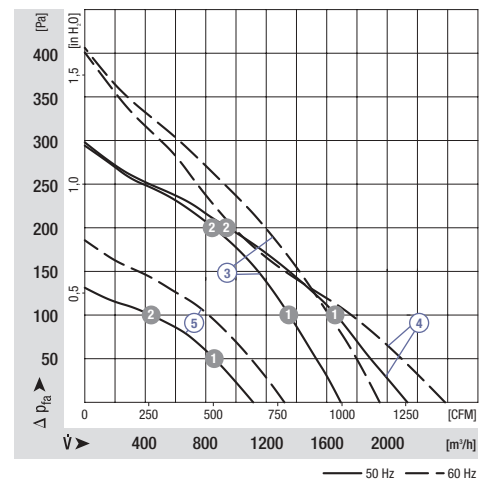
	n [min⁻¹]	P ₁ [W]
① ①	1400	107
① ②	1400	113
② ①	1360	136
② ②	1350	141
⑥ ①	885	53
⑥ ②	900	51

	n [min⁻¹]	P ₁ [W]
③ ①	1370	114
③ ②	1360	118
④ ①	1310	140
④ ②	1320	140
⑤ ①	950	46
⑤ ②	925	50

Characteristics



Characteristics



Dimensions

Type	b	c	g	Inlet ring short	(long)
R4D 310-AR18 -01	104	123	70	31051-2-4013	(31050-2-4013)
R4D 310-AS18 -01	139	154	101	31051-2-4013	(31050-2-4013)
R4E 310-AR06 -01	104	123	70	31051-2-4013	(31050-2-4013)
R4E 310-AS06 -01	139	154	101	31051-2-4013	(31050-2-4013)
R6E 310-AI04 -01	104	123	70	31051-2-4013	(31050-2-4013)
R6E 310-AJ04 -01	139	154	101	31051-2-4013	(31050-2-4013)

