

FEATURES	BENEFITS
<ul style="list-style-type: none"> • Integral terminations • Clicks when connected • Compatibility • CPC thumb latch 	<ul style="list-style-type: none"> • Fewer leak points, shorter assemblies, faster installations • Assurance of a reliable connection • Mates with MC Series couplings • One-hand connection and disconnection
SPECIFICATIONS	
Bodies and valves	Acetal
Internal spring	316 Stainless steel
External springs, pin, latch	Stainless steel
Seal material	Buna-N
Colour	Natural white
Working pressure	Vacuum to 120 PSI (8.3 bar)
Operating temperature	-40°C to +82°C (-40°F to +180°F) continuous



COUPLING BODIES

PIPE THREAD - VALVED MALE THREAD



800

CPC PART NUMBER	RS STOCK NUMBER	THREAD SIZE
cPMCD10-02	7642803	1/8" NPT
cPMCD10-04	7642806	1/4" NPT
UN-VALVED		
cPMC10-020	7642755	1/8" BSPT
cPMC10-040	7642759	1/4" BSPT

PANEL MOUNT - VALVED FERRULESS POLYTUBE FITTING, PTF



800

CPC PART NUMBER	RS STOCK NUMBER	TUBING SIZE	METRIC EQ.
cPMCD12-04	7642800	1/4" OD, .17" ID	6.4 x 4.3 mm
UN-VALVED			
cPMC12-04	7642768	1/4" OD, .17" ID	6.4 x 4.3 mm

PANEL MOUNT - UN-VALVED HOSE BARB



800

CPC PART NUMBER	RS STOCK NUMBER	TUBING SIZE	METRIC EQ.
cPMC16-02	7642761	1/8" ID	3.2 mm ID
cPMC16-04	7642765	1/4" ID	6.4 mm ID

IN-LINE - UN-VALVED HOSE BARB



800

CPC PART NUMBER	RS STOCK NUMBER	TUBING SIZE	METRIC EQ.
cPMC17-01	7642774	1/16" ID	1.6 mm ID
cPMC17-02	7642777	1/8" ID	3.2 mm ID
cPMC17-03	7642771	3/16" ID	4.8 mm ID
cPMC17-04	7642780	1/4" ID	6.4 mm ID

COUPLING INSERTS

Valved versions shown

IN-LINE - VALVED FERRULESS POLYTUBE FITTING, PTF



800

CPC PART NUMBER	RS STOCK NUMBER	TUBING SIZE	METRIC EQ.
cPMCD20-04	7642819	1/4" OD, .17" ID	6.4 x 4.3 mm
UN-VALVED			
cPMC20-04	7642783	1/4" OD, .17" ID	6.4 x 4.3 mm

IN-LINE - VALVED HOSE BARB



800

CPC PART NUMBER	RS STOCK NUMBER	TUBING SIZE	METRIC EQ.
cPMCD22-04	7642812	1/4" ID	6.4 mm ID

PIPE THREAD - UN-VALVED MALE THREAD



800

CPC PART NUMBER	RS STOCK NUMBER	THREAD SIZE
cPMC24-020	7642787	1/8" BSPT
cPMC24-040	7642796	1/4" BSPT

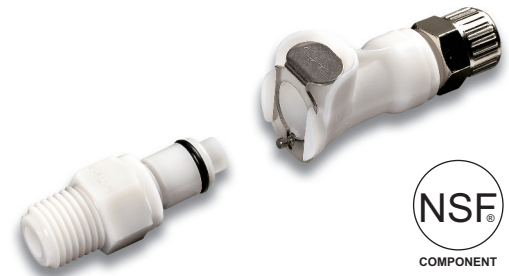
PANEL MOUNT - VALVED HOSE BARB



800

CPC PART NUMBER	RS STOCK NUMBER	TUBING SIZE	METRIC EQ.
cPMCD42-04	7642816	1/4" ID	6.4 mm ID
UN-VALVED			
cPMC42-02	7642799	1/8" ID	3.2 mm ID
cPMC42-04	7642793	1/4" ID	6.4 mm ID

FEATURES	BENEFITS
<ul style="list-style-type: none"> • Integral terminations • Clicks when connected • Compatibility • CPC thumb latch 	<ul style="list-style-type: none"> • One-hand connection and disconnection • Fewer leak points, shorter assemblies, faster installations • Assurance of a reliable connection • Mates with LC Series couplings
SPECIFICATIONS	
Bodies and valves	Acetal
Internal spring	316 Stainless steel
External springs, pin, latch	Stainless steel
Seal material	Buna-N
Colour	Natural White, others available
Working pressure	Vacuum to 120 PSI (8.3 bar)
Operating temperature	-40°C to +82°C (-40°F to +180°F) continuous



COUPLING BODIES

PIPE THREAD - UN-VALVED MALE THREAD



CPC PART NUMBER	RS STOCK NUMBER	THREAD SIZE
cPLC100-040	7640655	1/4" BSPT
cPLC100-060	7640658	3/8" BSPT

PANEL MOUNT - UN-VALVED FERRULESS POLYTUBE FITTING, PTF



CPC PART NUMBER	RS STOCK NUMBER	TUBING SIZE	METRIC EQ.
cPLC120-04	7640652	1/4" OD, .17" ID	6.4 x 4.3 mm
cPLC120-M8	7640668		8 x 6 mm
cPLC120-06	7640661	3/8" OD, .25" ID	9.5 x 6.4 mm
cPLC120-M10	7640664		10 x 8 mm

IN-LINE - VALVED FERRULESS POLYTUBE FITTING, PTF



CPC PART NUMBER	RS STOCK NUMBER	TUBING SIZE	METRIC EQ.
cPLCD130-04	7642727	1/4" OD, .17" ID	6.4 x 4.3 mm
cPLCD130-M8	7642730		8 x 6 mm
cPLCD130-06	7642721	3/8" OD, .25" ID	9.5 x 6.4 mm

UN-VALVED

cPLC130-04	7640677	1/4" OD, .17" ID	6.4 x 4.3 mm
cPLC130-M8	7640683		8 x 6 mm
cPLC130-06	7640670	3/8" OD, .25" ID	9.5 x 6.4 mm
cPLC130-M10	7640674		10 x 8 mm

PANEL MOUNT - UN-VALVED HOSE BARB



CPC PART NUMBER	RS STOCK NUMBER	TUBING SIZE	METRIC EQ.
cPLC160-04	7640686	1/4" ID	6.4 mm ID
cPLC160-05	7640680	5/16" ID	7.9 mm ID
cPLC160-06	7640699	3/8" ID	9.5 mm ID

IN-LINE - UN-VALVED HOSE BARB



CPC PART NUMBER	RS STOCK NUMBER	TUBING SIZE	METRIC EQ.
cPLC170-04	7640692	1/4" ID	6.4 mm ID
cPLC170-05	7640696	5/16" ID	7.9 mm ID
cPLC170-06	7642702	3/8" ID	9.5 mm ID

COUPLING INSERTS

Valved versions shown

IN-LINE - VALVED FERRULESS POLYTUBE FITTING, PTF



CPC PART NUMBER	RS STOCK NUMBER	TUBING SIZE	METRIC EQ.
cPLCD200-04	7642733	1/4" OD, .17" ID	6.4 x 4.3 mm
cPLCD200-M8	7642746		8 x 6 mm
cPLCD200-06	7642737	3/8" OD, .25" ID	9.5 x 6.4 mm
cPLCD200M10	7642749		10 x 8 mm

UN-VALVED

cPLC200-04	7642705	1/4" OD, .17" ID	6.4 x 4.3 mm
cPLC200-M8	7642711		8 x 6 mm
cPLC200-06	7642709	3/8" OD, .25" ID	9.5 x 6.4 mm
cPLC200-M10	7642718		10 x 8 mm

IN-LINE - VALVED HOSE BARB



CPC PART NUMBER	RS STOCK NUMBER	TUBING SIZE	METRIC EQ.
cPLCD220-05	7642743	5/16" ID	7.9 mm ID

UN-VALVED

cPLC220-05	7642715	5/16" ID	7.9 mm ID
------------	---------	----------	-----------

ELBOW - UN-VALVED HOSE BARB



CPC PART NUMBER	RS STOCK NUMBER	TUBING SIZE	METRIC EQ.
cPLC230-04	7642724	1/4" ID	6.4 mm ID

PANEL MOUNT - VALVED HOSE BARB



CPC PART NUMBER	RS STOCK NUMBER	TUBING SIZE	METRIC EQ.
cPLCD420-05	7642752	5/16" ID	7.9 mm ID