

TECHNICAL CHARACTERISTICS

SPECIFICATION

- >Rating: 20mA, 15VDC
- >Contact Resistance:
 - Initial: 100mOHM max.
 - After Life Test: 20HM max.
- >Insulation Resistance: min. 100MOHM at 500VDC
- >Dielectric Strength: 250VAC for 1 minute
- >Stroke: 0.25 +0.05 / - 0.15mm

MATERIAL

- >Cover: Copper alloy
- >Frame: LCP UL 94V-0, color Black
- >Contact: Stainless Steel with silver cladding
- >Terminal: Copper alloy with silver plating
- >Tape: Polyimide tape

SOLDERING INFORMATION

- >Terminal in SMD version
- >Reflow soldering according to JEDEC J-STD-020D
- >Hand soldering under 350°C for 3 sec. max

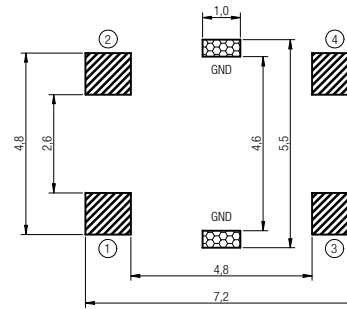
ENVIRONMENTAL

- >Storage condition: -40°C ~ +85°C
- >Operation condition: -40°C ~ +85°C
- >Compliance: Lead Free, ROHS, Reach

PACKAGING INFORMATION

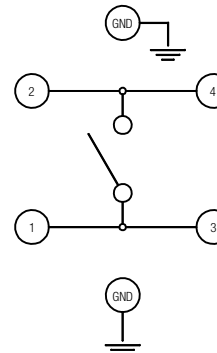
- >Tape & Reel

PN	Force	Color of Stem	Life cycle
431 181 008 816	160g ± 50gf	No actuator	1.000.000
431 151 008 826	260g ± 50gf	No actuator	200.000

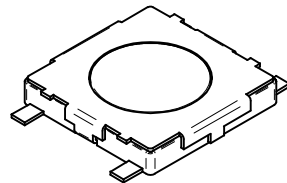
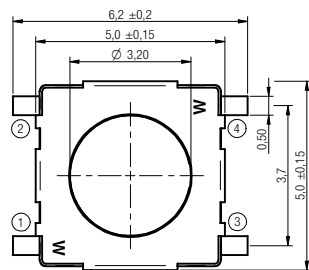
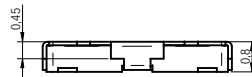
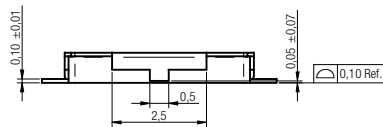


P.C.B. MOUNTING PLAN

Grounded Terminal
can be effective even if not soldered



SCHEMATIC



Scale - 5:1

		Projection		GENERAL TOLERANCE .x = +/- 0,2 .xx = +/- 0,15		Basic material	
				Date	Name	DESCRIPTION	
				Drawn	10-07-13	SwTact	
				Checked		WS-TSS 5x5mm Tact Switch with ground terminal, SMD version	
				Würth Elektronik eiCan		Scale	5:1
						Position	
						Drawing.- No. 4311x10088x6	
						SIZE	
						A4	
REV	FILE	DATE	BY	EDV NO	4311x10088x6.dft		System Solid Edge V20