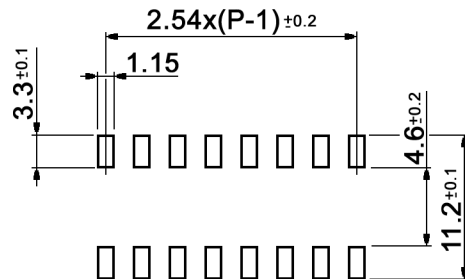
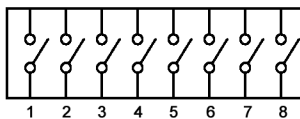


xx	Poles	A
01	1	2.50
02	2	5.04
03	3	7.58
04	4	10.12
05	5	12.66
06	6	15.20
07	7	17.74
08	8	20.28
09	9	22.82
10	10	25.36
12	12	30.43

P.C.B. LAYOUT



WIRING DIAGRAM

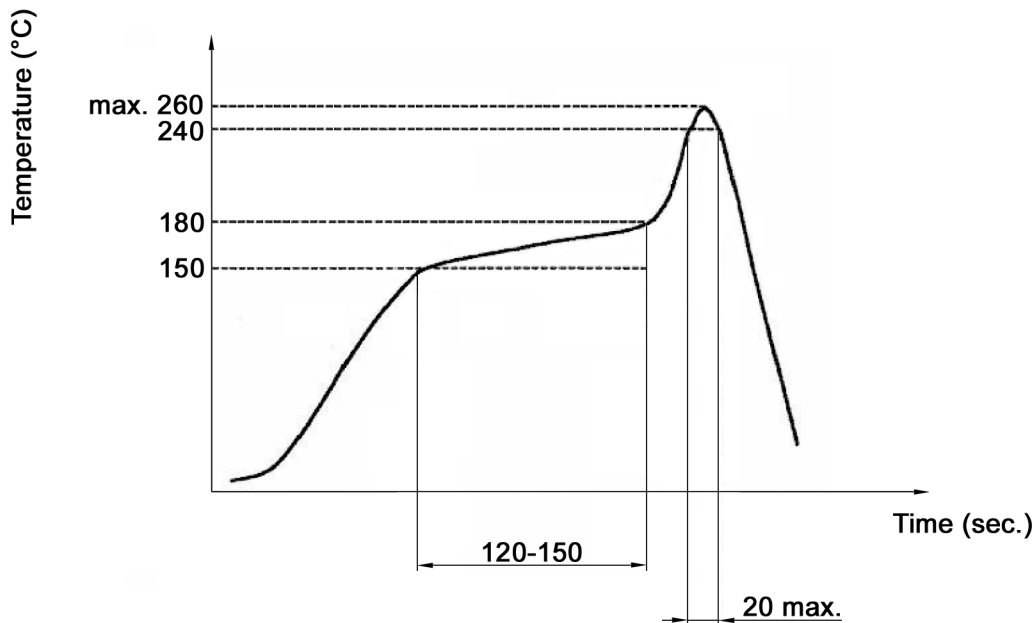


Tolerances: 0-1: ±0.03mm 1-4: ±0.05mm 4-16: ±0.07mm 16-63: ±0.10mm	Date	Name	<h1>SBS 610xx T</h1>
	12/13	dr	
Specifications	01/14	dr	<h2>30 29 92</h2>
Modifications	Date	Name	
			Page 1/4

**Specifications:**

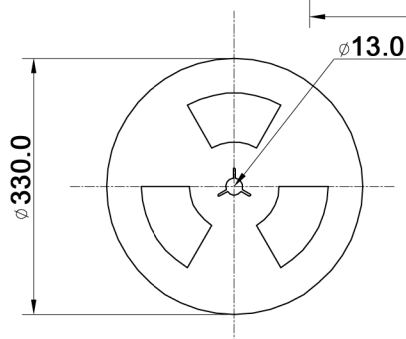
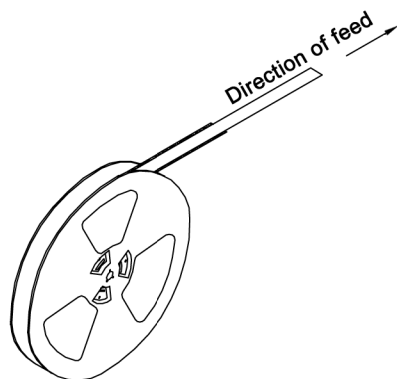
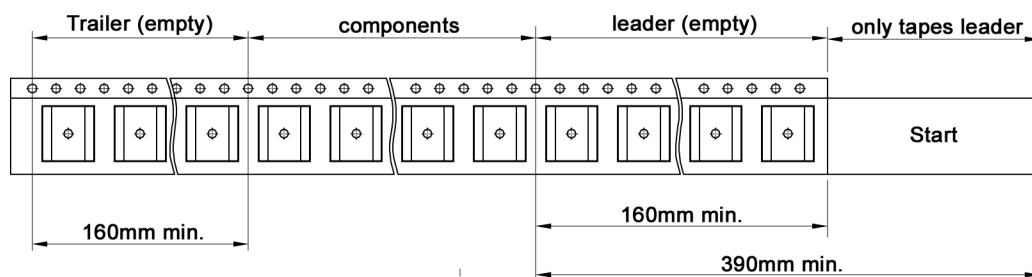
**Contact rating:** switching: 25mA, 24V DC  
 non-switching: 100mA, 50V  
**Contact resistance:** 50mOhm max.  
**Insulation resistance:** 1000MOhm min. at 100V DC  
**Dielectric strength:** 500V DC for 1 minute  
**Operating temperature:** -40°C to +85°C  
**Storage temperature:** -40°C to +85°C  
**Mechanical life:** 5 000 cycles  
**Operating force:** 800gf max.  
**Material:** all material used UL94V-0 grade fire retardant plastic  
**Movable contact.:** BeCu, gold plated over nickel  
**Fixed contact:** brass, gold plated over nickel  
**Terminal:** brass, tin plated over nickel

**Soldering conditions:**



Tolerances: 0-1: ±0.03mm 1-4: ±0.05mm 4-16: ±0.07mm 16-63: ±0.10mm	Date	Name	<h1>SBS 610xx T</h1>
	12/13	dr	
			<h2>knitter-switch 30 29 92</h2>
Modifications	Date	Name	Page 2/4

Packaging:



Part No.	Pcs. / reel	Poles	a	b	c	d	e
SBS 61001 T	2000	1	3.0	10.0	8.0	11.50	24.0
SBS 61002 T	1300	2	5.6	10.0	12.0	11.50	24.0
SBS 61003 T	1000	3	10.0	8.00	16.0	7.50	16.0
SBS 61004 T	1000	4	10.0	10.60	16.0	11.50	24.0
SBS 61005 T	1000	5	10.0	13.10	16.0	11.50	24.0
SBS 61006 T	1000	6	10.0	15.70	16.0	11.50	24.0
SBS 61007 T	1000	7	10.0	18.18	16.0	14.20	32.0
SBS 61008 T	1000	8	10.0	20.70	16.0	14.20	32.0
SBS 61009 T	1000	9	10.0	23.26	16.0	20.25	44.0
SBS 61010 T	1000	10	10.0	25.80	16.0	20.25	44.0
SBS 61012 T	1000	12	10.0	30.90	16.0	20.25	44.0



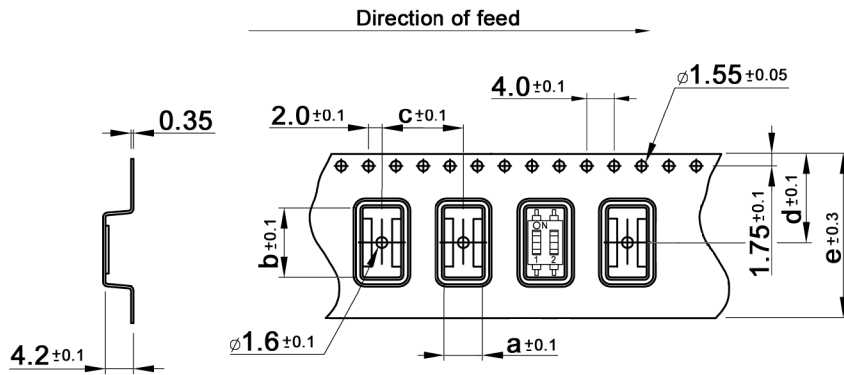
Tolerances: 0-1: ±0.03mm 1-4: ±0.05mm 4-16: ±0.07mm 16-63: ±0.10mm	Date	Name	<h1>SBS 610xx T</h1>
	12/13	dr	
Modifications	Date	Name	

**knitter-switch**

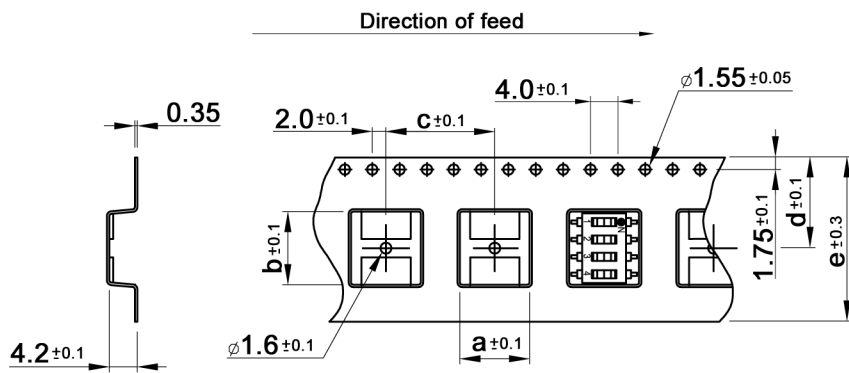
30 29 92

Page  
3/4

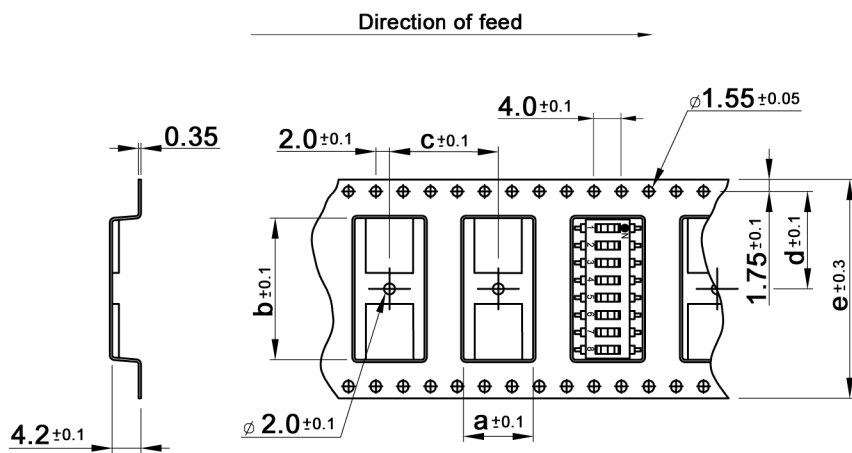
SBS 61001 T, SBS 61002 T:



SBS 61003 T...SBS 61006 T:



SBS 61007 T...SBS 61012 T:



Tolerances: 0-1: ±0.03mm 1-4: ±0.05mm 4-16: ±0.07mm 16-63: ±0.10mm	Date	Name	<h1>SBS 610xx T</h1>
	12/13	dr	
Modifications	Date	Name	
<b>knitter-switch</b>			<h2>30 29 92</h2>
			Page 4/4