

8 Port PCI Express Low Profile Serial Adapter Card

PEX8S950LP



*actual product may vary from photos

DE: Bedienungsanleitung - de.startech.com

FR: Guide de l'utilisateur - fr.startech.com

ES: Guía del usuario - es.startech.com

IT: Guida per l'uso - it.startech.com

NL: Gebruiksaanwijzing - nl.startech.com

PT: Guia do usuário - pt.startech.com

For the most up-to-date information, please visit: www.startech.com

FCC Compliance Statement

This equipment has been tested and found to comply with the limits for a Class B digital device, pursuant to part 15 of the FCC Rules. These limits are designed to provide reasonable protection against harmful interference in a residential installation. This equipment generates, uses and can radiate radio frequency energy and, if not installed and used in accordance with the instructions, may cause harmful interference to radio communications. However, there is no guarantee that interference will not occur in a particular installation. If this equipment does cause harmful interference to radio or television reception, which can be determined by turning the equipment off and on, the user is encouraged to try to correct the interference by one or more of the following measures:

- Reorient or relocate the receiving antenna.
- Increase the separation between the equipment and receiver.
- Connect the equipment into an outlet on a circuit different from that to which the receiver is connected.
- Consult the dealer or an experienced radio/TV technician for help.

Use of Trademarks, Registered Trademarks, and other Protected Names and Symbols

This manual may make reference to trademarks, registered trademarks, and other protected names and/or symbols of third-party companies not related in any way to StarTech.com. Where they occur these references are for illustrative purposes only and do not represent an endorsement of a product or service by StarTech.com, or an endorsement of the product(s) to which this manual applies by the third-party company in question. Regardless of any direct acknowledgement elsewhere in the body of this document, StarTech.com hereby acknowledges that all trademarks, registered trademarks, service marks, and other protected names and/or symbols contained in this manual and related documents are the property of their respective holders.

Table of Contents

Introduction	1
Packaging Contents	1
System Requirements.....	1
Hardware Guide	2
Installation	5
Software Installation.....	5
Configuration	6
Specifications	7
Connector Pin Assignments.....	7
General Specifications.....	8
Technical Support	9
Warranty Information	9

Introduction

The PEX8S950LP 8 Port PCI Express Low Profile Serial Adapter Card with dongle cables included offers 8 RS 232 Serial connections via a single PCI Express slot, with data rates up to 921Kbps. Perfect for use with a broad variety of serial peripherals including printers, scanners, industrial controls and more.

A complete 8 port RS232 Serial card solution, the adapter includes 2 breakout cables – each with 4 DB9 connectors for a total of 8 ports. The perfect choice for adding several additional ports when space is at a premium, the serial adapter card is designed to fit in small/micro form factor computer cases. Plus, this versatile card also includes 2 standard profile brackets for compatibility with full size cases.

Backed by a StarTech.com Lifetime warranty and free lifetime technical support.

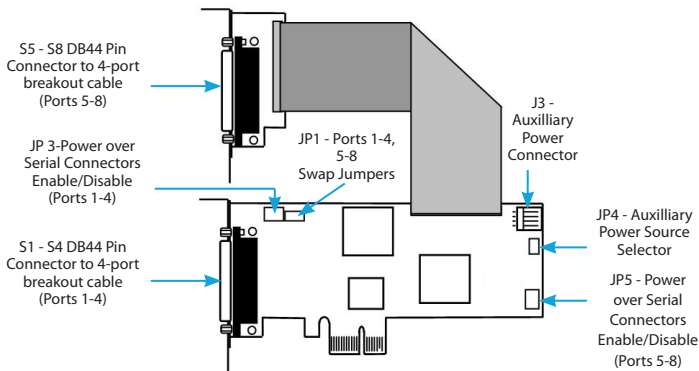
Packaging Contents

- 8 Port PCI Express Serial Card
- 2x Breakout Cables
- 2x Standard Brackets
- Driver CD
- Instruction Manual

System Requirements

- A PC with an available PCI Express slot
- Windows® 7 (32/64bit)/ Vista(32/64)/ XP(32/64)/ 2000/ 98SE/ CE 5.0 Windows® Server 2008 R2/ 2003(32/64) Linux 2.4.x/ 2.6.x

Hardware Guide



JP1 - COM Ports Swapping Selector - Used to swap Serial Ports 1-4 and 5-8. Unless necessary, maintain default setting.

A0	
A1	
B0	
B1	

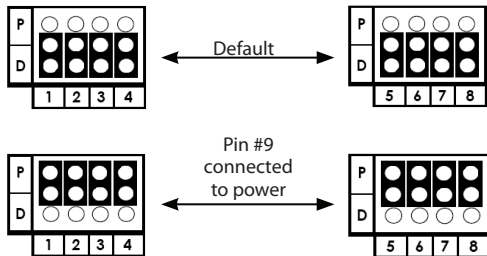
No Swapping.
The COM ports
will be mapped
from S1 to S8 as
normal.

The COM ports will be
swapped as follows,
where S designates the
port number:

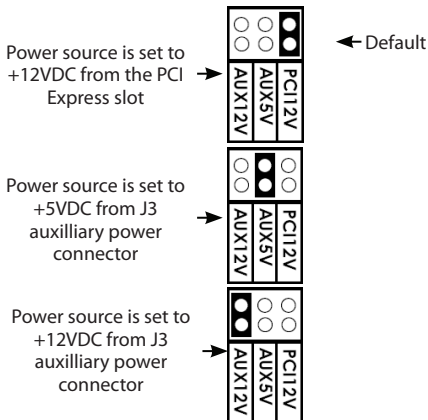
S1 ↔ S5
S2 ↔ S6
S3 ↔ S7
S4 ↔ S8

A0	
A1	
B0	
B1	

JP3, JP5 - External Power Enable/Disable Selector - JP3 is used to set pin #9 of DB9 connectors S1-S4 to either the RI (Ring Indicator Signals) or the 5V/12V DC Power (selected by JP4). JP5 performs the same function for DB9 connectors S5-S8. When the jumper is set to the “P” position, it will output the DC power over pin #9; if set to the “D” position, pin #9 will be connected to the normal RI signal, based on the RS232 standard.



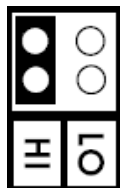
JP4 - Power Source Selector - Used to select DC power for pin #9 of the DB9 connectors. This can be set from PCI Express 12V or 12V (or 5V) from the 4-pin auxiliary power connector.



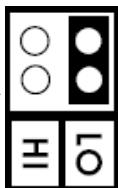
JP2 - Baud Rate Selector - Used to control the baud rate clock input of the UARTs. There are two positions:

Lo (factory default) - The clock is set to 1.8432MHz, with a maximum baud rate of 115.2Kbps.

Hi - The clock is set to 14.7456MHz, with a maximum baud rate of 921.6Kbps. Please see the section entitled **Configuration** for more information.



Baud Rate Clock
set to 1.8432MHz
(Low Speed)



Baud Rate
Clock set to
14.7456MHz
(High Speed)

Installation



WARNING! PCI Express cards, like all computer equipment, can be severely damaged by static electricity. Be sure that you are properly grounded before opening your computer case or touching your card. StarTech.com

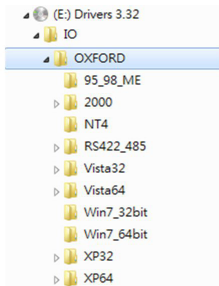
recommends that you wear an anti-static strap when installing any computer component. If an anti-static strap is unavailable, discharge yourself of any static electricity build-up by touching a large grounded metal surface (such as the computer case) for several seconds. Also be careful to handle the card by its edges and not the gold connectors.

1. Turn OFF the computer power before installation.
2. Remove the chassis cover from your computer.
3. Locate an unused PCI Express slot and remove the corresponding slot cover from rear panel of the computer chassis. Retain the screw (if applicable) used to hold the slot cover in place.
4. Align the PCI Express card with the unused PCI Express expansion slot. Applying pressure evenly across the top edge of the expansion card, firmly but gently insert the card into the slot, ensuring that the card is properly aligned with the rear panel slot.
5. Secure the card to the motherboard and rear chassis using the screw removed in step 3 (if necessary). Secure the additional serial port provided by the daughter board (smaller circuit board to an adjacent rear bracket).
6. Replace the chassis cover (removed in step 2).
7. Connect the 4-port breakout (octopus) cables to the ports provided by PEX8S950LP.
8. Power on the computer. Once the computer has been rebooted, the operating system will detect that the PCI Express card has been installed and request driver installation, detailed in the next section.

Software Installation

To install the necessary drivers for use with PEX8S950LP, simply insert the Driver CD into the CD/DVD-ROM drive on the host computer, and follow the prompts provided by the operating system. When asked to specify the location of the files, please select Browse and guide the Hardware Wizard to the exact folder location where the driver is located. (E:\IO\OXFORD\NT4 folder where E: is the CD/DVD-ROM drive).

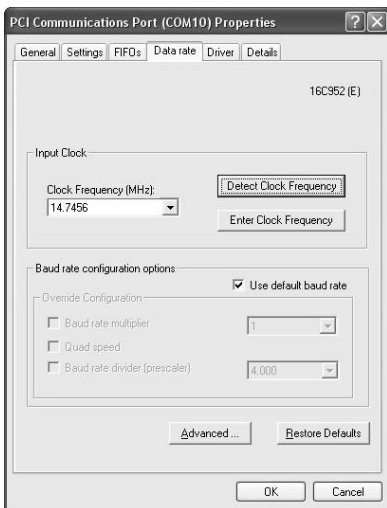
Allowing Windows to search for the file may result in the incorrect file being installed, as the Driver CD contains several versions of the necessary software. As such, please pay particular attention when designating the folder from which to install the driver files.



Configuration

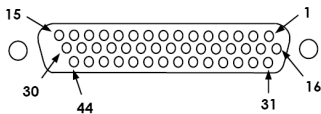
Once installation is complete, you will be able to configure the port(s) provided by the card, as you would any other serial port. To do so, click on **Start**, then right-click on **Manage** to open the Computer Management window.

1. In the left pane, click on Device Manager. Here, you should see two listings for PCI Communications Port as illustrated below.
2. Right-click on the first listing and select properties, to launch the PCI Communications Port Properties window.
3. Click on the Data Rate tab, and click on Detect Clock Frequency to automatically detect the port data transfer capability, then select OK.
4. Repeat steps 1-3 to configure the second added port.



Specifications

Connector Pin Assignments



Port 1		Port 2		Port 3		Port 4	
42	DCD1	39	DCD2	35	DCD3	31	DCD4
14	RXD1	10	RXD2	6	RXD3	2	RXD4
13	TXD1	9	TXD2	5	TXD3	1	TXD4
29	DTR1	25	DTR2	21	DTR3	17	DTR4
44	GND	41	GND	37	GND	33	GND
30	DSR1	26	DSR2	22	DSR3	18	DSR4
15	RTS1	11	RTS2	7	RTS3	3	RTS4
28	CTS1	24	CTS2	20	CTS3	16	CTS4
43	RI1(*)	40	RI2(*)	36	RI3(*)	32	RI4(*)

General Specifications

Type	Specifications
Connectors	DB44 Female
Cables	DB44M-to-DB9MX4 Octopus type x2
Bus Interface	PCI Express x 1
Number of Ports	8
RS-232 Signals	TXD, RXD, RTS, CTS, DTR, DSR, DCD, GND
Baud Rate	110 bps to 921.6Kbps
Data Bits	5,6,7,8,9
Stop Bits	1, 1.5, 2
I/O address /IRQ	Plug-and-Play (various)
Parity	None, Even, Odd, 1, 0
Flow Control	RTS/CTS, XON/XOFF
Power Requirement	3.3V/800mA
Operating Temperature	0 to 55C(32 to 132F)
Operating Humidity	5 to 95% RH
Storage Temperature	-20 to 85C (-4 to 185F)
Chipset ID	Oxford OXMPCI9S2
OS Compatibility	Windows® 7 (32/64bit)/ Vista(32/64)/ XP(32/64)/ 2000/ 98SE/ CE 5.0 Windows® Server 2008 R2/ 2003(32/64) Linux 2.4.x/ 2.6.x

Technical Support

StarTech.com's lifetime technical support is an integral part of our commitment to provide industry-leading solutions. If you ever need help with your product, visit www.startech.com/support and access our comprehensive selection of online tools, documentation, and downloads.

For the latest drivers/software, please visit www.startech.com/downloads

Warranty Information

This product is backed by a lifetime warranty.

In addition, StarTech.com warrants its products against defects in materials and workmanship for the periods noted, following the initial date of purchase. During this period, the products may be returned for repair, or replacement with equivalent products at our discretion. The warranty covers parts and labor costs only. StarTech.com does not warrant its products from defects or damages arising from misuse, abuse, alteration, or normal wear and tear.

Limitation of Liability

In no event shall the liability of StarTech.com Ltd. and StarTech.com USA LLP (or their officers, directors, employees or agents) for any damages (whether direct or indirect, special, punitive, incidental, consequential, or otherwise), loss of profits, loss of business, or any pecuniary loss, arising out of or related to the use of the product exceed the actual price paid for the product. Some states do not allow the exclusion or limitation of incidental or consequential damages. If such laws apply, the limitations or exclusions contained in this statement may not apply to you.

Hard-to-find made easy. At StarTech.com, that isn't a slogan. It's a promise.

StarTech.com is your one-stop source for every connectivity part you need. From the latest technology to legacy products — and all the parts that bridge the old and new — we can help you find the parts that connect your solutions.

We make it easy to locate the parts, and we quickly deliver them wherever they need to go. Just talk to one of our tech advisors or visit our website. You'll be connected to the products you need in no time.

Visit www.startech.com for complete information on all StarTech.com products and to access exclusive resources and time-saving tools.

StarTech.com is an ISO 9001 Registered manufacturer of connectivity and technology parts. StarTech.com was founded in 1985 and has operations in the United States, Canada, the United Kingdom and Taiwan servicing a worldwide market.