

MP-6100

User's Manual

Edition 1.0

2009/8/25



Copyright

Copyright 2009 all rights reserved. This document is copyrighted and all rights are reserved. The information in this document is subject to change without prior notice to make improvements to the products.

This document contains proprietary information and protected by copyright. No part of this document may be reproduced, copied, or translated in any form or any means without prior written permission of the manufacturer.

All trademarks and/or registered trademarks contains in this document are property of their respective owners.

Disclaimer

The company shall not be liable for any incidental or consequential damages resulting from the performance or use of this product.

The company does not issue a warranty of any kind, express or implied, including without limitation implied warranties of merchantability or fitness for a particular purpose.

The company has the right to revise the manual or include changes in the specifications of the product described within it at any time without notice and without obligation to notify any person of such revision or changes.

Trademark

All trademarks are the property of their respective holders.

Any questions please visit our website at <http://www.commell.com.tw>.

Packing List:

Hardware:

MP-6100 Mini-PCI Capture Card x1

Cable kit:

Video Cable



4-ch BNC Cable x 1
(OALBNCE4)



D-SUB 9 Cable x 1
(OALDB9-H15)

Audio Cable (option)



Audio Cable x 1 (option)
(OALDB9-AUD4)



Dual DB9 Cable x 1 (option)
(OAL2DB9-H15)

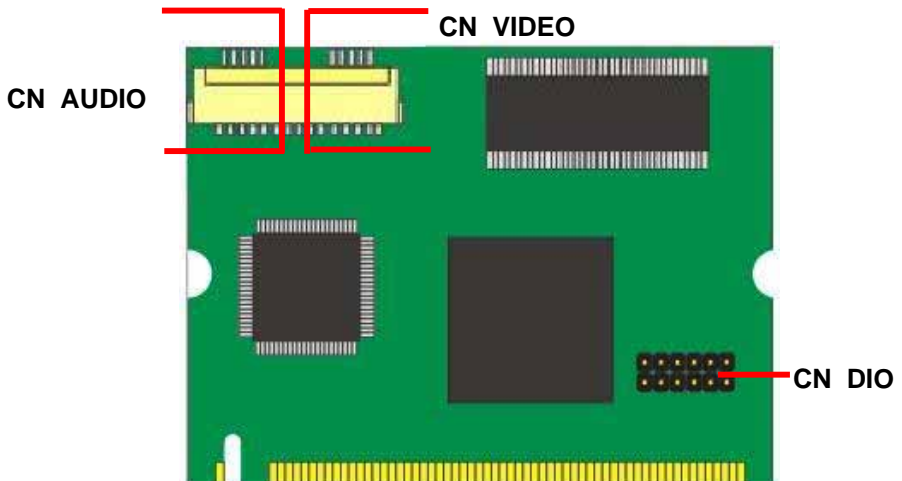
CD Content:

Drivers & User's Manual

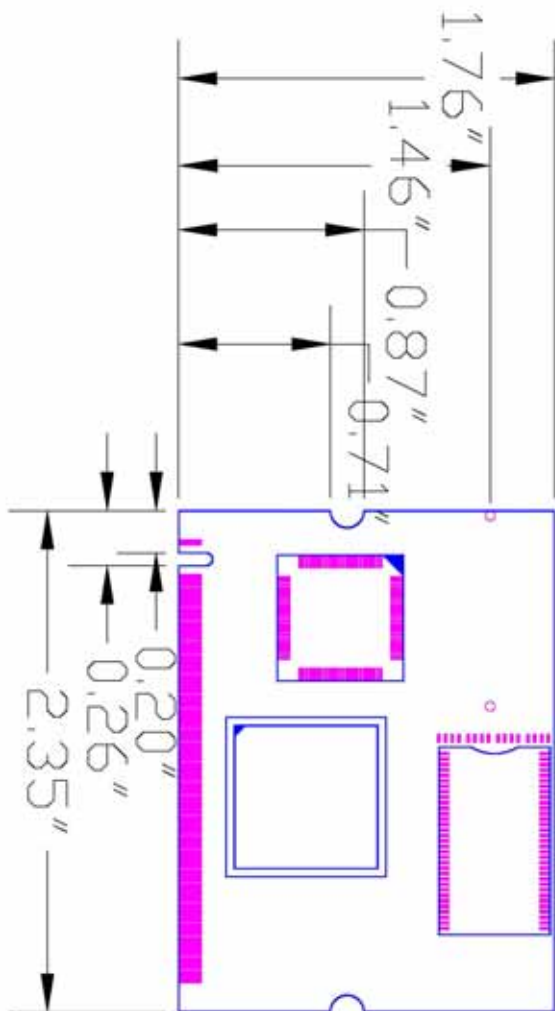
1.0 <Product Specification>

General Specification	
Form Factor	Mini-PCI Type-III B
Compression Format	H.264 Hardware compression technology
Cable kit	1 x 15-pin Hirose to D-sub 9 Cable 1 x D-sub 9 to 4 x BNC connector Cable 1 x 15-pin Hirose to Dual D-sub 9 Cable(option)-Audio 1 x D-sub 9 to 4 channel Audio Cable(option)-Audio
Features	Display Rate: 1-ch : Total 30 fps / D1 resolution 4-ch : Total 120 fps / CIF resolution Recording Rate: 1-ch : Total 30 fps / D1 resolution 4-ch : Total 120 fps / CIF resolution
GPIO	8-bit GPIO interface
OS Support	Windows XP , Linux (Ubuntu 8.04 or Kernel 2.6.27)
Software	Windows SDK (Directshow support) , Linux SDK , Network Streaming SDK
Dimensions (L x W)	59.75mm x 44.6mm

1.1 <Component Placement>



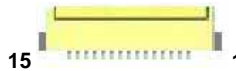
1.2 <Mechanical Drawing>



1.3 <Connector Reference>

Connector: CN_AV

Type: DF14-15S-1.25C Hirose



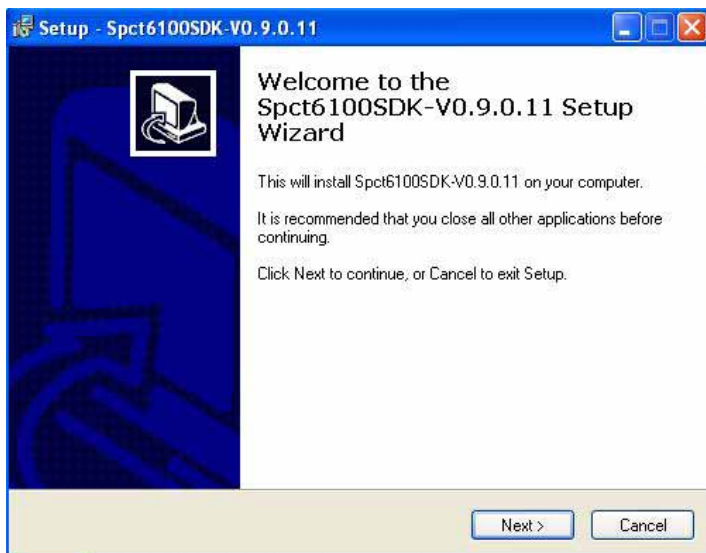
Pin	Description	Pin	Description
1	Video1	2	GND
3	Video2	4	GND
5	Video3	6	GND
7	Video4	8	GND
9	Audio1	10	GND
11	Audio2	12	GND
13	Audio3	14	GND
15	Audio4		

1.4 <Driver Setting>

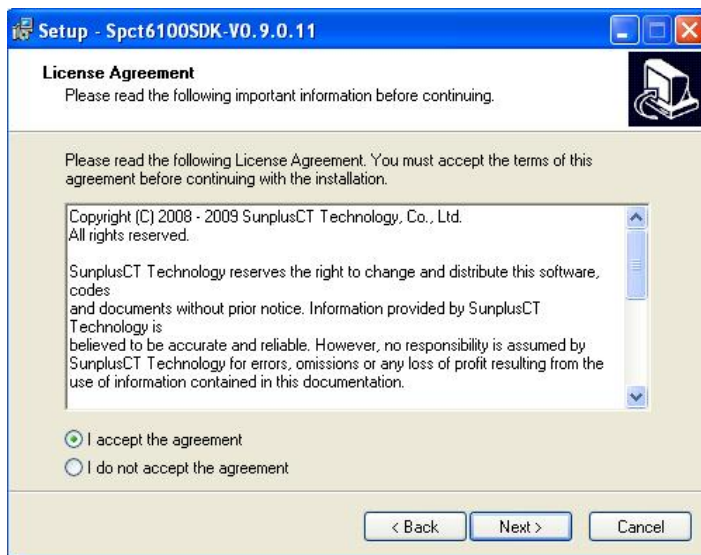
1. Insert the driver CD into your system's CD-ROM to Set up MP-6100
[Spct6100_Directshow_SDK_V0.9.0.11.exe](#).

(E:/Driver/MP-6100/Spct6100_Directshow_SDK_V0.9.0.11.exe)

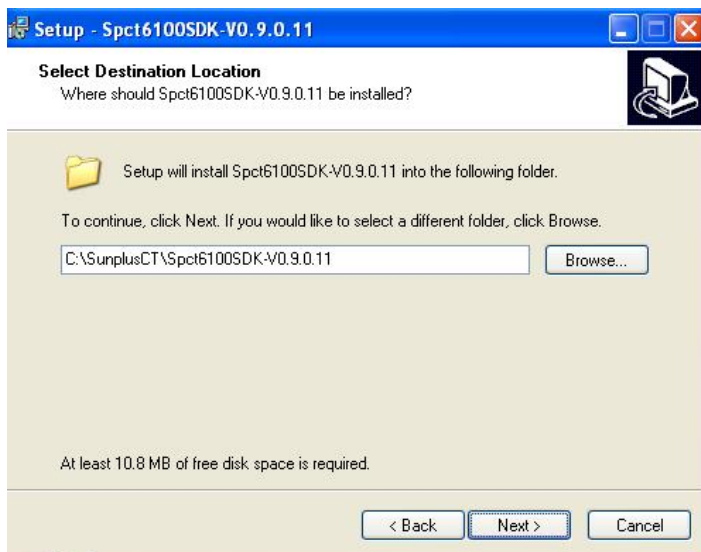
Please select "Next" to continue.



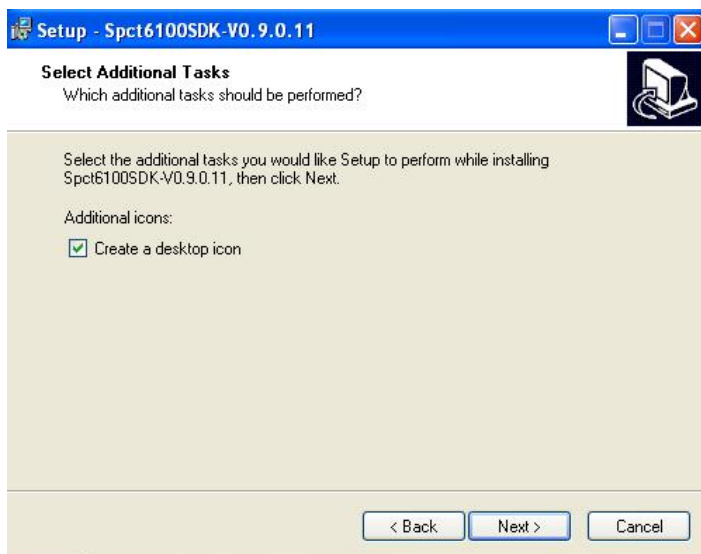
2. Please read the following License Agreement. Press the Page Down key to see the rest of agreement and click “Next” to continue the installation.



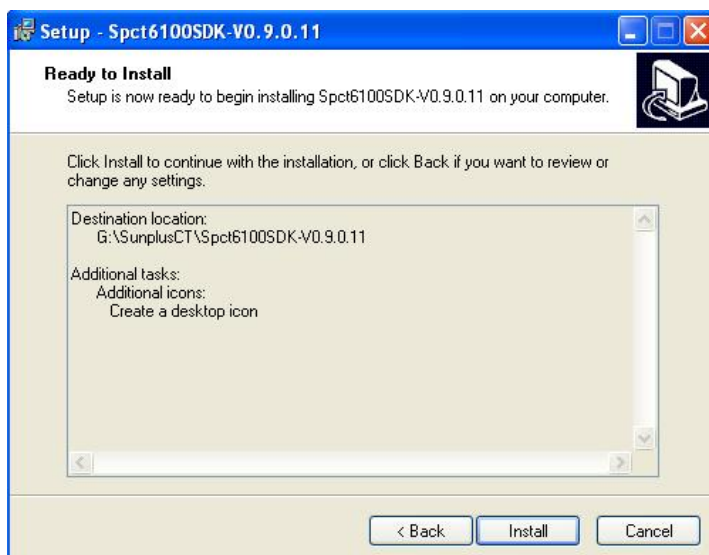
3. Please select file location. Then, click “Next”.



4. Please select "Next" in this page.



5. Please select "Install" in this page.



6. Please Click “Continue Anyway”, when you see the following message.



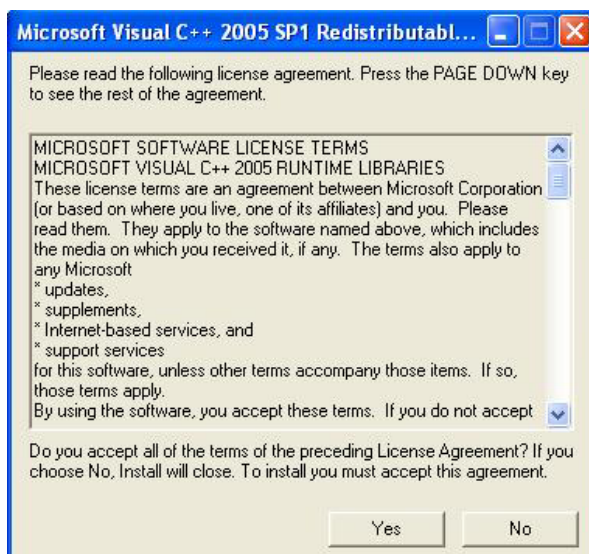
7. Please Click “Continue Anyway”, when you see the following message.



8. Please click “Finish” to complete the installation.



9. Please click “Yes” to complete the installation and restart Windows or your computer.



1.5 <Sample Program>

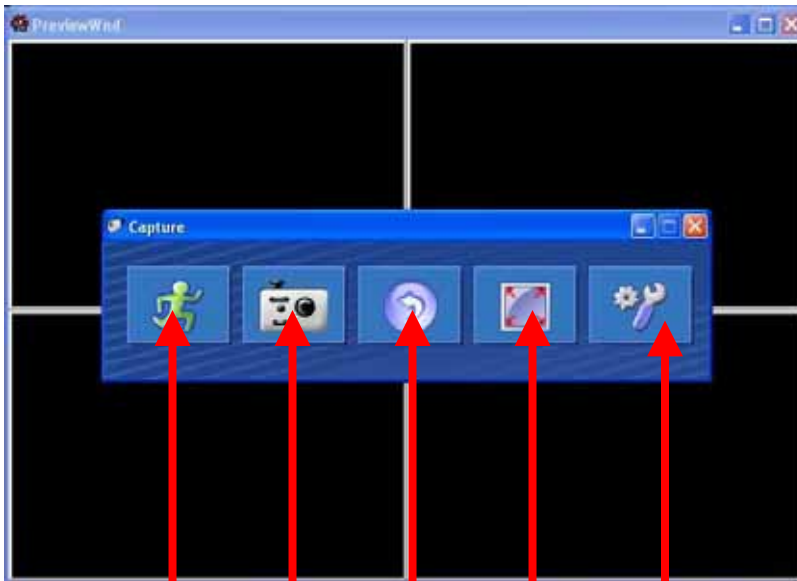
1. When you completed hardware & software installation, you can use COMMELL “Surveillance-V0.9.0.11” sample program to test.

(You can find Surveillance-V0.9.0.11.exe on desktop.)



Surveillance-V0
.9.0.11

2. Please double –click “Surveillance-V0.9.0.11.exe”, It'll pops up as following. Then Please Push “Run” on the Menu.



Run

Snap

Paybac

Fullscreen

Setting

Contact Information

Any advice or comment about our products and service, or anything we can help you please don't hesitate to contact with us. We will do our best to support you for your products, projects and business.

Taiwan Commate Computer Inc.

Address	19F, No. 94, Sec. 1, Shin Tai Wu Rd., Shi Chih Taipei Hsien, Taiwan
TEL	+886-2-26963909
FAX	+886-2-26963911
Website	http://www.commell.com.tw
E-Mail	info@commell.com.tw (General Information) tech@commell.com.tw (Technical Support)

Commell is the trademark of Taiwan Commate Computer INC.