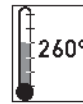


Detector Switches



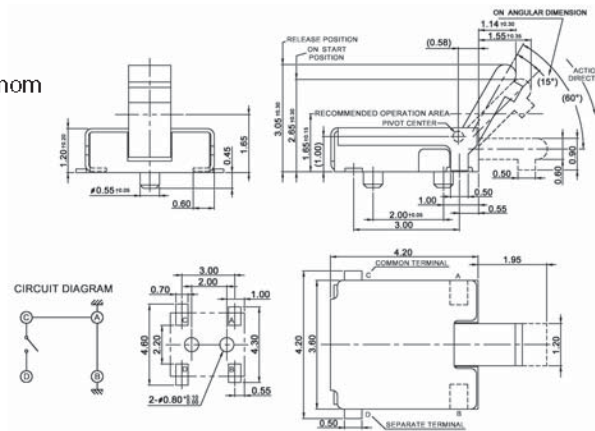
Specifications:

Contact rating:	5V DC, 10 mA and 3.6V, 100 mA
Contact resistance:	< 1 Ω
Insulation resistance:	> 100 MΩ
Dielectric strength:	100 V, 50 Hz for the duration of 1 minute
Operating temperature:	-40 °C to +85 °C
Operating force:	≤ 0.4 N
Mechanical life:	minimum 100 000 operations
Material:	Contacts: copper-alloy, gold-plated Terminals: brass, silver-plated Case and actuator: HTN, black Cover: stainless steel

Models: Switching functions

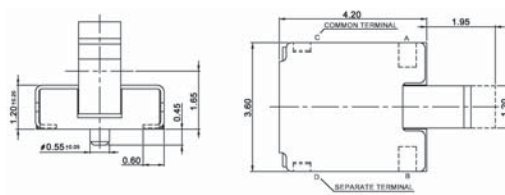
DTS 205 CP-T

off – mom



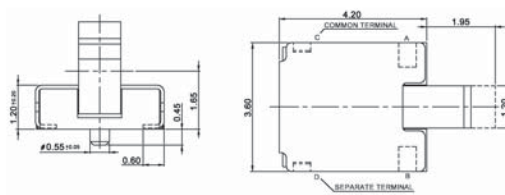
DTS 205 C- T

off – mom as above, but without posts



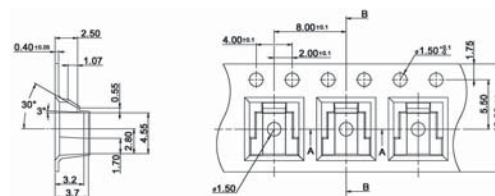
DTS 205 CPJ-T

off – mom



DTS 205 CJ-T

off – mom as above, but without posts



Packing: 2300 pcs/reel

