

"Half-Bridge" IGBT INT-A-PAK (Ultrafast Speed IGBT), 100 A



INT-A-PAK

FEATURES

- Generation 4 IGBT technology
- Ultrafast: Optimized for high speed 8 to 40 kHz in hard switching, > 200 kHz in resonant mode
- Very low conduction and switching losses
- HEXFRED® antiparallel diodes with ultrasoft recovery
- Industry standard package
- UL approved
- Totally lead (Pb)-free
- Designed and qualified for industrial level


**RoHS
COMPLIANT**

PRODUCT SUMMARY

V_{CES}	1200 V
I_C DC	182 A
$V_{CE(on)}$ at 100 A, 25 °C	2.25 V

BENEFITS

- Increased operating efficiency
- Direct mounting to heatsink
- Performance optimized for power conversion: UPS, SMPS, welding
- Lower EMI, requires less snubbing

ABSOLUTE MAXIMUM RATINGS

PARAMETER	SYMBOL	TEST CONDITIONS	MAX.	UNITS
Collector to emitter voltage	V_{CES}		1200	V
Continuous collector current	I_C	$T_C = 25\text{ °C}$	182	A
		$T_C = 93\text{ °C}$	100	
Pulsed collector current	I_{CM}	Repetitive rating; $V_{GE} = 20\text{ V}$, pulse width limited by maximum junction temperature	200	
Peak switching current See fig. 17	I_{LM}		200	
Peak diode forward current	I_{FM}		200	
Gate to emitter voltage	V_{GE}		± 20	
RMS isolation voltage	V_{ISOL}	Any terminal to case, $t = 1\text{ minute}$	2500	
Maximum power dissipation	P_D	$T_C = 25\text{ °C}$	520	W
		$T_C = 85\text{ °C}$	270	
Operating junction temperature range	T_J		- 40 to + 150	°C
Storage temperature range	T_{Stg}		- 40 to + 125	

ELECTRICAL SPECIFICATIONS ($T_J = 25\text{ }^\circ\text{C}$ unless otherwise specified)						
PARAMETER	SYMBOL	TEST CONDITIONS	MIN.	TYP.	MAX.	UNITS
Collector to emitter breakdown voltage	$V_{(BR)CES}$	$V_{GE} = 0\text{ V}, I_C = 1\text{ mA}$	1200	-	-	V
Collector to emitter voltage	$V_{CE(on)}$	$V_{GE} = 15\text{ V}, I_C = 100\text{ A}$	-	2.25	3	
		$V_{GE} = 15\text{ V}, I_C = 100\text{ A}, T_J = 125\text{ }^\circ\text{C}$	-	2	2.4	
Gate threshold voltage	$V_{GE(th)}$	$I_C = 1.25\text{ mA}$	3.0	4.4	6.0	
Temperature coefficient of threshold voltage	$\Delta V_{GE(th)}/\Delta T_J$	$V_{CE} = V_{GE}, I_C = 1.25\text{ mA}$	-	-12	-	mV/°C
Forward transconductance	g_{fe}	$V_{CE} = 25\text{ V}, I_C = 100\text{ A}$ Pulse width 50 μs , single shot	-	136	-	S
Collector to emitter leaking current	I_{CES}	$V_{GE} = 0\text{ V}, V_{CE} = 1200\text{ V}$	-	0.03	1.0	mA
		$V_{GE} = 0\text{ V}, V_{CE} = 1200\text{ V}, T_J = 125\text{ }^\circ\text{C}$	-	4.2	10	
Maximum diode forward voltage	V_{FM}	$V_{GE} = 0\text{ V}, I_F = 100\text{ A}$	-	3.3	4.0	V
		$V_{GE} = 0\text{ V}, I_F = 100\text{ A}, T_J = 125\text{ }^\circ\text{C}$	-	3.2	3.8	
Gate to emitter leakage current	I_{GES}	$V_{GE} = \pm 20\text{ V}$	-	-	250	nA

SWITCHING CHARACTERISTICS ($T_J = 25\text{ }^\circ\text{C}$ unless otherwise noted)						
PARAMETER	SYMBOL	TEST CONDITIONS	MIN.	TYP.	MAX.	UNITS
Total gate charge (turn-on)	Q_g	$V_{CC} = 400\text{ V}$ $I_C = 124\text{ A}$	-	830	1245	nC
Gate to emitter charge (turn-on)	Q_{ge}		-	140	210	
Gate to collector charge (turn-on)	Q_{gc}		-	275	412	
Turn-on delay time	$t_{d(on)}$	$R_{G1} = 15\text{ }\Omega$ $R_{G2} = 0\text{ }\Omega$ $I_C = 100\text{ A}$ $V_{CC} = 720\text{ V}$ $V_{GE} = \pm 15\text{ V}$ $T_J = 25\text{ }^\circ\text{C}$	-	570	-	ns
Rise time	t_r		-	85	-	
Turn-off delay time	$t_{d(off)}$		-	581	-	
Fall time	t_f		-	276	-	
Turn-on switching energy	E_{on}	$T_J = 25\text{ }^\circ\text{C}$	-	7.6	-	mJ
Turn-off switching energy	$E_{off}^{(1)}$		-	6.8	-	
Total switching energy	$E_{ts}^{(1)}$		-	14.4	-	
Turn-on delay time	$t_{d(on)}$		$R_{G1} = 15\text{ }\Omega$ $R_{G2} = 0\text{ }\Omega$ $I_C = 100\text{ A}$ $V_{CC} = 720\text{ V}$ $V_{GE} = \pm 15\text{ V}$ $T_J = 125\text{ }^\circ\text{C}$	-	571	
Rise time	t_r	-		89	-	
Turn-off delay time	$t_{d(off)}$	-		606	-	
Fall time	t_f	-		649	-	
Turn-on switching energy	E_{on}	$T_J = 125\text{ }^\circ\text{C}$	-	10	-	mJ
Turn-off switching energy	$E_{off}^{(1)}$		-	16	-	
Total switching energy	$E_{ts}^{(1)}$		-	26	45	
Input capacitance	C_{ies}		$V_{GE} = 0\text{ V}$ $V_{CC} = 30\text{ V}$ $f = 1\text{ MHz}$	-	18 672	
Output capacitance	C_{oes}	-		830	-	
Reverse transfer capacitance	C_{res}	-		161	-	
Diode reverse recovery time	t_{rr}	$I_C = 100\text{ A}$	-	149	-	ns
Diode peak reverse current	I_{rr}	$R_{G1} = 15\text{ }\Omega$ $R_{G2} = 0\text{ }\Omega$	-	104	-	A
Diode recovery charge	Q_{rr}	$V_{CC} = 720\text{ V}$	-	7664	-	μC
Diode peak rate of fall of recovery during t_b	$dl_{(rec)M}/dt$	$dl/dt = 1300\text{ A}/\mu\text{s}$	-	1916	-	$\text{A}/\mu\text{s}$

Note

(1) Repetitive rating; $V_{GE} = 20\text{ V}$, pulse width limited by maximum junction temperature

THERMAL AND MECHANICAL SPECIFICATIONS					
PARAMETER	SYMBOL	TEST CONDITIONS	TYP.	MAX.	UNITS
Thermal resistance, junction to case	IGBT		-	0.24	°C/W
	Diode		-	0.35	
Thermal resistance, case to sink per module	R_{thCS}		0.1	-	
Mounting torque	case to heatsink		-	4.0	Nm
	case to terminal 1, 2 and 3	For screws M5 x 0.8	-	3.0	
Weight of module			200	-	g

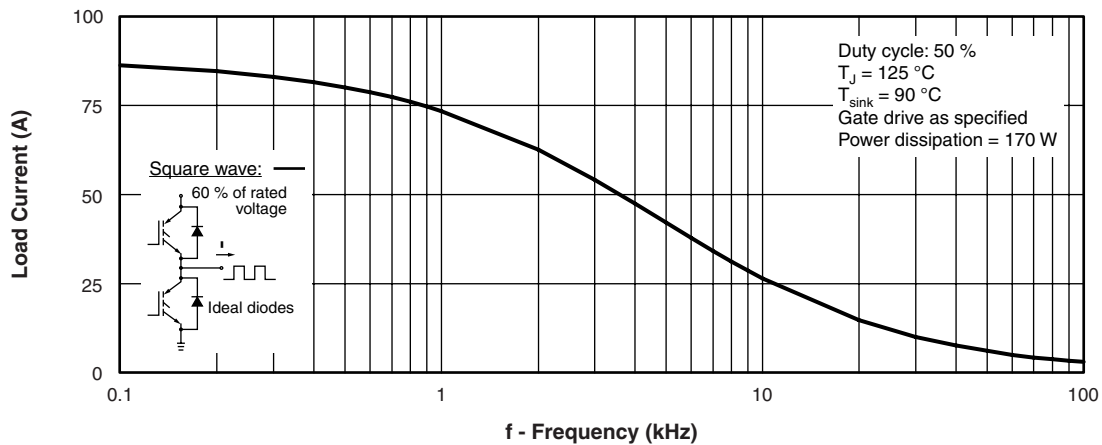


Fig. 1 - Typical Load Current vs. Frequency
(Load Current = I_{RMS} of Fundamental)

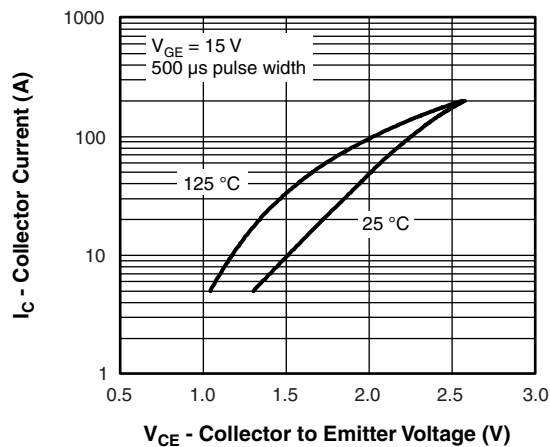


Fig. 2 - Typical Output Characteristics

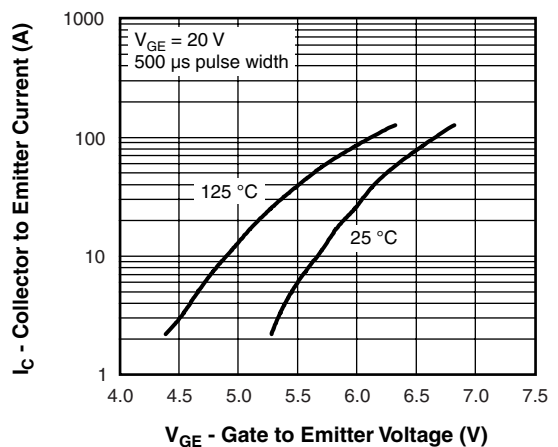
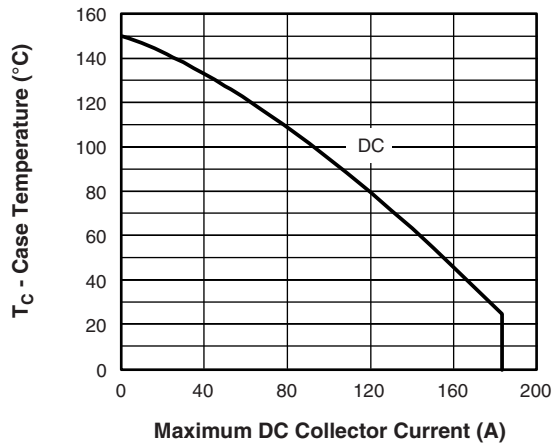
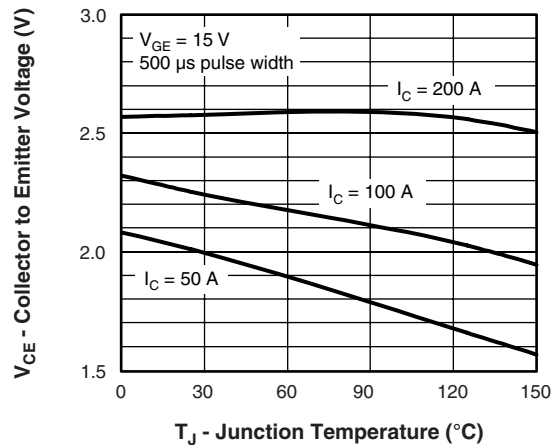


Fig. 3 - Typical Transfer Characteristics



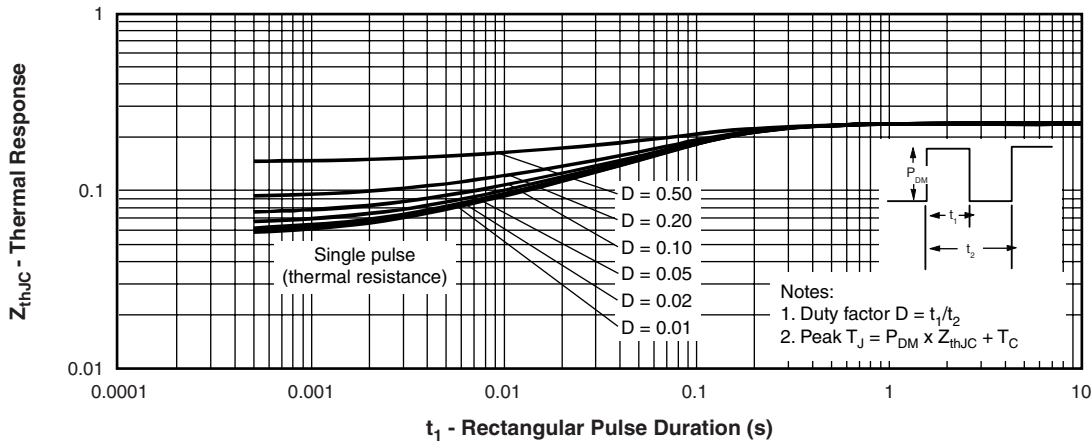
Maximum DC Collector Current (A)

Fig. 4 - Case Temperature vs. Maximum Collector Current



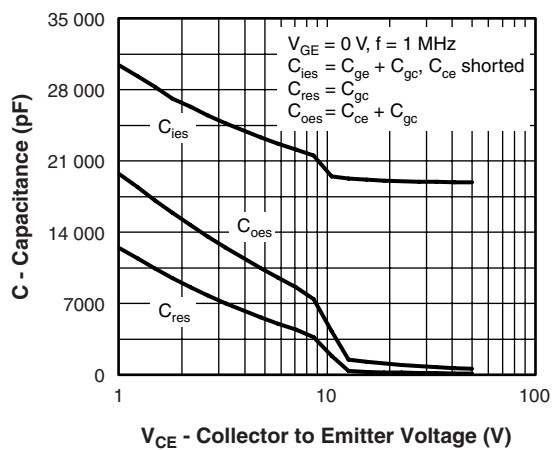
T_J - Junction Temperature ($^{\circ}C$)

Fig. 5 - Typical Collector to Emitter Voltage vs. Junction Temperature



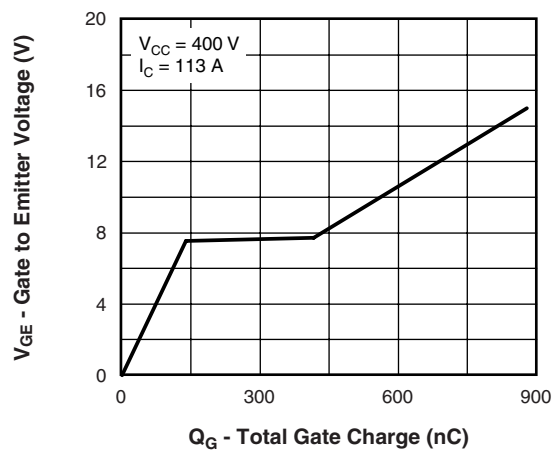
t_1 - Rectangular Pulse Duration (s)

Fig. 6 - Maximum Effective Transient Thermal Impedance, Junction to Case



V_{CE} - Collector to Emitter Voltage (V)

Fig. 7 - Typical Capacitance vs. Collector to Emitter Voltage



Q_G - Total Gate Charge (nC)

Fig. 8 - Typical Gate Charge vs. Gate to Emitter Voltage



"Half-Bridge" IGBT INT-A-PAK Vishay High Power Products
(Ultrafast Speed IGBT), 100 A

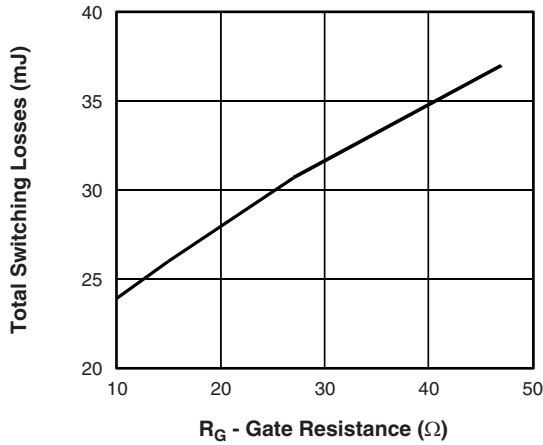


Fig. 9 - Typical Switching Losses vs. Gate Resistance

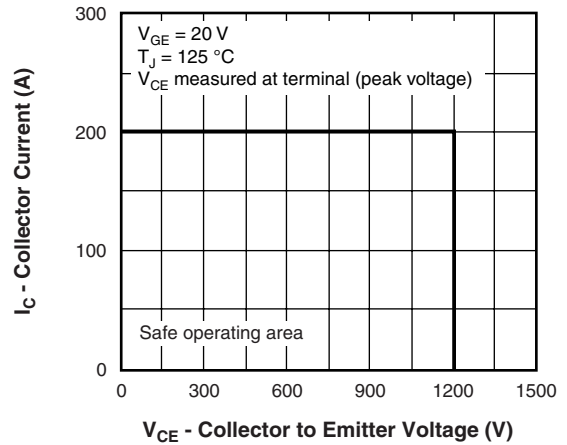


Fig. 12 - Reverse Bias SOA

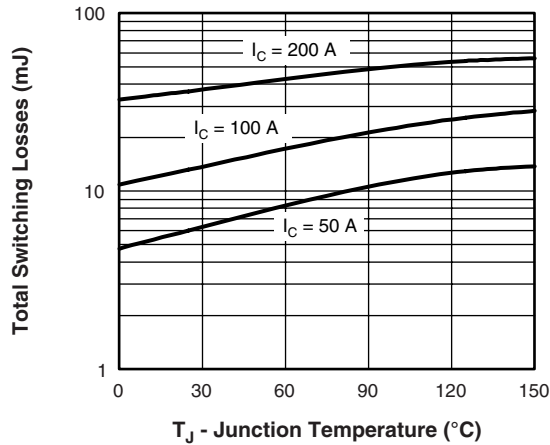


Fig. 10 - Typical Switching Losses vs. Junction Temperature

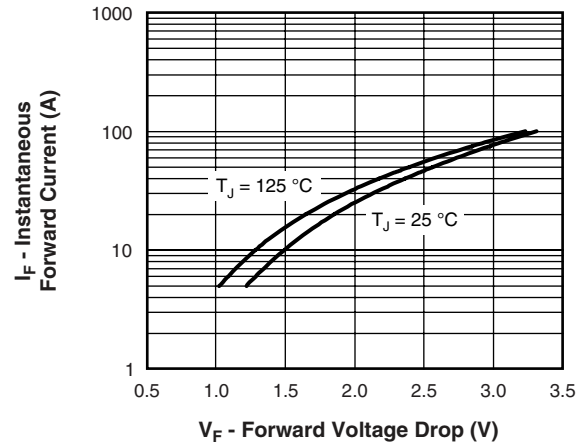


Fig. 13 - Typical Forward Voltage Drop vs. Instantaneous Forward Current

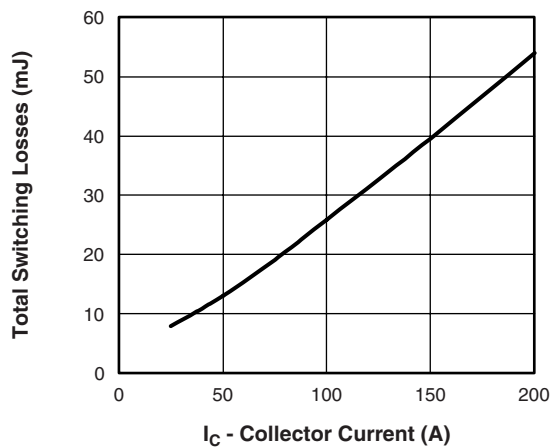


Fig. 11 - Typical Switching Losses vs. Collector Current

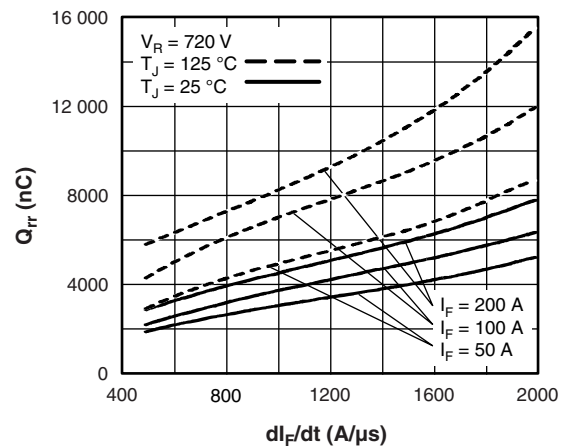


Fig. 14 - Typical Stored Charge vs. di_F/dt

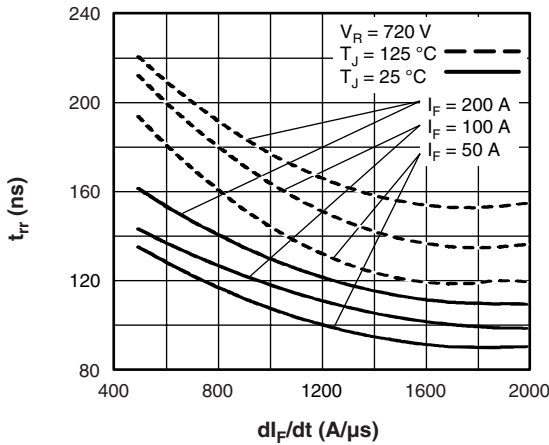


Fig. 15 - Typical Reverse Recovery Time vs. di_F/dt

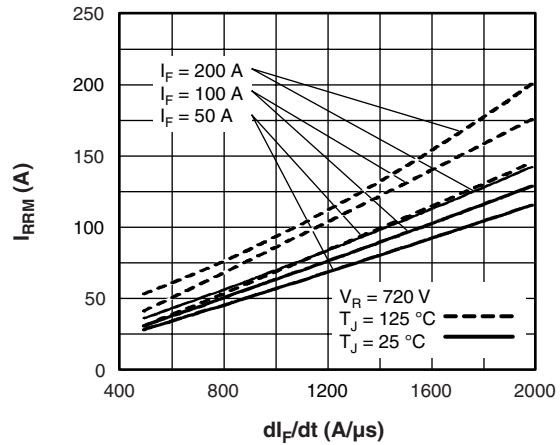


Fig. 16 - Typical Recovery Current vs. di_F/dt

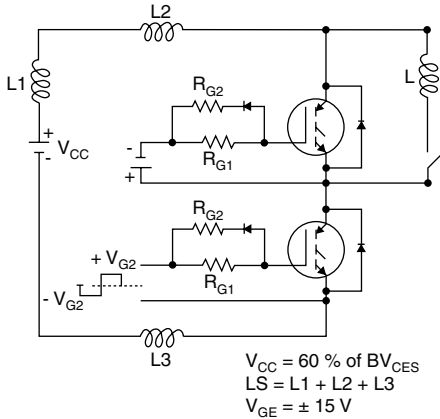


Fig. 17a - Test Circuit for Measurement of I_{LM} , E_{on} , $E_{off}(\text{diode})$, t_{rr} , Q_{rr} , I_{rr} , $t_{d(on)}$, t_r , $t_{d(off)}$, t_f

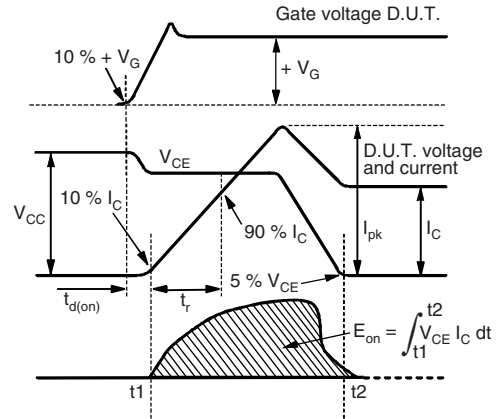


Fig. 17c - Test Waveforms for Circuit of Fig. 18a, Defining E_{on} , $t_{d(on)}$, t_r

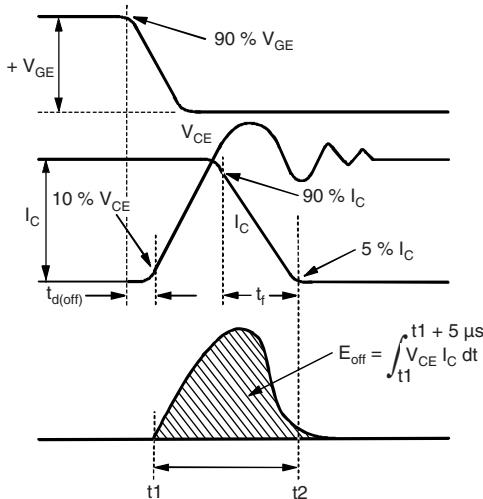


Fig. 17b - Test Waveforms for Circuit of Fig. 18a, Defining E_{off} , $t_{d(off)}$, t_f

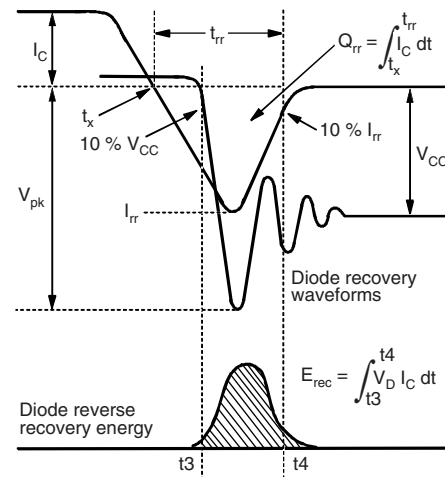


Fig. 17d - Test Waveforms for Circuit of Fig. 18a, Defining E_{rec} , t_{rr} , Q_{rr} , I_{rr}

"Half-Bridge" IGBT INT-A-PAK Vishay High Power Products (Ultrafast Speed IGBT), 100 A

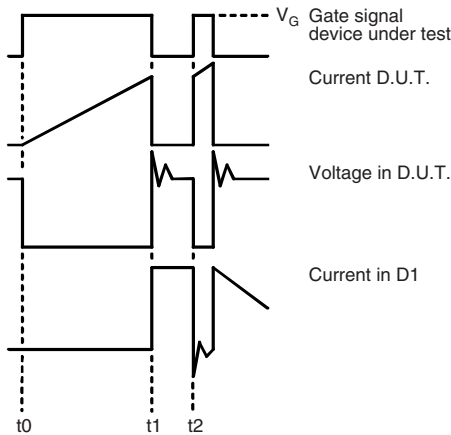
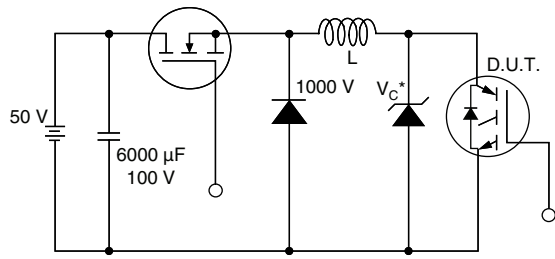


Fig. 17e - Macro Waveforms for Figure 18a's Test Circuit



* Driver same type as D.U.T.; $V_C = 80\%$ of V_{CE} (max)

Note: Due to the 50 V power supply, pulse width and inductor will increase to obtain rated I_d

Fig. 18 - Clamped Inductive Load Test Circuit

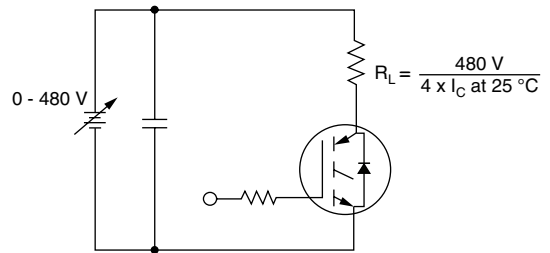


Fig. 19 - Pulsed Collector Current Test Circuit

ORDERING INFORMATION TABLE

Device code	G	A	100	T	S	120	U	PbF
	①	②	③	④	⑤	⑥	⑦	⑧

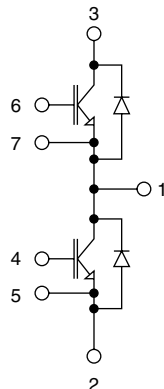
- 1** - Insulated gate bipolar transistor (IGBT)
- 2** - Generation 4, IGBT silicon, DBC construction
- 3** - Current rating (100 = 100 A)
- 4** - Circuit configuration (T = Half-bridge)
- 5** - Package indicator (INT-A-PAK)
- 6** - Voltage rating (120 = 1200 V)
- 7** - Speed/type (U = Ultrafast)
- 8** - PbF = Lead (Pb)-free

GA100TS120UPbF

Vishay High Power Products "Half-Bridge" IGBT INT-A-PAK
(Ultrafast Speed IGBT), 100 A



CIRCUIT CONFIGURATION



LINKS TO RELATED DOCUMENTS

LINKS TO RELATED DOCUMENTS	
Dimensions	http://www.vishay.com/doc?95173



Disclaimer

All product specifications and data are subject to change without notice.

Vishay Intertechnology, Inc., its affiliates, agents, and employees, and all persons acting on its or their behalf (collectively, "Vishay"), disclaim any and all liability for any errors, inaccuracies or incompleteness contained herein or in any other disclosure relating to any product.

Vishay disclaims any and all liability arising out of the use or application of any product described herein or of any information provided herein to the maximum extent permitted by law. The product specifications do not expand or otherwise modify Vishay's terms and conditions of purchase, including but not limited to the warranty expressed therein, which apply to these products.

No license, express or implied, by estoppel or otherwise, to any intellectual property rights is granted by this document or by any conduct of Vishay.

The products shown herein are not designed for use in medical, life-saving, or life-sustaining applications unless otherwise expressly indicated. Customers using or selling Vishay products not expressly indicated for use in such applications do so entirely at their own risk and agree to fully indemnify Vishay for any damages arising or resulting from such use or sale. Please contact authorized Vishay personnel to obtain written terms and conditions regarding products designed for such applications.

Product names and markings noted herein may be trademarks of their respective owners.