



Products for tomorrow...

Headquarter Europe
 MEDER electronic AG
 Friedrich-List Strasse 6
 D-78234 Engen-Welschingen
 Tel.: +49(0)7733-9487-0
 Fax: +49(0)7733-9487-32
 eMail: info@meder.com
 Internet: www.meder.com

Headquarter USA
 MEDER electronic Inc.
 766 Falmouth Rd
 Mashpee, MA 02649
 Phone: +1/ 508-539-0002
 Fax: +1/ 508-539-4088
 eMail: salesusa@meder.com

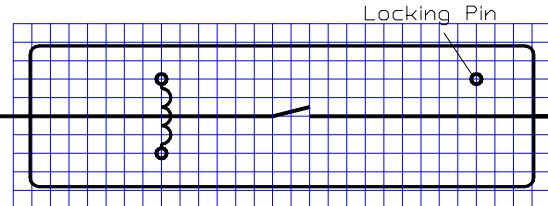
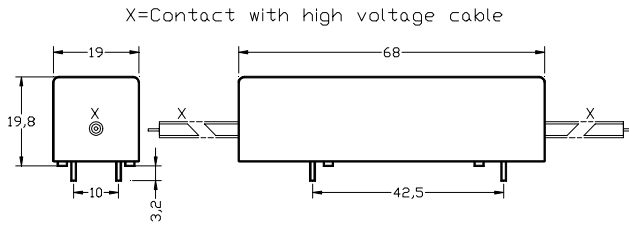
Reed Relay: HM12-1A69-150

Part Number: 8412169150

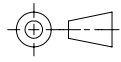
Dimensions (mm)

Layout / Pitch 2,5 mm / Top View

Marking



MEDER-Label
 Type
 Layout
 Production-
 Code-
 EN60062
 /Factory Code



Pins: \varnothing 0,8 mm / L 3,2 \pm 0,3 mm
 Cable: HV insulation sleeve PTFE / L 150 mm

Coil/Relay Characteristics	Conditions at 20°C	Min.	Typ.	Max.	Units
Coil Resistance		135	150	165	Ω
Nominal Voltage			12		VDC
Nominal Rated Power			960		mW
Thermal Resistance			24		K / W
Operate Voltage				9	VDC
Release Voltage		2			VDC

Contact Data 69 (Form A/Dry)					
Contact Rating	Any combination of the switching voltage and current must not exceed the given rated power			50	W
Switching Voltage	DC or Peak AC			10.000	V
Switching Current	DC or Peak AC			3	A
Carry Current	DC or Peak AC			5	A
Static Contact Resistance (initial)	Measured with Nominal Voltage			150	m Ω
Insulation Resistance	RH 45%	10^{10}			Ω
Breakdown Voltage		15.000			VDC
Operate Time, including Bounce	Measured with Nominal Voltage			3,0	ms
Release Time	Measured with no coil suppression			1,5	ms
Capacitance			0,6		pF

Environmental Data					
Insulation Resistance Coil to Contact	RH 45%	10^{12}			Ω
Dielectric Strength Coil to Contact		15			kV DC
Shock	$\frac{1}{2}$ sine wave, duration 11ms			50	g
Vibration	at 800 Hz			20	g
Operating Temperature	10°C/min max. allowable	-20		70	°C
Storage Temperature	10°C/min max. allowable	-35		105	°C
Soldering Temperature	5 sec. at			260	°C
Cleaning				fully sealed	
Material of Pins				Cu-alloy tinned	
Material of Case				Plastics / Polycarbonat	
Sealing Compound				Polyurethan	
Remarks	High Voltage Reed Relay for PCB Mounting. (Contact with HV-Cable)				

Customer / Customer part number	Standard Part
---------------------------------	---------------