

Eaton 9PX UPS

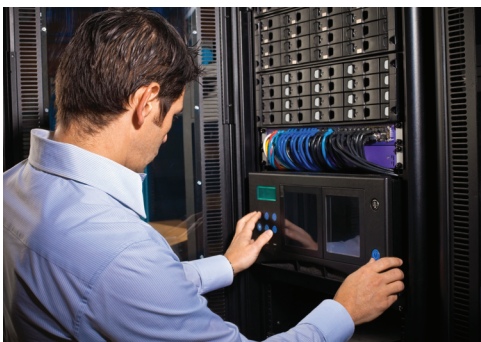
2200–3000W



3000W in only 2U!

Advanced protection for:

- Small and Medium Datacentre
- IT, Networking, Storage and Telecom
- Infrastructure, Industrial and Medical



Energy efficient power protection

Performance and Efficiency

- 9PX is the first UPS in its class to provide Unity power factor (VA=W). It delivers 11% more power than any other UPS as well as powering more servers with equivalent VA ratings and lower power factors.
- Energy Star qualified, the 9PX provides the highest efficiency level to reduce energy and cooling costs.
- Double conversion topology. The Eaton 9PX constantly monitors power conditions and regulates voltage and frequency.
- With a versatile Rack/Tower form factor, the 9PX is the most compact solution delivering up to 3000W in only 2U.

Manageability

- The graphical LCD display provides clear information on the UPS's status and measurements on a single screen. Enhanced configuration capabilities are also available.
- 9PX can meter energy consumption right down to the managed outlet groups. kWh values can be monitored using the LCD or Eaton's Intelligent Power® Software.
- Load segment control enables prioritised shutdowns of non-essential equipment to maximize battery runtime for critical devices.
- 9PX offers Serial and USB connectivity, plus an extra slot for an optional communication card. Eaton's Intelligent Power® Software seamlessly integrates with leading virtualisation environments and cloud orchestrations tools.

Availability and Flexibility

- 9PX 2200 & 3000 are available in RT2U format (optimised for rack mounting) or RT3U (for tower or short-depth racks), pedestal and rail kits are included with all models.
- The internal bypass allows service continuity in case of internal fault, a maintenance bypass is also available (as standard on HotSwap version) for easy replacement of the UPS.
- Stronger, longer battery life: Eaton ABM® battery management technology uses an innovative three-stage charging technique that extends battery life by up to 50%.
- More runtime can be added with up to 4 external hot-swappable battery modules, able to run systems for hours if necessary.



VA =
Watt

EATON

Powering Business Worldwide

Eaton 9PX UPS Technical Specifications

- Graphical LCD display :
 - Clear information on UPS status and measurements
 - Enhanced configuration capabilities
- Panel for batteries replacement (Hot swappable)
- Slot for Management card (Network card delivered as standard on netpack version)



- Outputs: 8 x IEC 10A + 2 x IEC 16A with energy metering (including 2 programmable groups)
- USB port, 1 serial port, Remote ON/OFF, Remote power OFF and Relay output
- External battery (EBM) connector

Eaton 9PX 3000VA

Technical Specifications	2200VA	3000VA				
Rating (VA/W)	2200VA/2200W	3000VA/3000W				
Format	RT2U (tower/rack 2U) and RT3U (tower/rack 3U short depth)					
Electrical Characteristics						
Technology	On-line double conversion with Power Factor Correction (PFC) system					
Nominal voltage	200/208/220/230/240V					
Input voltage range	176-276V without derating (up to 100-276V with derating)					
Input frequency range	40-70Hz, 50/60Hz autoselection, frequency converter mode					
Efficiency	up to 93% in online mode (up to 98% in Hi-efficiency mode)	up to 94% in online mode (up to 98% in Hi-efficiency mode)				
Connections						
Input	1 IEC C20 (16A) or terminal block on HotSwap MBP HW (Hard-Wired)					
Outputs	8 IEC C13 (10A) sockets + 2 IEC C19 (16A) sockets					
Outputs with HotSwap Maintenance Bypass	4 FR/Schuko sockets or 3 BS sockets or 6 IEC 10A sockets or terminal blocks (HW version)					
Switched Outlet Group	2 outlet groups					
Batteries						
Typical backup times (minutes)*	300W	500W	800W	1200W	1800W	2500W
9PX 2200	44	23	15	9	5	
9PX 2200 + 1 EBM	205	120	75	47	29	
9PX 2200 + 4 EBM	780	480	295	184	118	
9PX 3000	60	36	23	13	7	4
9PX 3000 + 1 EBM	221	140	84	52	33	22
9PX 3000 + 4 EBM	824	520	320	194	122	80
Battery management	ABM® & Temperature compensated charging method (user selectable), Automatic battery test, deep discharge protection, automatic recognition of external battery units					
Communication						
Communication ports	1 USB port + 1 serial RS232 port + 1 mini-terminal block for remote ON/OFF + 1 mini-terminal block for Remote Power Off + 1 mini-terminal block for Output relay					
Communication slot	1 slot for Network-MS card (included in Netpack versions), ModBus-MS or Relay-MS cards					
Operating conditions, standards and approvals						
Operating temperature	0 to 40°C					
Typical Noise level	40dB					
Safety	IEC/EN 62040-1, UL 1778, CSA 22.2					
EMC	IEC/EN 62040 -2, FCC Class B, CISPR22 Class B					
Approvals & Markings	CE /CB report (TUV) / cULus / EAC / RCM / KC / Energy Star					
Dimensions H x W x D in mm/Weight						
UPS	2U version: 86,5*440*605/25kg 3U short depth version: 130*440*485/24.5kg			2U version: 86,5*440*605/27.6kg 3U short depth version: 130*440*485/27.4kg		
EBM	2U version: 86,5*440*605/39.2kg 3U short depth version: 130*440*485/38.2kg					
Customer Service and Support						
Warranty	3 years on electronics, 2 years on batteries					
* Backup times are approximate and may vary with equipment, configuration, battery age, temperature, etc						
Parts Numbers*			9PX 2200VA	9PX 3000VA		
UPS RT3U	9PX2200IRT3U			9PX3000IRT3U		
UPS RT2U	9PX2200IRT2U			9PX3000IRT2U		
UPS RT3U with HotSwap MBP	IEC: 9PX2200IRTBP HW: 9PX2200IRTBPH FR: 9PX2200IRTBPF DIN: 9PX2200IRTBPD BS: 9PX2200IRTBPB			IEC: 9PX3000IRTBP HW: 9PX3000IRTBPH FR: 9PX3000IRTBPF DIN: 9PX3000IRTBPD BS: 9PX3000IRTBPB		
UPS RT2U with Network card	9PX2200IRTN			9PX3000IRTN		
EBM	2U: 9PXEbm72RT2U 3U: 9PXEbm72RT3U					
2m battery connection cable	EBMCBL72					
Battery Integration System	BINTSYS					

*All 9PX UPS and EBM are delivered with rack kit