

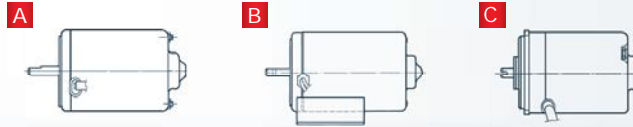
## PLANETARY GEAR

- REDUCTORES PLANETARIOS: combinables con la serie 169. Ver sección especial en catálogo.
- PLANETARY GEARS: combinable with 169 series. See special section in catalogue.
- REDUCTEURS PLANÉTAIRES: combinables avec la série 169. Consultez section spécial du catalogue.
- PLANETENGETRIEBE: Mit der Reihe 169 kombinierbar. Sehen Sie Sonderabschnitt im Katalog.

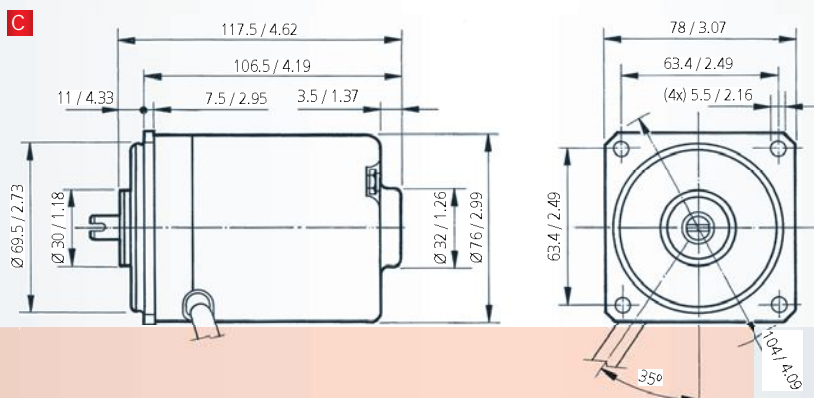
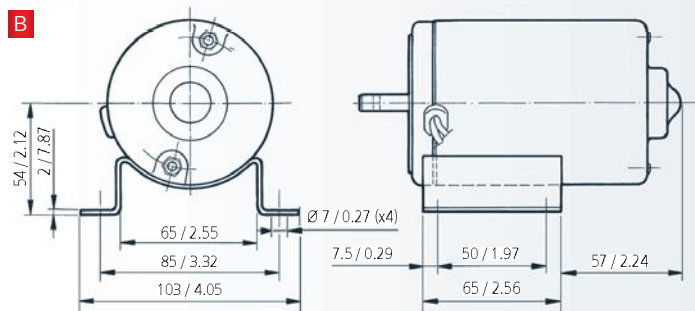
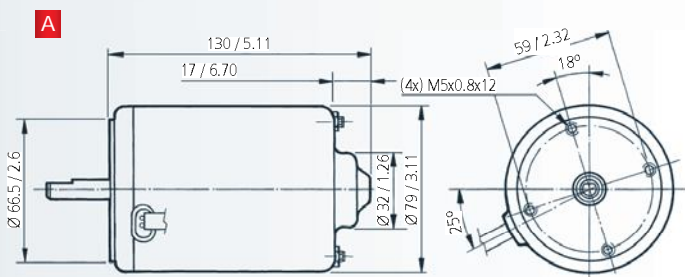


2 POLOS  
2 POLES  
2 PÔLES  
2 PHASEN

4 POLOS  
4 POLES  
4 PÔLES  
4 PHASEN



REFERENCIA REFERENCE NUMBER REFERENZNUMMERN	TENSION NOMINAL NOMINAL VOLTAGE TENSION NOMINALE NENNSPANNUNG	POTENCIA NOMINAL NOMINAL TORQUE COUPLE NOMINAL DREHMOMENT NOMINAL	VELOCIDAD NOMINAL NOMINAL SPEED VITESSE NOMINALE GESCHWINDIGKEIT NOMINAL	CORRIENTE NOMINAL NOMINAL CURRENT COURANT NOMINAL NOMINALSTROM	PAR DE ARRANQUE STARTING TORQUE COUPLE DE DEMARRAGE ANZUGSDREHMOMENT	CORRIENTE DE ARRANQUE STARTING CURRENT COURANT DE DEMARRAGE ANZUGSSTROM	EF SHAFI ARRB WELLE	CONEXIONES CONNECTIONS CONNEXIONS ANSCHLÜSSE	ESQUEMA ELECTRICO WIRING DIAGRAM SCHEMA ELECTRIQUE SCHALTBILD	PESO APROXIMADO APPROXIMATE WEIGHT POIDS APPROXIMATIF GEWICHT (Ca.)	GRADO DE ESTANQUEDAD WATERTIGHTNESS ÉTANCHÉITÉ FEUCHTIGKEITSSCHUTZKASSE	DISEÑO A B DESIGN A B DESSIN A B ABBILDUNG A B	CURVA CURVE COURBE KURVE
	Un (V)	Mn (N.m./lbf.in)	Pn (r.p.m.)	In (A)	Ma (N.m./lbf.in)	Ia (A)				P (kg/lb.t)	IP		
169.4106.20.04	12	0.40 / 3.54	1900	11	2.0 / 17.7	46	E14	C14	EE2	2.0 / 5.35	IP53	a	45
169.4106.30.04	24	0.40 / 3.54	1900	5.5	2.0 / 17.7	23	E14	C14	EE2	2.0 / 5.35	IP53	a	45
169.4107.20.04	12	0.40 / 3.54	2900	16	2.2 / 19.4	100	E15	C15	EE2	2.0 / 5.35	IP53	a	46
169.4107.30.04	24	0.40 / 3.54	2900	8	2.2 / 19.4	50	E15	C15	EE2	2.0 / 5.35	IP53	a	46
169.4110.20.04	12	0.40 / 3.54	1500	9	2.0 / 17.7	38	E16	C16	EE6	2.0 / 5.35	IP53	a	47
169.4110.30.04	24	0.40 / 3.54	1500	4.5	2.0 / 17.7	19	E16	C16	EE6	2.0 / 5.35	IP53	a	47
169.4113.20.09	12	0.40 / 3.54	3200	16	2.2 / 19.4	85	E18	C18	EE8	1.37 / 3.67	IP53	c	48
169.4113.30.09	24	0.40 / 3.54	3200	8	2.2 / 19.4	43	E18	C18	EE8	1.37 / 3.67	IP53	c	48
169.4122.20.09	12	0.30 / 2.65	4600	16	1.8 / 15.9	100	E18	C18	EE8	1.37 / 3.67	IP53	c	49
169.4124.20.04	12	0.40 / 3.54	1900	11	2.0 / 17.7	46	E60	C14	EE2	2.0 / 5.35	IP53	b	45
169.4124.30.04	24	0.40 / 3.54	1900	5.5	2.0 / 17.7	23	E60	C14	EE2	2.0 / 5.35	IP53	b	45
169.4128.20.04	12	0.40 / 3.54	1500	9	2.0 / 17.7	38	E64	C26	EE1	2.0 / 5.35	IP53	b	47

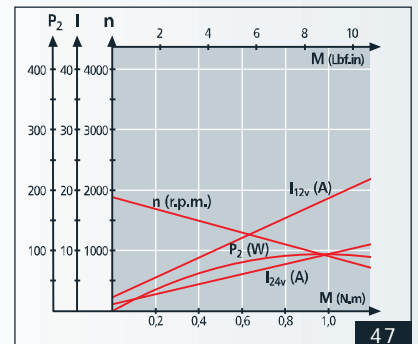
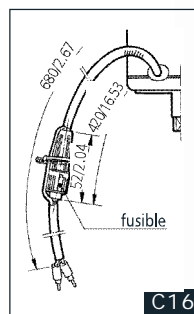
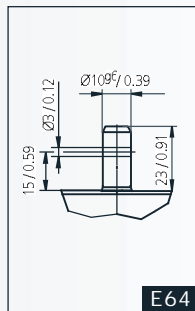
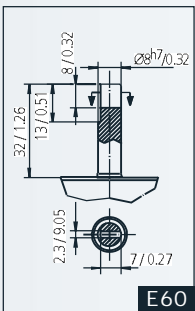
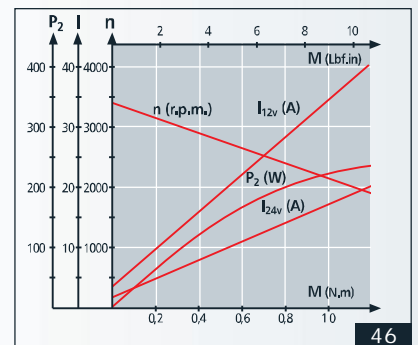
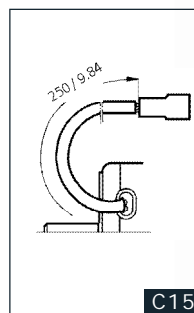
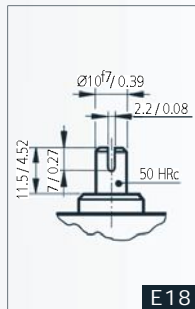
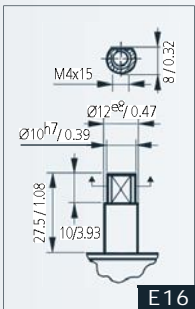
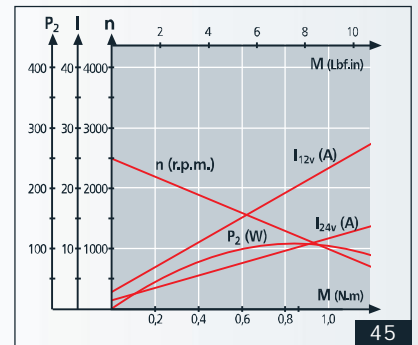
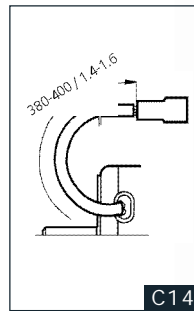
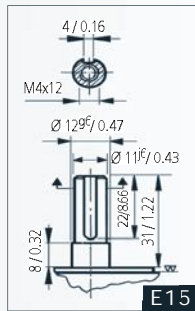
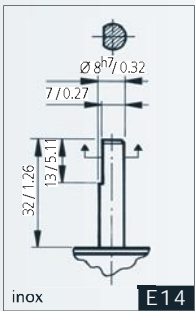


mm / inch

EJE - SHAFT - ARBRE - WELLE

CONEXIONES - CONNECTIONS  
CONNEXIONS - ANSCHLUSSART

CURVAS - CURVES - COURBES - KURVEN



ESQUEMA ELÉCTRICO - WIRING DIAGRAM  
SCHEMA ÉLECTRIQUE - SCHALTBIKD

