

# COUNTIS<sup>®</sup> E

Energy Measurement  
for your installations

MADE TO MEASURE



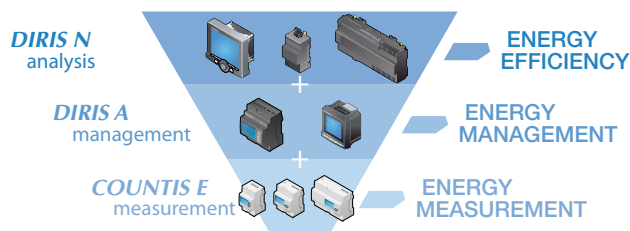
# A comprehensive range for measuring your energy efficiency



GAMME 115 A GB

The new **DIRIS & COUNTIS** solutions are tailored to the requirements of industrial or tertiary environments: energy metering, quality monitoring and analysis of electrical networks.

Compliant with the new standard IEC 61557-12 specifically for multi-measurement devices (PMD), they guarantee the operator use of a product designed and tested in accordance with the functional requirements of its application, ensuring a high performance level.



DIRIS 792 B GB

## The **DIRIS**® system: the reference

Measurement is the key link in managing an energy efficiency project.

With **DIRIS**, SOCOMEC has developed the most advanced multifunction measurement range on the market, dedicated to improving your energy performance.

For over 20 years, thousands of users, installers or integrators have trusted **DIRIS** innovative solutions for:

- energy metering and management
- electrical facility monitoring
- power quality analysis.

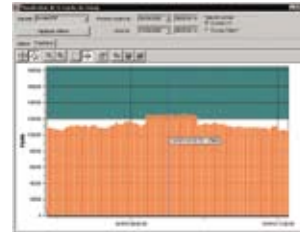
Follow the leader and run with the pioneers, by opting for the **DIRIS** solution.

For further information: [www.socomec.com](http://www.socomec.com)

## Software

### Control Vision

Designed to communicate with all the installation's products, including and reading **COUNTIS Ci**, it offers the option of viewing all the measured data, and reading the energy consumption of a production line or process. The energy may be electrical or multi-fluid (water, gas, fuel oil, etc.)



Load graph

DIRIS 514 A

General meter reading

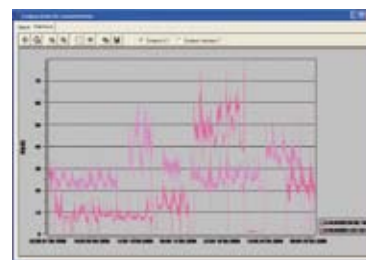
DIRIS 508 A

### Billing Application

This application operates with Control Vision, and enables electrical energy to be managed according to a billing system. It offers the option of fine tuning the consumption and also enables electrical energy consumption to be distributed according to company criteria per production line, per department, etc.).

Bill

DIRIS 724 A



Load curve comparison

DIRIS 725 A

### Multi-fluid (electricity, water, compressed air, fossil fuels)

Used in an energy-efficient programme, this software enables the management of the energy consumption of an industrial site or building. Depending on the automatic consumption readings on each energy meter (electricity, water, air, gas, etc.), it provides each user with a consumption report for a machine, production line, lighting circuit or commercial area. Socomec will assign a team of specialists to help you tailor the best solution.

# COUNTIS<sup>®</sup> E

MADE TO MEASURE

A complete range of energy meters



## MID EN 50470 certified

MID EN 50470 (B+D module) certification available for specific *COUNTIS E* version  
This certification is essential in billing applications where invoicing of consumed energy is required.

## Direct connection 32, 63 and 100 A or via CT

The extensive *COUNTIS E* range contains products suited to all types of network. This could be a 32 or 63 A single phase direct connection, a 63 A or 100 A three-phase connection or via a current transformer.

## Communication

Some *COUNTIS E* have optional RS485 communication using Jbus/Modbus protocol. This makes it possible to remotely view all the data from the energy meters and centralise them on a remote monitoring system or BMS.

A pulse output is also available on certain products (unless they have RS485 communication).



# The COUNTIS range

## Selection guide

															
	AM10	E10	E11	E12	E20	E21	E30	E31	E32	E33	E40	E41	E42	E50	E53
Single phase network with direct connection	32 A	63 A	63 A	63 A											
Three-phase network with direct connection					63 A	63 A	100 A	100 A	100 A	100 A					
Three-phase network with connection to CT/5 A											6000 A	6000 A	6000 A	6000 A	6000 A
MID EN50470 certified B+D class B module				•					•				•		
RS485 JBUS/MODBUS communication										•					•
Pulse output	•	•	•	•	•	•	•	•	•	•	•	•	•	•	optional
NETWORK															
Self supplied	•	•	•	•	•	•	•	•	•	•	•	•	•		
Auxiliary power supply														110...400 VAC 120...350 VDC	110...400 VAC 120...350 VDC
ENERGY METERING															
Total/partial kWh (IEC 62053-21 class 1)	•/-	•/•	•/•	•/-	•/•	•/•	•/•	•/•	•/-	•/•	•/•	•/•	•/-	•/•	•/•
Total/partial kvarh											•/•	•/•	•/-	•/•	•/•
Multi-tariff			2	2		2		2	2	2		2	2		4 via RS485
EN50470-3 class B compliant		•	•	•	•	•	•	•	•	•	•	•	•		
Metrological LED	•	•	•	•	•	•	•	•	•	•	•	•	•		
IEC 62053-11 & IEC 62053-31		•	•	•	•	•	•	•	•	•	•	•	•		
IEC 61557-12		•	•	•	•	•	•	•	•	•	•	•	•	•	•
MEASUREMENTS															
Active power (ΣP)/Reactive power (ΣQ)		•/-	•/-	•/-	•/-	•/-	•/-	•/-	•/-	•/-	•/•	•/•	•/•	•/•	•/•
Multi-measurement (I, U, V, S, FP)														•	•
INSTALLATION															
Size (modules)	1	3	3	3	4	4	7	7	7	7	4	4	4	96 x 96	96 x 96
Protection against Phase/Neutral inversions					•	•	•	•	•	•	•	•	•		
Connection control		•	•	•	•	•	•	•	•	•	•	•	•	•	•
Sealable cover		optional	optional	•	optional	optional	optional	optional	•	optional	optional	optional	•		

## References

➤ <b>COUNTIS</b> single-phase 32 A	
AM10	4850 AM10
➤ <b>COUNTIS</b> single-phase 63 A	
E10 Direct	4850 3000
E11 Direct - Dual Tariff	4850 3001
E12 Direct - Dual Tariff - MID	4850 3002
➤ <b>COUNTIS</b> three-phase 63 A	
E20 Direct	4850 3003
E21 Direct - Dual Tariff	4850 3004
➤ <b>COUNTIS</b> three-phase 100 A	
E30 Direct	4850 3005
E31 Direct - Dual Tariff	4850 3006
E32 Direct - Dual Tariff - MID	4850 3007
E33 Direct with JBUS/MODBUS communication via RS485	4850 3012
➤ <b>COUNTIS</b> three-phase CT/5 A	
E40 via CT	4850 3008
E41 via CT - Dual tariff	4850 3009
E42 Meter via CT - MID	4850 3015
➤ <b>COUNTIS</b> three-phase CT/5 A	
E50 Outputs (pulse output x 1)	4850 3010
E53 Modbus RS485 communication	4850 3011
➤ Sealable cover	
for Countis E1x	4850 303U
for Countis E2x	4850 304U
for Countis E3x	4850 307U
for Countis E4x	4850 304U



# Socomec worldwide

## IN EUROPE

### BELGIUM

SOCOMECH BELGIE  
B - 1190 Brussel  
Tel. +32 (0)2 340 02 30 - Fax +32 (0)2 346 28 99  
be.scp.order@socomec.com

### FRANCE

SOCOMECH  
F - 67235 Benfeld Cedex  
Tel. +33 (0)3 88 57 41 41 - Fax +33 (0)3 88 74 08 00  
scp.vex@socomec.com

### GERMANY

SOCOMECH GmbH  
D - 76275 Ettlingen  
Tel. +49 (0)7243 65 29 2 0 - Fax +49 (0)7243 65 29 2 13  
info@socomec.com

### ITALY

SOCOMECH Elettrotecnica s.r.l.  
I - 20098 San Giuliano Milanese (MI)  
Tel. +39 02 98 498 21 - Fax +39 02 98 243 310  
it.scp.info@socomec.com

### SPAIN

SOCOMECH ELECTRO, S.L.  
E - 08310 Argentona (Barcelona)  
Tel. +34 93 741 60 67 - Fax. +34 93 757 49 52  
es.scp.info@socomec.com

### THE NETHERLANDS

SOCOMECH B.V.  
NL - 3992 De Houten  
Tel. +31 (0)30 63 71 504 - Fax +31 (0)30 63 72 166  
info@socomec.nl

### UNITED KINGDOM

SOCOMECH Ltd  
Hitchin Hertfordshire SG4 0TY  
Tel. +44 (0)1462 440033 - Fax +44 (0)1462 431143  
sales.uk.scp@socomec.com

## IN ASIA

### NORTH EAST ASIA

SOCOMECH CHINA  
CN - 20030 P.R.C Shanghai  
Tel. +86 21 5298 9555 - Fax +86 21 6228 3468  
socomec@socomec-shanghai.com

### SOUTH EAST ASIA & PACIFIC

SOCOMECH SWITCHING AND PROTECTION  
UBI TECHPARK - Singapore  
Tel. +65 65 07 94 90 - Fax +65 65 47 86 93  
sg.scp.socomec@socomec.com

### SOUTH ASIA

SOCOMECH-HPL PVT  
Gurgaon, Haryana - India  
Tel. +91 124 2210970 - 74 - Fax +91 124 2210976  
in.scp.socomec-hpl@socomec.com

## IN THE MIDDLE EAST

### UNITED ARAB EMIRATES

SOCOMECH Middle East  
Dubai, U.A.E.  
Tel. +971 (0) 4 29 98 441 - Fax +971 (0)4 29 98 449  
sales.ae.scp@socomec.com

## IN NORTH AMERICA

### USA, CANADA & MEXICO

SOCOMECH Inc  
Cambridge, MA 02142 USA  
Tel. +1 617 245 0447 - Fax +1 617 245 0437  
us.scp.sales@socomec.com

## HEAD OFFICE

### SOCOMECH GROUP

S.A. SOCOMECH capital 11 313 400 €  
R.C.S. Strasbourg B 548 500 149  
B.P. 60010 - 1, rue de Westhouse - F-67235 Benfeld Cedex - FRANCE

## INTERNATIONAL SALES DEPARTMENT

### SOCOMECH

1, rue de Westhouse - B.P. 60010  
F - 67235 Benfeld Cedex - FRANCE  
Tel. +33 (0)3 88 57 41 41 - Fax +33 (0)3 88 74 08 00  
scp.vex@socomec.com

[www.socomec.com](http://www.socomec.com)

Non contractual document. © 2009, Socomec SA. All rights reserved.



**socomec**  
Innovative Power Solutions