

The ETP-CLASSIC

An excellent solution to most applications

Easy fitting and removal

Metric and imperial sizes

Few screws and low tightening torques

No backlash or fretting

Hex-head screw option for installations with limited space

Transmits medium to high torques



H7 hub tolerances, h8 shaft tolerances for all sizes.
A k6 shaft tolerance will improve the transmittable torque Tr.

Metric sizes

ETP CLASSIC size	Rated torque at 20°C Tr Nm	Max axial force Fr kN	Weight grams	A	B	C	D	E	F	Stockline No.	No. of screws	Screw tightening torque Nm	Hex. key size mm	Special hexagon headed screw Stockline No.
ETP 15	55	7.3	100	38	15	23	17	30	35	R6-36 320	3	6	4	R6-56 476
ETP 19	100	10.6	170	45	19	28	21	37	42	R6-36 339	3	8	4	R6-56 476
ETP 20	125	12.5	160	45	20	28	22	37	42	R6-38 952	3	8	4	R6-56 476
ETP 22	135	12.3	190	49	22	32	22	37	42	R6-38 960	4	8	4	R6-56 476
ETP 24	200	16.7	200	49	24	34	25	40	45	R6-38 979	4	8	4	R6-56 476
ETP 25	250	20.0	190	49	25	34	27	43	48	R6-38 987	4	8	4	R6-56 476
ETP 28	300	21.4	260	55	28	39	29	45	50	R6-38 995	4	8	4	R6-56 476
ETP 30	420	28.0	290	57	30	41	32	47	52	R6-39 00X	4	8	4	R6-56 476
ETP 32	420	26.3	350	60	32	43	34	52	57	R6-39 018	4	8	4	R6-56 484
ETP 35	650	37.1	400	63	35	47	37	55	60	R6-39 026	6	8	4	R6-56 484
ETP 38	750	39.5	430	65	38	50	41	59	64	R6-39 034	6	8	4	R6-56 484
ETP 40	940	47.0	550	70	40	53	43	63	68	R6-39 042	6	8	4	R6-56 492
ETP 42	940	44.8	550	70	42	55	45	65	70	R6-39 050	6	8	4	R6-56 492
ETP 45	1290	57.3	710	77	45	59	49	69	75	R6-39 069	6	13	5	R6-56 504
ETP 48	1570	65.4	780	80	48	62	52	73	79	R6-39 077	6	13	5	R6-56 504
ETP 50	1900	76.0	860	83	50	65	53	76	82	R6-39 085	6	13	5	R6-56 512
ETP 55	2500	90.9	1060	88	55	71	58	82	88	R6-39 093	8	13	5	R6-56 512
ETP 60	3400	113.0	1370	95	60	77	64	90	96	R6-39 105	8	13	5	R6-56 520
ETP 65	3500	108	1670	102	65	84	68	96	102	R6-39 113	8	13	5	R6-56 520
ETP 70	5200	149.0	2040	113	70	90	72	99	107	R6-39 121	6	32	6	R6-56 539
ETP 75	6300	168.0	2510	118	75	95	85	114	122	R6-39 13X	6	32	6	R6-56 547
ETP 80	8800	220.0	2680	123	80	100	90	120	128	R6-39 148	6	32	6	R6-56 547
ETP 90	11000	244.0	3520	135	90	112	100	133	141	R6-39 164	8	32	6	R6-57 213
ETP 100	15500	310.0	4870	148	100	125	110	145	153	R6-39 180	8	32	6	R6-57 213

Imperial sizes (inch)

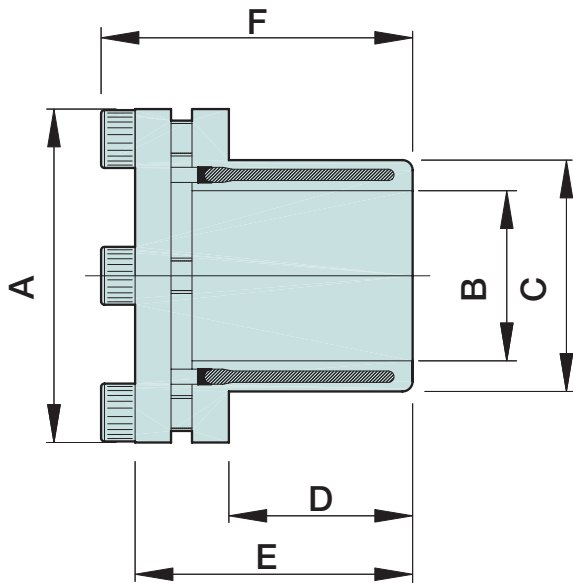
ETP 3/4in	88	9.3	180	45	3/4 in	28	21	37	42	R6-485 18X	3	7	4	R6-56 476
ETP 7/8in	135	12.1	210	49	7/8 in	32	22	37	42	R6-152 205	3	8	4	R6-56 476
ETP 1in	195	16.2	215	51	1 in	35	27	43	48	R6-114 323	4	8	4	R6-56 476
ETP 1 1/4in	410	26.1	380	60	1 1/4 in	43	34	52	58	R6-114 331	4	13	5	R6-184 700
ETP 1 3/8in	540	31.1	430	63	1 3/8 in	47	37	55	60	R6-114 34X	6	8	4	R6-56 484
ETP 1 1/2in	700	41.3	470	68	1 1/2 in	52	41	59	64	R6-73 177	6	8	5	R6-56 484
ETP 1 3/4in	1180	53.0	740	77	1 3/4 in	59	49	69	75	R6-114 358	6	13	5	R6-56 504
ETP 2in	1620	64.3	839	88	2 in	68	53	76	82	R6-114 366	6	13	5	R6-56 512
ETP 2 1/2in	3100	97.6	1750	107	2 1/2 in	84	62	88	96	R6-152 213	6	32	6	R6-56 539
ETP 3in	5300	139.1	2255	121	3 in	98	74	103	111	R6-152 221	6	32	6	R6-56 547
ETP 4in	12500	264.0	4800	155	4 in	130	97	132	140	R6-152 23X	8	32	6	R6-57 213

Where both torque and axial force are to be transmitted together and for other technical information, see page 547.

Note: Other imperial sizes available on request

Stockline numbers in blue are normally held in stock

The ETP-CLASSIC



ETP CLASSIC

Hex headscrews

Available for use with ETP bush when space is limited.
Hex headscrews are standard on ETP CLASSIC R.

Concentricity

Radial – 0.04 mm TIR sizes 15 to 70

0.06 mm TIR sizes 75 to 100

Axial – 0.06 mm TIR for all sizes at 120 mm diameter.

This also applies to ETP CLASSIC R.

Temperature limit

Maximum 85°C – minimum -30°C.

For temperatures below 10°C or for applications with large variation in temperature, contact our Bedford office.

Ordering example

(15) off ETP bushes, for shaft \varnothing 30mm.

Stockline No. **R6-39 00X**

(1) off torque wrench SLO. To suit ETP bush size \varnothing 30

Stockline No. **R6-344 074**