

Search for:

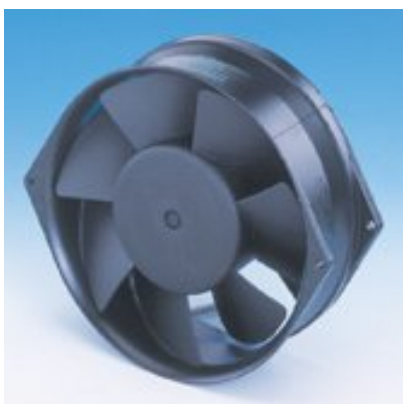
Products & Services

Company Name

ebmpapst

[us](#)

Tubeaxial W2G130 Series



Specifications

Stock #	▶ W2G130-AA33-01
Air Flow Rate @ 0 PSI (CFM)	▶ 203
Curve	▶ 1
Voltage Range, Fans (V)	▶ 18 - 30
Voltage (V)	▶ 24
Power Consumption (W)	▶ 14
Noise (dBA)	▶ 51
Ambient Temperature, Maximum (C.)	▶ 60
Connector - Fitting (Fan)	▶ Leads
Bearing - Motor, Fan, Compressor	▶ Ball

Fan Size (mm)	▶ 150roundx55
Weight - Fan (oz)	▶ 35.00

[Click here for related products and specifications](#)

Component Database - Search 26,233 Global Manufacturers
[products & services](#) | [searchable catalogs](#) | [donations](#)
Database Last Updated: 11/27/2005