

# 300 Hook Key Cabinet (With cylinder lock)



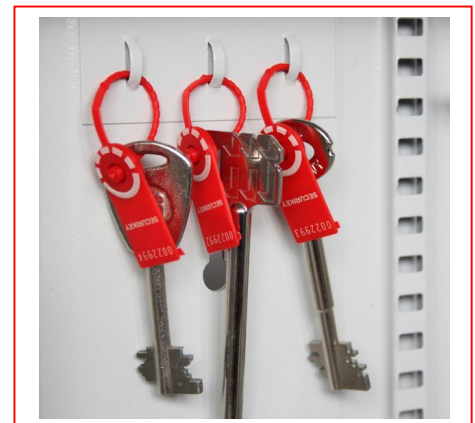
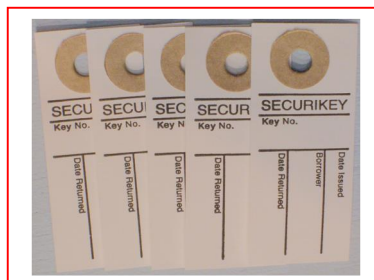
- Loose keys are lost keys - Control them with a key management system
- 1.5mm steel cabinet with flush closing rim to resist forced entry
- Adjustable colour coded and numbered hook bars allow the layout to be customised
- Ingenious key tabs are designed to hang so that the number is always visible
- Includes 7 security seals and loops to secure keys that require clear evidence of tampering or removal
- Key locations can be recorded on the control index which is removable for added security
- Durable Light Grey paint finish will suit most environments
- Supplied with security lock and 2 keys

	Height	Width	Depth
219677	550mm	380mm	205mm

## Key Cabinet Accessories

**219655** Key Tags . Supplied in bags of 100. 20 of each colour Blue Red, Yellow, Black & Green. (Numbers not included)

**219857** Key Location Cards - An ideal way to control the issue and return of keys. The key user signs a tab which is then hung in place of the borrowed key. A 'spot check' of 'keys out' can be made in seconds. On return of the borrowed key the tab can be filed for future reference



## Security Seals & Loops

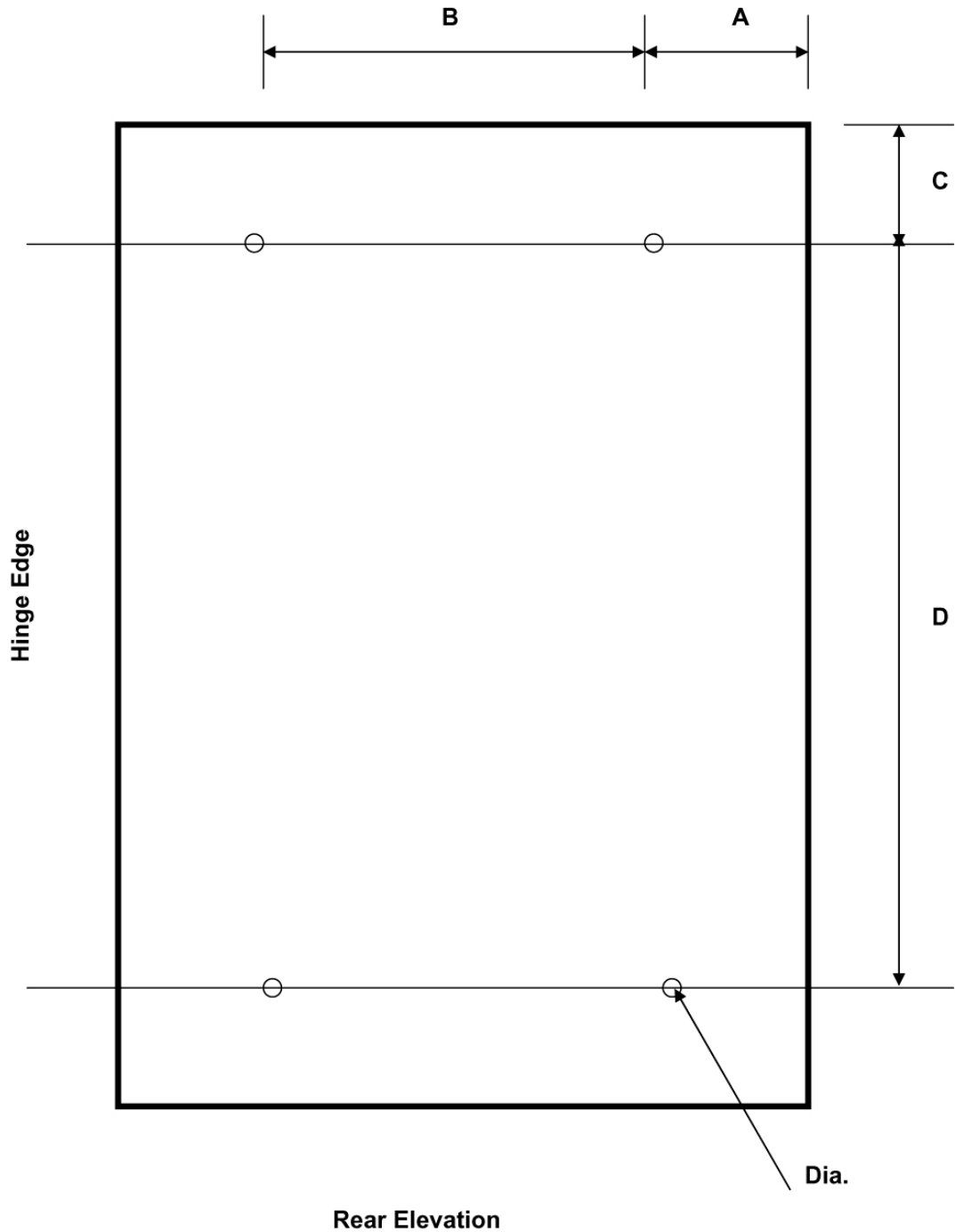
7 uniquely numbered security seals, supplied as standard,

Additional seals available  
Part number 2852875



Key Cabinet Fixing Hole Positions – 4 Hole

Product Code	A (mm)	B (mm)	C (mm)	D (mm)	Dia (mm)
219677	30	322	72	407	6



KC 4 Fixing Drg.doc