

Deep 48 Hook Double Strength Key Cabinet (With Euro cylinder lock)



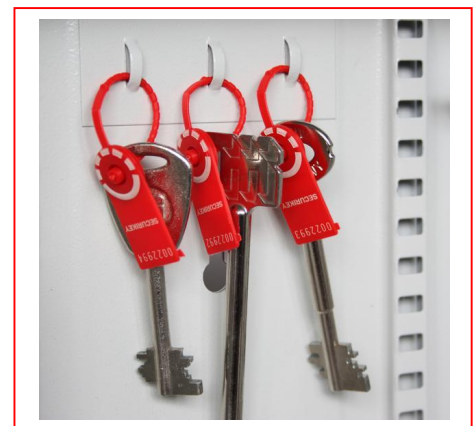
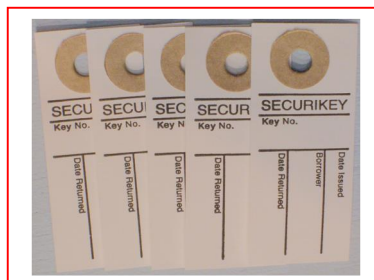
- Heavy duty key cabinet designed to meet the growing need for added security
- Increased depth for storing bunches of keys
- Supplied with standard 5-pin Euro single cylinder and 2 keys
- Use your own cylinder to incorporate the cabinet into an existing suited system
- 2.5mm steel cabinet with flush closing door to resist forced entry
- Adjustable colour coded and numbered hook bars allow the layout to be customised
- Ingenious key tabs are designed to hang so that the number is always visible
- Includes 5 security seals and loops to secure keys that require clear evidence of tampering or removal
- Key locations can be recorded on the control index which is removable for added security
- Durable Light Grey paint finish will suit most environments
- Cylinder can be easily changed in seconds to ensure total security

	Height	Width	Depth
483115	355mm	300mm	140mm

Key Cabinet Accessories

219655 Key Tags . Supplied in bags of 100. 20 of each colour Blue Red, Yellow, Black & Green. (Numbers not included)

219857 Key Location Cards - An ideal way to control the issue and return of keys. The key user signs a tab which is then hung in place of the borrowed key. A 'spot check' of 'keys out' can be made in seconds. On return of the borrowed key the tab can be filed for future reference



Security Seals & Loops

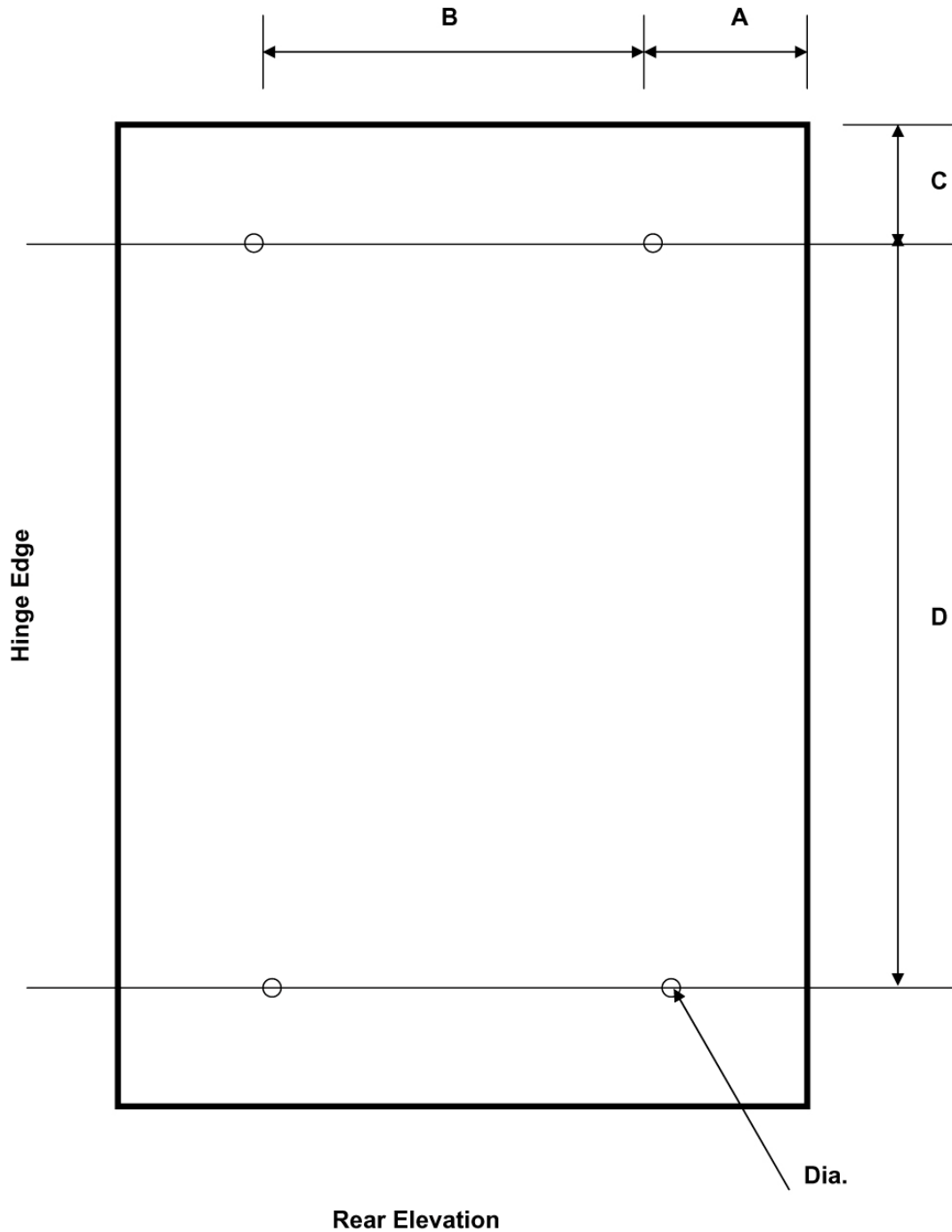
5 uniquely numbered security seals, supplied as standard,

Additional seals available
Part number 2852875



Key Cabinet Fixing Hole Positions – 4 Hole

Product Code	A (mm)	B (mm)	C (mm)	D (mm)	Dia (mm)
483115	80	220	30	325	5



KC 4 Fixing Drg.doc