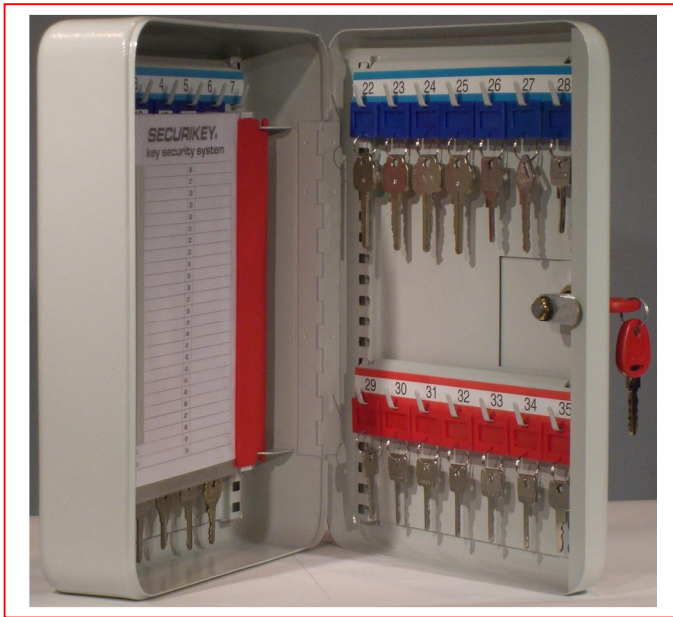


# 35 Hook Key Cabinet (With cylinder lock)



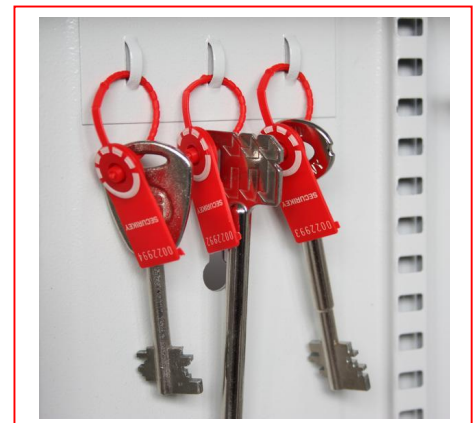
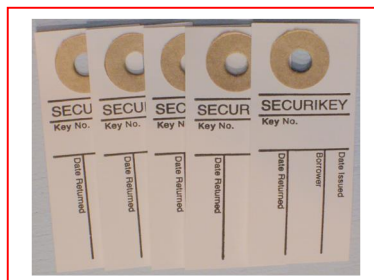
- Loose keys are lost keys - Control them with a key management system
- 1.5mm steel cabinet with flush closing rim to resist forced entry
- Adjustable colour coded and numbered hook bars allow the layout to be customised
- Ingenious key tabs are designed to hang so that the number is always visible
- Includes 5 security seals and loops to secure keys that require clear evidence of tampering or removal
- Key locations can be recorded on the control index which is removable for added security
- Durable Light Grey paint finish will suit most environments
- Supplied with security lock and 2 keys

	Height	Width	Depth
219778	320mm	245mm	80mm

## Key Cabinet Accessories

**219655** Key Tags . Supplied in bags of 100. 20 of each colour Blue Red, Yellow, Black & Green. (Numbers not included)

**219857** Key Location Cards - An ideal way to control the issue and return of keys. The key user signs a tab which is then hung in place of the borrowed key. A 'spot check' of 'keys out' can be made in seconds. On return of the borrowed key the tab can be filed for future reference



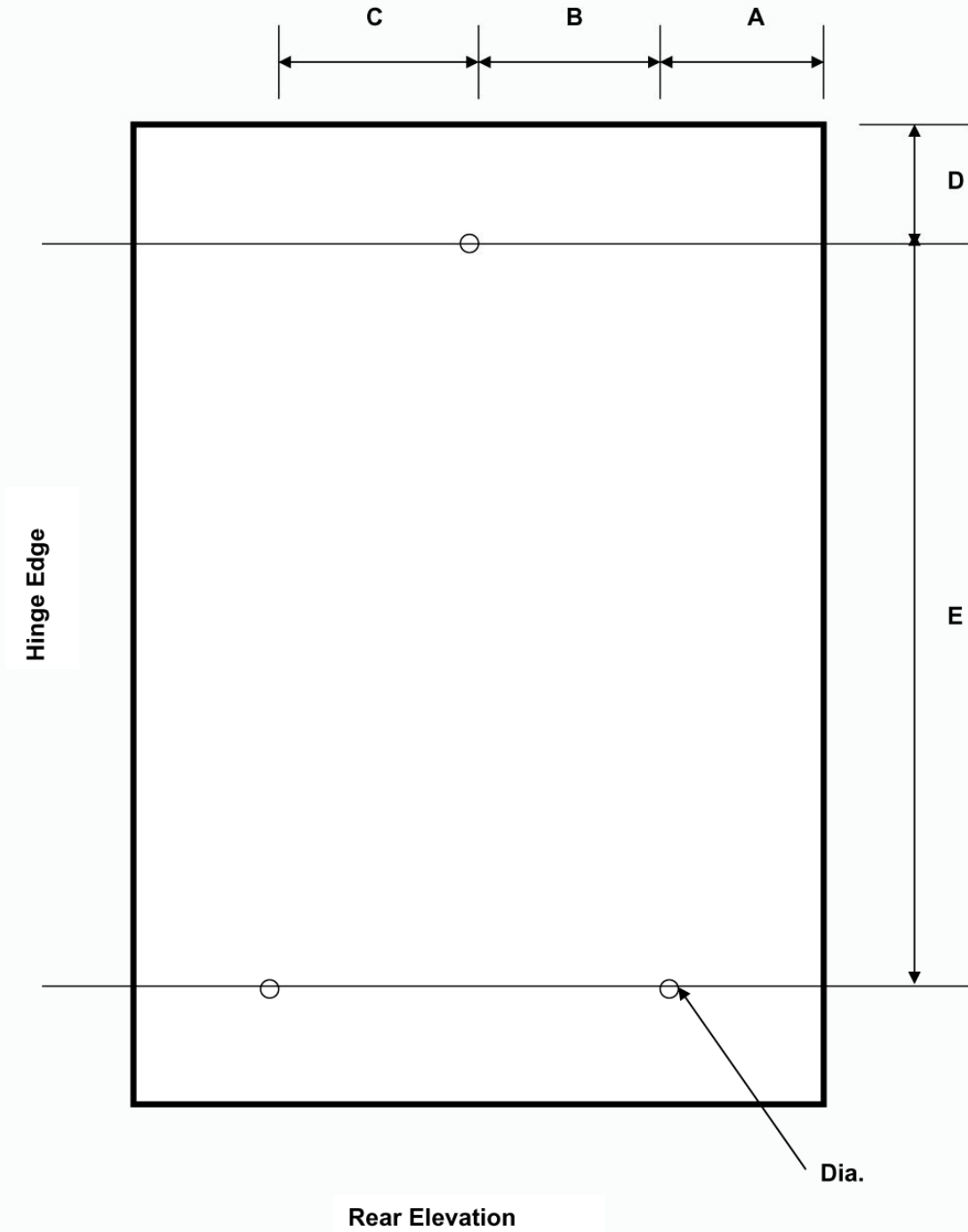
## Security Seals & Loops

5 uniquely numbered security seals, supplied as standard,

Additional seals available  
Part number 2852875

Key Cabinet Fixing Hole Positions – 3 Hole

Product Code	A (mm)	B (mm)	C (mm)	D (mm)	E (mm)	Dia (mm)
219778	80	39	39	100	142	5



KC 3 Fixing Drg.doc