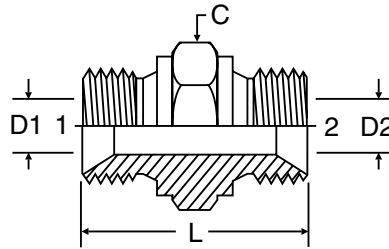


HMK4

Union
60° Cone / 60° Cone

Mates with 92, B1, B2 and B4 style hose fitting



TUBE FITTING PART #	END SIZE		C HEX (mm)	D1 DRILL (mm)	D2 DRILL (mm)	L (mm)	STANDARD Dynamic Pressure (x 1,000 PSI)		
	1 BSPP	2 BSPP					-S	-SS	-B
	2HMK4	1/8-28					1/8-28	14	3.5
4-2HMK4	1/4-19	1/8-28	19	4.7	3.5	28.0	5.1		
4HMK4	1/4-19	1/4-19	19	4.7	4.7	31.5	5.1		
6-4HMK4	3/8-19	1/4-19	22	7.9	4.7	33.2	5.1		
6HMK4	3/8-19	3/8-19	22	7.9	7.9	34.7	2.9		
8-4HMK4	1/2-14	1/4-19	27	11.1	4.7	36.7	2.9		
8-6HMK4	1/2-14	3/8-19	27	11.1	7.9	38.2	2.9		
8HMK4	1/2-14	1/2-14	27	11.1	11.1	40.7	2.9		
10-8HMK4	5/8-14	1/2-14	30	14.3	11.1	43.2	2.9		
10HMK4	5/8-14	5/8-14	30	14.3	14.3	45.2	2.9		
12-4HMK4	3/4-14	1/4-19	32	16.7	4.7	39.2	2.9		
12-6HMK4	3/4-14	3/8-19	32	16.7	7.9	40.7	2.9		
12-8HMK4	3/4-14	1/2-14	32	16.7	11.1	43.2	2.9		
12-10HMK4	3/4-14	5/8-14	32	16.7	14.3	45.2	2.9		
12HMK4	3/4-14	3/4-14	32	16.7	16.7	45.2	2.9		
16-8HMK4	1-11	1/2-14	41	22.2	11.1	46.9	1.7		
16-10HMK4	1-11	5/8-14	41	22.2	14.3	48.9	1.7		
16-12HMK4	1-11	3/4-14	41	22.2	16.7	48.9	1.7		
16HMK4	1-11	1-11	41	22.2	22.2	51.9	1.7		
20-12HMK4	1 1/4-11	3/4-14	50	28.6	16.7	57.4	1.5		
20-16HMK4	1 1/4-11	1-11	50	28.6	22.2	60.4	1.5		
20HMK4	1 1/4-11	1 1/4-11	50	28.6	28.6	61.4	1.5		
24-16HMK4	1 1/2-11	1-11	55	33.3	22.2	64.4	1.5		
24-20HMK4	1 1/2-11	1 1/4-11	55	33.3	28.6	65.4	1.5		
24HMK4	1 1/2-11	1 1/2-11	55	33.3	33.3	67.4	1.5		
32-24HMK4	2-11	1 1/2-11	70	46.0	33.3	72.9	1.0		
32HMK4	2-11	2-11	70	46.0	46.0	76.4	1.0		