

**EXCELON® Series 74
General Purpose Filter
3/8", 1/2", 3/4" Port Sizes**

- **EXCELON design allows in-line or modular installation**
- **Quick release bayonet bowl**
- **High efficiency water and particle removal**
- **Particle removal per ISO 8573-1, Class 5 and Class 3**
- **Optional service element indicator**



Technical Data

Fluid: compressed air

Maximum Pressure:

Transparent bowl: 10 bar

Metal bowl: 17 bar

Operating Temperature*:

Transparent bowl: -20° to 50°C

Metal bowl: -20° to 80°C

* Air supply must be dry enough to avoid ice formation at temperatures below 2°C.

Manual Drain Connection:

7/16" x 24 TPI (1/4" male OD tube)

Automatic Drain Connection: 1/8 BSP

Automatic drain minimum operating conditions:

Pressure: 0,7 bar

Flow: 0,25 dm³/s

Typical flow with a 40 µm element at 6,3 bar inlet pressure and 0,5 bar pressure drop:

83 dm³/s

Materials:

Body: Aluminium

Bowl:

Transparent: Polycarbonate with zinc bowl guard

Metal: Aluminium

Metal bowl liquid level indicator lens: Transparent nylon

Element: Sintered plastic

Elastomers: Neoprene and Nitrile

Optional service life indicator:

Body: Transparent nylon

Internal parts: Acetal

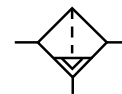
Spring: Stainless steel

Elastomers: Nitrile

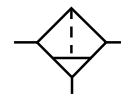
Ordering Information

See *Ordering Information* on following pages.

ISO Symbols



Automatic Drain

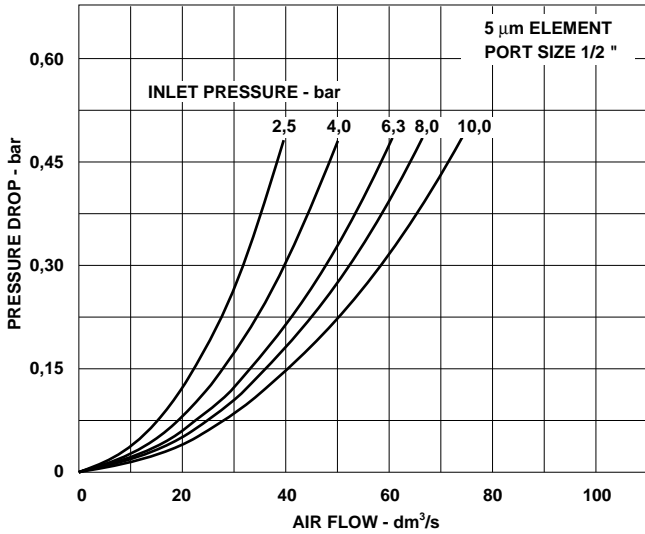


Manual Drain

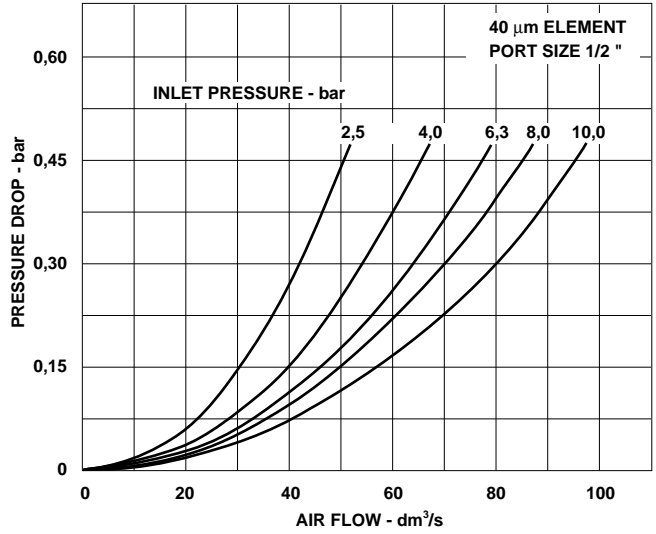


Typical Performance Characteristics

FLOW CHARACTERISTICS



FLOW CHARACTERISTICS



Ordering Information. Models listed include ISO G parallel threads, 40µm elements and transparent bowl with guard.

Drain Type	Port Size	Model	Flow* dm ³ /s	Weight kg
Automatic	G3/8	F74G-3GN-AP3	68	0,83
	G1/2	F74G-4GN-AP3	83	0,81
	G3/4	F74G-6GN-AP3	83	0,79
Manual	G3/8	F74G-3GN-QP3	68	0,83
	G1/2	F74G-4GN-QP3	83	0,81
	G3/4	F74G-6GN-QP3	83	0,79

* Approximate flow with a 40 µm element at 6,3 bar inlet pressure and 0,5 bar pressure drop.

Alternative Models

F 7 4 G - ★ ★ ★ - ★ ★ ★

Threads	Substitute
PTF	A
ISO Rc taper	B
ISO G parallel	G

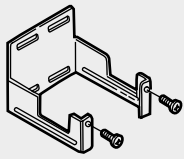

Service Life Indicator	Substitute
With	D
Without	N

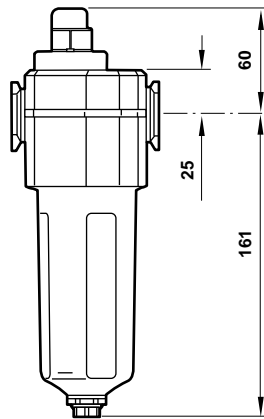
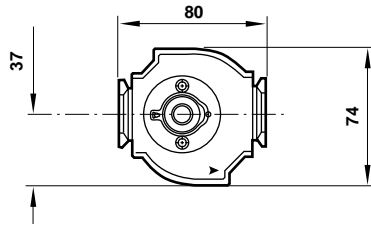
Element	Substitute
5 µm	1
40 µm	3

Bowl	Substitute
Metal with liquid level indicator	D
Transparent with guard	P

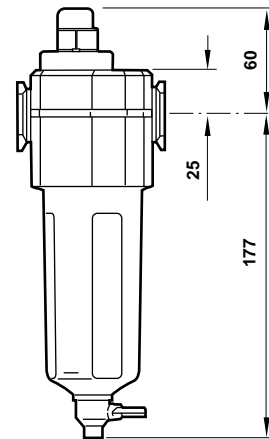
Drain	Substitute
Automatic	A
Manual 1/4 turn	Q

Accessories

 Wall Mounting Bracket 4324-50	 Service Life Indicator 5797-50



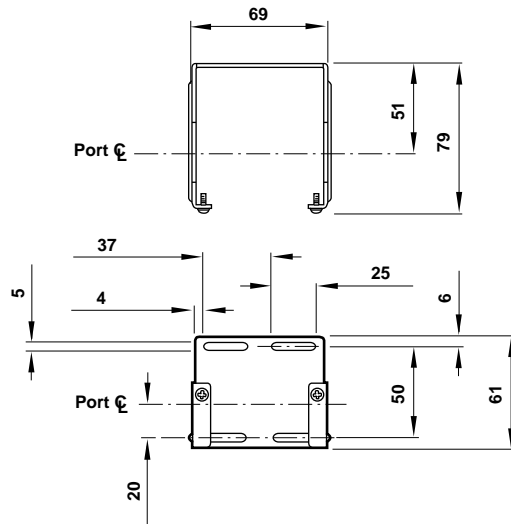
Automatic Drain



1/4 Turn Manual Drain

Bracket Mounting

Use 5mm screws to mount bracket to wall.



Bracket Kit Reference

Model	Part No.
All Models	4324-50

Service Kits

Item	Type	Part Number
Service kit	Seal & Gasket	4380-700
Replacement elements	5 µm	4338-04
	40 µm	4338-05
Liquid level lens kit	Prismatic	4380-050
Replacement drains	Automatic (G1/8 outlet)	3000-97
	Manual, 1/4 turn	619-50

Service kit includes louvre/element seal, drain seal, bowl seal.



Warning

These products are intended for use in industrial compressed air systems only. Do not use these products where *pressures* and *temperatures* can exceed those listed under '**Technical Data**'.

Before using these products with fluids other than those specified, for non-industrial applications, life-support systems, or other applications not within published specifications, consult NORGREN.

Through misuse, age, or malfunction, components used in fluid power systems can fail in various modes. The system designer is warned to consider the failure modes of all component parts used in fluid power systems and to provide adequate safeguards to prevent personal injury or damage to equipment in the event of such failure.

System designers must provide a warning to end users in the system instructional manual if protection against a failure mode cannot be adequately provided.

System designers and end users are cautioned to review specific warnings found in instruction sheets packed and shipped with these products.