

- Ideal for branching off primary 651/652 series air prep manifold to add additional products
- 1/4 G (651) or 3/8 G (652) ports on the front and back provide additional flexibility to attach or branch off the main manifold
- It can also be used to feed auxiliary air to air prep assemblies that require additional air capacity, such as a bank of manifold regulators



Performance Data			
		651	652
Port sizes	Left, Right & Bottom	1/4 & flange	1/2 & flange
	Front & Back	1/4	3/8
Thread type		G (NPTF in option)	
Top Port (for Pressure Switch/Pressure Sensor)		pad mount	
Maximum pressure (bar)		16	
Fluid		air or inert gas	
Weight (kg)		0,188	0,331

Materials in contact with fluid	
Body	Aluminium
Body covers	Polyamide

## HOW TO ORDER

### Diverter Block

**G 651 A D 0 0 2 C A00 0 0**

[2D/3D CAD models - In 3D](#)

#### Thread connection

G = ISO 228/1-G\*  
8 = NPTF

#### Product series

651  
652

#### Revision letter

A

#### Product type

D = Diverter Block

#### Options\*

A00 = Without option  
101 = Side Mounting Brackets  
117 = ATEX zones 1-21

#### Pressure switch interface

C = Provisioned for 349 pressure switch pad mount

#### Port size

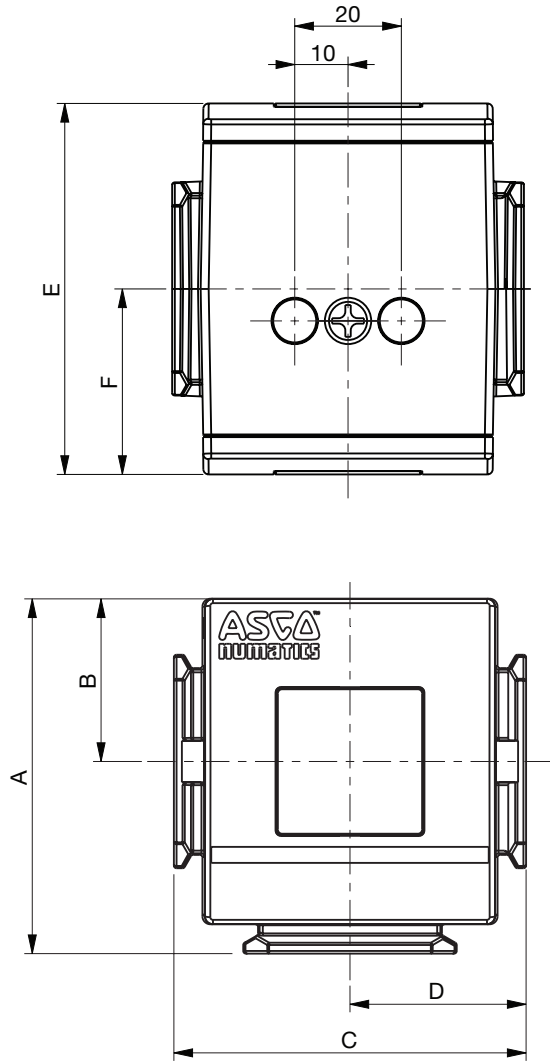
2 = 1/4 (651 Series)  
4 = 1/2 (652 Series)

\* If multiple options are required, please use the on-line CAD configurator on the website to generate the part number ([www.asco.com](http://www.asco.com)).

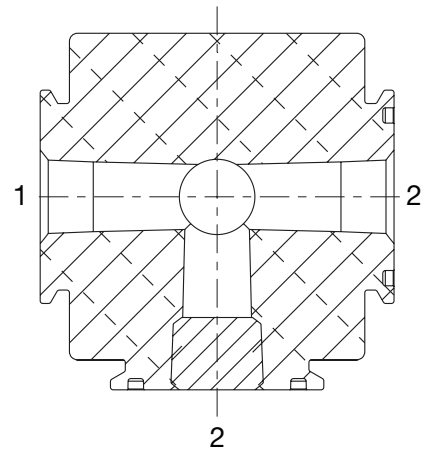
Dimensions: mm

Dimensional Drawing - 651/652 Series Diverter Block

[2D/3D CAD models](#) - In 3D



Cross Section - 651/652 Series Diverter Block



Series	A	B	C	D	E	F	G	H
651	54,4	25	50	25	58	29	10	20
652	66.5	30,5	66	33	70	35	10	20