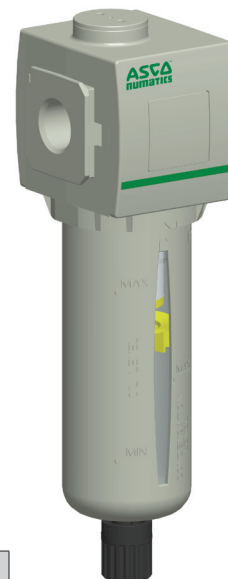


- Large selection of filtering capacities to remove particulate and water droplets from compressed air or inert gas
- Sintered polyethylene elements include 5 and 25 Microns
- Optional extended temperature range of -40°C to +80°C
- Innovative two position plastic drain with manual and semi-automatic functions. Additional drains include an automatic style (brass) and manual (stainless steel)
- Polycarbonate and Aluminium bowls with or without glass gauge, to meet industry all application requirements
- Threaded ports allow for individual or modular mounting
- Air Purity Class according to ISO 8573-1: 2010



Performance Data				
Series	651		652	
Port sizes	1/8, 1/4		1/4, 3/8, 1/2	
Thread type	G (NPTF in option)			
Nominal flow - ISO 6358 P1 = 6,3 bar ΔP = 1 bar	1/8	Micron Rating	l/min (ANR)	l/min (ANR)
		5 μm	885	-
	25 μm	920	-	
	1/4	5 μm	1250	2020
		25 μm	1410	2250
	3/8	5 μm	-	2190
		25 μm	-	3390
	1/2	5 μm	-	2290
		25 μm	-	3700
	Maximum inlet pressure (bar)	Polycarbonate bowl		16
Aluminium bowl		16		
Ambient temperature range (°C)	-20 to +50			
Fluid temperature range (°C)	-20 to +50			
Fluid	air or inert gas			
Weight (kg)	w/Polycarbonate bowl	0,238	0,426	
	w/Aluminium bowl	0,382	0,553	

Materials in contact with fluid	
Body	Aluminium
Body covers	Polyamide
Seals	NBR
Filter element	Sintered polyethylene
Bowl	Polycarbonate or aluminium

Air Purity Class - ISO 8573-1: 2010	
5 μm	(5:8:4)
25 μm	(6:8:4)

HOW TO ORDER

Particulate Filter

G 651 A B B P 2 J A00 0 N

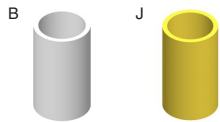
Thread connection
G = ISO 228/1-G*
8 = NPTF

Product series
651
652

Revision letter
A

Product type
B = Filter - Particulate

Elements
B = 5 µm (White)
J = 25 µm (Yellow)



Bowl type
K = Metal bowl without sight gauge
L = Metal bowl with sight gauge (glass)
P = Polycarbonate bowl with bowl guard



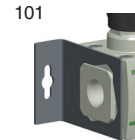
Drain type

0 = Without
A = Auto drain normally open
N = Manual/Semi-automatic drain
Q = Manual drain - Stainless steel



Options***

A00 = Without
101 = Side Mounting Brackets
105 = High temperature (+80°C)
106 = Low temperature (-40°C)**
109 = FPM seals
117 = ATEX zones 1-21 ⚠
202 = 105 + 109
2A9 = 105 + 106



Port size

1 = 1/8 (651 Series)
2 = 1/4 (651 or 652 Series)
3 = 3/8 (652 Series)
4 = 1/2 (652 Series)

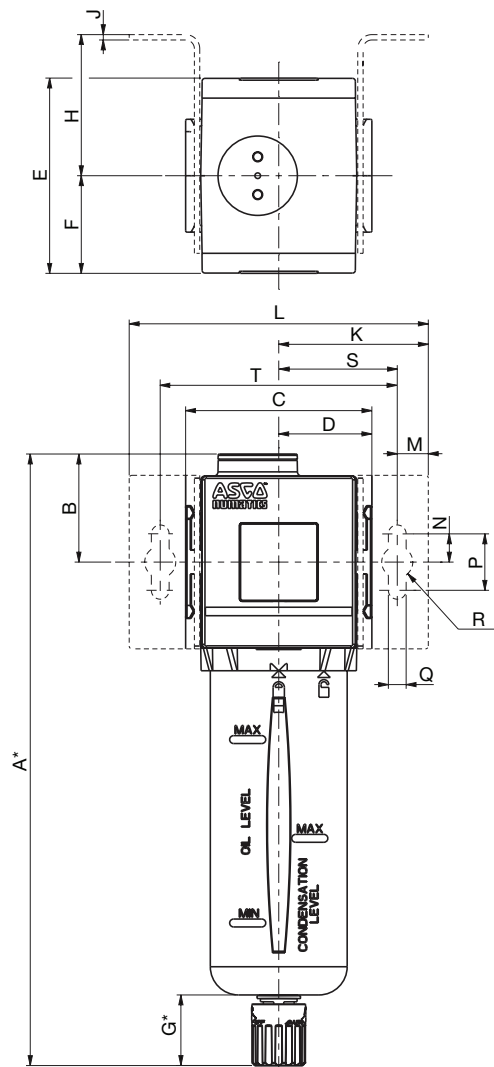
* Conforms to ISO standards 1179-1

** Compressed air must be dry enough so no ice formation is present on the product.
All bowls should be emptied prior to ambient temperatures dropping below 0°C.

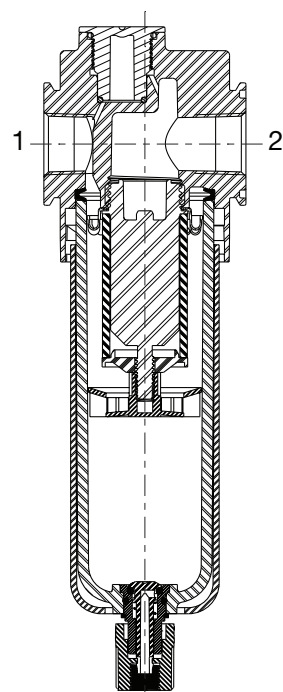
*** If multiple options are required, please use the on-line CAD configurator on the website to generate the part number (www.asco.com).

Dimensions: mm

Dimensional Drawing - 651/652 Series Particulate Filter



Cross Section - 651/652 Series Particulate Filter



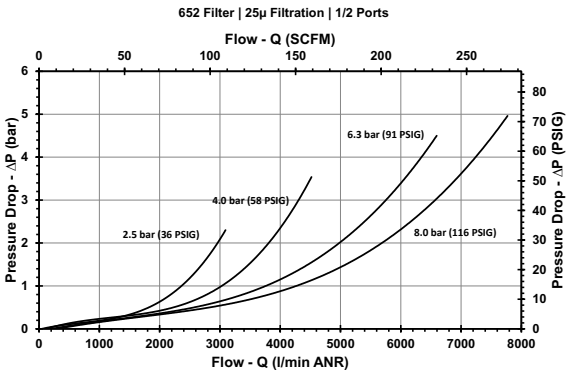
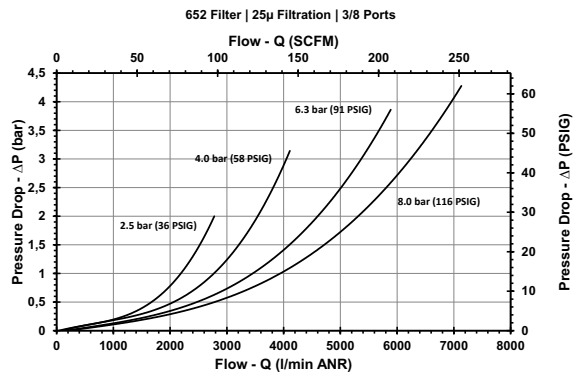
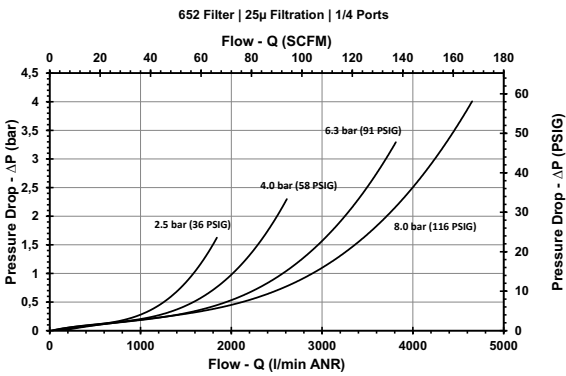
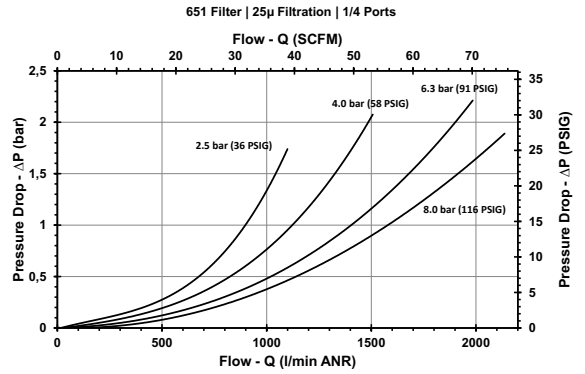
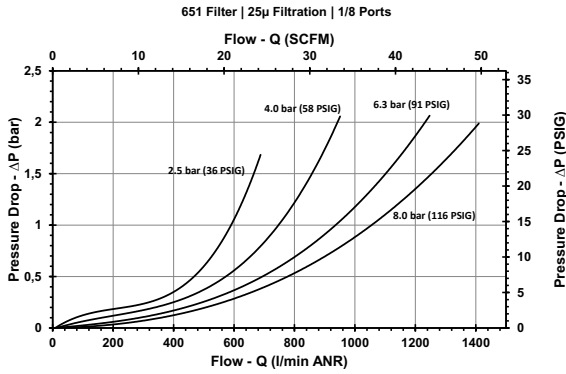
To remove bowl allow:
651 - 44 mm
652 - 75 mm
from the bottom
of the bowl drain.

Series	A	B	C	D	E	F	G	H	J
651	197	33,8	50	25	58	29	25	44,5	1,27
652	217	38,3	66	33	69	34,5	25	50	1,9

Series	K	L	M	N	P	Q	ØR	S	T
651	46	92	11	10	20	6,3	11	35	70
652	53	106	11	10	20	6,3	11	42	84

* Variable dimension based on type of drain that is specified. If an Automatic Drain is specified, add another 5 mm to "G " dimension, which also adds 5 mm to the "A" dimension.

Particulate Filter Flow Charts



01801GB-2016/R01
Availability, design and specifications are subject to change without notice. All rights reserved.

All leaflets are available on: www.asco.com

Pneutrol International Ltd are Platinum Distributors for ASCO Numatics