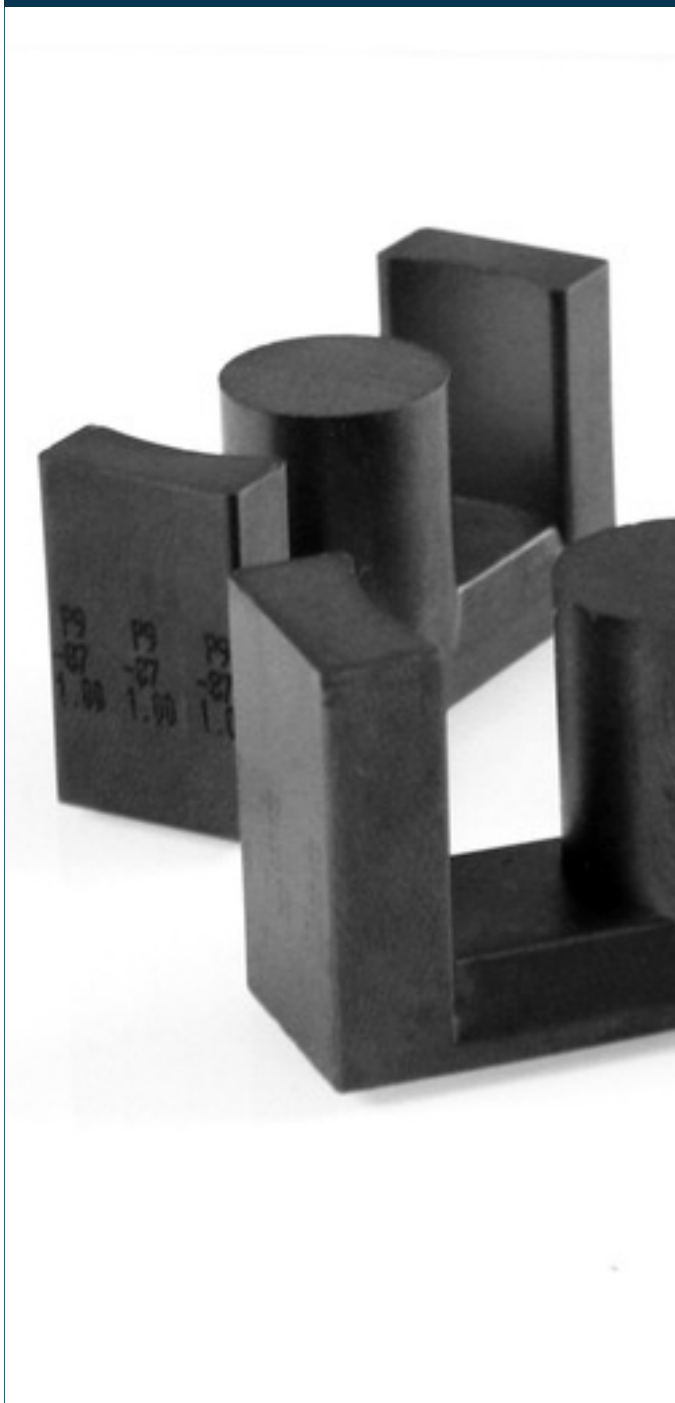


Core
FS-1ETD-5922-00



Advantages

Insertion of air gaps on request

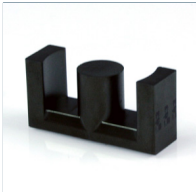
On request wound inductors to EN61558-2-16 standard an EN60950 or vacuum potted

Cost saving and easy compilation of components for pattern construction through unification

Applications

Transformers and reactors in switch mode power supplies

Approvals



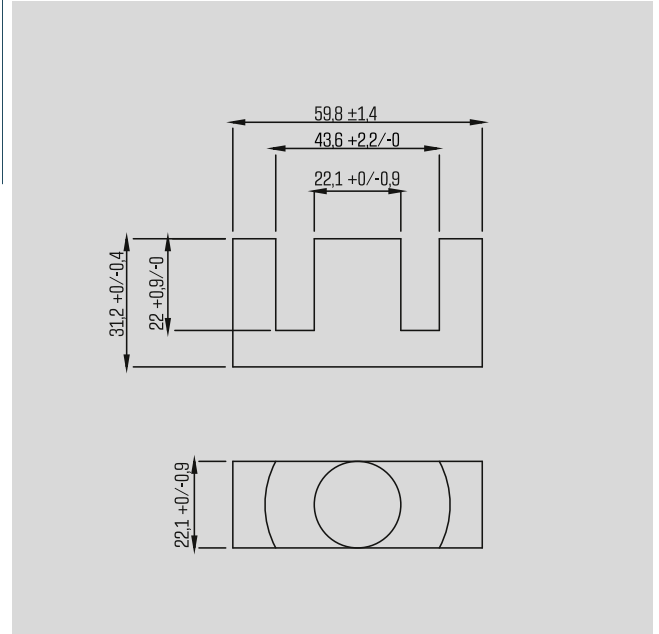
Core

FS-1ETD-5922-00

Type		FS-1ETD-5922-00
Electrical data	General data	
	for housing	FS-1ETD-5922
	Magnetic characteristics	
		>210°C
		<450 kW/m³
		21A/m @25°C
		13A/m @100°C
		>380
	Ae	368.0 mm²
		368.0 mm²
	Le	139.0 mm
		5300 nH ± 25%
		0 nH ± 10%
		2593 nH ± 10%
		1588 nH ± 10%
		830 nH ± 10%
		508 nH ± 10%
	381 nH ± 10%	
	311 nH ± 10%	
	266 nH ± 10%	
Operating data		
	25 kHz - 200 kHz	
Notes		
	ISO 2768-m	
Order numbers		
Order Number	FS-1ETD-5922-00	

Type		FS-1ETD-5922-00
Notes		
Remark		

30 Mechanical data



Subjects to change.