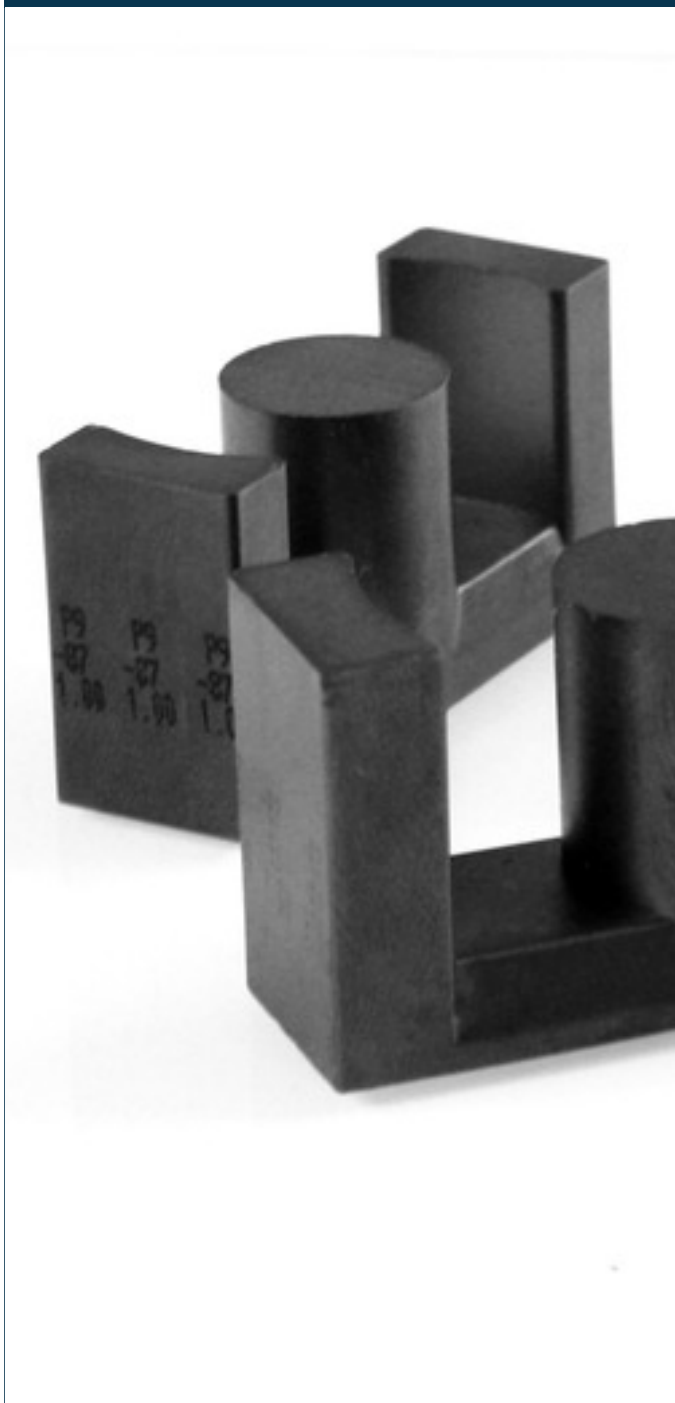


Core  
**FS-1ETD-3913-00**



## Advantages

Insertion of air gaps on request

On request wound inductors to EN61558-2-16 standard an EN60950 or vacuum potted

Cost saving and easy compilation of components for pattern construction through unification

## Applications

Transformers and reactors in switch mode power supplies

## Approvals

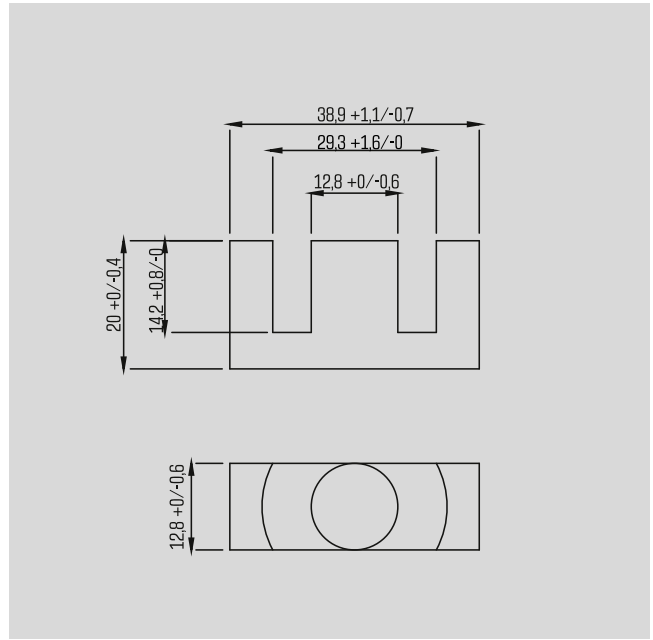


# Core FS-1ETD-3913-00

Type		FS-1ETD-3913-00
Electrical data	General data	
	for housing	FS-1ETD-3913
	Magnetic characteristics	
		>210°C
		<450 kW/m³
		21A/m @25°C
		13A/m @100°C
		>380
	Ae	125.0 mm²
		123.0 mm²
	Le	92.2 mm
		2700 nH ± 25%
		0 nH ± 10%
		1062 nH ± 10%
		639 nH ± 10%
	326 nH ± 10%	
	196 nH ± 10%	
	146 nH ± 10%	
	118 nH ± 10%	
	100 nH ± 10%	
Operating data		
		25 kHz - 200 kHz
Notes		
		ISO 2768-m
Order numbers		
<b>Order Number</b>		<b>FS-1ETD-3913-00</b>

Type		FS-1ETD-3913-00
Notes		
Remark		

30 Mechanical data



Subjects to change.