



Fire & Smoke Resistant Connector

The plastic rectangular solution offering an excellent fire & smoke resistance for indoor applications.

Compliant to railway standards



Tested according to NFF61030
Tested according to NFF16101 & NFF16102
(fire & smoke standards)

**Compact design
& up to 36 contacts**



Ideal for tight space integration & high density
contact applications

Excellent durability



500 mating / unmating

Standardization oriented

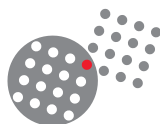


Compatible with standard AWG16 contacts

A wide range available



Plug & receptacle with or without hood
Panel mount receptacle
PCB receptacle



SMS Flame Retardant



Technical features

Mechanical

- **Insulating material:** Polyamid
- **Endurance:** 500 mating/unmating
- **Colour:** grey
black - Boardmount versions
- **PCB contacts (for SMS GE33, 43, 53, 63):**
Min. 0.4µ gold all over, over nickel

Electrical

- **Current rating per contact:** 13 Amps
- **Insulation resistance:** 5000 MΩ
- **Withstanding voltage:** 2000 Vac
- **Operating voltage:** 500 V (according to UL1977)

Environmental

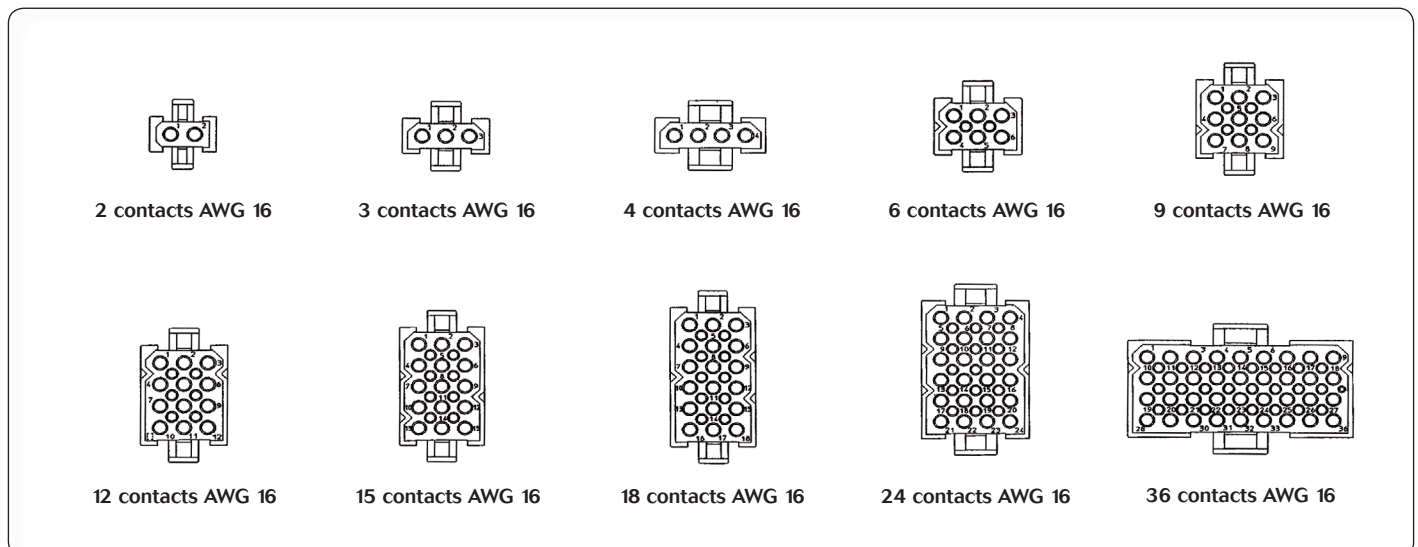
- **Operating temperature:** -40°C to +105 °C
- **Sealing (mated conditions):** IP40
- **Flammability rating:**
 - . I3F2 according to NFF16101/16102 standards
 - . PCB version: I2F3 according to NFF16101/16102 standards



Ordering information

Connector family	SMS	4	PDH3
	SMS	36	RD3
Number of contacts: 2, 3, 4, 6, 9, 12, 15, 18, 24, 36			
Design variation			
PDH3	Flame Retardant plug with integrated strain relief hood] Contacts to be ordered separately
RDH3	Flame Retardant receptacle with integrated strain relief hood		
PD3	Flame Retardant plug without strain relief hood		
RD3	Flame Retardant receptacle without strain relief hood		
R3	Flame Retardant panel mount receptacle] PCB contacts included
GE33	Straight boardmount with female PCB contacts		
GE43	Straight boardmount with male PCB contacts		
GE53	Right angle boardmount with female PCB contacts		
GE63	Right angle boardmount with male PCB contacts		

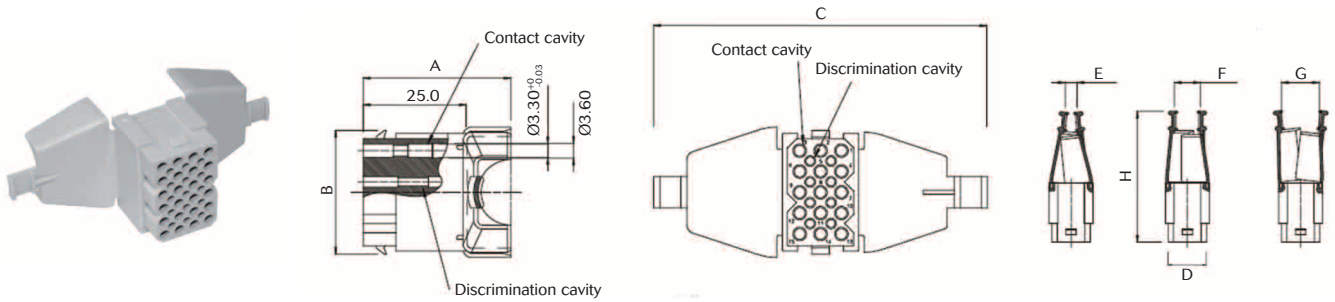
Contact layouts





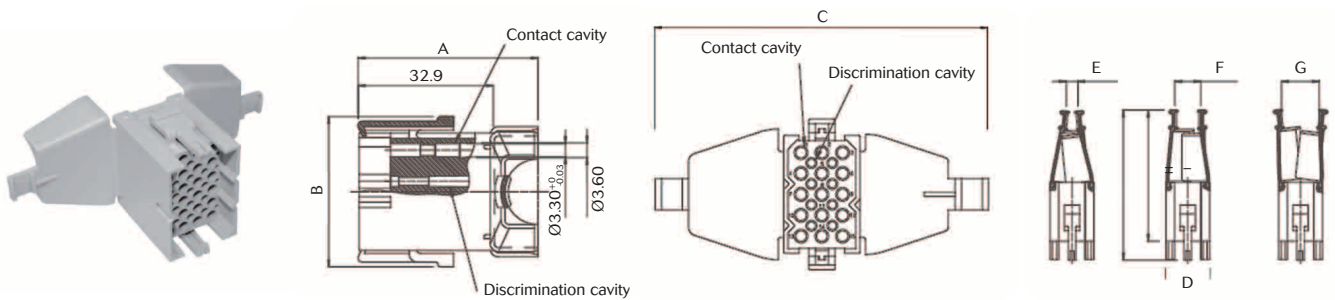
Range presentation

Cable receptacle with integrated strain relief hood (Delivered without contacts)



Part numbers	Number of contact cavities	Number of discrimination cavities	A	B	C	D	E	F	G	H	Cable range
SMS2RDH3	2	0	31.6	9.9	64.8	11.1	0.5	7.4	8.4	49.2	0.5 - 8.4
SMS3RDH3	3	0	35.1		69.0	16.2	0.8	4.1	7.3		0.8 - 7.3
SMS4RDH3	4	0	38.2		74.4	21.2	1.5	5.4	10.0		1.5 - 10.0
SMS6RDH3	6	2	34.6	15.0	72.6	16.2	1.7	6.8	9.2	50.9	1.7 - 9.2
SMS9RDH3	9	4	35.8	20.0	75.3		3.9	9.3	12.3	52.2	3.9 - 14.3
SMS12RDH3	12	6	38.1	25.1	72.0		4.0	10.0	15.0	52.7	4.0 - 15.0
SMS15RDH3	15	8	35.9	30.2	81.3	16.2	5.0	11.0	16.2	55.2	5.0 - 16.2
SMS18RDH3	18	10	36.1	35.3			5.8	12.5	20.3		5.8 - 20.3
SMS24RDH3	24	15	39.7				90.4	21.2	7.1		12.4
SMS36RDH3	36	24	54.6	25.1	128.0	46.6	8.8	13.0	24.5	63.3	8.8 - 24.5

Cable plug with integrated strain relief hood (Delivered without contacts)



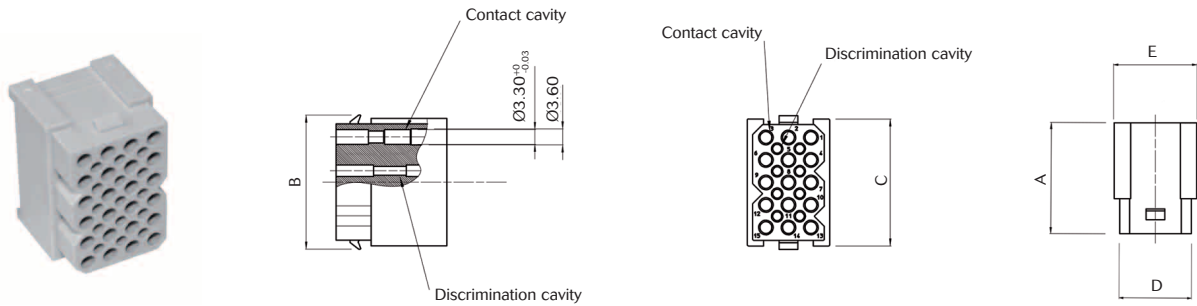
Part numbers	Number of contact cavities	Number of discrimination cavities	A	B	C	D	E	F	G	H	I	Cable range
SMS2PDH3	2	0	39.5	16.4	64.8	14.1	0.5	7.4	8.4	57.1	49.2	0.5 - 8.4
SMS3PDH3	3	0	43.0		69.0	18.6	0.8	4.1	7.3			0.8 - 7.3
SMS4PDH3	4	0	46.1		74.4	23.7	1.5	5.4	10.0			1.5 - 10.0
SMS6PDH3	6	2	42.5	21.5	72.6	18.6	1.7	6.8	9.2	58.8	50.9	1.7 - 9.2
SMS9PDH3	9	4	43.7	26.7	75.3		3.9	9.3	12.3	60.1	52.2	3.9 - 14.3
SMS12PDH3	12	6	46.0	31.7	72.0		4.0	10.0	15.0	60.6	52.7	4.0 - 15.0
SMS15PDH3	15	8	43.8	36.7	81.3	18.6	5.0	11.0	16.2	63.1	55.2	5.0 - 16.2
SMS18PDH3	18	10	44.0	41.8			5.8	12.5	20.3			5.8 - 20.3
SMS24PDH3	24	15	47.6				90.4	23.7	7.1			12.4
SMS36PDH3	36	24	62.5	31.7	128.0	49.1	8.8	13.0	24.5	71.2	63.3	8.8 - 24.5

Note : 1. It is recommended to use unipar cable tie (not delivered by Souriau)
2. All dimensions are in mm

SMS Flame Retardant

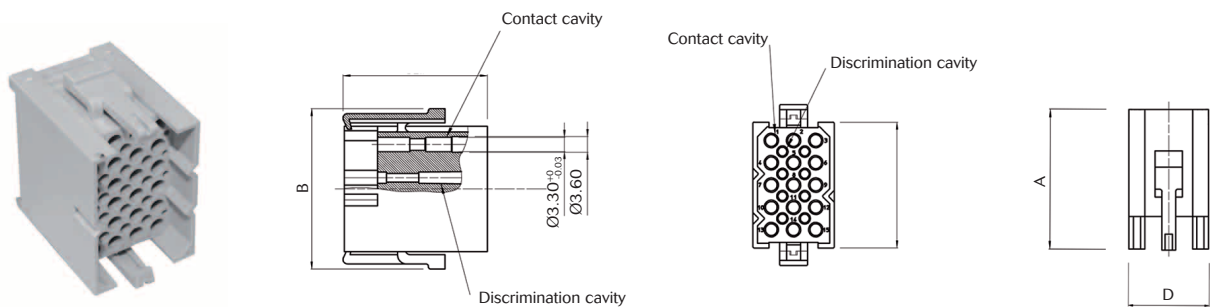


Cable receptacle without strain relief hood (Delivered without contacts)



Part numbers	Number of contact cavities	Number of discrimination cavities	A	B	C	D	E
SMS2RD3	2	0	25.0	9.9	8.4	11.1	14.1
SMS3RD3	3	0		9.9	8.4	16.2	18.6
SMS4RD3	4	0		9.9	8.4	21.2	23.7
SMS6RD3	6	2		15.0	13.4	16.2	18.6
SMS9RD3	9	4		20.0	18.5	16.2	18.6
SMS12RD3	12	6		25.1	23.6	16.2	18.6
SMS15RD3	15	8		30.2	28.7	16.2	18.6
SMS18RD3	18	10		35.3	33.8	16.2	18.6
SMS24RD3	24	15		35.3	33.8	21.2	23.7
SMS36RD3	36	24		25.1	23.6	46.6	49.1

Cable plug without strain relief hood (Delivered without contacts)

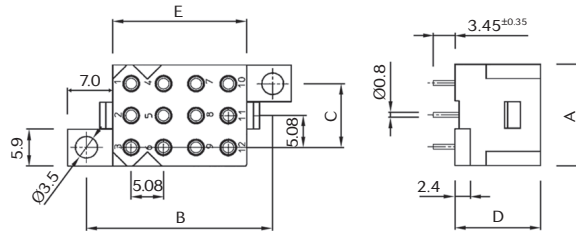
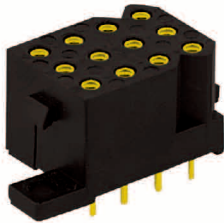


Part numbers	Number of contact cavities	Number of discrimination cavities	A	B	C	D
SMS2PD3	2	0	32.7	16.4	8.4	14.1
SMS3PD3	3	0		16.4	8.4	18.6
SMS4PD3	4	0		16.4	8.4	23.7
SMS6PD3	6	2		21.5	13.4	18.6
SMS9PD3	9	4		26.7	18.5	18.6
SMS12PD3	12	6		31.7	23.6	18.6
SMS15PD3	15	8		36.7	28.7	18.6
SMS18PD3	18	10		41.8	33.8	18.6
SMS24PD3	24	15		41.8	33.8	23.7
SMS36PD3	36	24		31.7	23.6	49.1

Note : all dimensions are in mm

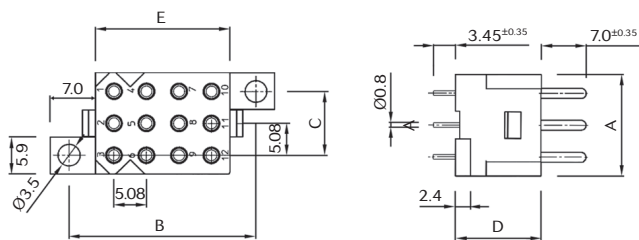
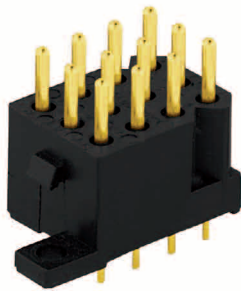


Straight boardmount receptacle delivered with female PCB contacts (SMS GE33)



Contacts (included)	Part numbers	Number of contact cavities	Number of discrimination cavities	A	B	C	D	E
Female contacts	SMS3GE33	3	0	16.2	14	10.2	13.4	5.9
	SMS6GE33	6	0		19.2			10.9
	SMS9GE33	9	4		24.2			16
	SMS12GE33	12	0		29.2			21.1
	SMS15GE33	15	8		34.3			26.1
	SMS18GE33	18	10		39.4			31.2
	SMS24GE33	24	0	21.2	39.4	15.2	31.2	
	SMS36GE33	36	0	46.5	15.2	54.6	20.9	

Straight boardmount receptacle delivered with male PCB contacts (SMS GE43)



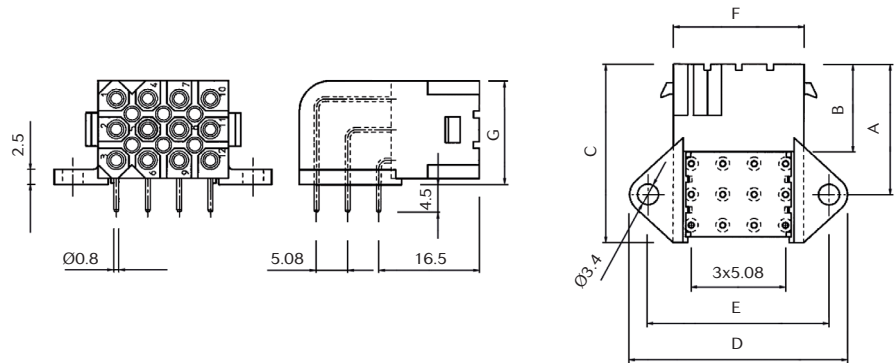
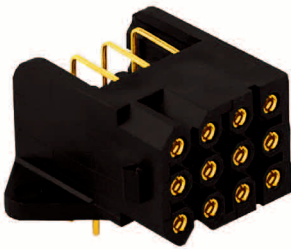
Contacts (included)	Part numbers	Number of contact cavities	Number of discrimination cavities	A	B	C	D	E
Male contacts	SMS3GE43	3	0	16.2	14	10.2	13.4	5.9
	SMS6GE43	6	0		19.2			10.9
	SMS9GE43	9	4		24.2			16
	SMS12GE43	12	0		29.2			21.1
	SMS15GE43	15	8		34.3			26.1
	SMS18GE43	18	10		39.4			31.2
	SMS24GE43	24	0	21.2	39.4	15.2	31.2	
	SMS36GE43	36	0	46.5	15.2	54.6	20.9	

Note : all dimensions are in mm

SMS Flame Retardant

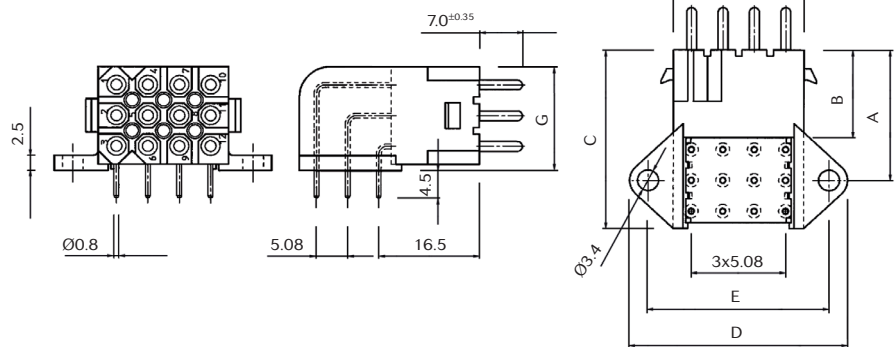
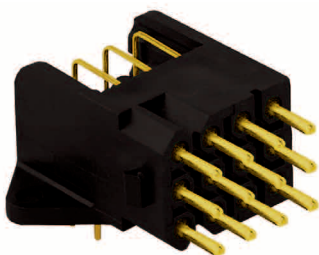


Right angle boardmount receptacle delivered with female PCB contacts (SMS GE53)



Contacts (included)	Part numbers	Number of contact cavities	Number of discrimination cavities	A	B	C	D	E	F	G
Female contacts	SMS3GE53	3	0	16.5	14.4	20.5	30.2	24.2	16.2	6.8
	SMS6GE53	6	0	19		24.5				11.9
	SMS12GE53	12	0	21.6		29.5	35.2	29.2	21.2	17.2
	SMS18GE53	18	10				45.4	39.4	31.2	

Right angle boardmount receptacle delivered with male PCB contacts (SMS GE63)



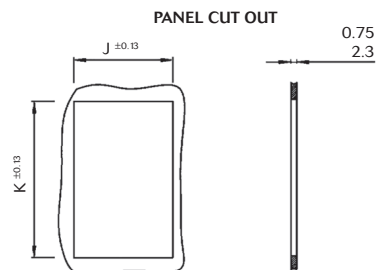
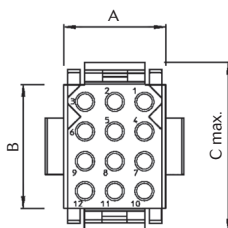
Contacts (included)	Part numbers	Number of contact cavities	Number of discrimination cavities	A	B	C	D	E	F	G
Male contacts	SMS3GE63	3	0	16.5	14.4	20.5	30.2	24.2	16.2	6.8
	SMS6GE63	6	0	19		24.5				11.9
	SMS12GE63	12	0	21.6		29.5	35.2	29.2	21.2	17.2
	SMS18GE63	18	10				45.4	39.4	31.2	

Note : all dimensions are in mm

SMS Flame Retardant

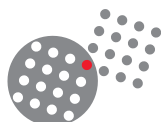


Panel mount receptacle (Delivered without contacts)



Part numbers	Number of contact cavities	A	B	C max.	J ^{±0.13}	K ^{±0.13}
SMS2R3	2	11.0	5.8	15.2	11.4	11.6
SMS3R3	3	16.2			16.5	
SMS4R3	4	21.2			21.7	
SMS6R3	6	16.2	10.9	20.3	16.5	16.7
SMS9R3	9		16.0	25.4		21.6
SMS12R3	12		21.1	30.5	16.7	26.7
SMS15R3	15		26.2	35.6		31.8
SMS18R3	18		31.2	40.6		36.9
SMS24R3	24	21.2	21.1	30.5	21.7	26.7
SMS36R3	36	46.6			47.1	

Note : all dimensions are in mm



SOURIAU
Connection Technology

For further information, visit our website www.railway-connectors.com
or contact us at contactindustry@souriau.com