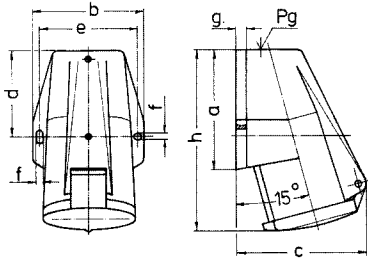


# CEEform receptacles

to DIN VDE 0623, EN 60309-2. Colour: Electric grey and/or code colour. Enclosure and insert made of **Amaplast**. Other voltages and frequencies available on request.

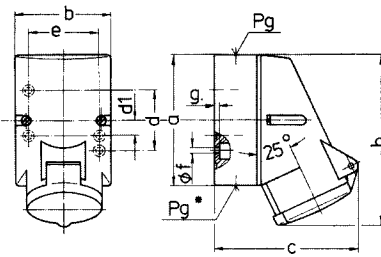


Drawing	Amp.	16			32			
		Poles			Poles			
1 MB 205	Dim. in mm	a	91	91	91	102	102	102
		b	73	79	87	89	89	94
		c	86	93	99	108	108	114
		d	55	55	56,4	62	62	62
		e	62	68	76	77,5	77,5	84
		f	5,3	5,3	5,3	5,3	5,3	5,3
		g	8	8	9	10	10	10
		h	132	132	132	153	153	153
		Pg	16	16	16	21	21	21
		Cond. cross section (mm²) min.-max.		1,5	1,5	1,5	2,5	2,5
Max. cable diam. (mm)		15,5	15,5	15,5	20,5	20,5	20,5	

**Receptacle TA**, external fixing, cable entry from top

▲ IP 44

Product group 1037. Type 1 shown.

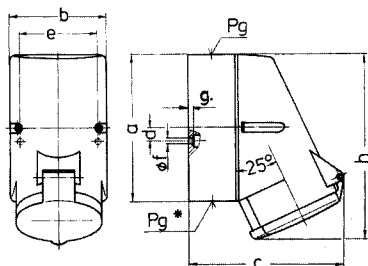


Drawing	Amp.	16			
		Poles			
1 MB 209	Dim. in mm	a	87	100	100
		b	64	75	75
		c	99	110	113
		d	40	—	—
		d1	50	59	59
		e	—	11	11
		f	4,5	5	5
		g	4	4	4
		h	115	125	128
		Pg	16	16	16
Pg*		for Pg 16 (blind) to be cut out			
Cond. cross section (mm²) min.-max.		1,5	1,5	1,5	
Max. cable diam. (mm)		15,5	15,5	15,5	

**Receptacle**, internal fixing, 1 cable entry at top and one blind entry (can be cut out) at bottom, enclosure for 4 and 5 pole versions can be turned 180°

▲ IP 44

Product group 1040. Type 100 shown.

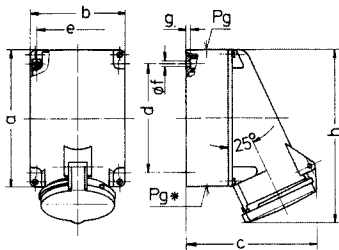


Drawing	Amp.	16		32			
		Poles		Poles			
1 MB 43	Dim. in mm	a	128	128	128	128	128
		b	84	84	84	84	84
		c	117	119	131	131	133
		d	11	11	11	11	11
		e	68	68	68	68	68
		f	5,3	5,3	5,3	5,3	5,3
		g	4	4	4	4	4
		h	144	145	158	158	160
		Pg	21	21	21	21	21
		Pg*		for 2x Pg 21 (blind) to be cut out		for 2x Pg 21 (blind) to be cut out	
Cond. cross section (mm²) min.-max.		1,5	1,5	2,5	2,5	2,5	
Max. cable diam. (mm)		20,5	20,5	20,5	20,5	20,5	

**Receptacle**, internal fixing, 1 cable entry at top, two blind cable entries (can be cut out) at the bottom, enclosure can be turned 180°, with 5 blind holes for mounting special terminals if required (page 36)

▲ IP 44

Product group 1041. Type 1419 shown.

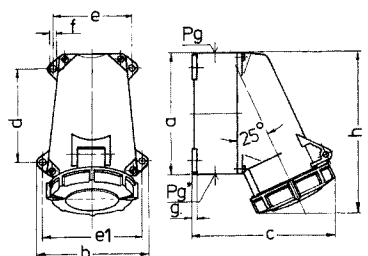


Drawing	Amp.	63			
		Poles			
1 MB 213	Dim. in mm	a	170	170	170
		b	118	118	118
		c	164	164	164
		d	136	136	136
		e	104	104	104
		f	6,1	6,1	6,1
		g	6	6	6
		h	216	216	216
		Pg	29	29	29
		Pg*		for 2x Pg 29 (blind) to be cut out	
Cond. cross section (mm²) min.-max.		6	6	6	
Max. cable diam. (mm)		27	27	27	

**Receptacle Soft-Contact**, internal fixing, 1 cable entry at top and two blind cable entries (can be cut out) at bottom, enclosure can be turned 180°, with 6 blind holes for mounting special terminals if required (page 36)

▲ IP 44

Product group 1041. Type 1145 shown.

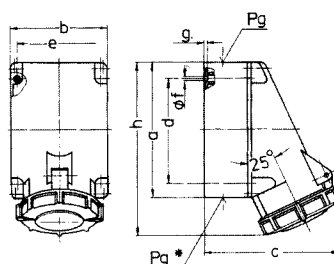


Drawings	Amp.	16			32			
		Poles			Poles			
1 MB 219	Dim. in mm	a	95	95	95	120	120	120
		b	102	102	102	112	112	112
		c	115	124	129	143	143	150
		d	64,2	64,2	64,2	90,2	90,2	90,2
		e	77,5	77,5	77,5	79	79	79
		f	88	88	88	98,5	98,5	98,5
		g	5,5	5,5	5,5	5,5	5,5	5,5
		h	128	128	132	160	160	160
		Pg	16	16	16	21	21	21
		Pg*		for Pg 16 (blind) to be cut out		for Pg 21 (blind) to be cut out		
Cond. cross section (mm²) min.-max.		1,5	1,5	1,5	2,5	2,5	2,5	
Max. cable diam. (mm)		13	15,5	15,5	20,5	20,5	20,5	

**Receptacle**, with 4 external fixing holes, with one cable entry at top and one blind cable entry (can be cut out) at bottom

▲ IP 67

Product group 1049. Type 1195 shown.

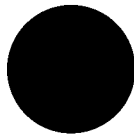
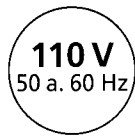
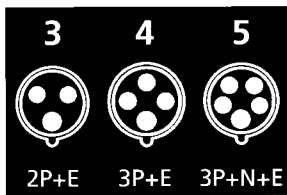


Drawing	Amp.	63			
		Poles			
1 MB 112	Dim. in mm	a	170	170	170
		b	118	118	118
		c	171	171	171
		d	134,5	134,5	134,5
		e	103	103	103
		f	6,1	6,1	6,1
		g	6	6	6
		h	216	216	216
		Pg	29	29	29
		Pg*		for 2x Pg 29 (blind) to be cut out	
Cond. cross section (mm²) min.-max.		6	6	6	
Max. cable diam. (mm)		27	27	27	

**Receptacle Soft-Contact**, internal fixing, 1 cable entry at top and two blind cable entries (can be cut out) at bottom, bottom part of enclosure can be turned 180°, with 6 blind holes for mounting special terminals if required (page 36)

▲ IP 67

Product group 1049. Type 136 shown.



Amps

Poles

3 pole 4 pole 5 pole  
4h 4h 4h

3 pole 4 pole 5 pole  
6h 9h 9h

3 pole 4 pole 5 pole  
9h 6h 6h

3 pole 4 pole 5 pole  
7h 7h 7h

3 pole 4 pole 5 pole  
10h 10h 10h

3 pole 4 pole 5 pole  
2h 2h 2h

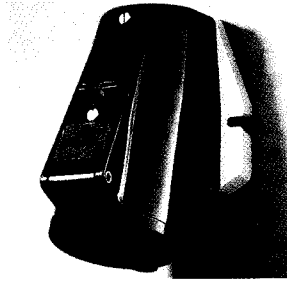
Part Numbers

Std. Pack.

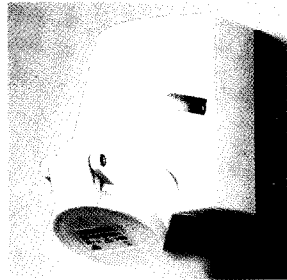
Weight

Qty. g/each

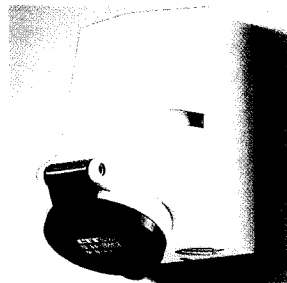
2



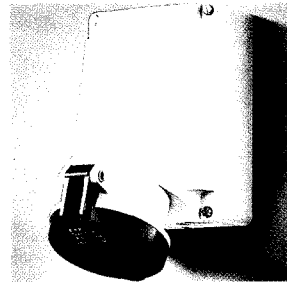
16	3	1177	1178					10	180
16	4		1267	1268	1269			10	220
16	5			1				10	230
32	3	1368	1369	1370				10	290
32	4		1372	1373	1374			10	310
32	5			2				10	335



16	3	100	101	102		2169	2241	10	180
16	4	103	104	105	106	107	108	10	240
16	5	109	110	111	2000	2188	2199	10	273

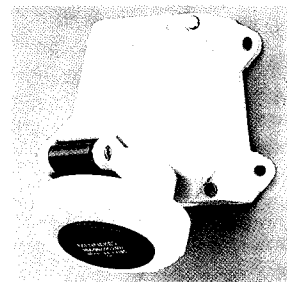


16	4	3030	3034	1418	3032	3035	3028	10	303
16	5	3041	3045	1419	3043	3046	3039	10	333
32	3	1420	1421	1422		3139	3134	10	355
32	4	1423	1424	1425	1426	1427	1428	10	370
32	5	1555	1556	1557	3152	3154	3149	10	424

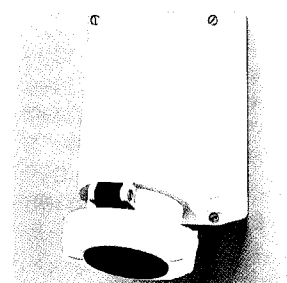


63	3	1136	1137	1138				5	825
63	4	1139	1140	1141	1142			5	880
63	5	1143	1144	1145				5	925

Products with pilot contacts: order number + index P, e. g. 1145 P.  
For detailed information see page 33 and 20/21.



16	3	1193	1192	1211				10	240
16	4	1194	1195	1196	1197	1212	1213	10	270
16	5	1198	1199	1200				10	315
32	3	1201	1202	1203				10	380
32	4	1204	1205	1206	1207	1214	1215	10	390
32	5	1208	1209	1210				10	450



63	3	127	128	129				5	865
63	4	130	131	132	133			5	920
63	5	134	135	136				5	970

Products with pilot contacts: order number + index P, e. g. 136 P.  
For detailed information see page 33 and 20/21.