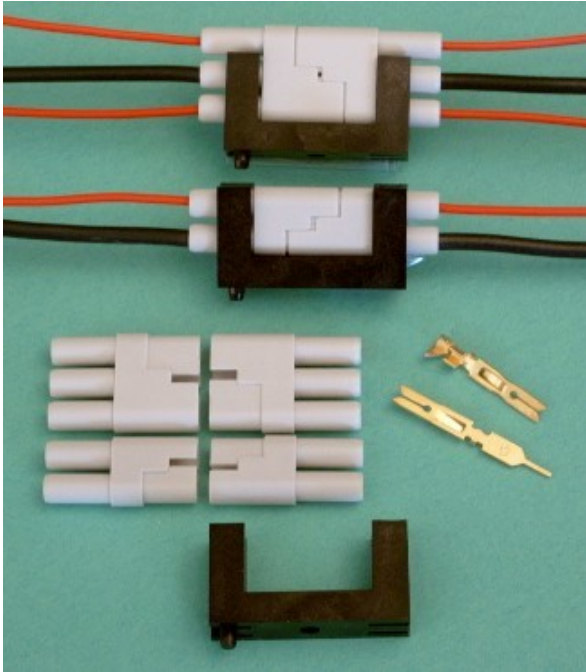


520 Series Panel Connector



Part Numbers

520-210-002	2 circuit housing
520-210-003	3 circuit housing
520-220-001	Retention clip

Contact code (order separately):

516-290-500	Wire hole
516-290-542	Wire wrap (0.61x1.27x14.4mm)
516-290-520	PCB tail
516-290-590	Loose crimp contacts
516-290-591	Crimp contacts on reel (1,800)

Prices on request for:

10.	Housings supplied with contacts assembled
11.	Housings with cable tails crimped & assembled

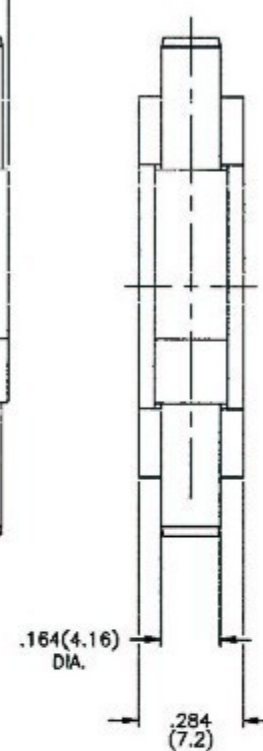
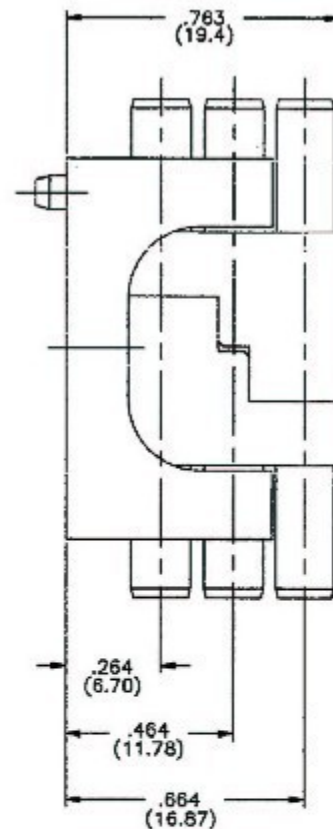
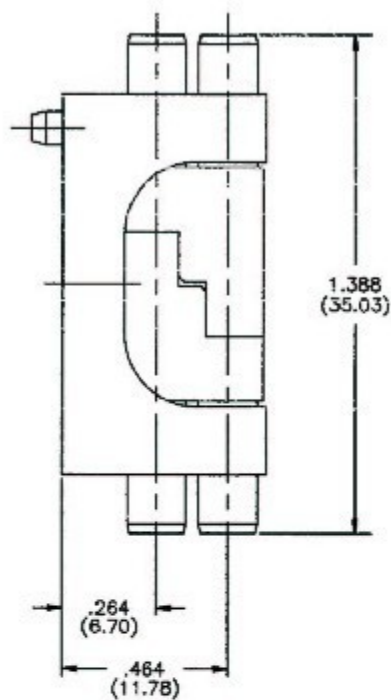
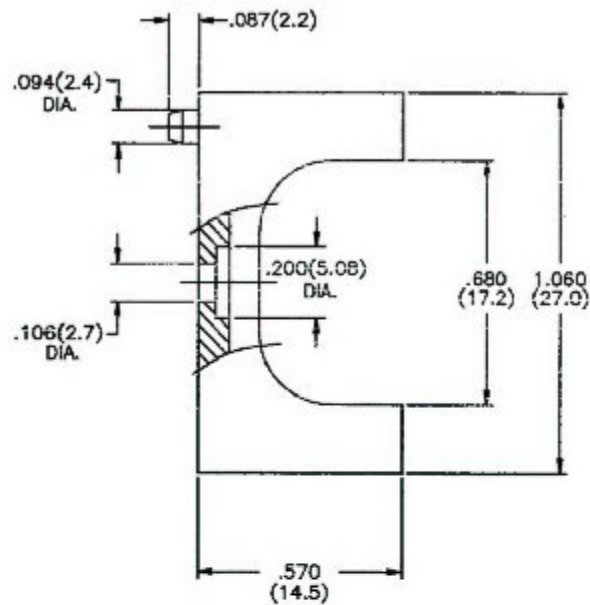
FEATURES

- Utilises EDAC gold-plated, hermaphroditic, contacts producing ultra-reliable connection with four gas-tight mating surfaces: A top quality, yet highly cost-effective, interconnect product.
- Board mount or in-line contact tail options.
- Identical insulator for plug and receptacle enabling one part number to be ordered/stocked
- 2 or 3 way options.
- Clip available to neatly secure mated connector to panel when used in-line.

SPECIFICATIONS

- **Materials:**
 - Housing and locking clip – Glass-filled thermoplastic
 - Contacts – Phosphor bronze alloy, all-over gold plate to 10µ"
- **Electrical**
 - Contact rating – 8.5 amperes
 - Contact resistance – 6 milliohms max.
 - Insulation resistance – 5,000 megohms min.
 - Voltage proof – 2,500 volts R.M.S. sea level






MATERIALS:

HOUSING AND LOCKING CLIP: THERMOPLASTIC GLASS FILLED
 CONTACTS: PHOSPHOR BRONZE ALLOY CA-510

ELECTRICAL SPECIFICATIONS

CONTACT RATING: 8.5 AMPERES
 CONTACT RESISTANCE: 6 MILLIOHMS MAX.
 INSULATION RESISTANCE: 5000 MEGOHMS MIN.
 VOLTAGE PROOF: 2500 VOLTS R.M.S SEA LEVEL

520 SERIES CABLE CONNECTOR		ACAD REFERENCE NO. 520SER	
		DRAWN: F.BRIONES	DATE: FEB.21/00
 EDAC INC TORONTO, ONTARIO CANADA YOUR CONNECTION TO QUALITY & SERVICE		CHECKED:	
		DATE:	
THESE DRAWINGS AND SPECIFICATIONS ARE THE PROPERTY OF EDAC INC. AND SHALL NOT BE REPRODUCED OR COPIED OR USED AS THE BASIS FOR THE MANUFACTURE OR SALE OF APPARATUS WITHOUT WRITTEN PERMISSION.		SCALE: (IN C.A.D. 1:1) SHEET 1 OF 1	
		DRAWING NUMBER 520-002-000-00	