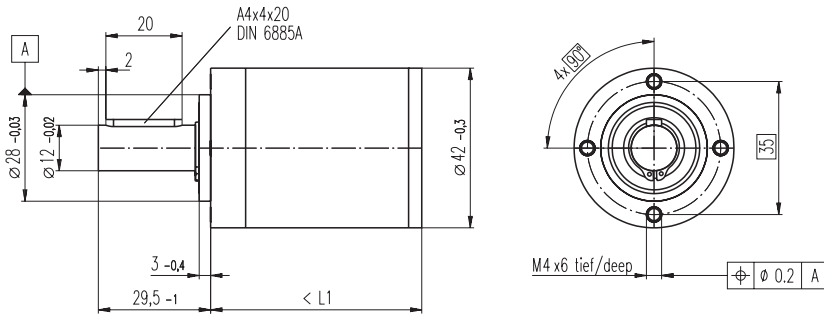


Planetary Gearhead GP 42 C $\varnothing 42$ mm, 3-15 Nm

Ceramicversion

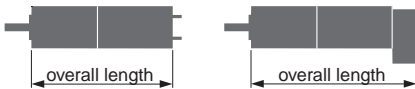


Technical Data

| | |
|---------------------------------------|-------------------------------|
| Planetary Gearhead | straight teeth |
| Output shaft | stainless steel |
| Bearing at output | ball bearings |
| Radial play, 12 mm from flange | preloaded |
| Axial play | preloaded |
| Max. permissible axial load | 150 N |
| Max. permissible force for press fits | 300 N |
| Recommended input speed | < 8000 rpm |
| Recommended temperature range | -20/+100°C |
| Number of stages | 1 2 3 4 5 |
| Max. perm. radial load | |
| 12 mm from flange | 120 N 150 N 150 N 150 N 150 N |

- Stock program
- Standard program
- Special program (on request!)

| Gearhead Data | Order Number | | | | | | |
|---|-----------------|------------------|--------------------|------------------|---------------------|---------------------|---------------|
| | 203113 | 203115 | 203120 | 203125 | 203128 | 203134 | 203139 |
| 1 Reduction | 3.5 : 1 | 12 : 1 | 43 : 1 | 91 : 1 | 150 : 1 | 319 : 1 | 546 : 1 |
| 2 Reduction absolute | $7\frac{1}{2}$ | $49\frac{1}{4}$ | $343\frac{1}{8}$ | 91 | $2401\frac{1}{16}$ | $637\frac{1}{2}$ | 546 |
| 3 Mass inertia gcm ² | 14 | 15 | 15 | 15 | 15 | 15 | 14 |
| Order Number | 203114 | 203116 | 203121 | 203126 | 203130 | 203135 | 203140 |
| 1 Reduction | 4.3 : 1 | 15 : 1 | 53 : 1 | 113 : 1 | 186 : 1 | 353 : 1 | 676 : 1 |
| 2 Reduction absolute | $13\frac{1}{3}$ | $91\frac{1}{6}$ | $637\frac{1}{12}$ | $338\frac{1}{3}$ | $4459\frac{1}{24}$ | $28561\frac{1}{81}$ | 676 |
| 3 Mass inertia gcm ² | 9.1 | 15 | 15 | 9.4 | 15 | 9.4 | 9.1 |
| Order Number | | 203117 | 203122 | 203127 | 203131 | 203136 | 203141 |
| 1 Reduction | | 19 : 1 | 66 : 1 | 126 : 1 | 230 : 1 | 394 : 1 | 756 : 1 |
| 2 Reduction absolute | | $169\frac{1}{9}$ | $1183\frac{1}{18}$ | 126 | $8281\frac{1}{36}$ | $1183\frac{1}{9}$ | 756 |
| 3 Mass inertia gcm ² | | 9.4 | 15 | 14 | 15 | 15 | 14 |
| Order Number | | 203118 | 203123 | 203129 | 203132 | 203137 | 203142 |
| 1 Reduction | | 21 : 1 | 74 : 1 | 156 : 1 | 257 : 1 | 441 : 1 | 936 : 1 |
| 2 Reduction absolute | | 21 | $147\frac{1}{2}$ | 156 | $1029\frac{1}{4}$ | 441 | 936 |
| 3 Mass inertia gcm ² | | 14 | 15 | 9.1 | 15 | 14 | 9.1 |
| Order Number | | 203119 | 203124 | | 203133 | 203138 | |
| 1 Reduction | | 26 : 1 | 81 : 1 | | 285 : 1 | 488 : 1 | |
| 2 Reduction absolute | | 26 | $2197\frac{1}{27}$ | | $15379\frac{1}{54}$ | $4394\frac{1}{9}$ | |
| 3 Mass inertia gcm ² | | 9.1 | 9.4 | | 15 | 9.4 | |
| 4 Number of stages | | 1 | 2 | 3 | 3 | 4 | 4 |
| 5 Max. continuous torque at gear output Nm | | 3.0 | 7.5 | 15 | 15 | 15 | 15 |
| 6 Intermittently permissible torque at gear output Nm | | 4.5 | 11.3 | 22.5 | 22.5 | 22.5 | 22.5 |
| 7 Max. efficiency % | | 90 | 81 | 72 | 72 | 64 | 64 |
| 8 Weight g | | 260 | 360 | 460 | 460 | 560 | 560 |
| 9 Average backlash no load ° | | 0.3 | 0.4 | 0.5 | 0.5 | 0.5 | 0.5 |
| 10 Gearhead length L1 mm | | 41.0 | 55.5 | 70.0 | 70.0 | 84.5 | 84.5 |



| Combination: | | | | | | | | | | |
|--------------|------|---------------------------|---------|----------|------|---------------------|-------|-------|-------|-------|
| + Motor | Page | + Tacho | Page | + Brake | Page | Overall length [mm] | | | | |
| RE 35, 90 W | 76 | | | | | 112.0 | 126.5 | 141.0 | 141.0 | 155.5 |
| RE 35, 90 W | 76 | DC-Tacho 22 | 200 | | | 130.1 | 144.6 | 159.1 | 159.1 | 173.6 |
| RE 35, 90 W | 76 | Digital Encoder HED_ 55_ | 204/206 | | | 133.0 | 147.5 | 162.0 | 162.0 | 176.5 |
| RE 35, 90 W | 76 | | | Brake 40 | 232 | 148.0 | 162.5 | 177.0 | 177.0 | 191.5 |
| RE 36, 70 W | 77 | | | | | 112.3 | 126.8 | 141.3 | 141.3 | 155.8 |
| RE 36, 70 W | 77 | DC-Tacho 22 | 200 | | | 130.4 | 144.9 | 159.4 | 159.4 | 173.9 |
| RE 36, 70 W | 77 | Digital Encoder HED_ 55_ | 204/206 | | | 132.3 | 146.8 | 161.3 | 161.3 | 175.8 |
| RE 40, 150 W | 78 | | | | | 112.1 | 126.6 | 141.1 | 141.1 | 155.6 |
| RE 40, 150 W | 78 | Digital Encoder HED_ 55_ | 204/206 | | | 132.8 | 147.3 | 161.8 | 161.8 | 176.3 |
| RE 40, 150 W | 78 | | | Brake 40 | 232 | 148.1 | 162.6 | 177.1 | 177.1 | 191.6 |
| RE 40, 150 W | 78 | Digital Encoder HEDL 9140 | 208 | | | 158.9 | 173.4 | 187.9 | 187.9 | 202.4 |
| RE 40, 150 W | 78 | | | Brake 28 | 233 | 158.9 | 173.4 | 187.9 | 187.9 | 202.4 |
| RE 40, 150 W | 78 | Digital Encoder HEDL 9140 | 208 | Brake 28 | 233 | 174.5 | 189.0 | 203.5 | 203.5 | 218.0 |
| EC 40, 120 W | 157 | | | | | 111.1 | 125.6 | 140.1 | 140.1 | 154.6 |
| EC 40, 120 W | 157 | Digital Encoder HED_ 55_ | 205/207 | | | 129.5 | 144.0 | 158.5 | 158.5 | 173.0 |
| EC 40, 120 W | 157 | Resolver 26 | 213 | | | 137.7 | 152.2 | 166.7 | 166.7 | 181.2 |
| EC 40, 120 W | 157 | | | Brake 40 | 232 | 144.6 | 159.1 | 173.6 | 173.6 | 188.1 |
| EC 45, 150 W | 158 | | | | | 152.3 | 166.8 | 181.3 | 181.3 | 195.8 |
| EC 45, 150 W | 158 | Digital Encoder HEDL 9140 | 208 | | | 167.9 | 182.4 | 196.9 | 196.9 | 211.4 |
| EC 45, 150 W | 158 | Digital Encoder HEDL 9140 | 208 | Brake 28 | 233 | 167.9 | 182.4 | 196.9 | 196.9 | 211.4 |
| EC 45, 150 W | 158 | Resolver 26 | 213 | | | 152.3 | 166.8 | 181.3 | 181.3 | 195.8 |
| EC 45, 150 W | 158 | | | Brake 28 | 233 | 167.9 | 182.4 | 196.9 | 196.9 | 211.4 |
| EC 45, 250 W | 159 | | | | | 185.1 | 199.6 | 214.1 | 214.1 | 228.6 |
| EC 45, 250 W | 159 | Digital Encoder HEDL 9140 | 208 | | | 200.7 | 215.2 | 229.7 | 229.7 | 244.2 |
| EC 45, 250 W | 159 | Digital Encoder HEDL 9140 | 208 | Brake 28 | 233 | 200.7 | 215.2 | 229.7 | 229.7 | 244.2 |
| EC 45, 250 W | 159 | Resolver 26 | 213 | | | 185.1 | 199.6 | 214.1 | 214.1 | 228.6 |
| EC 45, 250 W | 159 | | | Brake 28 | 233 | 200.7 | 215.2 | 229.7 | 229.7 | 244.2 |