

Linear actuator

Matrix 3

Benefits

- Silent operation
- Full system with control unit, operating switch and accessories
- Synchronization possible
- Compact and aesthetic
- Back-up nut as standard

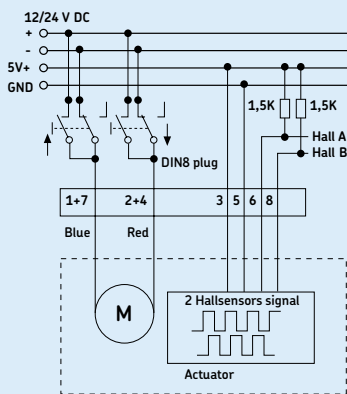


Suitable control units and accessories

Control units		SCU 1	SCU 5	SCU 9	VCU 5	VCU 8	VCU 9	BCU 5	BCU 8	MCU
MAX 3		●	●	●	●	●	●	●	●	●
	EHA1									●
	EHA3	●	●	●	●	●	●	●	●	●
	STJ	●	●	●	●	●	●	●	●	●
	STA									●
	STE	●	●	●	●	●	●	●	●	●

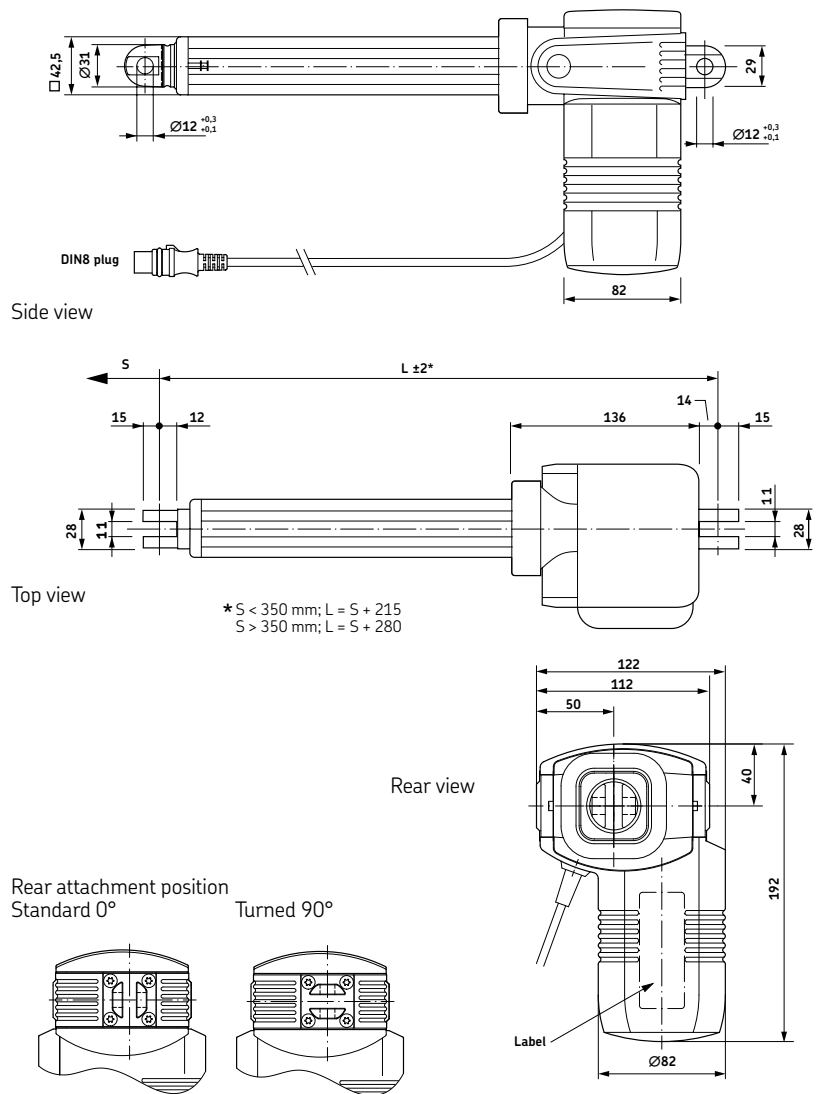
Hand switch
 Foot switch
 Desk switch

Connecting diagram*



* Only valid for MAX 31. MAX 30 must be operated by a BCU, MCU, SCU or VCU control unit.

Dimensional drawing



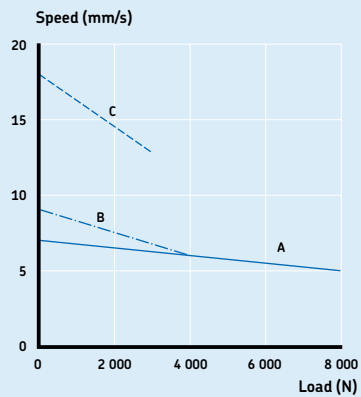
Technical data

	Unit	MAX 3..A..	MAX 3..B..	MAX 3..C..
Rated push load	N	8 000	4 000	3 000
Rated pull load	N	6 000 ¹⁾	4 000	3 000
Speed (full load to no load)	mm/s	5 to 7	6 to 9	12,7 to 18
Stroke	mm	50 to 700	50 to 700	50 to 700
Retracted length	mm	$S + 215/280^2)$	$S + 215/280^2)$	$S + 215/280^2)$
Voltage	V DC	12 or 24	12 or 24	12 or 24
Power consumption	W	120	120	120
Current consumption	A	5,0	5,0	5,0
Duty cycle	%	10 (1/9)	10 (1/9)	10 (1/9)
Ambient temperature	°C	0 to +40	0 to +40	0 to +40
Type of protection	IP	66S	66S	66S
Weight (at 200 mm stroke)	kg	4,5	4,2	4,0
Color	-	Grey	Grey	Grey

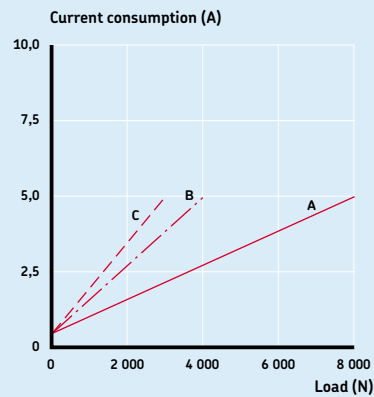
¹⁾ Max load for medical application is 5 000 N

²⁾ $S \leq 350$ mm; $L = S + 215$
 $S > 350$ mm; $L = S + 280$

Performance diagrams

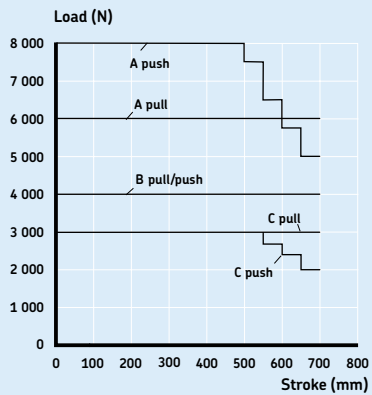


Speed-load diagram

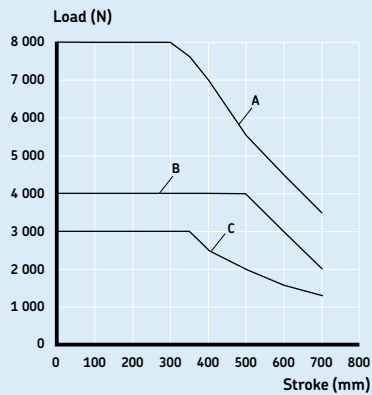


Current-load diagram

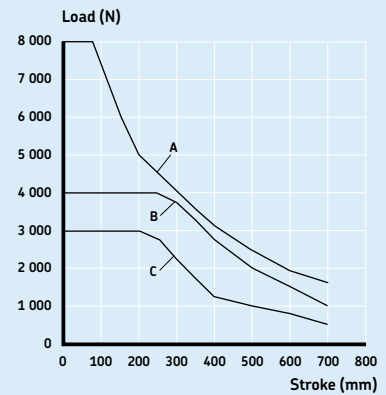
Safety factor load conditions



Push load reduction static
Safety factor S=1



Push load reduction static
Safety factor S=2



Push load reduction static
Safety factor S=4 (EN60601)

Ordering key

MAX3 - [] [] [] [] [] [] A [] [] [] [] [] 000

Type

Voltage:

24 V DC 0
 24 V DC with integrated current cut-off 1
 12 V DC 2

Load:

8 000 N A
 4 000 N B
 3 000 N C

Stroke (S):

50 mm 050 265
 100 mm 100 315
 150 mm 150 365
 200 mm 200 415
 250 mm 250 465
 300 mm 300 515
 350 mm 350 565
 400 mm 400 680
 450 mm 450 730
 500 mm 500 780
 550 mm 550 830
 600 mm 600 880
 650 mm 650 930
 700 mm 700 980

Other stroke lengths; 50<S<700 mm --- ---

Cable / Connecting plug:

Coiled, 0,75 m (not stretched) / DIN8 plug OB
 Straight, 2,5 m / DIN8 plug C5
Special cable length on request --

Orientation of rear attachment:

No fork head (customized option) 0
 Standard (as drawing) 1
 Turned 90° 2

Option 1:

No option, only valid for actuator "A" (push and pull) 0
 Quick-release +EKZm, push, fork head bore parallel to button (for actuator design "C" is L= +115 mm)* E
 Quick-release +EKZm, push, fork head bore 90° to button (for actuator design "C" is L= +115 mm)* F
 Electrical anti-pinching protection, motor direction pull K
 Electrical anti-pinching protection, motor direction push L
 Push load, for actuator version "B" and "C" M
 Pull load, for actuator version "B" and "C" N
 EKZm: mechanical anti-pinching *min. stroke 150 mm up to 300 mm

Option 2:

No option 0
 2-Hall encoder, DIN8 plug F
 Lifetime monitoring M
 Lifetime monitoring, 2-Hall encoder, DIN8 plug P

Option 3:

No option -
 Emergency lowering, fork head bore parallel to clamping lever (for actuator design "A", L+30 mm) V
 Emergency lowering, fork head bore 90° to clamping lever (for actuator design "A", L+30 mm) W

Options shown in italics are only available on demand. Contact SKF for more information on minimum quantities and additional costs.

© SKF is a registered trademark of the SKF Group

© SKF Group 2011

The contents of this publication are the copyright of the publisher and may not be reproduced (even extracts) unless prior written permission is granted. Every care has been taken to ensure the accuracy of the information contained in this publication but no liability can be accepted for any loss or damage whether direct, indirect or consequential arising out of the use of the information contained herein.

Printed in Sweden on environmentally friendly paper.

PUB L5321,2520 EN · February 2011

