



PLANETARY GEARHEAD

Metal Version

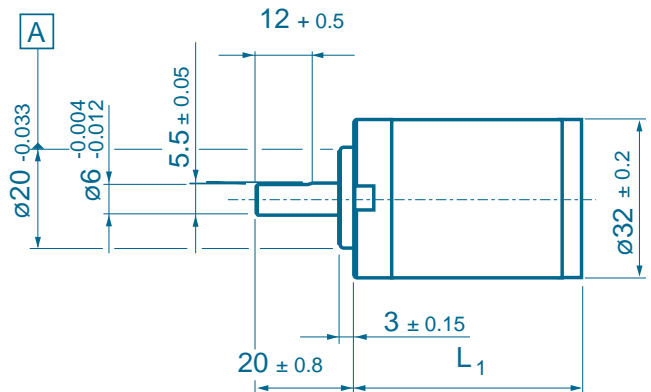
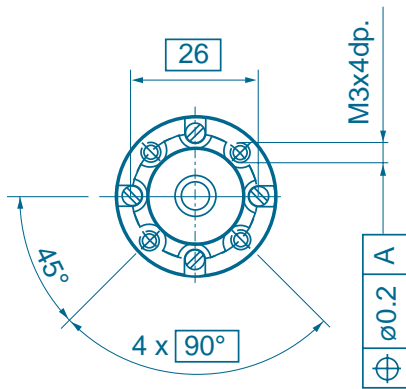
GP32._ _ _ _

TRIDENT ENGINEERING LIMITED
Trident House, King Street Lane,
Winnersh, Wokingham,
Berkshire, RG41 5AS

Telephone: 0118 978 6444
Fax: 0118 977 6345
Email: sales@tridenteng.co.uk
www.tridenteng.co.uk

General data				Product combinations			
Planetary gearhead			straight teeth	2-29/02			
Bearing at output			ball bearing	3-30/05			
Radial play, 5mm from flange			max. 0.08mm	3-38/14			
Axial play			max. 0.7mm				
Max. permissible axial load			120N				
Max. permissible force for press fits			120N				
Average backlash lo load per stage			<0.9°				
Recommended input speed			<4000rpm				
Recommended temperature range			-20/+80°C				
		1 stage	2 stages	3 stages			
Max radial load 12mm from flange		70N	140N	210N			
Efficiency		80%	75%	70%			
Gearhead Order No	Ratio reduction	Absolute	No of stages	Max Torque continuous [Nm]	Max Torque intermittent [Nm]	Weight [g]	L1 [mm]
GP32 0005	5.2:1	57/11	1	0.75	1.12	130	26.6
GP32 0019	19.2:1	3591/187	2	2.25	3.37	170	36.10
GP32 0027	27:1	3249/121	2	2.25	3.37	170	36.10
GP32 0035	35:1	1539/44	2	2.25	3.37	170	36.10
GP32 0071	71:1	226233/3179	3	4.50	6.75	215	45.60
GP32 0100	100:1	204687/2057	3	4.50	6.75	215	45.60
GP32 0139	139:1	185193/1331	3	4.50	6.75	215	45.60
GP32 0181	181:1	87723/484	3	4.50	6.75	215	45.60
GP32 0236	236:1	41553/176	3	4.50	6.75	215	45.60

The ratios shown are stock ratios, there are many more options available - please contact our technical department for more details.



Notes



DC MOTOR

14 watt

3-38/14 _ _

TRIDENT ENGINEERING LIMITED
 Trident House, King Street Lane,
 Winnersh, Wokingham,
 Berkshire, RG41 5AS

Telephone: 0118 978 6444

Fax: 0118 977 6345

Email: sales@tridenteng.co.uk

www.tridenteng.co.uk

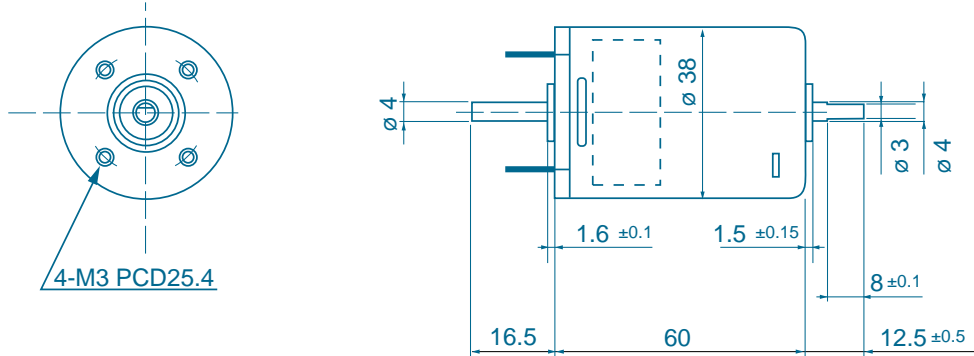
Stock Voltages		12	24
1. Voltage	V	12	24
2. Power Output	W	13.9	13.2
3. Rated Torque	mN-m	24.5	24.5
	g-cm	250	250
4. Rated Speed	r/min	5,400	5,150
5. Rated Current	mA	1,660	850
6. No load Speed	r/min	6,600	6,300
7. No. load Current	mA	205	110
8. Starting Torque	mN-m	137	134
	g-cm	1,400	1,370
9. Torque Constant	mN-m/A	16.9	33.1
	g-cm/A	172	338
10. Voltage Constant	V/1000r/min	1.8	3.5
11. Winding Resistance	Ω	1.7	5.9
12. Winding inductance	m H	0.9	3.7
13. Moment of Inertia	g-cm ²	39	39
14. Mechanical Constant	mS	23	21
15. Thermal Resistance	$^{\circ}\text{C/W}$	17	17

Product combinations

Gearheads GP32, GS40, GPP32, GS38

Encoders HEDS

Front Mounting Face



Notes

