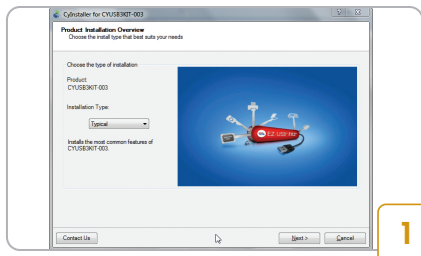
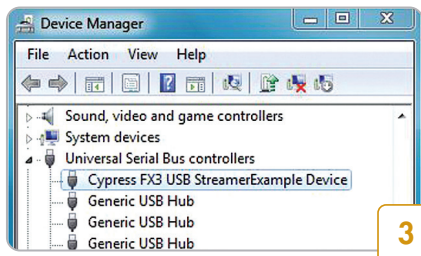


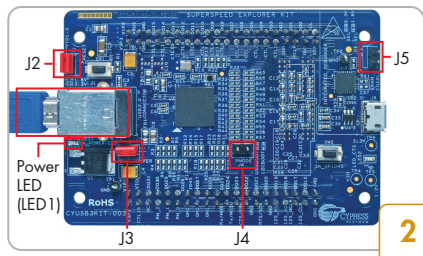
CYUSB3KIT-003

**Step 1: Software Installation**

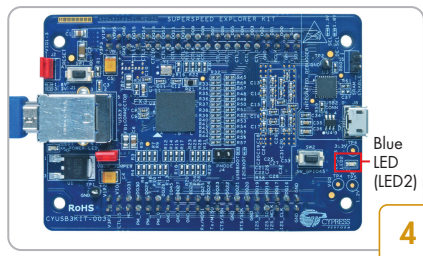
- Download and install the latest Kit Setup *SuperSpeedExplorerKitSetup.exe* from www.cypress.com/go/SuperSpeedExplorerKit

**Step 3: Driver Installation**

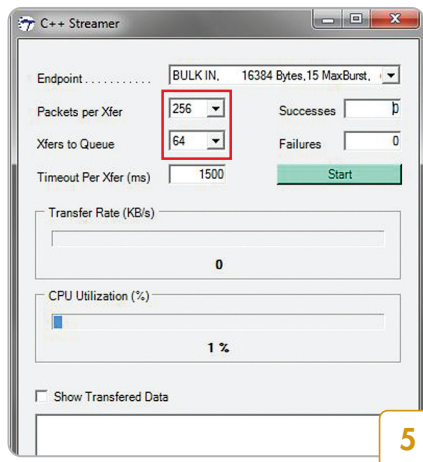
- Drivers are installed automatically. The board enumerates as **Cypress FX3 USB StreamerExample Device** under Universal Serial Bus Controllers in Windows Device Manager
- If automatic driver binding does not happen, follow the note given on the next page to manually bind the driver

**Step 2: Hardware Connection**

- Make sure that jumpers **J2** and **J3** are closed, **J4** and **J5** are open
- Connect the board to the computer using the USB 3.0 cable provided
- Power LED glows green when the board is powered

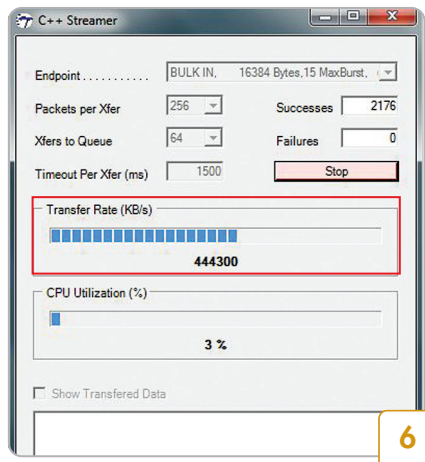
**Step 4: Observe the Blue LED (LED2)**

- Blue LED blinks if the board is connected to a USB 3.0 host port
- Blue LED stays ON if the board is connected to a USB 2.0 host port



Step 5: Configure the Streamer Application

- To measure the USB data transfer rate, run **Streamer.exe** from **C:\Program Files (x86)\Cypress\EZ-USB FX3 SDK\1.3\application\cpp\streamer\x86\Release**
- In the Streamer application, select the following parameters
 - **Endpoint...** BULK IN
 - **Packets per Xfer** - 256
 - **Xfers to Queue** - 64
- Click **Start**



Step 6: Demonstrating the USB Transfer Rate

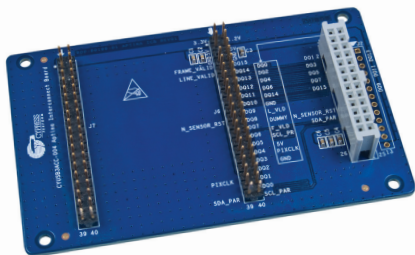
- The Streamer application displays the USB transfer rate in KB/s as shown above
- The transfer rate shown in the above picture is when the board is connected to a USB 3.0-enabled computer. The transfer rate may vary depending on USB 3.0 host controller's capability. If a USB 2.0 enable computer is used, data throughput will be limited to USB 2.0 speeds

Note:

- To manually bind the driver, in Windows Device Manager, locate the **FX3** device under **Other devices**. Right-click the device and select **Update Driver Software**. Choose **Browse my computer for driver software**.
- Browse to the location **<Install Directory>\Cypress\SuperSpeed Explorer Kit\1.0\Driver\bin**. The default **Install Directory** is **C:\Program Files** for 32-bit operating system (OS) and **C:\Program Files (x86)** for 64-bit OS
- Select a driver based on OS and click on **Next**. For e.g. the driver for Win7 64-bit OS is located at **C:\Program Files (x86)\Cypress\SuperSpeed Explorer Kit\1.0\Driver\bin\Win7\x64**

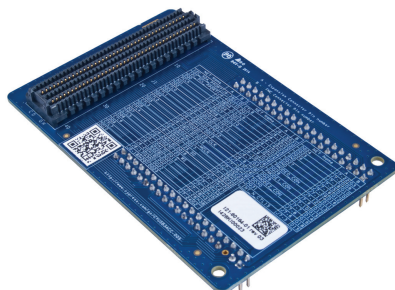
INTERCONNECT BOARDS

- Interface the Kit with Xilinx® FPGA, Altera® FPGA, and Aptina™ image sensor using the interconnect boards available at www.cypress.com/go/SuperSpeedExplorerKitInterconnect



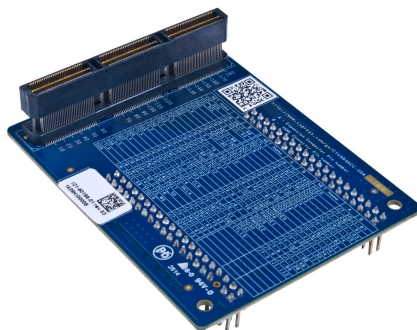
CYUSB3ACC-004

Interconnect board for Aptina image sensor board



CYUSB3ACC-005

Interconnect board for Xilinx FPGA board

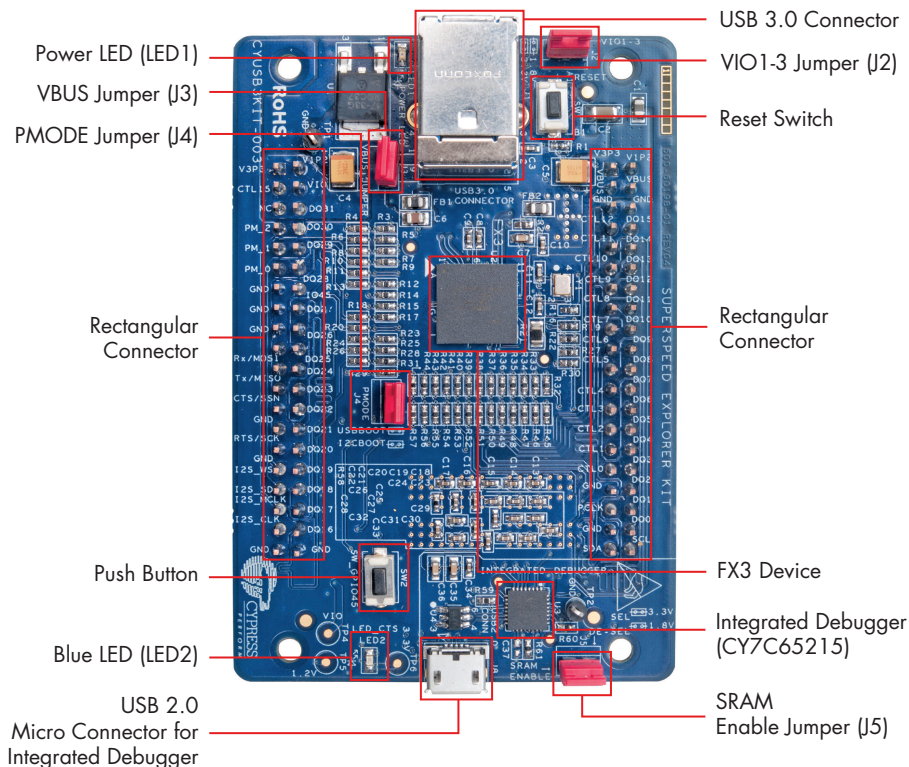


CYUSB3ACC-006

Interconnect board for Altera FPGA board

Learn to use FX3 in your design with the projects in the Kit Guide available at www.cypress.com/go/SuperSpeedExplorerKit

CYUSB3KIT-003



For the latest information about this Kit and to download Kit Software and Hardware files, visit <http://www.cypress.com/go/SuperSpeedExplorerKit>