

The efficiency you deserve

> Acti 9

The complete high-performance
modular system for final distribution

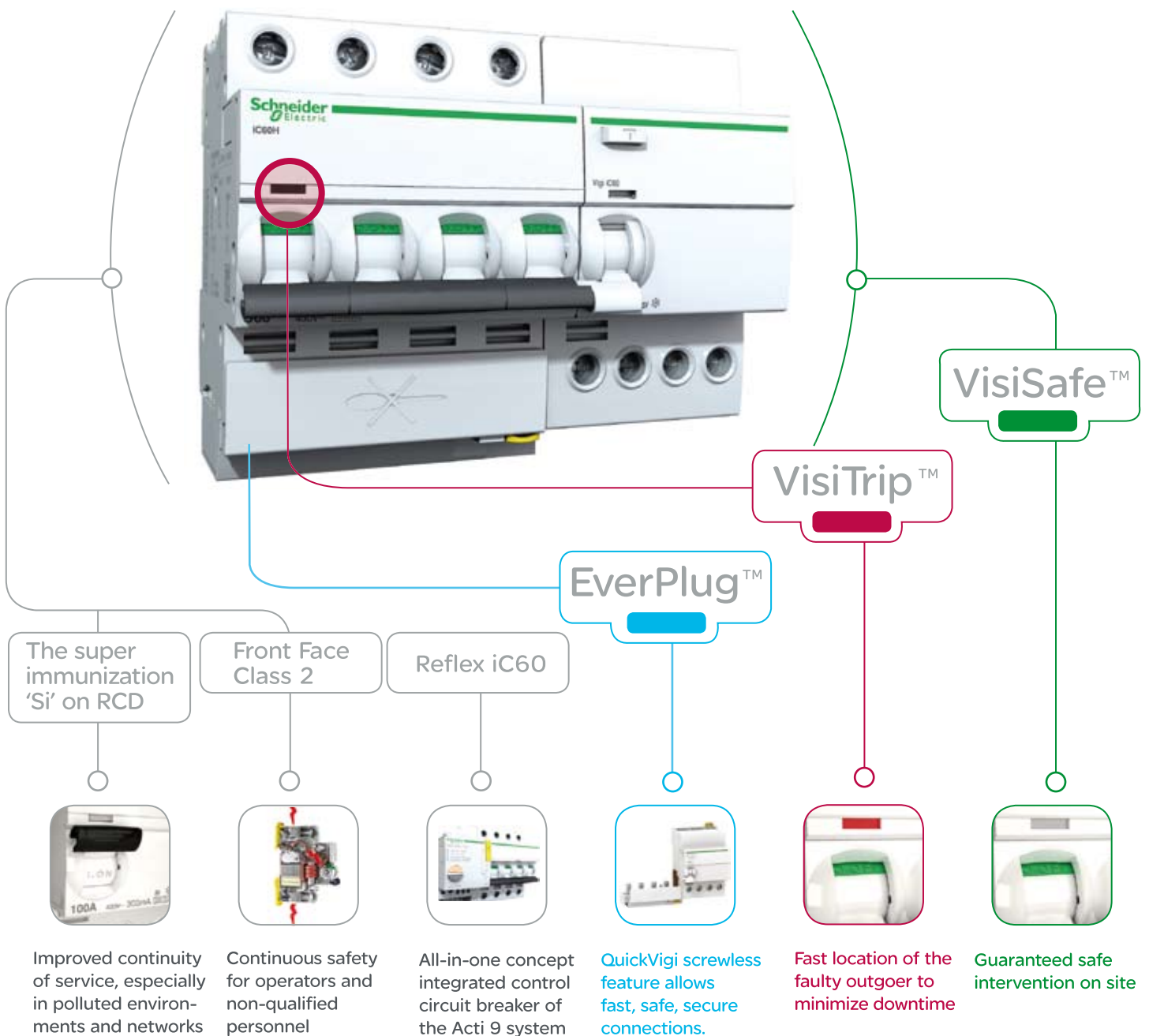
Schneider
Electric

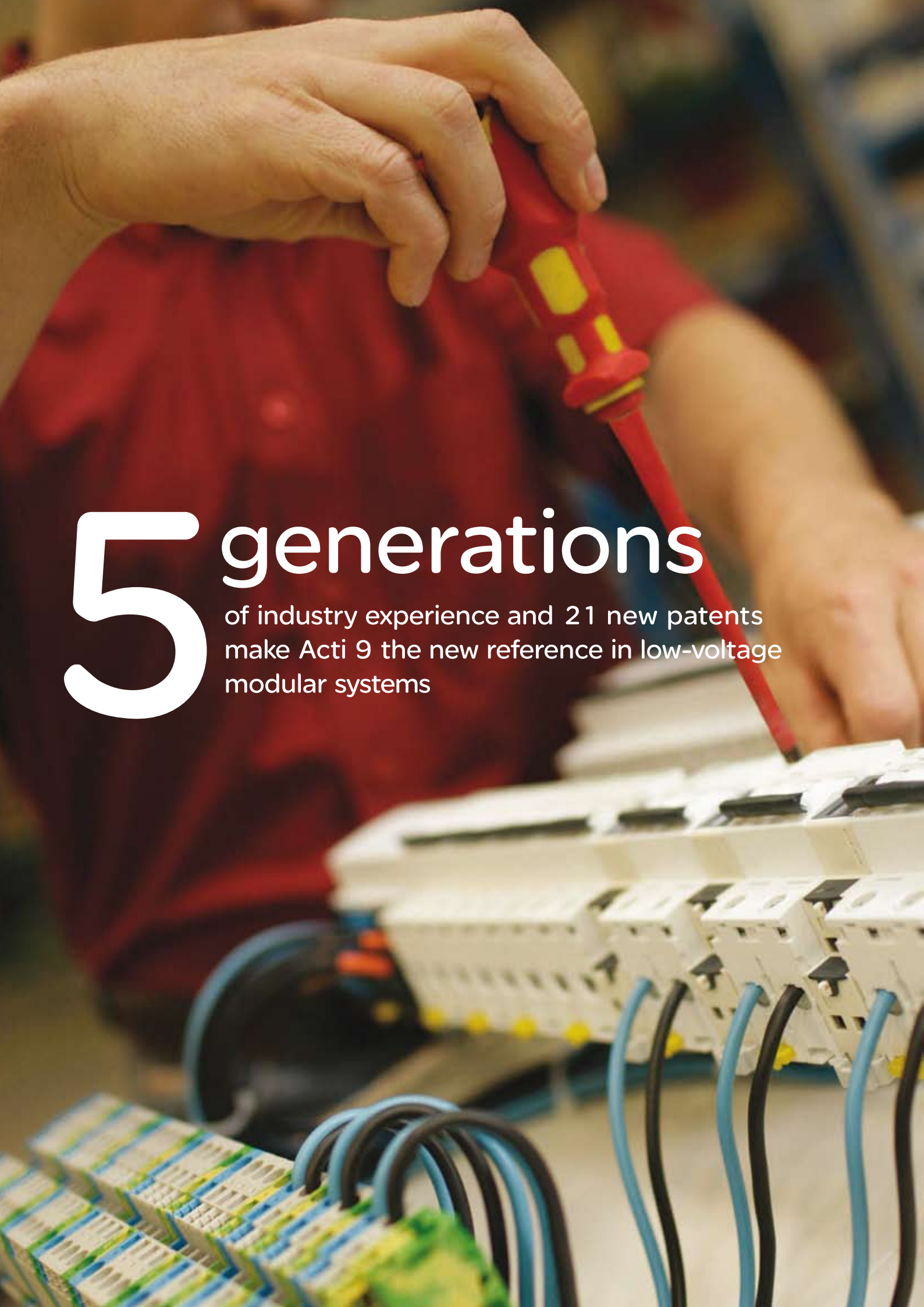
> Acti 9

Exclusive new features give you the safest, simplest, and most efficient installations

The most flexible and innovative low-voltage modular system

Patented features offer industry-unique benefits like unprecedented safety, even in the most demanding environments. Acti 9™ gives you unmatched efficiency, reduces design and installation time, eliminates downtime, and makes your business even more competitive. Your final distribution operations are simplified, giving you the right solution for every application. It even adds control capabilities and adapts easily to the dynamic requirements of tertiary and industrial lighting applications.





5 generations

of industry experience and 21 new patents
make Acti 9 the new reference in low-voltage
modular systems

> Acti 9

The safest, simplest, and most efficient system for power distribution solutions

'When I install the Acti 9 I know I don't have to come back to the job'.

Circuit breakers

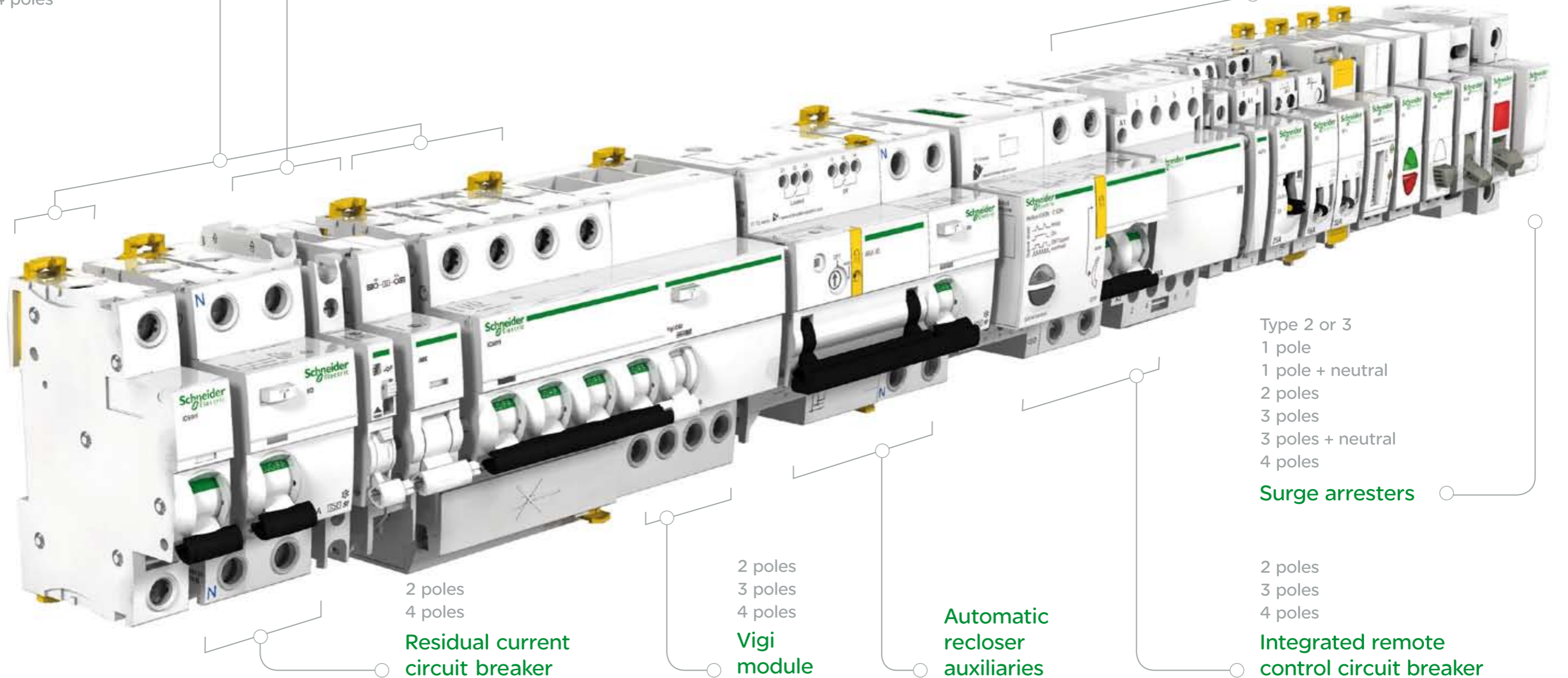
- 1 pole
- 2 poles
- 3 poles
- 4 poles

Electrical auxiliaries

Tripping, notification, indication, and remote status indication

Control

Contactors, impulse relays, indicator lights, push-buttons, kilowatt hour meters, and selector switches, etc.



- 2 poles
- 3 poles
- 4 poles

Residual current circuit breaker

- 2 poles
- 3 poles
- 4 poles

Vigi module

Automatic recloser auxiliaries

- Type 2 or 3
- 1 pole
- 1 pole + neutral
- 2 poles
- 3 poles
- 3 poles + neutral
- 4 poles

Surge arresters

- 2 poles
- 3 poles
- 4 poles

Integrated remote control circuit breaker

100%

safe for installers and users in the most severe environments

100%

coordination between MCB and actuator

100%

preventative maintenance

15%

time saved on design and installation

0%

downtime



best choice for industrial and tertiary buildings

Integrated remote control MCBs

Reflex iC60N, iC60H

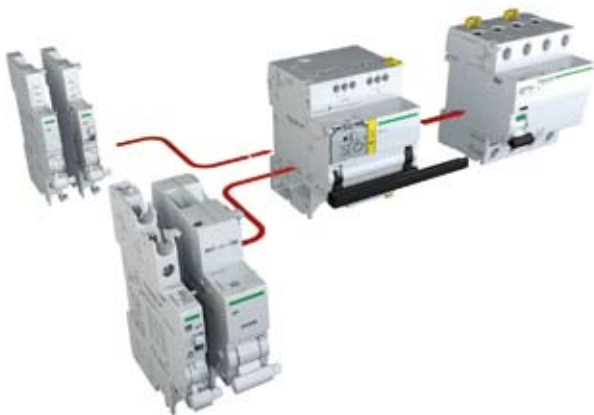
Curves	B, C, D
Type	2P, 3P, 4P
Rating (A)	10, 16, 25, 40
Standards	IEC 60947-2
Electrical endurance	30 000 cycles (AC1) 6 000 cycles (AC5 a/b) 50 000 cycles (AC21)
Degree of protection	IP20/IP40



Control	iCT	iTL	iPB	iSSW	iIL	iEN, iME
Function	Contactors	Impulse relays	Push-buttons	Switches	Indicator lights	Kilowatt hour meters
Type	1P, 2P 3P, 4P	1P, 2P 3P, 4P	single double single + indicator light	1P, 2P, 3P, 4P	single double flashing light voltage presence	single phase three phases three phases neutral
Rating (A)	16, 25, 40 ,63,100	16 & 32	20	20 to 125		40 to 6,000
Standards	IEC 61095	IEC 60669-1 IEC 60669-2-2	IEC 60669-1 IEC 60947-5-1	IEC 60669-1 IEC 60669-2-4 IEC 60947-3 IEC 60947-5-1	IEC 60947-5-1	IEC 62053-21 IEC 61557-12
Electrical endurance (O-C operations)	100 per day	100 000 AC22 (16A) 200 000 AC21 (16A) 20 000 AC22 (32A) 50 000 AC21 (32A)	30 000 AC22	30 000 AC22		



Electrical auxiliaries and mounting accessories



Combined iOF, iSD, iMN, iMX, iMSU electrical auxiliaries between iC60 circuit breakers and iLD residual current circuit breakers, automatic recloser, and remote control auxiliaries

Terminal shields, Interpole barrier, screw shields, plug-in base, padlocking device, clip-on terminal markers, and rotary handle

Circuit breakers

iC60 N, H, L, LMA

iK60 N

ICU (A) at 400V - IEC/EN 60898-1	6 000, 10 000, 15 000	6 000
ICU (kA) at 415V - IEC/EN 60947-2	10, 15, 20, 25, 50, 70, 100	
Type	1P, 2P, 3P, 4P	1P, 2P, 3P, 4P
Rating (A)	0,5 to 63	6 to 40
Curves	B, C, D	B, C
Standards	IEC/EN 60947-2, 60898-1	IEC/EN 60898-1
Degree of protection	IP20/IP40	IP40



Add-on residual current devices

Vigi iC60

RCD Type	Asi, A, AC
Type	2P, 3P, 4P
Rating (A)	25, 40, 63
Standards	IEC/EN 61009-1
Sensitivity (mA)	10, 30, 100, 300, 300 [S], 500, 500 [S], 1000 [S]
Degree of protection	IP20/IP40

EverPlug connection up to 40A



Residual current circuit breakers

iID

iIDK

RCD type	Asi, A, AC, B	AC
Type	2P, 4P	2P, 4P
Rating (A)	16 to 125	25, 40
Standards	IEC/EN 61008-1	IEC/EN 61008-1
Sensitivity (mA)	10, 30, 100, 300, 300 [S], 500, 500 [S]	30, 300
Degree of protection	IP20/IP40	IP40



Installation and wiring

Multiclip splitter block

Distribloc splitter block

Rating (A)	80	63
Degree of protection	IP20	IP20



Surge arresters type 2 or 3

iPF, iPRD

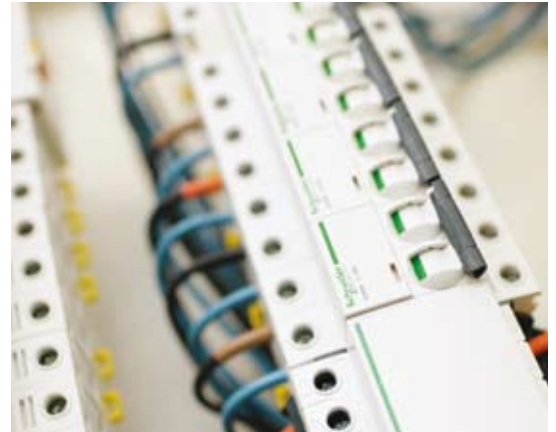
Type	1P, 1P+N, 2P, 3P, 3P+N, 4P
I max (kA)	8, 20, 40, 65
Standards	IEC 61643-1, IEC 61643-11
Degree of protection	IP20/IP40



> Acti 9

Unmatched, aesthetically attractive design
Unparalleled high-quality fit and finish

'You can tell it's a high-quality product when you hold it'.



Take your next step with these **FREE** materials from Schneider Electric

Visit www.SEreply.com and enter Key Code



Read how energy and environmental responsibility lie at the core of the Schneider Electric™ strategy.

Enter Key Code
87785T



Sign up for our **FREE**, flexible training so you can develop new, more efficient solutions.

Enter Key Code
87559T

Schneider Electric East Mediterranean s.a.l.

Tabaris, Charles Malek Avenue, Tabaris Centre 1063, 10th Floor
P.O. Box : 166223 - Beirut, Lebanon
Tel. +961 1 204 502
Fax +961 1 204 458
www.eastmed.schneider-electric.com

100%

recyclable and recoverable materials, RoHS compliant, and REACH



Lebanon +9611321645 • customercare.lb@schneider-electric.com
Syria +963116124799 • customercare.sy@schneider-electric.com