

Hour meters

Features

- Flush, surface or DIN-rail mounting
- Durable, maintenance-free technology
- Robust and reliable
- Various dimensions, round and square
- Latching screws or low profile plugs

Applications

- Machinery working time control
- Pumps working time control

Voltage

EAN-Code 4010940

Ord.-No.

**taxxo 403 (UWZ 35 V)**

| | | |
|-------------------|----------|----------------|
| 220-240 V / 50 Hz | 001773 | 05.21.0001.1 |
| 110-120 V / 50 Hz | 001780 | 05.21.0002.1 |
| 36-48 V / 50 Hz | 001797 * | 05.21.0003.1 * |
| 18-26 V / 50 Hz | 001803 * | 05.21.0004.1 * |
| 110-127 V / 60 Hz | 001810 * | 05.21.0009.1 * |

- DIN-rail mounting

**taxxo 100 (UWZ 48 A)**

| | | |
|-------------------|----------|----------------|
| 220-240 V / 50 Hz | 001339 | 05.15.1001.1 |
| 330-380 V / 50 Hz | 001506 | 05.15.1089.1 |
| 110-120 V / 50 Hz | 001407 | 05.15.1019.1 |
| 36-48 V / 50 Hz | 001452 | 05.15.1049.1 |
| 18-26 V / 50 Hz | 001377 | 05.15.1010.1 |
| 110-127 V / 60 Hz | 001438 * | 05.15.1026.1 * |

- Surface-mounting

**taxxo 112 (UWZ 48 KED)**

| | | |
|-------------------|----------|----------------|
| 220-240 V / 50 Hz | 002268 | 05.15.1038.1 |
| 110-120 V / 50 Hz | 002282 | 05.15.1118.1 |
| 18-26 V / 50 Hz | 002275 | 05.15.1016.1 |
| 110-127 V / 60 Hz | 002299 * | 05.15.1031.1 * |

- Screw terminals / Flush-mounting

**taxxo 612 (FWZ 36 K)**

| | | |
|-------------------|--------|--------------|
| 220-240 V / 50 Hz | 001599 | 05.20.0006.1 |
| 330-380 V / 50 Hz | 001742 | 05.20.0033.1 |
| 18-26 V / 50 Hz | 001667 | 05.20.0016.1 |

- Screw terminals (VBG4) / Flush-mounting

**taxxo 712 (FWZ 55 K)**

| | | |
|-------------------|----------|----------------|
| 220-240 V / 50 Hz | 001582 | 05.20.0004.1 |
| 110-120 V / 50 Hz | 001728 | 05.20.0029.1 |
| 36-48 V / 50 Hz | 001711 | 05.20.0028.1 |
| 18-26 V / 50 Hz | 001681 | 05.20.0018.1 |
| 110-127 V / 60 Hz | 001629 * | 05.20.0008.1 * |

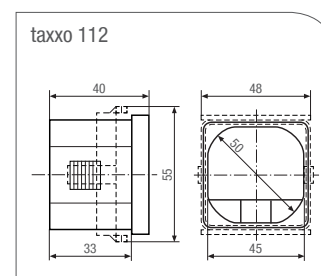
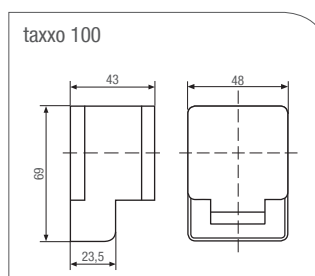
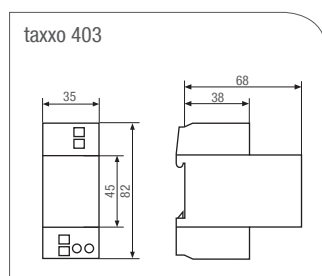
- Screw terminals (VBG4) / Flush-mounting

* These variants are being produced only upon receipt of special orders.

Technical data

| | taxxo 403 | taxxo 100 | taxxo 112 |
|---------------------------|--|---------------------------------|-----------------------|
| Dimensions H x W x D (mm) | 82 x 35 x 68 | 69 x 48 x 43 | 55 x 48 x 40 |
| Switchboard panel (mm) | – | – | 45 x 45 |
| Distributor cut-out (mm) | 46 x 36 | – | – |
| Mounting depth (mm) | 68 | 43 | 33 |
| Weight (g) approx. | 90 | 70 | 60 |
| Connection | see ordering data | see ordering data | see ordering data |
| Power consumption | approx. 1 VA | approx. 1 VA | approx. 1 VA |
| Ambient temperature | -20°C ... +55°C | -20°C ... +55°C | -20°C ... +55°C |
| Protection class | II | II | II |
| Protection type front | IP 20 | IP 20 | IP 20 |
| Accuracy | synchronic to network | synchronic to network | synchronic to network |
| Metering capacitance | 99999,99 h | 99999,99 h | 99999,99 h |
| Run display | yes | yes | yes |
| Assembling mode | distributing bus bar | assembling with clamp cover | integration |
| Connection type | captive ± screw terminals 1 x 2,5 resp. 2 x 1,5 mm ² | receptacle with screw terminals | screw terminals |

Dimensional drawings /
circuit diagrams:



| | taxxo 612 | taxxo 712 |
|---------------------------|---|---|
| Dimensions H x W x D (mm) | 24 x 36 x 57 | 30 x 55 x 71 |
| Switchboard panel (mm) | 22 x 33 | 25 x 50 |
| Distributor cut-out (mm) | – | – |
| Mounting depth (mm) | 68 | 66 |
| Weight (g) approx. | 34 | 50 |
| Connection | see ordering data | see ordering data |
| Power consumption | approx. 1 VA | approx. 1 VA |
| Ambient temperature | -20°C ... +55°C | -20°C ... +55°C |
| Protection class | II | II |
| Protection type front | IP 20 (IP 54 with sealing s. accessories) | IP 20 (IP 54 with sealing s. accessories) |
| Accuracy | synchronic to network | synchronic to network |
| Metering capacitance | 99999,99 h | 99999,99 h |
| Run display | yes | yes |
| Assembling mode | integration | integration |
| Connection type | screw terminals | screw terminals |

Dimensional drawings /
circuit diagrams:

