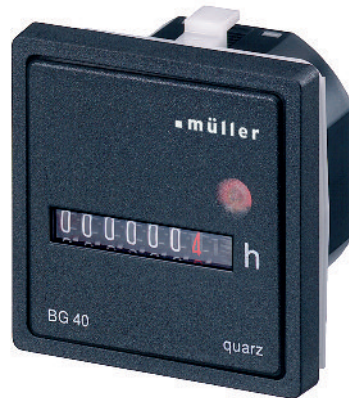




BW 40.18
Front panel 48 x 48 mm



BG 40.27
Front panel with trim 55 x 55 mm

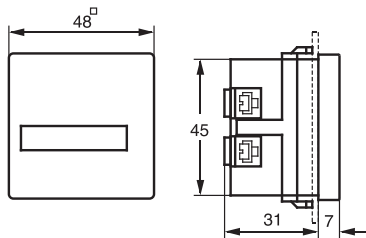


BG 40.37
Front panel with trim 72 x 72 mm

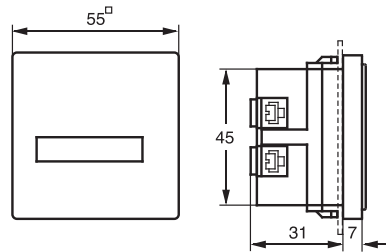
BW 40.18
BG 40.17

BW 40.28
BG 40.27

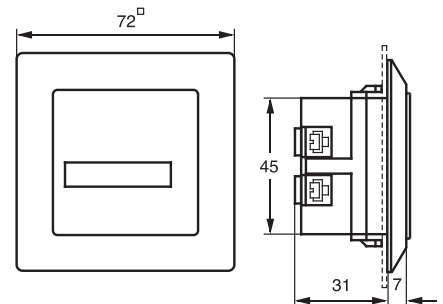
BW 40.38
BG 40.37



| Order number | Version |
|-------------------|---------------------|
| ▼ BW 40.18 | Alternating current |
| ▼ BG 40.17 | Direct current |
| ▼ Housing colour | |



| Order number | Version |
|-------------------|---------------------|
| ▼ BW 40.28 | Alternating current |
| ▼ BG 40.27 | Direct current |
| ▼ Housing colour | |



| Order number | Version |
|-------------------|---------------------|
| ▼ BW 40.38 | Alternating current |
| ▼ BG 40.37 | Direct current |
| ▼ Housing colour | |

Highlights

- With retaining clip
- With universal connections
- Touch proof connections to VBG4
- Low-noise
- BW: Alternating current
BG: Direct current quartz crystal

Elapsed time counters BW/BG 40
for panel mounting, Alternating/Direct Current

Special features

- Large format numerals 4.4 mm in height
- Quick-fix retaining clip
- Easy to connect – screw terminals accessible from rear
- Attachments for other cutouts
- Ring seal for IP 54 – also seals front panel cutout
- BG: quartz stabilized
- BG: large voltage ranges

| Technical data | |
|--|--|
| Supply voltages (please state when ordering) | BW: 230 V, 50 Hz (standard) 115 V, 50 Hz 24 V, 50 Hz BG: 12– 48 VDC (standard) 5– 24 VDC 36–120 VDC |
| Other voltages | on request |
| Optional frequency | BW: 60 Hz |
| Voltage tolerance | BW: ±15% · BG: ±10% |
| Power consumption (real power) | BW: 0.15 W · BG: approx. 20 mW at 12 VDC |
| Counter capacity | BW: 99999 h · BG: 999999 h |
| Accuracy of reading | BW: 0,01 h · BG: 0,1 h |
| Numeral height | 4.4 mm |
| Numeral colour | white, decimal figures red |
| Operation indicator | fast-running wheel |
| Permitted ambient temperature | BW: –15° ... +55°C · BG: –10° ... +50°C |
| Enclosure | self-extinguishing thermoplastic |
| Switchboard flush mounting | housing to DIN EN 43700 |
| Type of connection | Universal: Screw, soldered and 6.3 x 0.8 mm AMP plug-type connections |
| Type of protection | Front IP 50 to DIN EN 60529 (with ring seal 101.003.004: IP 54) |
| Class of protection | BW: II · BG: III (up to 48 VDC) when fitted in accordance with regulations |

Accessories

| | |
|--|---------|
| Retaining bracket for fixing to wall or distribution board | 692.006 |
| Terminal cover for retaining bracket | 003.007 |
| Trim 55 x 55 mm | 190.003 |
| Mask 72 x 72 mm | 190.004 |
| Mask Ø 72 (for flush mounting-Ø 60) | 190.008 |
| Mask Ø 72 (for flush mounting-Ø 50,5) | 190.009 |
| Ring seal for IP 54 | 101.003 |
| Ratchet clamp for BW 40.28 | 101.001 |

