



## Main

Range of product	Harmony K
Product or component type	Cam switch body
Component name	K2
[I <sub>th</sub> ] conventional free air thermal current	20 A
Sub-assembly composition	Contact blocks + fixing plate
Cam switch function	Stepping switch
Off position	Without Off position
Poles description	2P
Switching positions	Right: 0° - 45° - 90°
Product mounting	Front mounting
Fixing mode	Ø 22 mm hole
Bezel material	Plastic

## Complementary

Number of steps	3
Switching angle	45°
[U <sub>i</sub> ] rated insulation voltage	690 V degree of pollution 3 conforming to IEC 60947-1
[I <sub>the</sub> ] conventional enclosed thermal current	16 A
Rated operational power in W	1300 W AC-3/230 V 1 phase conforming to IEC 947-3 14000 W AC-21/400 V 3 phases conforming to IEC 947-3 17000 W AC-21/500 - 660 V 3 phases conforming to IEC 947-3 2200 W AC-3/230 V 3 phases conforming to IEC 947-3 2200 W AC-3/400 V 1 phase conforming to IEC 947-3 4000 W AC-23A/230 V 3 phases conforming to IEC 947-3 4000 W AC-3/400 V 3 phases conforming to IEC 947-3 4000 W AC-3/500 V 3 phases conforming to IEC 947-3 4000 W AC-3/690 V 3 phases conforming to IEC 947-3 5500 W AC-23A/400 V 3 phases conforming to IEC 947-3 5500 W AC-23A/500 V 3 phases conforming to IEC 947-3 5500 W AC-23A/690 V 3 phases conforming to IEC 947-3 8000 W AC-21/230 V 3 phases conforming to IEC 947-3
[I <sub>e</sub> ] rated operational current AC	2 A at 500 V AC-15 conforming to IEC 947-5-1 3 A at 400 V AC-15 conforming to IEC 947-5-1 4 A at 230 V AC-15 conforming to IEC 947-5-1 8 A at 400 V AC-3 3 phases conforming to IEC 947-3 10.8 A at 400 V AC-23A 3 phases conforming to IEC 947-3 14.6 A at 230 V AC-23A 3 phases conforming to IEC 947-3 4.7 A at 690 V AC-3 3 phases conforming to IEC 947-3 6.4 A at 690 V AC-23A 3 phases conforming to IEC 947-3 6.5 A at 500 V AC-3 3 phases conforming to IEC 947-3 8.3 A at 230 V AC-3 3 phases conforming to IEC 947-3 8.9 A at 500 V AC-23A 3 phases conforming to IEC 947-3
Electrical durability	200000 cycles AC-23 200000 cycles AC-3 600000 cycles AC-15 600000 cycles AC-21
Operating rate	2.5 cyc/mn AC-21 2.5 cyc/mn AC-23 2.5 cyc/mn AC-3 8.333 cyc/mn AC-15
Short-circuit current	10000 A
Short circuit protection	20 A by cartridge fuse, type gG
[U <sub>imp</sub> ] rated impulse withstand voltage	4 kV in isolating function 6 kV conforming to IEC 947-1

The information provided in this documentation contains general descriptions and/or technical characteristics of the performance of the products contained herein. This documentation is not intended as a substitute for and is not to be used for determining suitability or reliability of these products for specific user applications. It is the duty of any such user or integrator to perform the appropriate and complete risk analysis, evaluation and testing of the products with respect to the relevant specific application or use thereof. Neither Schneider Electric Industries SAS nor any of its affiliates or subsidiaries shall be responsible or liable for misuse of the information contained herein.

Contacts operation	Slow-break
Positive opening	With
Electrical connection	Captive screw clamp terminals flexible, 2 x 1.5 mm <sup>2</sup> Captive screw clamp terminals solid, 1 x 2.5 mm <sup>2</sup>
Mechanical durability	1000000 cycles
Product weight	0.14 kg

## Environment

Standards	CENELEC EN 50013 EN/IEC 60947-3 for power circuit EN/IEC 60947-5-1 for control circuit
Product certifications	CSA 240 V 1 hp 1 phase CSA 240 V 3 hp 3 phases 2 -pole(s) UL 240 V 1 hp 3 phases UL 240 V 0.33 hp 1 phase 2 -pole(s)
Protective treatment	TC
Ambient air temperature for operation	-25...55 °C
Ambient air temperature for storage	-40...70 °C
Shock resistance	30 gn conforming to IEC 68-2-27
Vibration resistance	5 gn, 10...150 Hz conforming to IEC 68-2-6
Class of protection against electric shock	Class II conforming to IEC 536 Class II conforming to NF C 20-030
RoHS EUR status	Compliant
RoHS EUR conformity date	0910

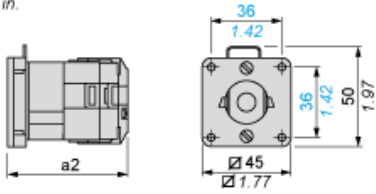
---

Body with Plastic Base

---

Front Mounting by  $\varnothing 22$  mm/0.87 in. Hole

mm  
in.

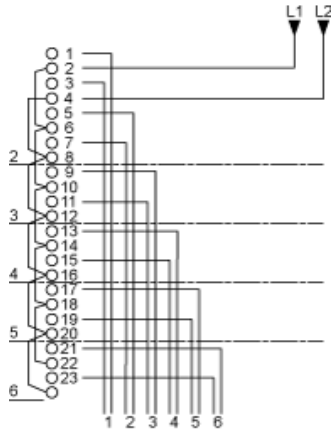


a2 69 mm/2.78 in.

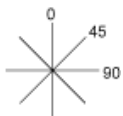
Link Positions (Factory Mounted)

Diagram for 2 to 6-step Stepping Switches

Select the number of steps according to the product characteristics.



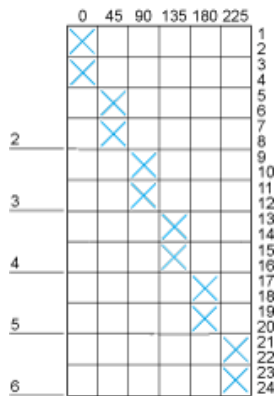
Angular Position of Switch



Switching Program


Diagram for 2 to 6-step Stepping Switches

Select the number of steps according to the product characteristics.



Convention Used for Switching Program Representation

- Contact closed
- Contact closed in 2 positions and maintained between the 2 positions
- Sealed assembly for auto-maintain control
- Overlapping contacts

 Spring return position: for a switching angle of  $90^\circ$ , spring return is over  $30^\circ$  after the last position (for a maximum of 3 simultaneous contacts).

Example:

