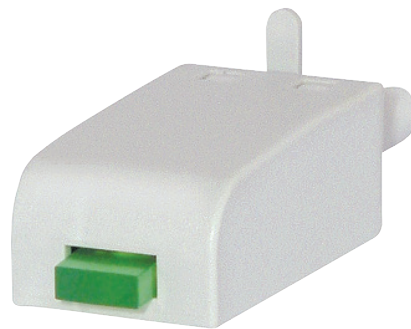


RS Part Number: **9143901**  
 Europa Part Number: **M21N-GREY**  
 Specifications and dimensions

- LED indication and EMC suppression modules
- Pluggable into sockets
- Retained in socket by the relay



Features	
Height	31mm
Width	11.5mm
Depth	9mm
Weight	0.015Kg
Contact arrangement	2 pin
Polarity	. - A2
Related products	
Socket	GZS....
Socket	GZT....
Socket	GZM....

ⓘ ALL PRODUCTS, PRODUCT SPECIFICATIONS AND DATA ARE SUBJECT TO CHANGE WITHOUT NOTICE.

Information provided in data sheets and/or specifications may vary from actual results in different applications and performance may vary over time. **All products must be installed according to manufacturers instructions.**

Europa House, Airport Way, Luton, Beds, LU2 9NH Tel: 01582 692 440 / Fax: 01582 692 450 e-mail: sales@europacomponents.com  
 website: <http://www.europacomponents.com>